

# RGI Series

## Electric rotary grippers

### Application field

test tube opening and closing, parts assembly, widely used in medical and laboratory automation, electronics, home appliances, packaging, auto parts and other industries

### Features

#### Gripping and infinite rotation

with the unique structural design, the RGI series is able to achieve the independent movement of gripping and infinite rotation, which is solving the non-standard design of the equipment and the winding problem of infinite rotation. It is stable and easy to use.

#### Adjustable parameters

The RGI series is able to adjust the gripping force, position, speed as well as the rotation parameters like torque, rotation and angle.

#### Integrated design

with 50\*50mm size, the RGI-14 is integrated with 2 sets of servo systems and the drive controller.

#### Easy deployment

The RGI series use the standardized communication and command interfaces which is easy to work with equipment.

#### Intelligent feedback

The RGI series is easy to monitor the gripping and rotation process with the intelligent feedback of gripping & rotation status and drop detection

# RGI-35-14

Electric rotary gripper

DH-ROBOTICS

Gripping force

10~35 N

Stroke

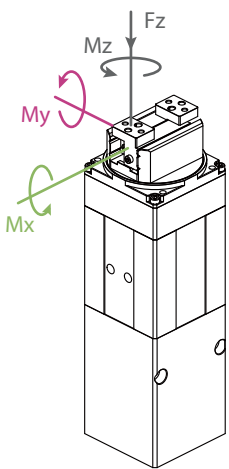
14 mm

Rotary torque

0.25 N·m

Rotary range

Infinite Rotating



Allowable vertical load (static)

Fz: 150 N

Allowable vertical load (static)

Mx: 2 N·m

My: 1.5 N·m

Mz: 2.5 N·m

## Mechanical specifications

Recommended workpiece weight*	0.7 kg
Max. rotation speed	1500 deg/s
Repeat accuracy(swiveling)	± 0.02 deg
Repeat accuracy(positioning)	± 0.02 mm
Opening/closing time	0.3 s/ 0.3 s
Weight	1.0 kg

## Electrical specifications

**Communication interface** Standard: Modbus RTU (RS485), Digital I/O  
Optional: TCP/IP, USB2.0, CAN2.0A, PROFINET, EtherCAT

Rated voltage 24 V DC ± 10%

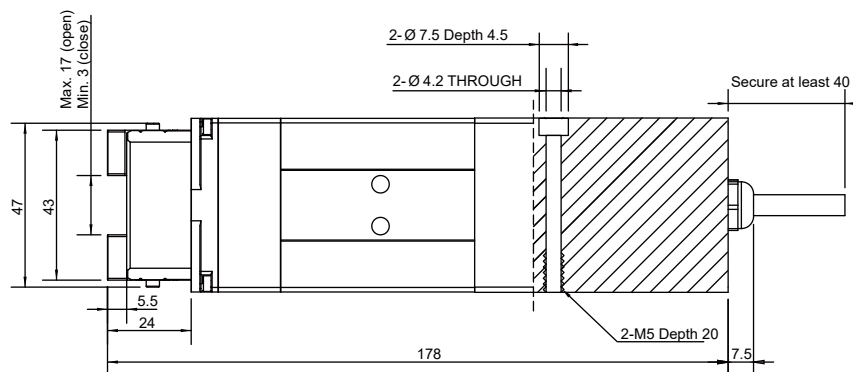
Rated current 1.1 A

Peak current 2 A

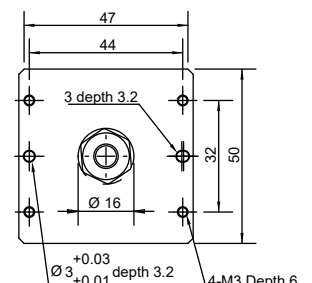
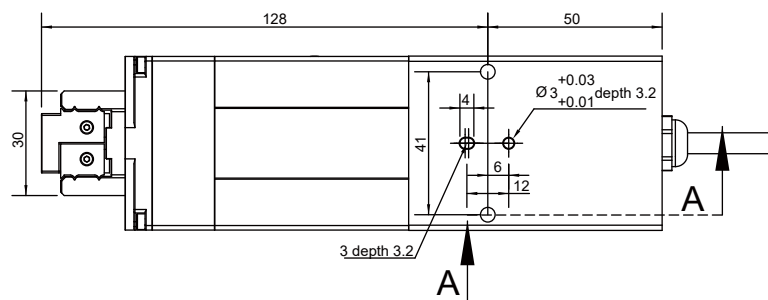
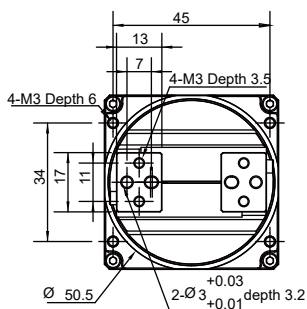
IP class IP 40

Recommended environment 0~40°C, under 85% RH

\*It depends on the shape of the grasping object, the material and friction of the contact surface, and the acceleration of the motion, if you have any questions, please contact us.



A-A Section



# RGI-35-30

Electric rotary gripper

DH-ROBOTICS

Gripping force

**10~35 N**

Stroke

**30 mm**

Rotary torque

**0.25 N·m**

Rotary range

**Infinite Rotating**

## Mechanical specifications

Recommended workpiece weight*	0.7 kg
Max. rotation speed	1500 deg/s
Repeat accuracy(swiveling)	± 0.02 deg
Repeat accuracy(positioning)	± 0.02 mm
Opening/closing time	0.3 s/ 0.3 s
Weight	1.2 kg

## Electrical specifications

**Communication interface** Standard: Modbus RTU (RS485), Digital I/O  
Optional: TCP/IP, USB2.0, CAN2.0A, PROFINET, EtherCAT

**Rated voltage** 24 V DC ± 10%

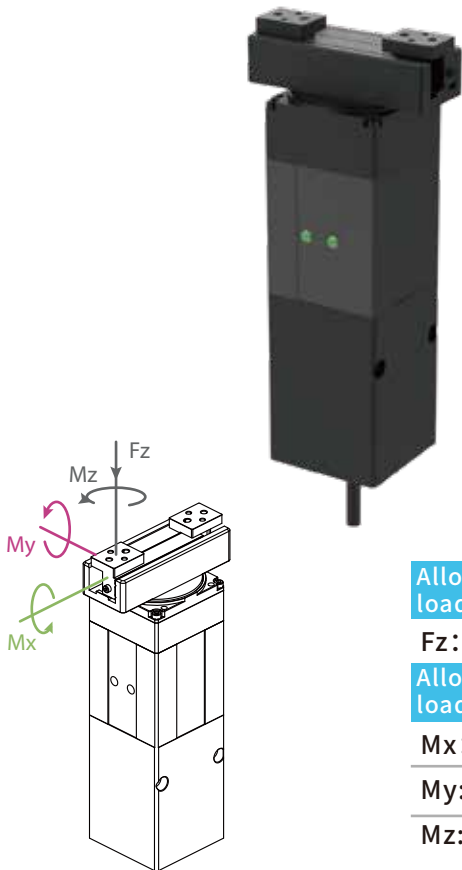
**Rated current** 1.1 A

**Peak current** 2 A

**IP class** IP 40

**Recommended environment** 0~40°C, under 85% RH

\*It depends on the shape of the grasping object, the material and friction of the contact surface, and the acceleration of the motion, if you have any questions, please contact us.



Allowable vertical load (static)

Fz: 150 N

Allowable vertical load (static)

Mx: 2 N·m

My: 1.5 N·m

Mz: 2.5 N·m

