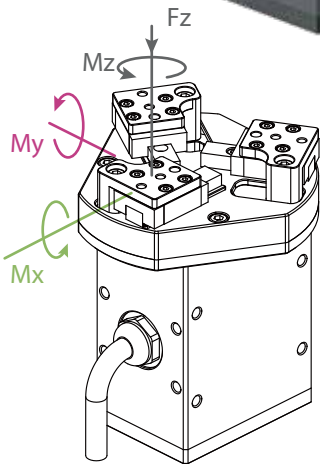


CGE-10-10

Electric centric gripper

DH-ROBOTICS



Allowable vertical load (static)

Fz: 150 N

Allowable vertical load (static)

Mx: 0.62 N·m

My: 0.62 N·m

Mz: 0.62 N·m

Gripping force

3~10 N

Stroke(per jaw)

10 mm

Mechanical specifications

Recommended workpiece weight* 0.1 kg

Repeat accuracy (positioning) ± 0.03 mm

Opening/closing time 0.3 s/0.3 s

Driving method Rack and pinion+ Linear guide

Weight 0.43 kg

Noise emission < 40 dB

Electrical specifications

Communication Standard: Modbus RTU (RS485), Digital I/O interface Optional: TCP/IP, USB2.0, CAN2.0A,PROFINET,EtherCAT

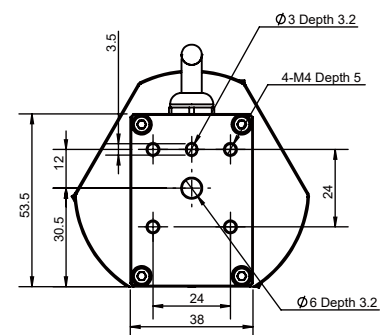
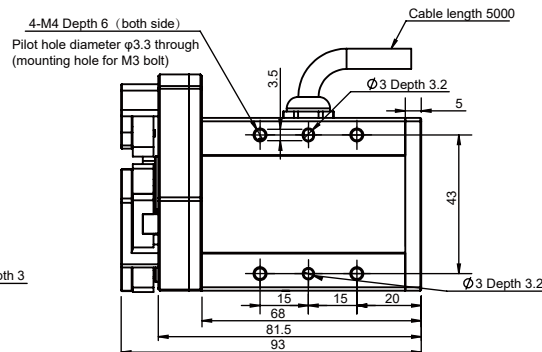
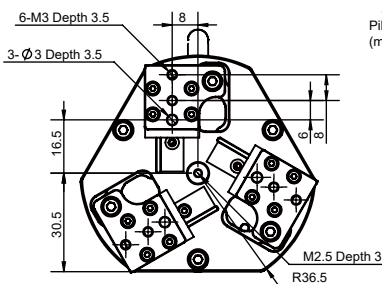
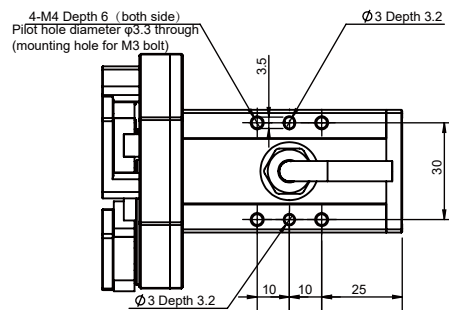
Rated voltage 24 V DC ± 10%

Rated current 0.3 A

Peak current 0.6 A

Recommended environment 0~40°C, under 85% RH

*It depends on the shape of the grasping object, the material and friction of the contact surface, and the acceleration of the motion,If you have any questions, please contact us.



CGI-100-170

Electric centric gripper

DH-ROBOTICS



■ Gripping force

■ Recommended gripping diameter

30~100 N \varnothing 40~ \varnothing 170 mm

■ Mechanical specifications

Recommended workpiece weight*	1.5 kg
Repeat accuracy (positioning)	± 0.03 mm
Opening/closing time	0.5 s/0.5 s
Driving method	Pinion
Weight	1.5 kg
Noise emission	< 50 dB

■ Electrical specifications

Communication interface Standard: Modbus RTU (RS485), Digital I/O
Optional: TCP/IP, USB2.0, CAN2.0A, PROFINET, EtherCAT

Rated voltage 24 V DC $\pm 10\%$

Rated current 0.4 A

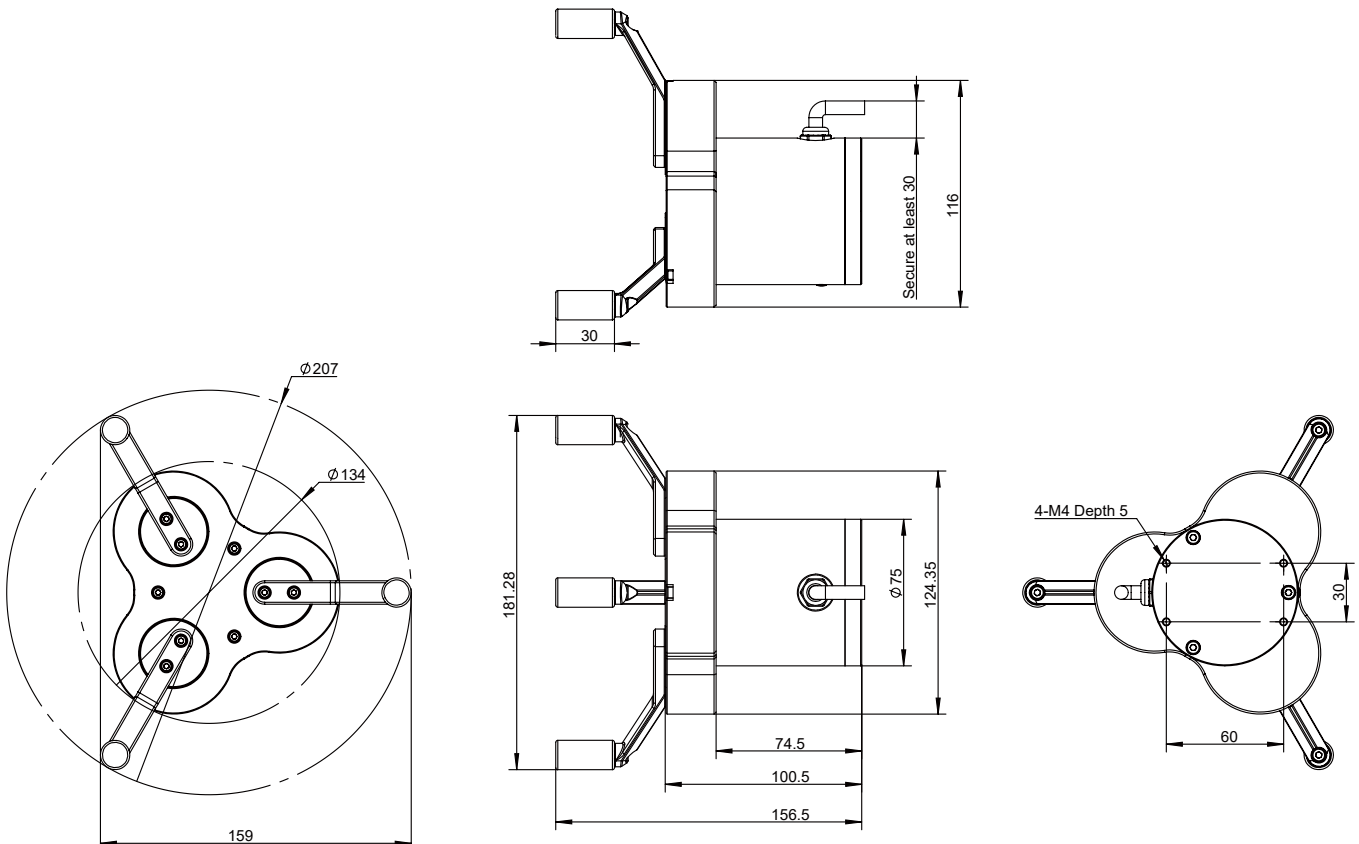
Peak current 1 A

IP class IP 40

Recommended environment 0~40°C, under 85% RH

*It depends on the shape of the grasping object, the material and friction of the contact surface, and the acceleration of the motion, if you have any questions, please contact us.

This type of gripper is recommended to use the standard finger. If you need to replace it in the application, please contact us for confirmation.



CGC-80-10

Collaborative centric gripper

DH-ROBOTICS



Gripping force

Stroke

20~80 N

10 mm

Mechanical specifications

Maximum recommended load*	1.5 kg
Repeat accuracy (positioning)	± 0.03 mm
Opening/closing time	0.2 s/0.2 s
Driving method	Rack and pinion + Linear guide
Weight	1.5 kg
Noise emission	< 50 dB

Electrical specifications

Communication interface Standard: Modbus RTU (RS485), Digital I/O
Optional: TCP/IP, USB2.0, CAN2.0A, PROFINET, EtherCAT

Rated voltage 24 V DC ± 10%

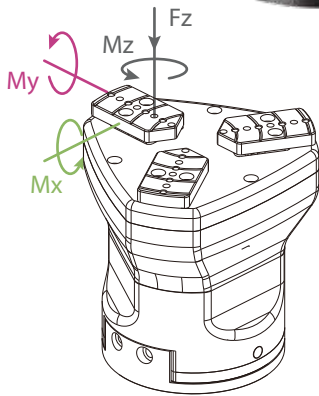
Rated current 0.3 A

Peak current 1 A

IP class IP 67

Recommended environment 0~40°C, under 85% RH

*It depends on the shape of the grasping object, the material and friction of the contact surface, and the acceleration of the motion, if you have any questions, please contact us.



Allowable vertical load (static)

Fz: 200 N

Allowable vertical load (static)

Mx: 2.5 N·m

My: 2 N·m

Mz: 3 N·m

