

xyz-mIoT w. EG91E by itbrainpower.net

low power IoT node w. LTE CAT1, 3G and 2G modem, European version

Built around **Microchip / ATMEL ATSAM21G** ARM0 microcontroller and having integrated Lithium battery (LiPO / LiION) charger, the **xyz-mIoT shield equipped with Quectel EG91E modem**, member of the **xyz-mIoT IoT node family**, supports endless devices / sensors / actuators interfacing via abundant 3.3V compliant interfaces (1 * I2C, 1 * SPI, 1 * UART, 13 * digital I/O - 1WIRE and PWM capable, 5 analog inputs and more) and providing support for solar powered applications and for *Lithium primer battery powered low power applications* (down to 35-37uA total shield sleep current and even further for particular configurations).

xyz-mIoT IoT node family is the worldwide first and most compact (35x45mm/~7g) IoT board in this class, class that combines the functionality of the low power Arm® Cortex®-M0 32-bit SAM21G microcontroller (in Arduino Zero / MKR compatible design) with THS + tVOC + HALL + IR + tilt / vibration sensors bundled and global low power LTE (CATM1 or NB-IoT) / LTE / 3G / GSM connectivity.

xyz-mIoT EG91E by itbrainpower.net shields are *Arduino programmable* and are supported by RTCC, WDT, low power and other Arduino libraries.

GETTING STARTED posts containing powering, low power / solar powering tips and tricks and interfacing guidelines for GSM / low power modems, ethernet, WIFI, LORA, SD card reader, TFT displays, sensors, relays and other modules, together with CLOUD integration examples can be found in <https://itbrainpower.net/projects> section.

xyz-mIoT EG91E by itbrainpower.net commercial versions:

- PN: XYZMIOT209#EG91E-UFL-0000000 SKU: ITBP-4012 - no embedded sensors

Equipped with Quectel EG91E

Radio protocols supported:
LTE CAT1, 3G and GSM

Coverage: **Europe, Middle East, Asia and Africa**

GNSS support: no

SIM support: 1 x (nano)SIM/USIM socket

xyz-mIoT IoT nodes are designed and manufactured in EU by R&D Software Solutions.

xyz-mIoT equipped with EG91E :: brief overview

Modem side - Quectel EG91E

Radio protocols: LTE CAT1 + 3G + 2G
Radio coverage: European, Middle East, Asia and Africa
Bands: FDD LTE - B1/B3/B7/B8/B20/B28A*, WCDMA - B1/B5/B8, GSM - B1/B8
Speeds: LTE-FDD – max. 10Mbps (DL)/max. 10Mbps (UL);
DC-HSDPA max. 42Mbps (DL)/ HSUPA max 5.76Mbps (UL);
WCDMA: max. 384Kbps (DL)/max 384Kbps (UL) ;
EDGE/GPRS - max. 296Kbps (DL), max. 236.8Kbps (UL) / max. 107Kbps (DL), max. 85.6Kbps (UL);

GNSS support: no

More specifications: https://itbrainpower.net/downloadables/Quectel_EG91_LTE_Specification_V1.2.pdf
AT commands: https://itbrainpower.net/downloadables/Quectel_EG9x_AT_Commands_Manual_V1.1.pdf

SIM support: 1 x NANO SIM/USIM socket.
External SIM: supported as default - 5 pin 1.27mm interface.
Embedded SIM: option (feature available for high volume batches and for selected partners only)

Modem power management – power isolation controlled by MCU
GSM radio hardware connector – u.FL
USB soldering pads for modem – yes

MCU side - ATMEL SAMD21G - Arm® Cortex®-M0 32-bit

Clock Speed: 32.768 kHz (RTCC) - crystal controlled, 48 MHz
Flash Memory / SRAM: 256 KB / 32KB
WDT: yes, having crystal time accuracy support

Interfacing Voltage: 3.3V
Digital I/O Pins: 13 + (analog, I2C, SPI, other) pins via alternate function + 2 reserved for shield power management DC current per I/O Pin: 7 mA
PWM pins: 12
UART (hardware): 1 + 1 reserved for modem communication
SPI(hardware) 1
I2C (hardware) 1
Analog Input Pins 5 (ADC 8/10/12 bit)
External Interrupts 8

More specifications: <https://itbrainpower.net/downloadables/40001882A.pdf>

Embedded SENSORS - by PN suffix coding (xxxxxxx)

PN: XYZMIOT209#EG91E-UFL-0000000 – no embedded sensors, uFL - SKU: ITBP-4012

Powering side and power management

low power design: yes – down to 35-40uA* (and bellow**) total shield sleep current support
direct powering (no battery): yes - 3.80-4.20 V supply (min. 500mA sustained and 2A pulse capable) connected to VBAT and GND pins;

Lithium primer battery support: yes, default - via VBAT and GND pins**;

xyz-mIoT equipped with EG91E :: brief overview (continuation)

Integrated battery charger: yes, having 6V solar cell support;

Battery charger input voltages: USB (5V) / Vraw (4.8-7V);

Supported rechargeable batteries:

single cell Lithium Polymer min. 250mAh,

single cell Lithium ION min. 250mAh,

super-capacitor >1F / >5V w. ESR less than 150mOhm

3.3V for MCU, sensors and external devices: via embedded LDO;

max. current on 3.3V PAD: 75mA minus the total current sink by output ports;

max. DC current per MCU I/O pin: 7 mA;

Additional modem power management: yes (modem power isolation controlled by MCU)

* measured at 25 C, RTCC and GPIO interrupt wake routines, crystal controlled WDT and RTCC, two UART and I2C (no embedded sensors)

*&** special Lithium primer battery only versions is capable of down to typical 5-7uA deep sleep current (contact us).

Mechanical info

Dimensions: 1.4"x1.8" (35.56 x 45.72mm)

Weight: ~7g

Mechanical drawing: https://itbrainpower.net/downloadables/xyz-mIoT_mechanical_drawing.png

xyz-mIoT equipped with EG91E :: INTERFACES, PADS / PORTS and CONNECTORS

PADS / PORTS

Right image: bottom PCB with component identification*.

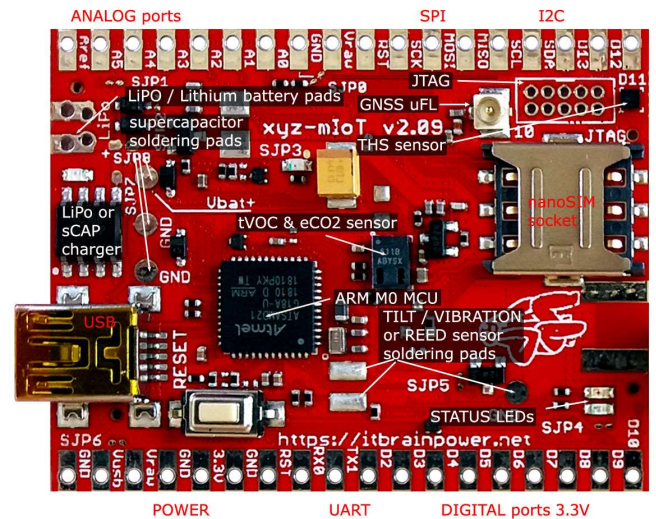
* GNSS and SENSORS are NOT available for this variant!

PADS & PORTS information and more:

https://itbrainpower.net/xyz-mIoT/xyz-mIoT_Arduino_ports_mapping

https://itbrainpower.net/downloadables/xyz-mIoT_2_09_block_schema_rev1.pdf

https://itbrainpower.net/downloadables/xyz-mIoT_2_09_block_schema_rev1.pdf



Hints:

- full resolution picture https://itbrainpower.net/images/xyz-mIoT-bottom-209_components_and_features_identification.jpg

- components / features are PN dependent https://itbrainpower.net/xyz-mIoT/xyz-mIoT_shields_features_and_capabilities

xyz-mIoT equipped with EG91E :: INTERFACES, PADS / PORTS and CONNECTORS (continuation)

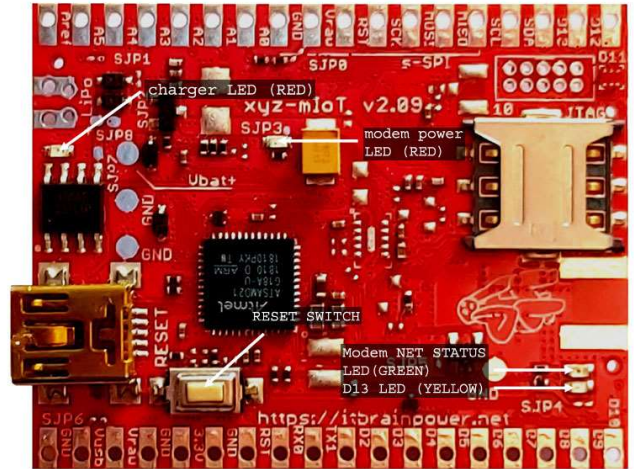
LEDs, RESET SWITCH and additional info

1. RESET SWITCH - RESET/PROGRAMMING functions*
2. GREEN LED - network status LED
3. YELLOW LED - D13 - ARDUINO system LED
4. RED LED (left) - battery charger LED
5. RED LED (center) - modem power LED

* enable programming mode - push RESET twice (fast)

* reset shield - push RESET button only once

- on right side - nano SIM socket connector
- on left side - LiPO battery PADS (LiPO+/Vbat and GND)
- on left side - USB mini B connector



Hints:

- full resolution picture https://itbrainpower.net/images/xyz-mIoT-EG91E_LEDs_RESET.jpg

External SIM CARD port, antenna connector

External SIM card interface*

1. SIM VDD
2. SIM DATA
3. SIM RESET
4. SIM GND
5. SIM CLOCK

* if not used, do not connect them

* if used, in order to avoid interferences, keep the wires as short as possible and take in to account the wires routing.

GSM side antenna connector

xyz-mIoT shield may be ordered with *u.FL* connector or equipped with *SMA-F* connector.



Hints:

- full resolution picture https://itbrainpower.net/images/xyz-mIoT-EG91E_LEDs_RESET.jpg
- uFL/SMA options, read https://itbrainpower.net/downloadables/xyz-mIoT_shields_features_and_capabilities.pdf

xyz-mIoT equipped with EG91E :: ARDUINO libraries, EXAMPLES and UTILITIES

xyz-mIoT shield Arduino board definition library, RTCC, WDT and low power Arduino support libraries, embedded sensors Arduino libraries and code examples for Arduino can be downloaded from <https://itbrainpower.net/downloads.php#xyz-mIoT> page.

Hint: Resources marked with "#", requires for download the following information: your name, email address and the modem IMEI. The modem IMEI can be found printed on the Quectel GSM module, or run AT+GMGS command.

xyz-mIoT equipped with EG91E :: DOCUMENTATION DOWNLOAD/ONLINE

The xyz-mIoT shield documentation can be downloaded from https://itbrainpower.net/downloads#xyz-mIoT_documentation page.

xyz-mIoT equipped with EG91E :: projects and how to

GETTING STARTED posts containing xyz-mIoT by itbrainpower.net powering, low power / solar cell powering tips and tricks and interfacing guidelines for GSM / low power modems, ethernet, WIFI, LORA, SD card reader, TFT displays, sensors, relays and other modules, together with CLOUD integration examples can be found at <https://itbrainpower.net/projects>.

xyz-mIoT equipped with EG91E :: part number / SKU

xyz-mIoT EG91E, uFL, no embedded sensors - PN: XYZMIOT209#EG91E-UFL-0000000 / SKU: ITBP-4012
xyz-mIoT EG91E, SMA, no embedded sensors - PN: XYZMIOT209#EG91E-SMA-0000000 / SKU: ITBP-4012S