



**P r o f e s s i o n a l t o u r g u i d e r o b o t**

---

Robots truly make life better

Connect: Elsa  
whatsapp+86-1861652997

# CONTENTS

**01** Professional tour  
guide robot Pipi

**03** Introduction to  
PiPi hardware  
features

**05** Introduction to Pipi  
application scenarios  
and cases

**02** Professional  
tour guide robot  
Pipi

**04** Introduction to  
Pipi software  
features



P r o f e s s i o n a l   t o u r   g u i d e  
r o b o t

P P B O T

The company is committed to creating "truly" highly interactive, high-tech, and highly intelligent tour guide robot products. The "PiPi" robot was born for tour guiding. It uses high-precision SLAM navigation and positioning algorithms to achieve optimized and convenient interactive operations. It can realize functions such as robot reception, leading explanations, and intelligent inquiries. In addition, it provides customized services from the appearance to the function of the robot, so that the robot and the theme of the exhibition hall are integrated.

Professional  
tour guide  
robot

口

Full chain  
Voice technology

耳

6-microphone array  
Speech-to-text

眼

Full perception  
Intelligent recognition

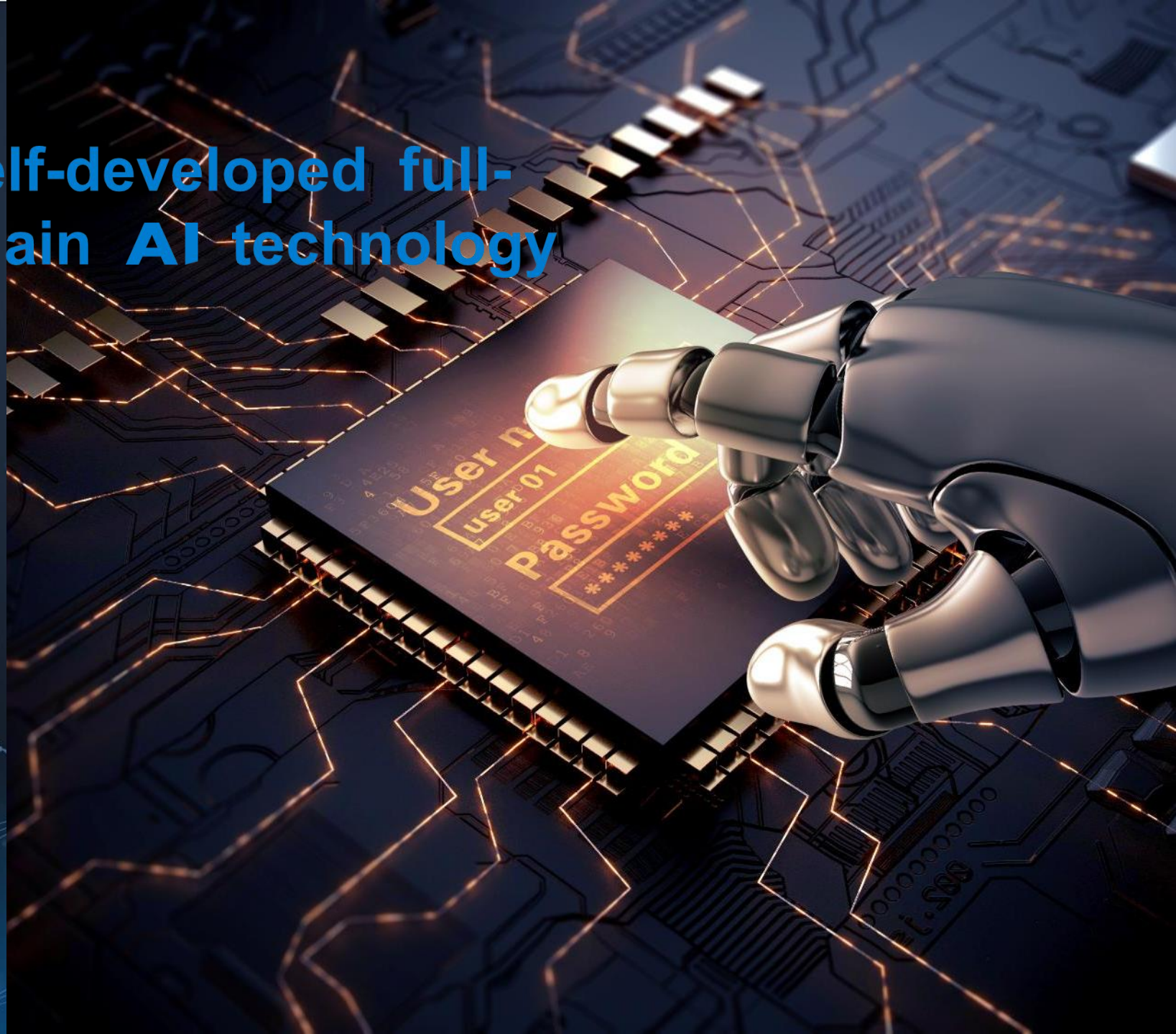
腿

Indoor autonomous  
navigation platform

脑

Equipped with super  
powerful chip system

Self-developed full-  
chain AI technology



## PARAMETERS

Size	480mm*480mm*1300mm
NW	60Kg
head screen	8inch, 1280*800px
body screen	21.5 inch, 1920*1080px
Content Import	Supports importing videos, pictures, voice and other content
Tour method	Fixed route tour, fixed point tour
Mobile Mode	Map navigation, autonomous path planning
Speech Recognition	6 microphone arrays, 360° sound source positioning, intelligent voice interaction
Image Recognition	5M camera, depth camera, face recognition, motion recognition
sensor	LiDAR, ultrasonic, anti-drop, collision sensor, etc.
Electricity usage	4-5 hours of charging, 12 hours of battery life, automatic recharge at low battery
charger sizes	350mm*140mm*280mm
network	WIFI 2.4/5G, supports SIM card access to mobile network
Movement Speed	Default speed 0.7m/s, maximum speed 1.2m/s
扬声器	支持,头部两侧出音





# Hardware Features

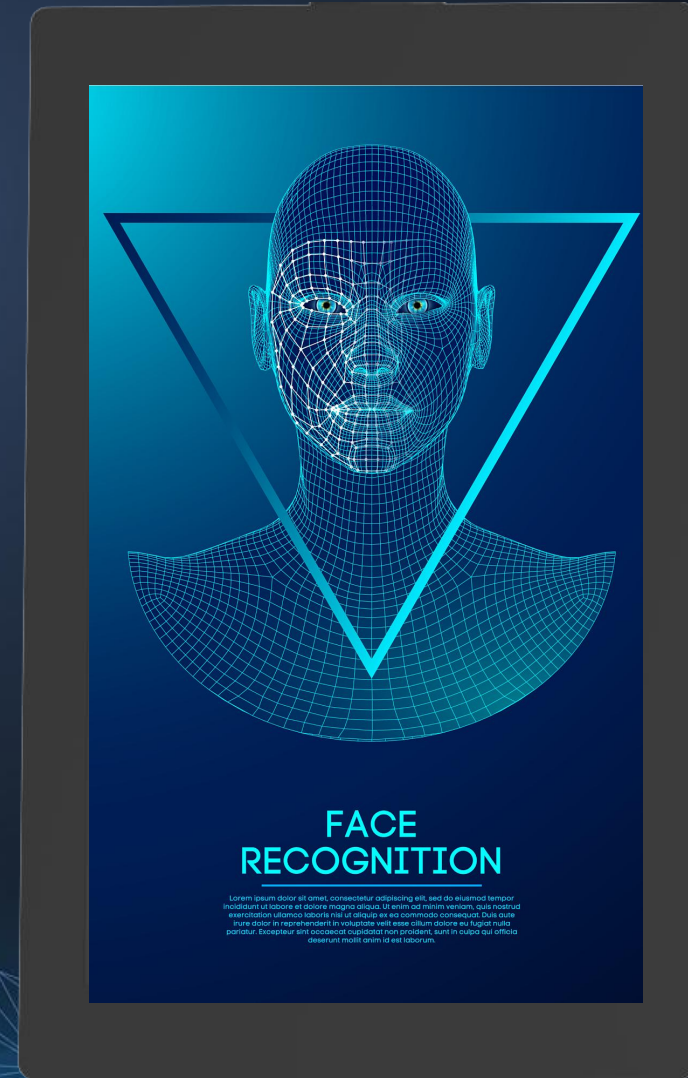
Robots truly make life better

# Hardware Features

Extra large  
screen



High-definition resolution and  
ultra-large size bring  
unprecedented shocking vision



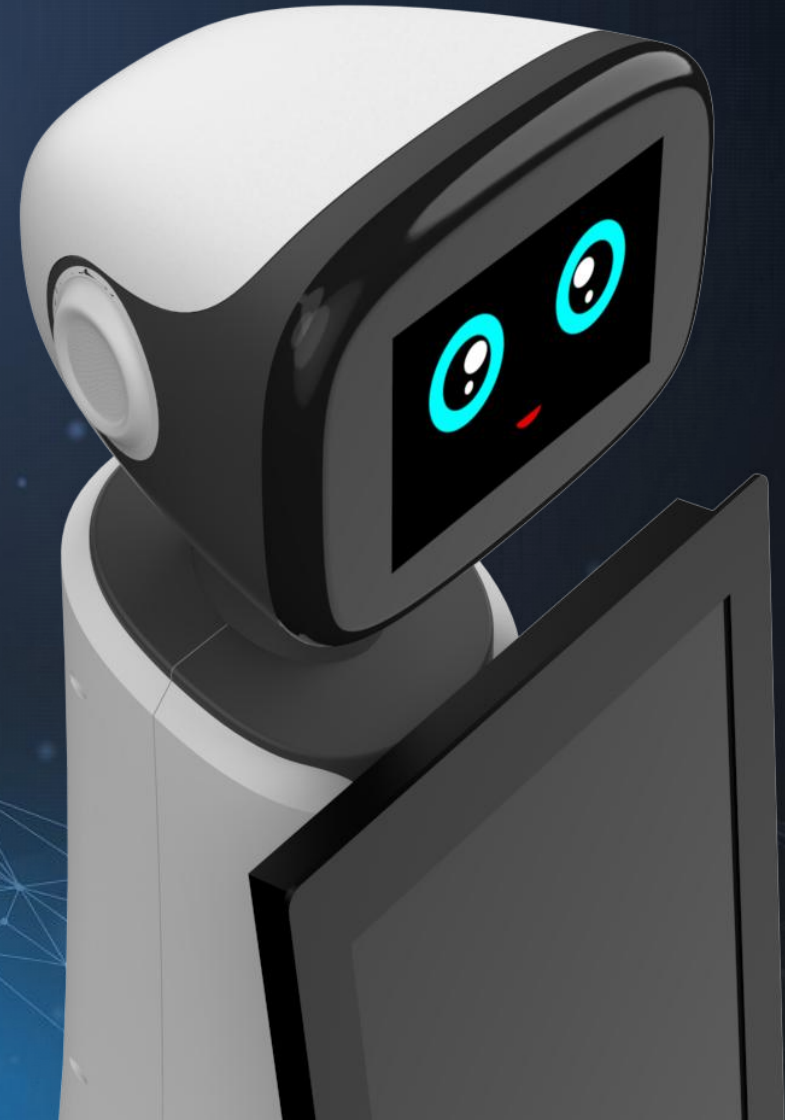
# Hardware Features

## Voice Interaction



The middle area at the top of the head is the voice interaction area

6-microphone array, easy to identify even in noisy environments





# Hardware Features

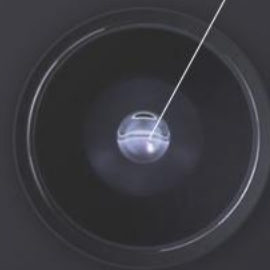
## HD camera

---



5M camera, depth camera

Super clear, full view of details



# Hardware Features



## speaker

---

The speakers on the left and right sides provide a loud and rich sound.

The wide sound field allows you to feel as if you are there.

# Hardware Features

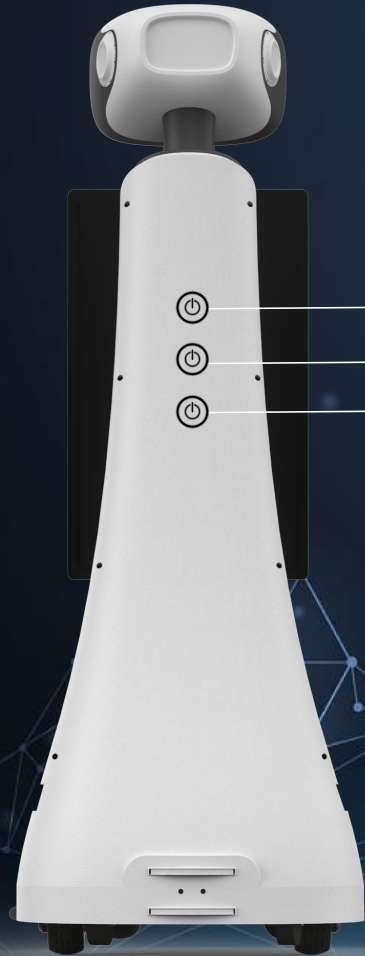
## Chassis

---

It is equipped with a chassis and a combination of laser radar and depth camera, and has intelligent navigation path planning and smart autonomous obstacle avoidance capabilities.



Professional  
tour guide  
robot



Emergency stop button

Power button

Brake release



The head adopts two-color stitching design

The radar opening is fully opened, and the robot can move in reverse

Manual charging port



# Software Features

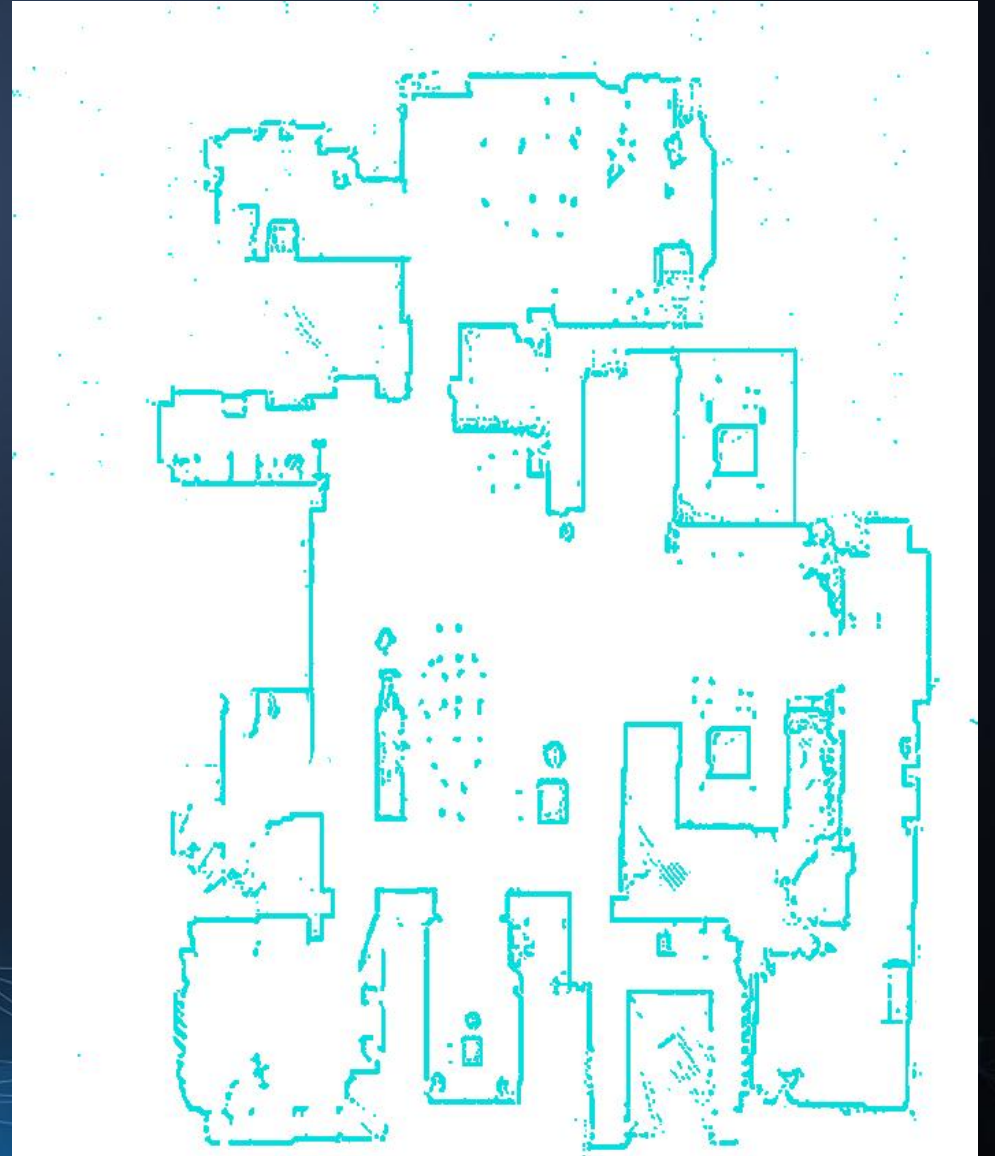
Robots truly make life better

# Software Features

## Robots lead the way Smart tour guide

---

- Scanning environment map Intelligent navigation path planning
- Adopt high-precision SLAM mapping navigation algorithm



# Software Features

## Autonomous obstacle avoidance Ensure safety

- Thanks to the various sensors such as depth camera, lidar, ultrasonic, collision and anti-fall, Pippi can perceive environmental information in real time to ensure safe operation.



# Software Features

HD camera



## Fully intelligent visual recognition

- Face recognition, body tracking, motion recognition

RGDB Depth Camera





# Hi, Pippi is here to show you around anytime!



Support customized voice interaction, all-round spatial sound source positioning,  
high-sensitivity recognition in noisy environments

Hello, my name is Pippi, and I look forward to seeing you!

Hi! Pippi has customized a tour route for you~

Do you need Pippi to accompany you on the tour?



Let's go to the next destination together!

I'm going to go on patrol first, call "Pipi" if you need me!

Pippi will go back to recharge first, and will be back with full energy soon~

Thank you for accompanying Pippi on the tour~

# Software Features

## Self-recharging cycle

- When the battery is low, the robot will automatically return to the charging station and recharge to work again.



# Tour guide robot • Guest reception function



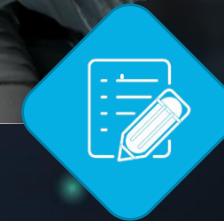
Visitors come and Pipi takes  
the initiative to greet them



Facial recognition to  
determine visitor  
identity



Photo collection  
Face registration

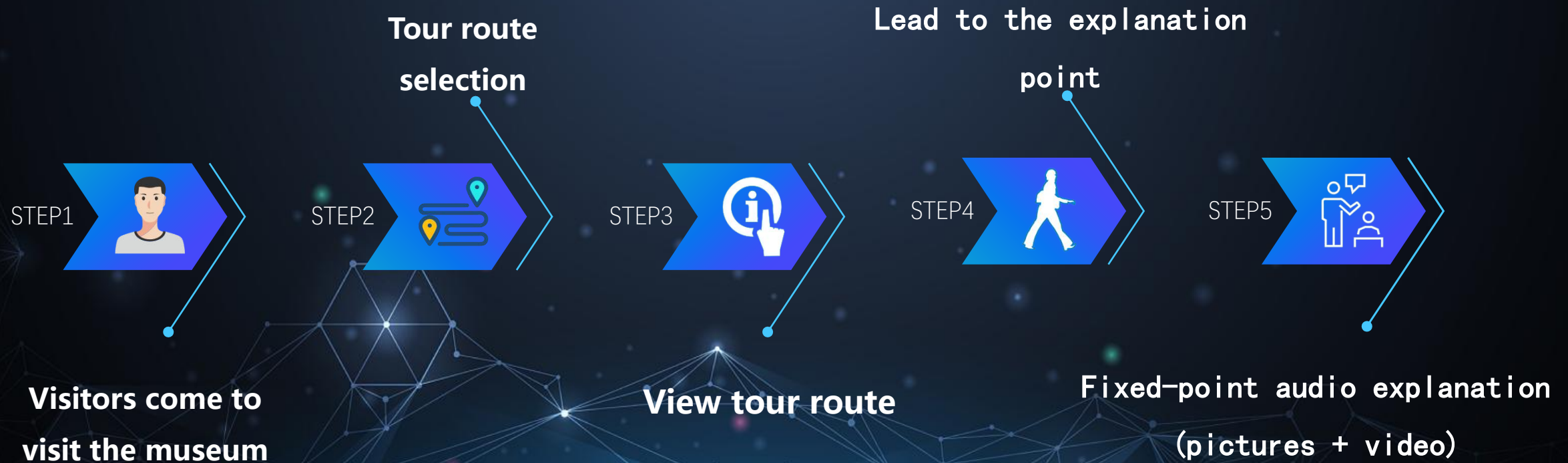


Successful registration  
Leading reception

# Tour guide robot

explanation function

- Leading



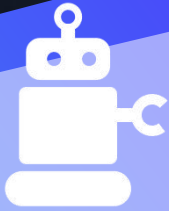
# Tour guide robot • Smart query function

The backend can flexibly configure Q&A, support multiple forms such as text, pictures, and videos, and take effect in real time, solving the needs of customers in different industries for exclusive Q&A consultation.



# Professional tour guide robot

## Robot Customized service



### Customized appearance

1. The robot appearance can be customized to match the theme of the exhibition hall
2. Customized appearance according to customer requirements
3. The customization fee is much lower than the industry average



### Customized functions

1. Customize functions for the robot according to customer requirements
2. For example, you can connect to the central control to remotely control the lights, screen, audio, etc.
3. You can customize the linkage between the robot and the interactive radar





**A p p l i c a t i o n  
s c e n a r i o s a n d c a s e  
i n t r o d u c t i o n**

Robots truly make life better

**A p p l i c a t i o n  
s c e n a r i o s a n d  
c a s e  
i n t r o d u c t i o n**



# Pipi industry application scenario solutions



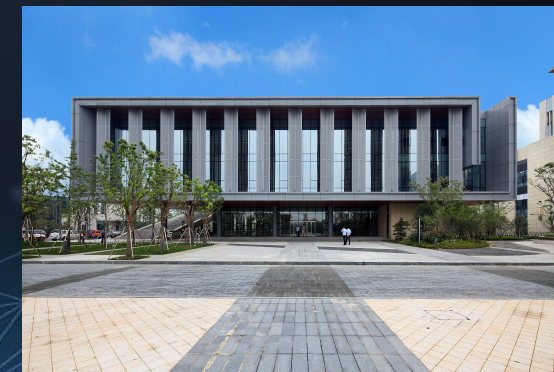
**Enterprise scenario**  
Reception | Tour Inquiry | Video Conference



**Exhibition Hall Scene**  
Welcoming reception | Guiding explanation | Intelligent inquiry



**Shopping mall scene**  
Reception | Mobile Promotion | Smart Inquiry



**Government Affairs**  
Reception | Guide | Smart Inquiry



# Application scenarios and case introduction

## Pipi

### 【Enterprise scenario solutions】

Visitor reception|Guided tour|Employee management|Permission management|Remote control|Home page configuration|Advertising|Customer management|Customized Q&A



Smart Front Desk



Smart Exhibition Hall



Smart Attendance



Smart Meeting



Smart Management



## Pipi 【Exhibition Hall Scene Solution】



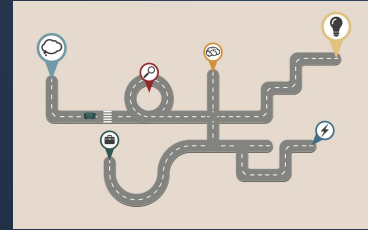
### Reception

Take the initiative to greet and ask questions  
Make every guest who comes to visit feel at home



### Route selection

Provide multiple route options according to the guests' visiting destination



### View Directions

Check the details of the tour route and accurately guide guests to their destination after selecting it



### Fixed-point explanation

It can be integrated into the tour route, and supports flexible configuration of multiple explanation routes in the background fixed-point broadcast, Q&A, TTS, pictures, videos and other forms



### Smart Inquiry

Provide intelligent inquiry services for the exhibition hall to solve visitors' doubts at any time and provide the most considerate service for this visit



# Pipi [Shopping mall store scene solution]

## In the mall

The robot patrols outside the store at regular intervals along a designated route and broadcasts advertising materials. It uses facial recognition to detect users and proactively greets them.

## In front of the store

Robots are placed at the store entrance to attract customers to scan codes and receive coupons, stimulating consumption in the store.

## In front of the store

Interact with customers, give out gifts and add fun.

## In-store

It can chat/take photos with customers in the store, and provide other intelligent consultation introductions and explanations.

## In front of the store

When the customer finishes shopping, the robot will see him off and welcome him to come again next time.



R o b o t s   t r u l y   m a k e   l i f e   b e t t e r

---