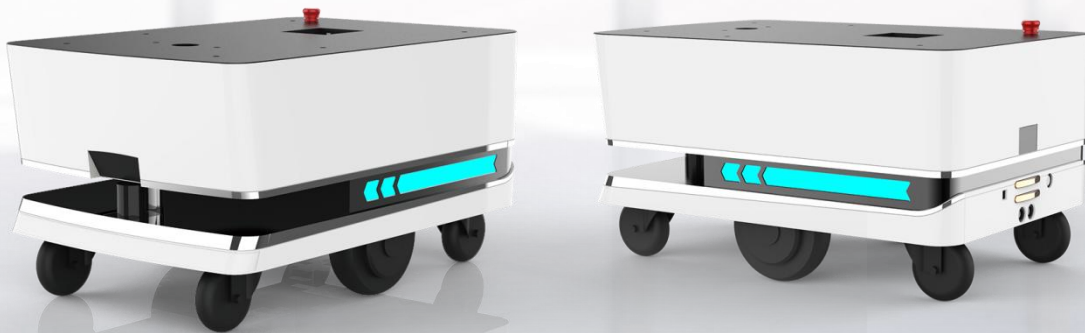


# ATEAGO MOBILE ROBOT CHASSIS (S4)

ATEAGO robot chassis S4 has multiple functions such as visual positioning, indoor navigation, and intelligent obstacle avoidance. It is mainly composed of core hardware such as lidar sensors, depth cameras, and modular positioning and navigation systems. Laser SLAM and V-SLAM multi-sensor fusion algorithms can be more flexible Planning the robot walking route.

DBOT12B



## OPEN SDK

Completely open software and hardware platform, providing application development and SDK access



## REMOTE NAVIGATION DEPLOYMENT

Reduce labor costs and improve work efficiency



## LARGE LOAD CAPACITY

100KG super load-bearing capacity to meet a variety of load requirements



## LARGE CAPACITY BATTERY

Lithium iron phosphate battery, long-lasting battery life

**ATEAGO ROBOT CHASSIS S4** It has multiple functions such as visual positioning, indoor navigation, and intelligent obstacle avoidance. It is mainly composed of core hardware such as lidar sensors, depth cameras, and modular positioning and navigation systems. Laser SLAM and V-SLAM multi-sensor fusion algorithm,It can plan the robot walking route more flexibly.

**LARGE CARRYING CAPACITY**

60 kg super large carrying, stable and not deformed

**MULTI-MODE INDOOR DRIVERLESS TECHNOLOGY**

Flexible combination of V-SLAM +laser SLAM

**INTELLIGENT OBSTACLE AVOIDANCE IN SECONDS**

Fast obstacle avoidance in 0.5 seconds, intelligent safety protection

**ORIGINAL REMOTE DEPLOYMENT CAPABILITY**

Remote automatic deployment, convenient and efficient

**AUTOMATIC RETURN TO CHARGING**

Battery is too low,automatically return to charging

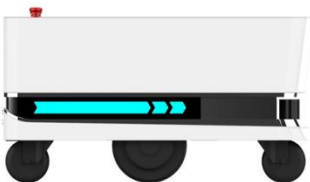
**TAKE THE ELEVATOR AUTONOMOUSLY (EXPANDABLE)** Can be linked with elevator control system to work across floors



Front view



top view



Left view

Product parameter

Overall size	704mm(L)*470mm(W)*397mm(H)
Total weight	50Kg
Universal wheel	3 inches
Navigation accuracy	±3cm
Battery life	16-20hours
Cruising speed	0.1m/s~1m/s
Load-bearing	100kg
Battery capacity	50AH 1930WH
Product material	Metal chassis + plastic shell
Lidar	Single-line lidar
Networking method	WIFI2.4G/5G
Construction area	About 40,000m²