



# ATEAGO TECHNOLOGY

BRING MORE SAFETY

Hangzhou ATEAGO Technology Co., Ltd  
Hangzhou Dige Technology Co., Ltd

Email: [sale1@ateago.com](mailto:sale1@ateago.com)

Web: [www.ateago.com](http://www.ateago.com)

Add: F3, Building NO.2, Dayuan Road NO.1188, Qingshan Lake Street, Linan District, Hangzhou, 311305, China

 CORE MANUFACTURER OF ANTI DRONE ACTIVE DEFENSE SYSTEM



► Detection Serie



Radar RG-LY-TPS5000



Spectrum Analyzer RG-LD-GRD6000CD-A



Blacklisting And Whitelisting RG-LY-GRR3/5/9



Photoelectric Detection System RG-LY-GAX2000

► Counterattack Serie



Shield Gen I RG-XD-TLN1000 (Explosion Proof)



Shield Gen I RG-XD-TLN1000P (Portable)



Shield Gen I RG-XD-TLN1000T (Rotation Version)



Directional Writing Frequency Jamming Device RG-LD-GRT3000DX

► Portable Serie



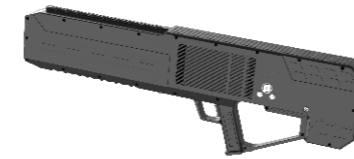
Portable Drone Detection And Positioning Equipment RG-LY-PRS5000P



Portable Drone Detection And Positioning Deception Equipment RG-LD-PRS1000D



Shield Gen I RG-XD-PLN3000P (Portable Version)



Countermeasure DroneGun RG-LD-PRT1500Q

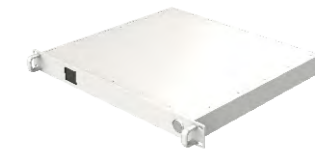


Portable Shield UAV Jammer RG-LD-PRT2000D

► All-in-one Serie



Shield Gen I RG-XD-TLN1000D (Explosion-proof, Detecting, Hitting All-in-one)

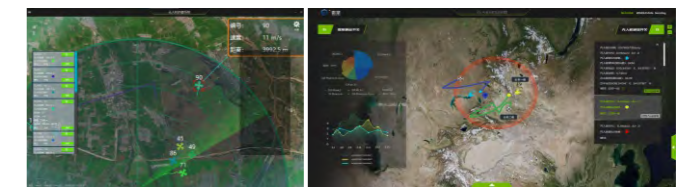


Time And Space Safety Isolation Device RG-TIME-GPS Transformer

► Vehicle Serie



Low Altitude Defense Vehicle System RG-LD-VSQ1000



## Detection Serie

### ➤ Radar RG-LY-TPS5000



The RG-LY-TPS5000 low-altitude detection radar uses deep learning technology to effectively solve the problem of "low, slow and small" target detection in complex environments. This method improves the signal-to-clutter ratio. The degree of dependence is low and the radar can detect low signal-to-clutter ratio in complex background environments. The effective detection of slow-moving small targets enables the radar to automatically detect various position environments adaptability. And it's a big breakthrough compared with the traditional MTI+MTD, CFAR and traditional hybrid radar Wave pattern detection method.

#### ➤ PRODUCT FEATURES



Accurate Detection



Stable Orbit



Low Fake-alarm Rate



Small Limitations

#### ➤ 产品参数 PRODUCT PARAMETERS

● Detection Range	≥5km (Fake-alarm:10-6,detection rate:95%)
● Min Detection Range	180m
● Angle Range	Azimuth Angle: 0-360° Pitch Angle: 0-30°
● Resolution	Azimuth ≤2.8°    Pitch ≤7.5°    Distance≤17m
● Accuracy	Azimuth ≤0.5° (3σ);    Pitch≤0.5° (3σ) Distance≤8m(3σ)
● Weight	Radar Frontend ≤34Kg;    Data Platform ≤15Kg
● Power	Radar Frontend ≤220W;    Data Platform ≤200W
● IP Rating	IP65
● Temperature Range	-40°C ~ +55°C
● Weight	Array ≤35kg,    Platform ≤15kg
● Size	Array ≤600mm*550mm (Turntable Included)

## Detection Serie

### ➤ Spectrum Analyzer RG-LD-GRD6000CD-A



The RG-LD-GRD6000CD-A uses wide-range radio frequency scanning feature recognition and decoding to discover, direction find, and track illegally intruding UAVs. It supports stand-alone work and network work, with high system integration and integrated design. It can work continuously at night, in dense fog and in other bad weather conditions.

#### ➤ PRODUCT FEATURES

Wide Broadband Detection

Unattended



Passive RF Detection



Low Fake-alarm Rate



Strong Adaptability



#### ➤ 产品参数 PRODUCT PARAMETERS

● Supported Frequency	300MHz~6000MHz
● Min Detection Height	0 meter
● Angle Accuracy	≤3°
● Airspace Detection	360° Vision
● Multi-object Tracking	Supported
● Detection Range	≥5km
● Input Power	AC 220V
● IP Rating	IP55
● Temperature Range	-40°C~+70°C
● Weight	≤20kg
● Size	566mmx500mm

## Detection Serie

### ➤ Blacklisting And Whitelisting RG-LY-GRR3/5/9 Radio Detection/Protocol Cracking

The RG-LY-GRR3/5/9 is based on advanced cognitive radio technology and uses passive detection to detect and accurately identify drones at long distances ("black and white list"); it can provide a detection range of 3km , 5km and 9km.



#### ➤ PRODUCT FEATURES



#### ➤ 产品参数 PRODUCT PARAMETERS

● Supported Band	ISM 2.4G/5.8G
● Effective Distance	≥3km
● Detection Sensitivity	95dBm(25kHz)
● Reconnaissance Airspace	360° Full Airspace
● Black/White Listing	Supported
● Power	30W
● IP Rating	IP65
● Temperature Range	-20° C~+65° C
● Weight	10kg
● Size	320mm X 240mm X 150mm

## Detection Serie

### ➤ Photoelectric Detection System RG-LY-GAX2000

The RG-LY-GAX2000 photoelectric detection system can discover drones, confirm their purpose, track and collect evidence. It can be used alone or linked with the radar system countermeasure system to quickly find targets.



#### ➤ PRODUCT FEATURES



#### ➤ 产品参数 PRODUCT PARAMETERS

● Detection Range	3km For Visible Light, 2km For Infrared
● Horizontal Rotation Range	360° Continuous Rotation
● Pitch Angle	-90° ~+90°
● Resolution	Visible Light: 1920*1080 Fixed Focus Visible Light Camera: 1920*1080 Thermal Imaging:640*512
● Intelligent Detection	It has automatic detection and countermeasures, which can lock on the target and link the gimbal to automatically track the target through thermal imaging or visible light.
● Voltage	AC220V/DC48V
● Power	300w
● IP Rating	IP67
● Temperature Range	-45°C ~ +70°C
● Weight	80kg
● Size	600mm*600 mm*750 mm
● Laser Rangefinder	Range : ≥2.5km    Accuracy ± 5m    Accuracy Rate ≥95%

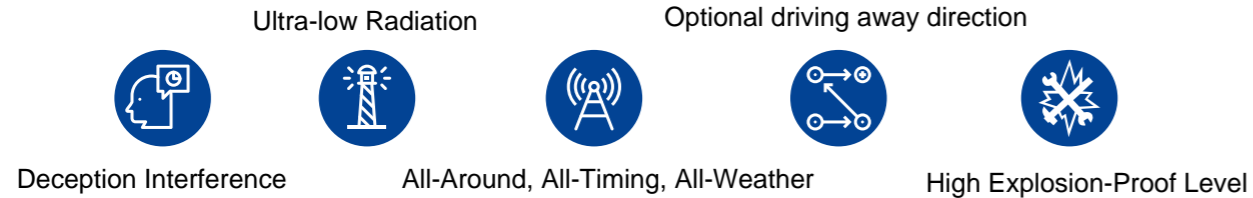
## Counterattack Serie

### Shield Gen I RG-XD-TLN1000 (Explosion Proof)



The RG-XD-TLN1000 (explosion proof) regenerates a satellite navigation deception signal with no less than two frequencies in real time, which can deceive and interfere the drone navigation coordinates under satellite navigating system, to achieve directional driving away and regional rejection.

#### PRODUCT FEATURES



#### 产品参数 PRODUCT PARAMETERS

Supported Band	GPS L1/GLONASS L1
Signal Transmission Power	≤10dBm
Working Range	≥500m
Autonomous Working Capability	24/7
Supported Strategy	Directional Driving Away, Regional Rejection
Signal Effective Time	<3s
Signal Invasion Time	<10s
Power Consumption	≤30w
IP Rating	IP66
Explosion Proof Classification	Ex d IIC T6 Gb
Temperature Range	-40° C~+70° C
Weight	<16kg
Size	370mm × 300mm × 192mm

## Counterattack Serie

### Shield Gen I RG-XD-TLN1000P (Portable)



The RG-XD-TLN1000P (portable) regenerates a satellite navigation deception signal with no less than two frequencies in real time, which can deceive and interfere the drone navigation coordinates under satellite navigating system, to achieve directional driving away (8 directions) and regional rejection.

#### PRODUCT FEATURES



#### 产品参数 PRODUCT PARAMETERS

Supported Band	GPS L1/GLONASS L1
Signal Transmission Power	≤10dBm
Working Range	≥500m
Autonomous Working Capability	24/7
Supported Strategy	Directional Driving Away, Regional Rejection
Signal Effective Time	<3s
Signal Invasion Time	<10s
Power Consumption	≤30w
Battery Life	≥5小时
IP Rating	IP65
Temperature Range	-40° C ~ +70° C (Customized Power Source)
Weight	<10kg
Size	180mm X 180mm X 140mm (Handle Excluded)

## Counterattack Serie

### Shield Gen I RG-XD-TLN1000T (Rotation Version)



The RG-XD-TLN1000T (rotation version) regenerates a satellite navigation deception signal with no less than two frequencies in real time, which can deceive and interfere the drone navigation coordinates under satellite navigating system, to achieve no-fly zone projection, directional driving away (8 directions) and regional rejection.

#### PRODUCT FEATURES



#### 产品参数 PRODUCT PARAMETERS

Supported Band	GPS L1/GLONASS L1/北斗B1
Signal Transmission Power	<5W (Customizable)
Working Range	5km
Autonomous Working Capability	24/7
Supported Strategy	Directional Driving Away, Regional Rejection
Signal Effective Time	<3s
Signal Invasion Time	<10s
Power Consumption	<75w
Temperature Range	-40° C~+70° C
Weight	<30kg
Rotation Angle	Horizontal 0-360°continuous rotation, Pitch -10-90°

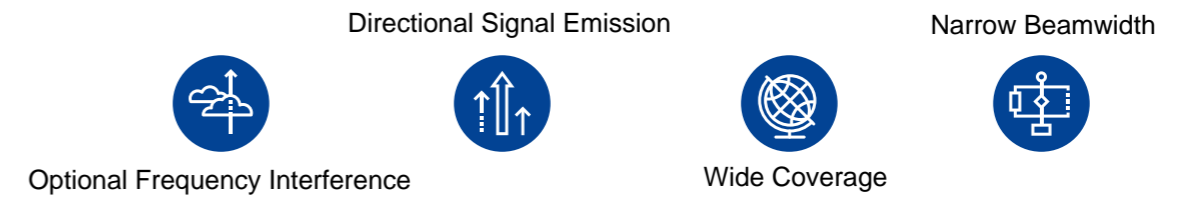
## Counterattack Serie

### Directional Writing Frequency Jamming Device RG-LD-GRT3000DX



The RG-LD-GRT3000DX can be configured with any frequency band within 300MH--6GHz band. All drones within the coverage area cannot obtain satellite positioning information. At the same time, the control signals and image transmission signals between the drone and the ground controller are all are cut off, which makes the drone to make an emergency landing or return.

#### PRODUCT FEATURES



#### 产品参数 PRODUCT PARAMETERS

Frequency Range	300MHz~6000MHz
Signal Transmission Power	≥50W
Voltage Adaptability	Single-phase  220V ± 10%/ ( 50Hz ± 5% )
Interfere Range	≥3km (Targeting DJI Phantom 4 Pro V2.0) (Interference To Signal Ratio 10:1)
Inference Reacting Time	≤10s
Directional Interference Rotation	Gimbal Azimuth: 0-360°, Gimbal Pitch: 0-360° Rotation Time ≤18s Accuracy ≤0.2°
Communication Interface	Ethernet 100BASE-T
Power Consumption	≤1800W
IP Rating	IP65
Temperature Range	-40°C ~ +55°C
Weight	≤75KG

## Portable Serie

### Portable Drone Detection And Positioning Equipment RG-LY-PRS5000P

The RG-LY-PRS5000P is a portable long-distance detection and positioning device that integrates UAV detection and positioning, UAV flight path display, UAV pilot detection and positioning, black and white list and other functions. Through in-depth analysis of drone signals, the device can accurately detect the SN code, model, location, trajectory, time, distance and other relevant information of all drones within the warning range, as well as information of the drone pilot.



#### PRODUCT FEATURES



Accurate Detection



Drone Tracking



Drone Pilot Positioning

#### 产品参数 PRODUCT PARAMETERS

● Recognizable Drones	DJI,AUTEL,FIMI,DAHUA,PowerVision,YUNEEC,etc.
● Locatable drones	DJI Mavic,Air,Mini,FPV,Avata Series
● Battery Life	Internal Battery ≤4h
● Size	510mm*425mm*240mm ( L*W*H )
● Working Range	≤5km
● Detection Feedback	The prompt sound and screen flashes indicate a drone is detected.
● Detection Frequency	ISM 2.4G ( 2377-2562 ) ; ISM 5.8G ( 5717-5852MHZ ) 900-950MHZ; GNSS L1 1.5G (1537-1625MHZ)
● Temperature Range	-20~65℃
● Weight	≤20Kg (Battery, Antenn And Charger Included)
● Power Supply	Internal Lithium Battery
● IP Rating	IP65

## Portable Serie

### Portable Drone Detection And Positioning Deception Equipment RG-LD-PRS1000D

The RG-LD-PRS1000D is a set of long-distance surveillance equipment that integrates UAV detection and positioning, UAV flight path display, UAV pilot detection and positioning, black and white lists, navigation deception and other functions. Through in-depth analysis of UAV signals, this device can accurately detect relevant information about all UAVs and corresponding UAV pilots within the warning range. At the same time, it can generate decoy signals to effectively drive away UAVs.



#### PRODUCT FEATURES



Accurate Detection



Fast Response



Less Restrictive



Directional Driving Away

#### 产品参数 PRODUCT PARAMETERS

● Recognizable Drones	DJI,AUTEL,FIMI,DAHUA,PowerVision,YUNEEC,etc.
● Detection Frequency	2.4G、5.8G
● Simultaneous Detection Number	≥10:Pcs Per Detection
● Detection Positioning Distance	1~5km
● Detection Success Rate	≥95%
● Weight	≤20kg
● Size	( 520mm*415mm*224mm ) ± 2mm
● Temperature Range	-20~65℃
● Battery Life	≥4h
● Screen Size	10.1 in
● IP Rating	IP65 (for closed case)

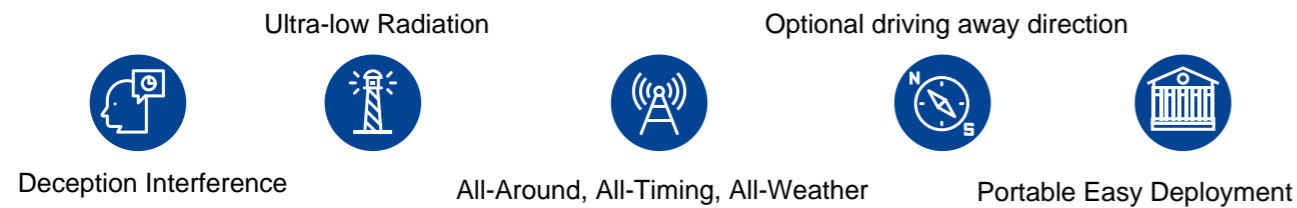
## Portable Serie

### Shield Gen I RG-XD-PLN3000P (Portable Version)

The RG-XD-PLN3000P (Portable Version) regenerates a satellite navigation deception signal with no less than two frequencies in real time, which can deceive and interfere the drone navigation coordinates under satellite navigating system, to achieve directional driving away (8 directions) and regional rejection.



#### PRODUCT FEATURES



#### 产品参数 PRODUCT PARAMETERS

Supported Band	GPS L1/GLONASS L1
Signal Transmission Power	<1W
Working Range	>2000m
Autonomous Working Capability	24/7
Supported Strategy	No-fly Zone Projection, Directional Driving Away
Signal Effective Time	<3s
Signal Intrusion Time	<10s
Power Consumption	≤40w
IP Rating	IP66
Temperature Range	-40° C~+70° C

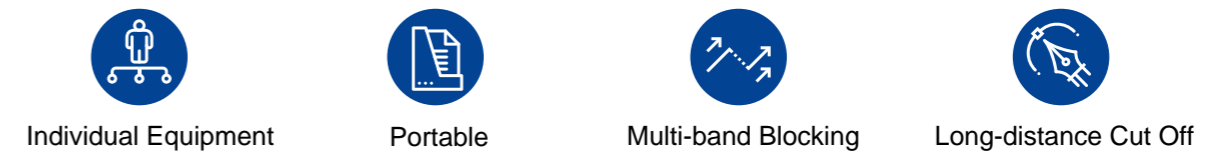
## Portable Serie

### Countermeasure DroneGun RG-LD-PRT1500Q

The RG-LD-PRT1500Q UAV interception system is a long-distance UAV interception equipment independently developed by us. This system can cut off the GPS/satellite positioning signals and image transmission signals of UAV. It can make the UAV automatically land or forced-return. This system has long-distance interception, easy operation, light weight, and easy portability, which makes it suitable for prisons, detention centers, drug rehabilitation centers, examination rooms, and other security Scenarios.



#### PRODUCT FEATURES



#### 产品参数 PRODUCT PARAMETERS

Interception Distance	Effective Range In Radius ≥ 1500m
Battery Life	Continuous Working Time With Internal Battery ≥ 90min
Working Mode	It has forced landing and returning functions, which are switchable freely.
Interference Method	Directional Interfere
Interception Band	GNSS L1/ISM 2.4G/ISM 5.8G/900M (optional)
Host Output	≥ 65w
Antenna	Integrated Non-exposed Antenna In Gun Body
Power Consumption	200w
IP Rating	IP55
Temperature Range	-10°C ~ +55°C
Weight	≤ 4Kg
Size	854.5mm x 283mm x 76mm



## Portable Serie

### ▶ Portable Shield UAV Jammer RG-LD-PRT2000D



The RG-LD-PRT2000D uses eight-band signal output (400MHz, 800MHz, 900MHz, 1.2GHz, 1.4GHz, 1.6GHz, 2.4GHz, 5.8GHz) for drone signal blocking. It can cut off the communication and navigation between the drone and the controller from a long distance away, so that the drone can be driven away or forced to land.

#### ▶ PRODUCT FEATURES



Individual Equipment



Portable



Multi-band Blocking



Long-distance Cut Off

#### ▶ 产品参数 PRODUCT PARAMETERS

Working Range	Effective Range In Radius $\geq 2000m$
Battery Life	3 bands(1.5G,2.4G,5.8G) Continuous Working Time $\geq 60min$
Interfere Direction	Directional Interfere
Interception Band	400MHz/800MHz/900MHz/1.2GHz/1.4GHz/1.5GHz/2.4GHz/5.8GHz
Indicators	LED Indicators Show Status,Battery And Error
Interception Channel	$\geq 8$
Input	DC29.4V/3A
Power Consumption	600w
IP Rating	IP65
Temperature Range	$-25^{\circ}C \sim +55^{\circ}C$
Weight	$\leq 7Kg$
Size	290mm*290mm*174mm

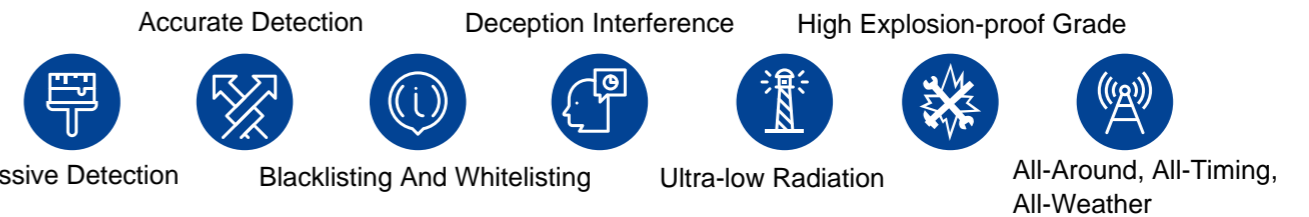
## All-in-one Serie

### ▶ Shield Gen I RG-XD-TLN1000D (Explosion-proof, Detecting, Hitting All-in-one)



The RG-XD-TLN1000D (Explosion-proof, Detecting, Hitting All-in-one) is based on advanced cognitive radio technology and uses passive detection to detect and identify drones from long-distances away (black and white list) accurately. It uses deception navigation technology to deceive and interfere the drone navigation coordinates under satellite navigating system, to fight against the "black flying" drones.

#### ▶ PRODUCT FEATURES



#### ▶ 产品参数 PRODUCT PARAMETERS

Supported Band	Detection: 2.4G/5.8G; Counterattack: GPS L1/GLONASS L1
Signal Transmission Power	$\leq 10dBm$
Working Range	Detection: 1500m; Counterattack: $\geq 500m$
Signal Effective Time	$< 3s$
Signal Intrusion Time	$< 10s$
Working Airspace	360° Whole Airspace
IP Rating	IP66
Explosion Proof Classification	Ex d IIC T6 Gb
Temperature Range	$-40^{\circ}C \sim +70^{\circ}C$
Power Consumption	$< 70w$
Weight	$< 20kg$
Size	370mm x 300mm x 192mm

## Other

### Time And Space Safety Isolation Device RG-TIME-GPS Transformer

The space-time safety isolation device RG-TIME-GPS transformer equipment is compatible with the existing timing equipment of the power system. It is installed between the timing equipment and the navigation satellite receiving antenna. It monitors the health status of the satellite signal in real time, identifies and isolates interference and attack signals, to ensure the timing signal stable and reliable all the time.



#### PRODUCT FEATURES



High Level Of Security



Expandable Input Frequency Band



Easy Installation

#### 产品参数 PRODUCT PARAMETERS

Working Band	Input: BDS、GPS Output: GPS L1、BDS B1
Timing Accuracy	≤100ns
Alarm Time	≤12s
Maintaining Ability	≥60min (Synchronization Accuracy Within 500ns)
Alarm Clearing Time	≤180s
Signal Power	-90dBm ~ -125dBm
Working Temperature	-5℃ ~ +45℃ (Host Kept Indoor)
Working Humidity	5%RH 至 95%RH
Power Supply	AC 110V/220V
Power Consumption	≤50W
Size	483mm × 430mm × 45mm

## Vehicle series

### Low Altitude Defense Vehicle System RG-LD-VSQ1000

The low-altitude defense vehicle-mounted system is targeted at low-slow intrusion small drones and is used in large-scale activities, important events, emergencies, border patrols and other security activities that have high requirements for equipment portability. The vehicle-mounted emergency defense command vehicle mainly includes the following parts:

#### Passive Detection System

The top of the modified vehicle is pre-installed with a variety of detection systems for low, slow and small targets. It can detect moving targets. It has full-band detection, identification of friendly and enemy targets (black and white list) and other capabilities;

#### Radar Detection System

Low-altitude detection radar targets low, slow and small targets for rapid discovery, precise positioning, and stable tracking of targets. It can be used in troops, airports, public security, nuclear power plants, prisons, oil depots, large gatherings and other important places;

#### Photoelectric Tracking System

The photoelectric tracking system integrated in the same module as the radar detection system which can follow the detector to maintain target tracking in high-speed motion. Through complex mathematical modeling methods, it ensures the accurate tracking of the UAV's flight;

#### Navigation Deception System

By regenerating a satellite navigation deception signal with no less than two frequencies in real time, which can deceive and interfere the drone navigation coordinates under satellite navigating system. It has the ability to interfere with "black flying" drones such as directional driving away, and precise trapping;

#### Radio Interception System

The radio interception system can generate multi-band high-power radio interference signals to implement electronic interference to "black flying" drones. It has the ability to block the uplink and downlink signal transmission of "black flying" drones, to make an emergency landing or return home.

#### PRODUCT FEATURES



Mobile Deployment



Equipment Can Be Added Or Removed Freely



# Software

## Software RG-LD-UYK-SYS1.0v

The Software RG-LD-UYK-SYS1.0v Software could be deployed on cloud platform and it can be connected to a variety of different types of detection and countermeasures equipments to achieve multi-detection data fusion and intelligent combination of multi-strike strategies, which applies to multi-deployment and separated processing tasks.

### PRODUCT FEATURES



Multi-equipment Integration



Cloud Platform Communication



# Reports And Applications



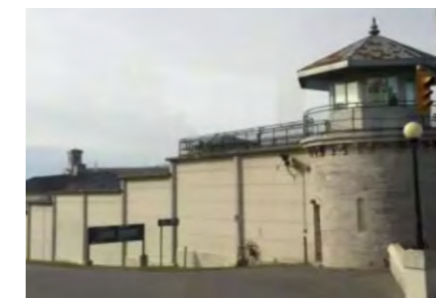
Government Meetings



Security Basements



Petroleum Basement



# Strategies

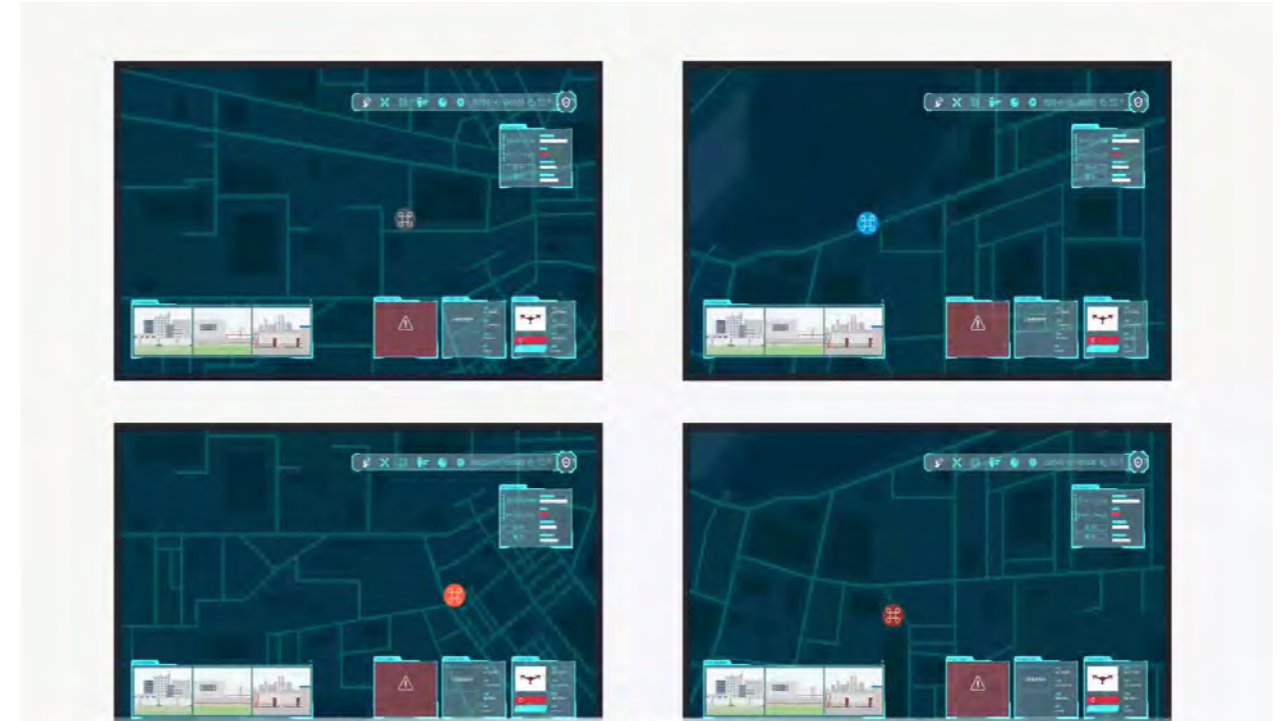
## ➤ No-fly Zone Projection



## ➤ Regional Rejection



## ➤ Directional Driving Away



## ➤ Accurate Trapping

