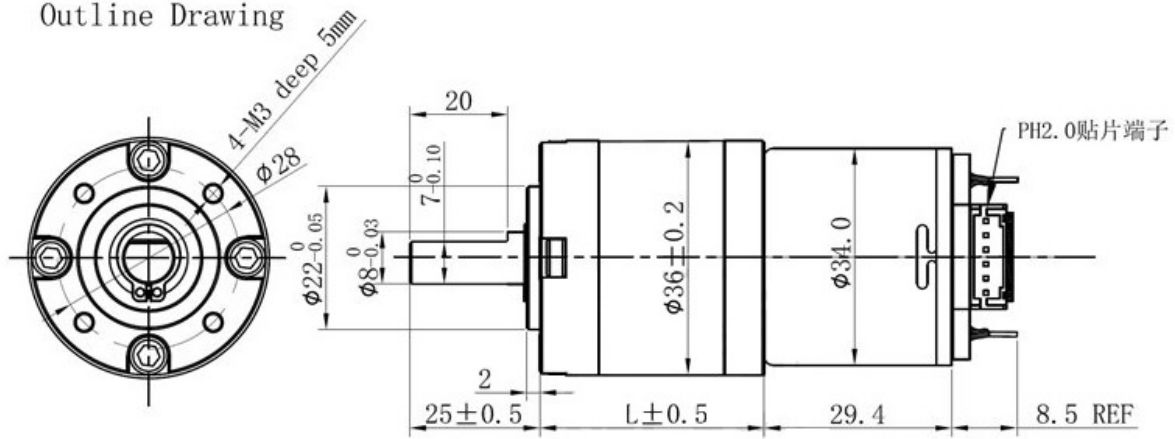


Outline Drawing



Voltage : 6 V      Power : 2 Watt

Gear ratio	L	No-load		Rated			At Stall	
	mm	Speed rpm	Current mA	Speed rpm	Current A	Torque Kg.cm	Torque Kg.cm	Current A
3.7	26.5	1250	< 300	625	< 1.5	0.2	0.4	< 3
5.2	26.5	900	< 300	450	< 1.5	0.4	0.6	< 3
14	34.5	330	< 300	165	< 1.5	1	1.8	< 3
19	34.5	245	< 300	123	< 1.5	1.5	2.5	< 3
27	34.5	172	< 300	87	< 1.5	2	3.5	< 3
51	42.5	91	< 300	46	< 1.5	4	6	< 3
100	42.5	47	< 300	23.5	< 1.5	7.5	12	< 3
139	42.5	33	< 300	17	< 1.5	10	15	< 3
264	50.5	17.5	< 300	9	< 1.5	20	25	< 3
515	50.5	9	< 300	6	< 1.5	35	50	< 3