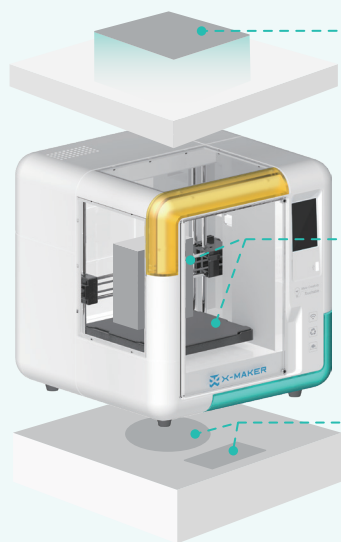


CREATING TOYS BETTER THAN PLAYING

Packing List



Quick Guide



Calibration Card



Power Cord



Filament Holder



Flexible & Magnetic
Base Plate



PLA Filament






Pliers



Tool Kit

 U Disk

-  Printable models
-  X-MAKER installer
-  X-PRINT installer

Carefully take out the
nozzle cleaner!

Notes

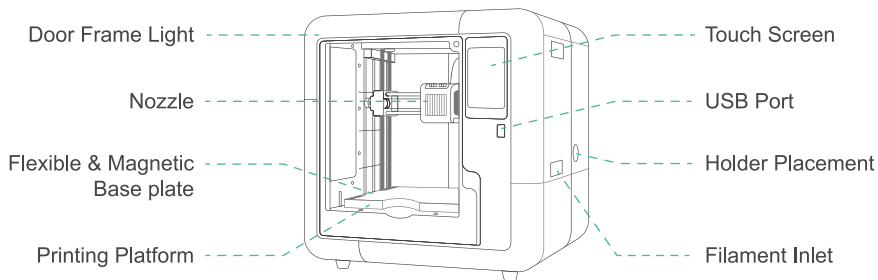
- AOSEED filaments are recommended. To avoid clogging in the nozzle, avoid frequently changing filaments of various brands.
- Please notice the supported versions when installing X-MAKER App
- The recommended ambient temperature for using the printer is 0 to 35°C. Please turn off the printer when not in use.

For more information, please visit www.aoseed.com

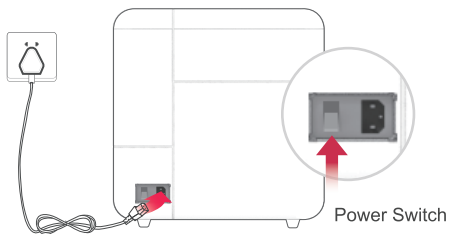


How to start?

X-MAKER 3D Printer



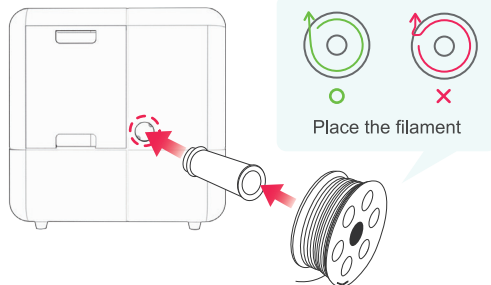
01 Power on



Note

Please keep your hands dry when pulling out the power cord. Connect the power cord first, then turn on the power switch.

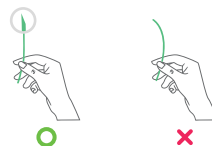
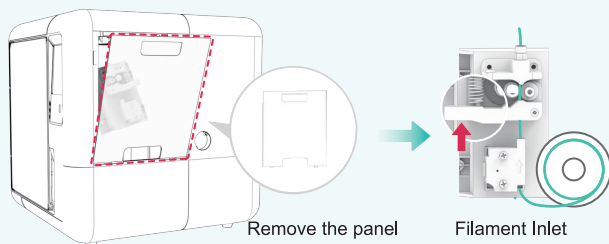
02 Install the filament holder



Note

Please make sure the filaments are not knotted or crossed before placing the spool in the holder.

03 Install the filament

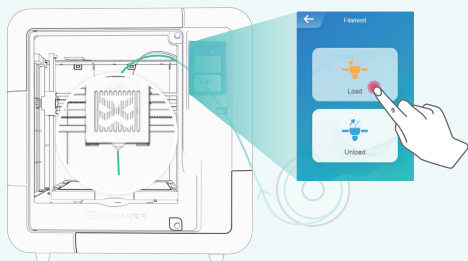


The tip of the filament must be straightened and cut into an oblique angle.

Note

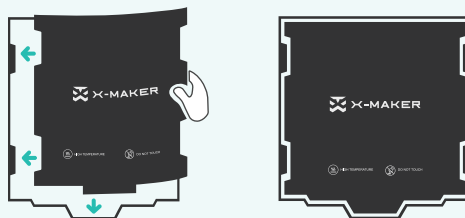
Insert the tip into the filament inlet until the prefeeder grabs the material. Push the spring up (as shown by the red arrow in the figure above), to make the filament enter smoothly.

04 Load the filament



Go to "Filament -> Load" and wait until the filament comes out of the nozzle. Repeat the above operation if the filament does not come out. (Clean the nozzle before printing.)

05 Place the Base Plate



Make sure the base plate is aligned with the heating platform.

Keep the base plate clean and flat after placing it.

06 Model printing



Creative U-disk Printable Models

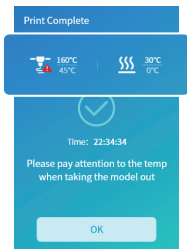


Easy-to-use one-touch printing with the X-MAKER App



More model data processing with the X-PRINT

07 Print complete



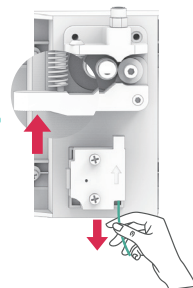
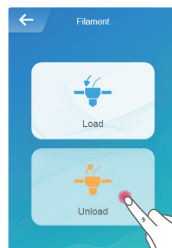
Remove the print



Remove support material

Let the printer cool down below 45°C before removing the model to prevent burns. Remove the support structures from the models with pliers.

08 Unload the filament



Go to "Filament -> Unload" and wait until the filament comes out from under the extruder gear. Push the spring up and pull out the filament. (If the tip of the filament is round, cut it off or you will damage the FES.)

X-MAKER App

Download and installation

For Windows PC

<https://www.aoseed.com/downloads>

Or, install the App from U disk

For Android Tablet / iPad

<https://www.aoseed.com/downloads>

Or, search “X-MAKER or XMAKER” in Googleplay / App Store

About the X-MAKER App



Print

AI-powered one-touch
printing feature



Design

Two LEGO-style and
user-friendly design



Explore

Constant new gameplay
and exploration



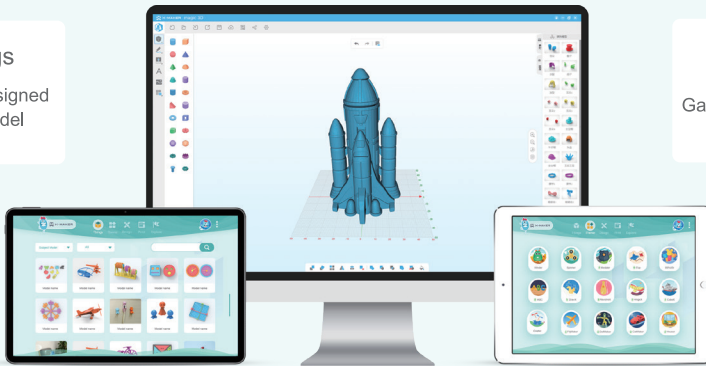
Things

Several well-designed
and growing model
databases

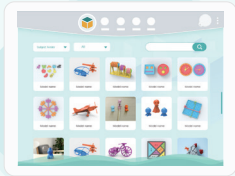


Theme

Gamification 3D design
mini programs

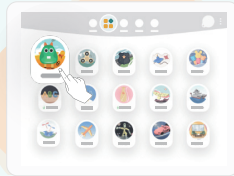


ONE-TOUCH PRINTING Make Creativity Touchable.



Things

Original well-designed model database with elaborate 3D models. Upon unboxing, you can start creating with the one-touch printing.



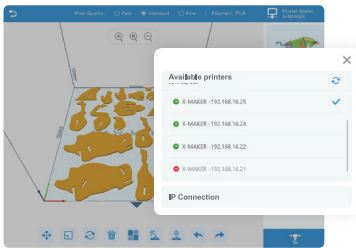
Theme

Gamify 3D design mini-programs with various modeling: sketch-based, revolving, building block and parameter. Easy to DIY your digital creations.



Design

Two free design software: 'digital building blocks' and 'digital clay', which are compatible with all 3D models and help you develop advanced creativity.



High-speed Wi-Fi & Easy-to-use one-touch Printing