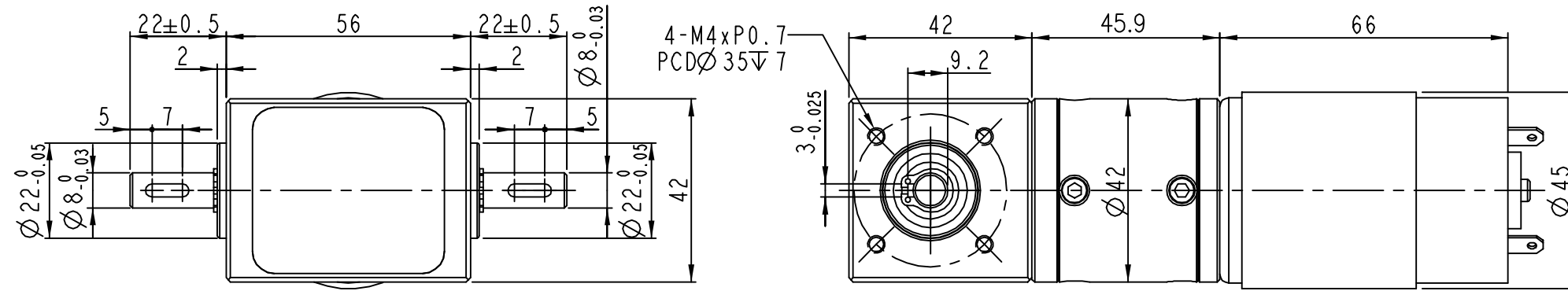
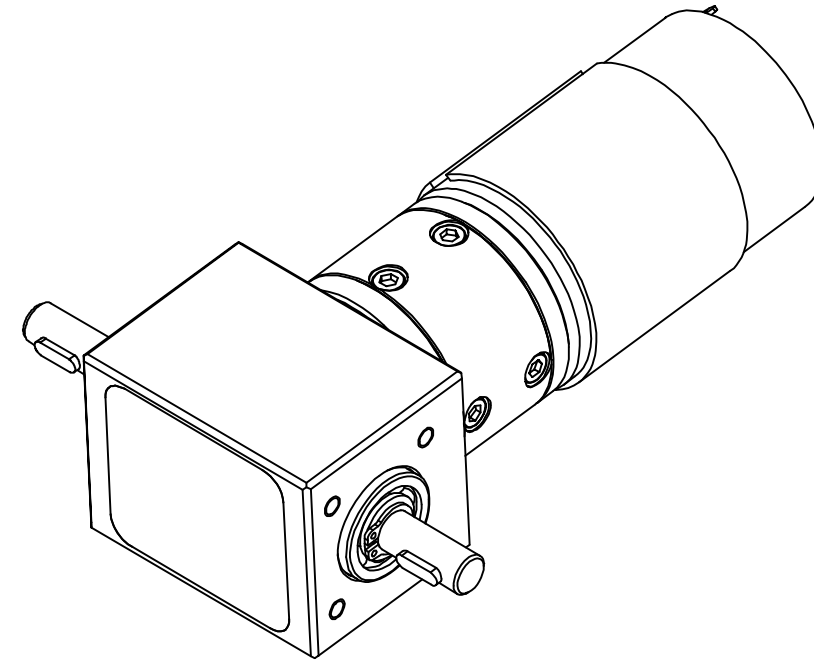


參考 REF.
估價 EVALUATE
試作 INITIAL
製作 MASS

版次 VER		設變單號 E C N		設變內容 DESIGN CHANGES CONTENT		日期 DATE	
A	NEW						20180523



Technical Data

1. Gearhead Type: Right Angle
2. Tooth Form: Spiral Bevel Gear
3. Ratio: 1:1
4. Output Shaft: Alloy Steel
5. Bearing Type: Ball
6. DC12V 7000RPM Motor
7. Planetary Gear Ratio: 61:1
8. Planetary Gear All Metal Gears
9. No Load Speed: 110RPM±10%
10. Rated Torque: 2.3Nm
11. Rated Current: 5A

Tom
核准 APPROVED BY
Dave
核對 CHECKED BY
Dave
繪圖 DRAWIN BY

熱處理 HEAT TREATMENT		品名 PART NAME	Right Angle gearmotor	單位 UNITS	mm
表面處理 SURFACE		料號 PART NUMBER	DN42P061-A-D42-2S	比例 SCALE	1/1
材質 MATERIAL		Duma Dynamics Co.,Ltd.			
重量 WEIGHT	克(g)				