

LoRaWAN Water Level Sensor

Water/Oil/Hydraulic Level



High precision probe



On-time monitoring



Long range transmission



Wireless configuration



Low power consumption



Built-in battery



IP68 waterproof



LoRaWAN Class A/C

High precision probe

Anti-Surge, Anti-interference



Quick
Response in
1 Second

316L
Stainless
steel
diaphragm



Anti-block
design



IP68 Waterproof

High reliability



Working Temp: -40-85°C, suitable for harsh environment

On-time monitoring

Data display any time on mobile or laptop



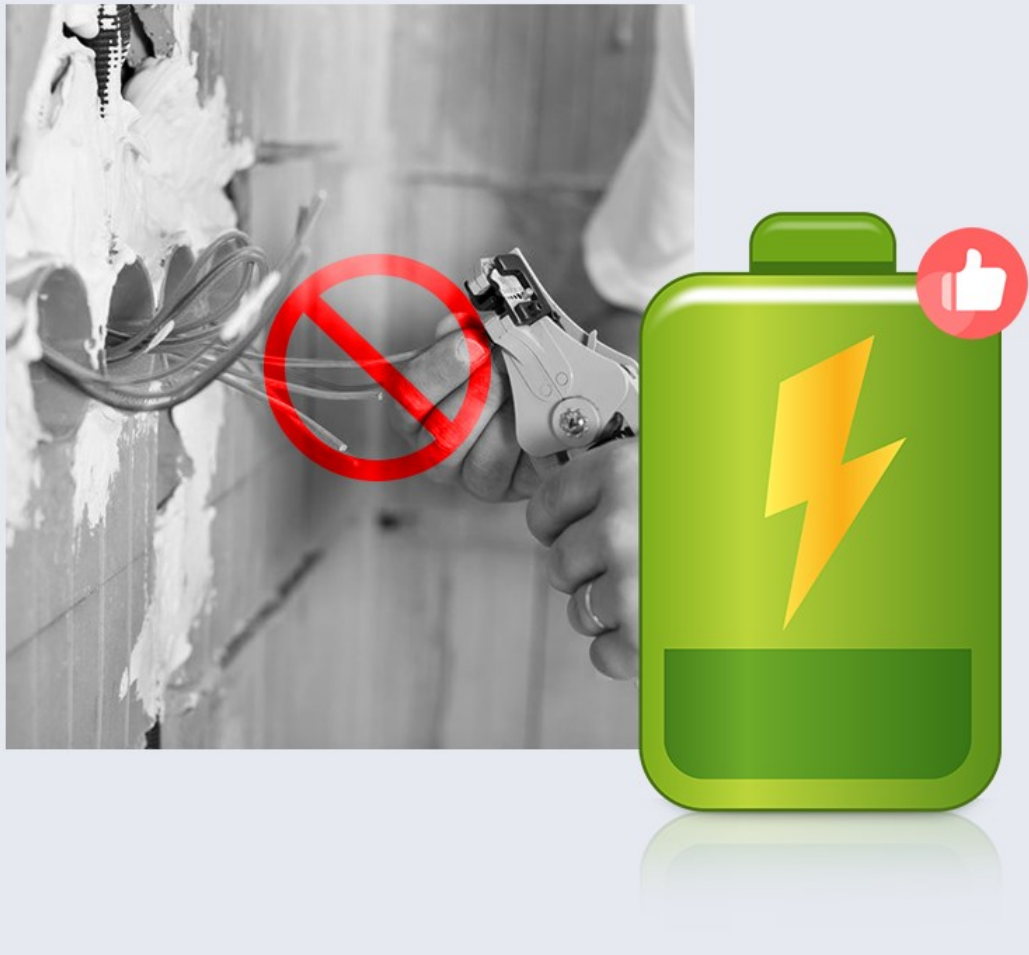
Strong penetration Long range transmission

Built-in LoRa wireless chip

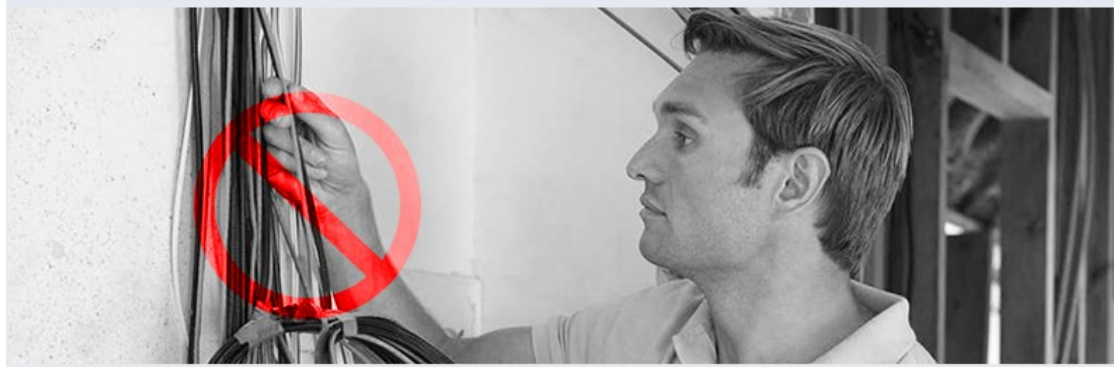


Built in Battery

19000mAh Li-battery, up to 5 years



Wireless configuration



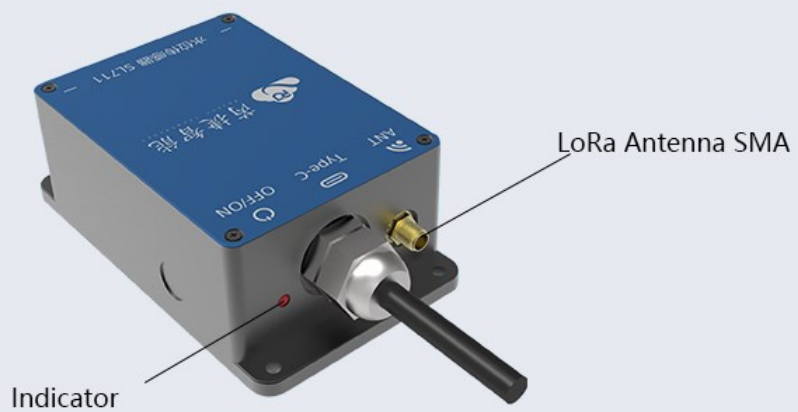
Multi-applications Customization available



Details



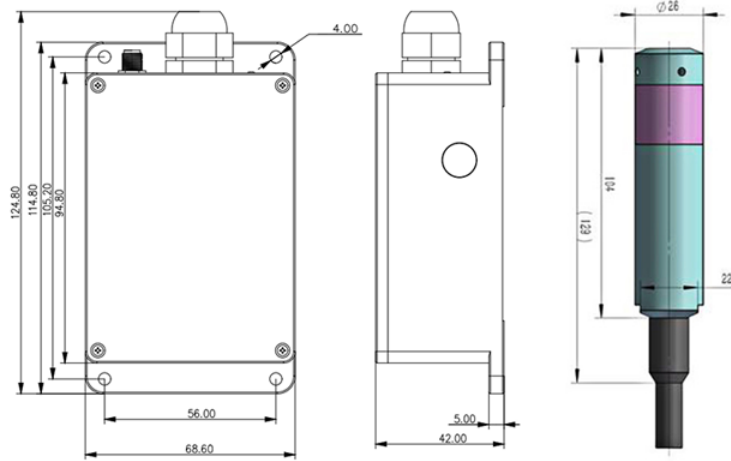
Water level sensor



LoRa Antenna SMA

Indicator

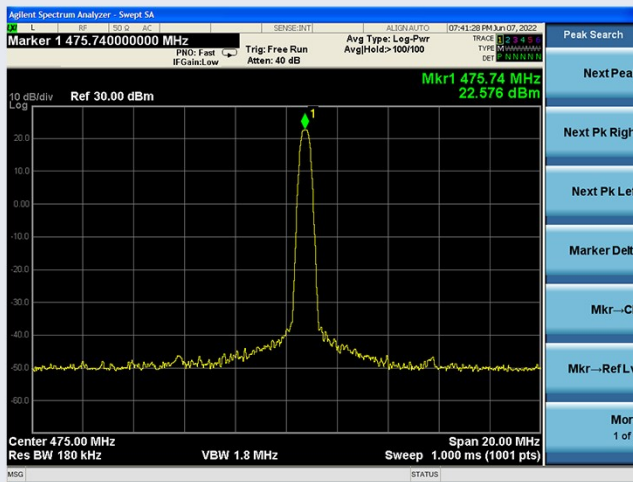
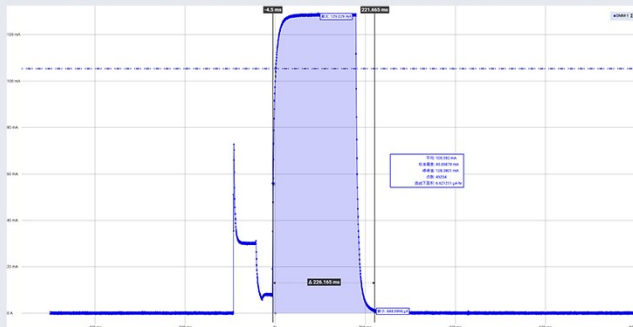
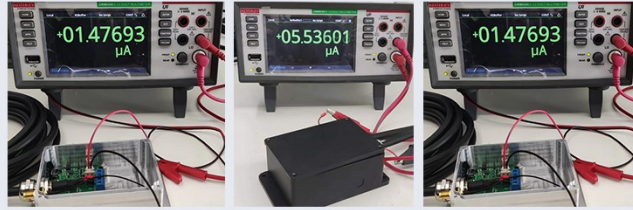
Small size



单位: mm

Parameters	Feature
CPU	M0+
Wireless	LoRa (SX1268)
Battery	Built-in Li battery
Battery capacity	19000mAh
Service life	3 years
Communication ways	Half duplex
Response time	5 seconds (configurable)
Working temperature	-40 °C ~ 85°C
Working Humidity	0-100%RH
Measure range	1 ~ 5m
Precision	0.25%FS
Data rate	300 bps-62.5k bps
Size	124.8mm*68.6mm*42mm
Transmit power	Max 22dBm
Receive sensitivity	-140dBm
Working frequency	SX1268: CN470 ; SX1262: EU868 / US915 / AS923/...

Lab testing



测试项目名称	数据
Time	24h
Connecting period LCP	10s
Updating period LFT	600s
SF	95F
Updating time	0.225s
Connecting time	89ms
TX current	140mA
Collecting current	22mA
Sleeping current	0.006mA
Single collecting power	0.544uAh
Single TX power	8.75uAh
24h collecting power	4.6992mAh
24h TX power	1.26mAh
24h sleeping power	0.144mAh
24h total power	6.1032mAh
1 year total power	≈2228mAh Low power consumption

Note: Lab testing based on 19000mAh Li-battery, last up to 8 years.