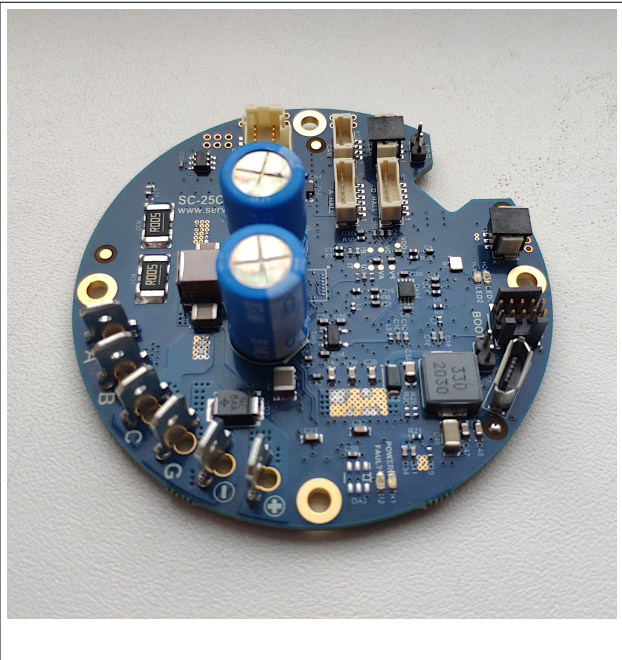
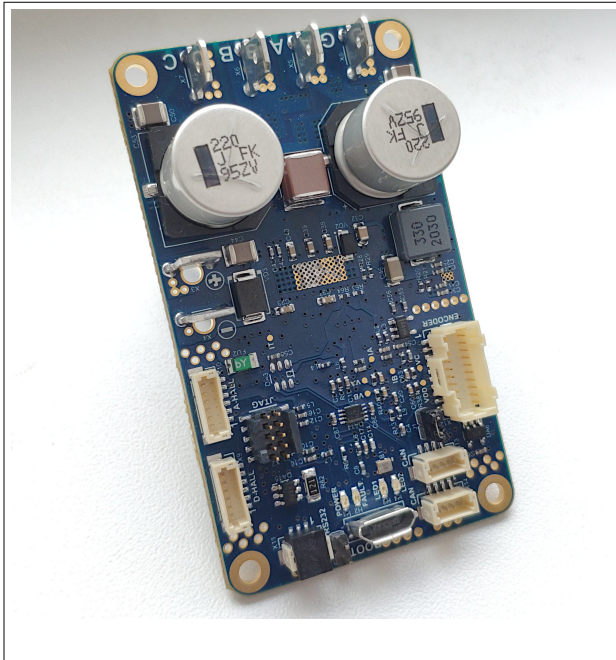


# Connecting Futaba R7008SB Receiver to Servosila SC-25 Brushless Motor Controller

## Technical Note

Revision A

February, 2023



[www.servosila.com/en/motion-control](http://www.servosila.com/en/motion-control)

## Table of Contents

Introduction.....	3
Futaba PWM output interface.....	3
RC PWM configuration settings.....	3

## Introduction

Servosila SC25 Brushless/Brushed Motor Controllers are capable of taking in a PWM signal and using it as a reference signal to control either speed (throttle) or servo position.

This note is written in regards to **Futaba R7008SB Receiver** which is a typical RC radio receiver.

## Futaba PWM output interface

Futaba R7008SB Receiver is capable of producing standard PWM signals to RC servos or a proprietary S.Bus serial output. This note is concerned with the standard PWM output only.

For wiring instructions, refer to the datasheets of both the controller and the receiver.

## RC PWM configuration settings

The following configuration settings of the RC PWM interface of Servosila SC-25 controllers have been found to work with the **Futaba R7008SB Receiver**.

Peripheral: RC PWM Input			
enable	1	0 or 1	Power Cycle
PWM capture interface	1	0 or 1	Power Cycle
pulse period	0.01499999996647	sec or clocks	
max pulse width (angle=360 deg)	0.0019405999919	sec or clocks	
min pulse width (angle=0 deg)	0.0011005999986	sec or clocks	
inverted installation	0	0 or 1	
polarity inversion	0	0 or 1	Power Cycle
bidirectional speed	0	0 or 1	Power Cycle



*Servo drives designed around SERVOSILA SC-25C  
brushless motor controllers*

**YouTube:** <http://www.youtube.com/user/servosila>

[www.servosila.com/en/motion-control](http://www.servosila.com/en/motion-control)