

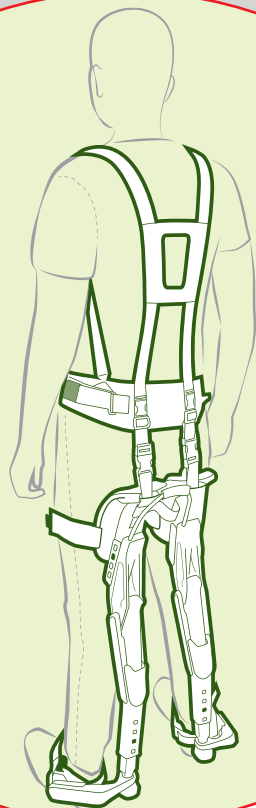
OPERATING INSTRUCTIONS

Chairless Chair

EN | Original Operating instr.

www.carlstahl.com

Mit Sicherheit verbunden




CARL STAHL

Contents

1. Introduction	3
1.1 Manufacturer / Service.....	3
1.2 EU Declaration of Conformity.....	4-5
2. Preparation of information	6
2.1 Symbols and designations	6-7
2.2 Handling instructions and lists	7
3. Warnings and hazards	8
4. Technical data	9-12
4.1 Overview.....	9
4.2 Part designation	10-11
4.3 Seat angles and seat heights	12
5. Places of usage	13
6. Maintenance	14
7. Visual inspection and troubleshooting	15
8. Storage and disposal	15
9. Notes	16
10. Operating instructions	17-25
10.1 Assembly	17
10.2 Size adjustment.....	18
10.3 Putting on	19-20
10.4 Shoulder belt	21
10.5 Alignment on the body	22
10.6 Usage	23-24
10.7 Taking off	25

1. Introduction

The Chairless Chair® 2.0 is a wearable ergonomic mechanical device designed for use on production and assembly lines. It allows the user to rest from time to time while working without a chair. It is not a substitute for chairs or stools. Do not use as an office chair or normal chair.

Before using the Chairless Chair® 2.0 for the first time, read the operating instructions carefully. The operating instructions explain how to use, maintain, check and dispose of the Chairless Chair® 2.0 safely. This user manual is an integral part of the product and must be available to all users. Keep the operating instructions for future reference.

1.1 Manufacturer/Service

Carl Stahl GmbH

Tobelstraße 2

73079 Suesen

Phone

+49 (0) 7162 4007-0

E-Mail

carlstahl@carlstahl.com

Internet

www.carlstahl.com



INFO

We will be happy to answer any questions you may have about your product.

1.2 EU Declaration of Conformity

Textual reproduction:

For the following product

Designation:	Chairless Chair
Material number:	45253205035125

we hereby declare that it corresponds to the **basic requirements** specified in the harmonization legislation named below:

DIRECTIVE 2006/42/EC OF THE EUROPEAN PARLIAMENT AND THE COUNCIL of May 17, 2006 about machines and the change of Directive 95/16/EC (new version) – in short: Machinery Directive
--

Specification of the applicable harmonized standards that apply or details of the specifications for which conformity is declared:

Reference	Date of issue	Title
Harmonized standards for the Machinery Directive:		
EN ISO 12100 + Correction 1	2011-03 2013-08:	Safety of machines – General principles for design – Risk assessment and risk reduction

Authorized within the meaning of Annex II No. 1. A. No. 2, 2006/42/EC for the compilation of the technical documents:

Company	Carl Stahl GmbH
Address	Tobelstr. 2 D-73079 Suessen

Sole responsibility for issuing this declaration of conformity with regard to meeting the basic requirements and the preparation of the technical documents is borne by the manufacturer (or installation company):

Company	Carl Stahl GmbH
Address	Tobelstr. 2 D-73079 Suessen

Declared by:

Last name, first name	Kehrer, Tobias
Title	Managing Director

This declaration certifies conformity with the named harmonization legislation, however it does not promise properties.

This declaration applies to all copies that are manufactured according to the corresponding production drawings, which are a component of the technical documents. The attached accompanying documentation that supports the declaration of conformity contains additional details about adherence to above references.

The complete declaration of conformity is attached as a separate document.

2. Preparation of information

These operating instructions contain symbols, designations, instructions, and lists as depicted in Chapters 2.1 to 2.2.

2.1 Symbols and designations

Warnings

The warnings are classified and depicted as follows:



DANGER

A warning with the signal word "DANGER" indicates a hazard that can immediately and certainly cause death or severe, lasting injuries.



WARNING

A warning with the signal word "WARNING" indicates a hazard that may cause severe injuries or death.



CAUTION

A warning with the signal word "CAUTION" indicates a hazard that may cause minor to moderate injuries.

ATTENTION

A warning with the signal word "ATTENTION" indicates a hazard that may cause property damage.

In a **warning** steps are marked with ► and structured chronologically.

Nützliche Informationen und Tipps



INFO

This symbol identifies useful information and tips.

Entsorgung



NOTICE ABOUT DISPOSAL

of packaging materials and load lifting devices.

2.2 Instructions and lists

All instructions are structured in chronological order and numbered sequentially, e.g.:

1. Step 1
2. Step 2

The result of an action is marked with an arrow:

- ▶ Result or device reactin

Instructions that do not have to be carried out in a particular sequence are marked as follows:

- Step
- Step

The result of an action is marked with an arrow:

- ▶ Result or device reactin

Lists are marked with dashes:

- List

3. Warnings and hazards



WARNING

Use with caution: Incorrect use of the device can result in serious injury.

Always read the operating instructions before use. Carl Stahl recommends using the device only after instruction and training. Users must be instructed and trained by a certified or experienced instructor.

The Chairless Chair® must not be used as a medical device or by people with physical disabilities. The device must be used in strict compliance with the operating instructions and safety guidelines. Failure to do so may result in serious injury. In the event of an emergency, remove the Chairless Chair® immediately.



Tampering with the appliance will immediately invalidate the warranty



The use of stairs, platforms etc. is strongly discouraged!



The risk of injury when using tools and operating machines must be clarified in each individual case



Do not load the full bodyweight onto a single device leg



Use caution when touching the device; your fingers can get pinched



Only use at designated workplaces



There is a danger of falling backwards, if the sitting height setting is adjusted while sitting



Caution while running



Problems or defects should be reported immediately



Do not use in case of damage or improper fit



Do not exceed the max load of 120 kg



Be aware of your increase body perimeter, risk of tripping or stumbling might increase



Caution when sitting down; do not recline



Caution while walking on slanted floors, grids and moving floor elements

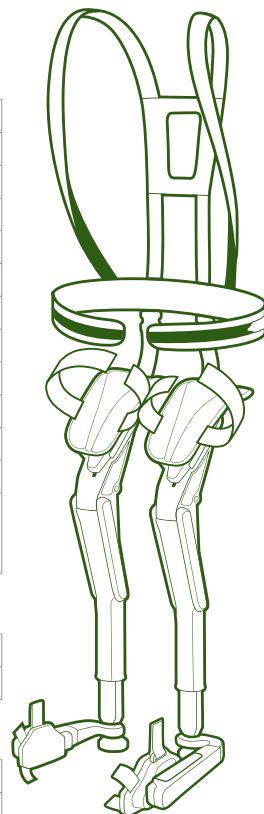


In case of emergency take the device off immediately

4. Technical data

4.1 Overview

Maximum load:	120 kg
Weight of the device:	2.95 kg ^(A)
Dimensions:	75 x 20 x 15 cm
Height of wearer:	1.50 - 2.00 m ^(B)
Sizing on the upper leg:	XS, S, M, L
Sizing settings on the lower leg:	XS, S, M, L
Operation:	mechanisch
Weight support:	keine
Standing up in an emergency:	möglich
Average time to put on:	30 s ^(C)
Average take-off time:	10 s ^(C)
Range of temperature:	0 - 45 °C ^(C)
Materials used:	PA 6, PA 66 GF, PA 66 CF, PA 12, POM, PTFE, ABS, Iglidur W300, TPE, EPDM, NBR, 1.4301, 1.4310, 1.4401, ZnAl, Zinc, Aluminium 7075, Hydraulik-oil



Shoulder belt

Size S:	Confection size S, M
Size L:	Confection size (M), L, XL

Flexibelt

Size (waist):	L + Extender	108 cm - 136 cm
	L	72 cm - 104 cm
	M	60 cm - 86 cm
	S	54 cm - 70 cm

Click Slider

Maximum extension length:	10 cm
Compatible shoe size:	36 - 45 (EU)

^(A) Without textiles.

^(B) Guidelines. Depends on the actual length of legs and proportions.

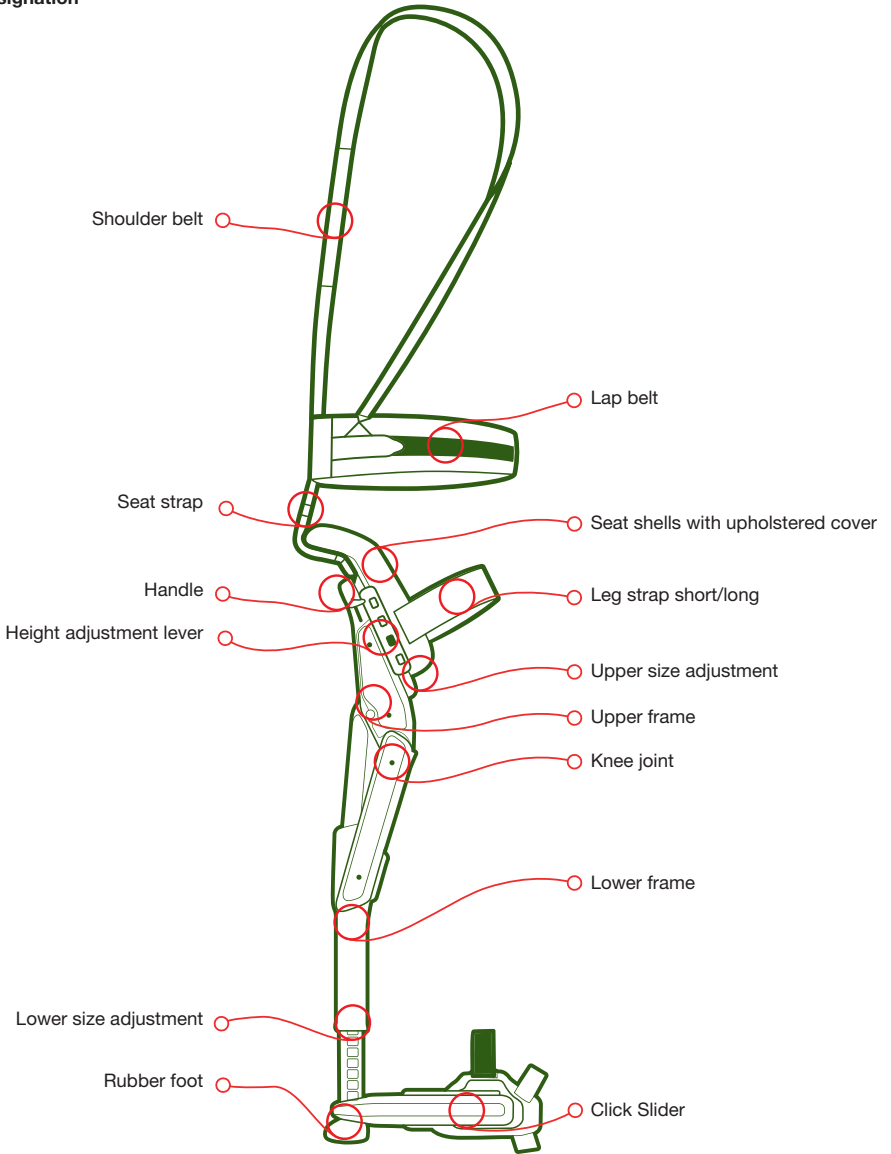
^(C) Information provided without guarantee.

The device does not contain silicone and / or surface metal parts.

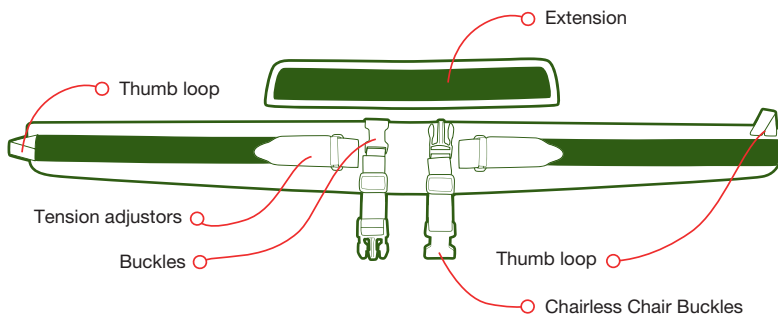
It is splash proof. Chemical resistance will have to be determined in each case individually.

The textiles consist of polyester, they are neither highly flammable nor flame retardant. Usage in hazardous environment needs to be assessed in each case individually.

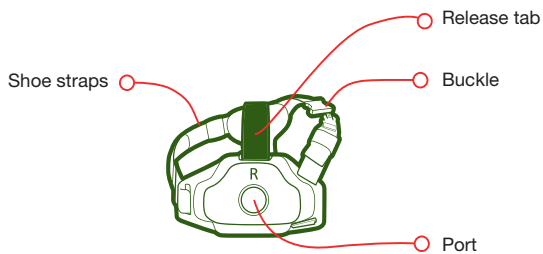
4.2 Part designation



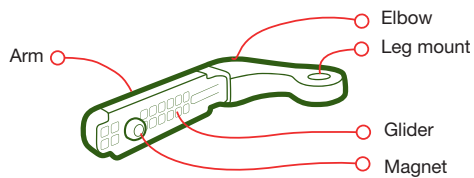
Belt



Glicker

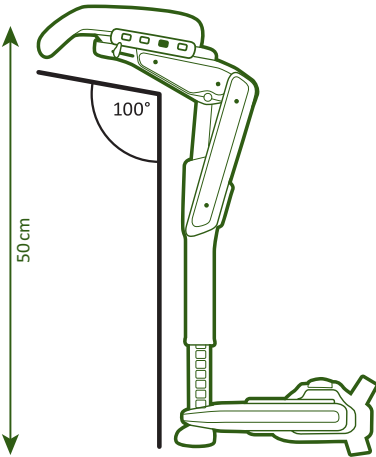


Slider



4.3 Seat angles and height

Minimum sitting angle

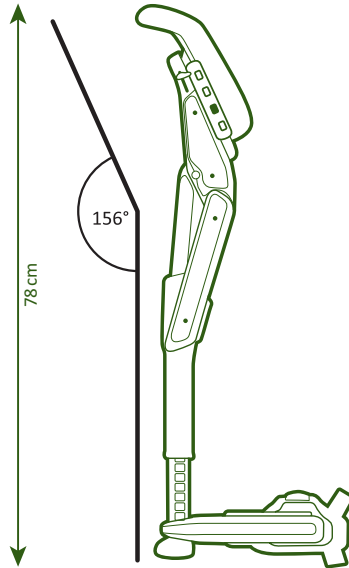


Sitting height:

for sizing (L, L) = 65 cm

for sizing (XS, XS) = 50 cm

Maximum sitting angle



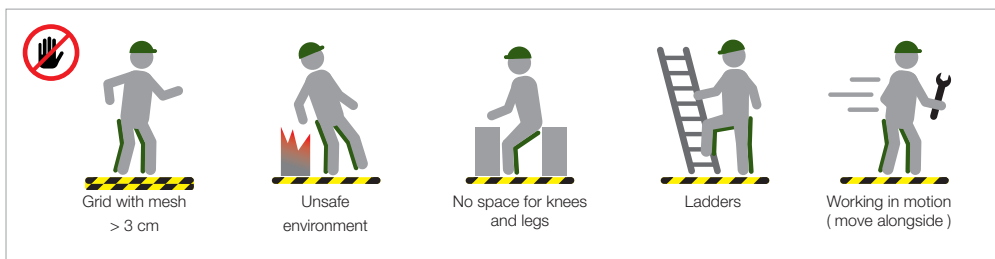
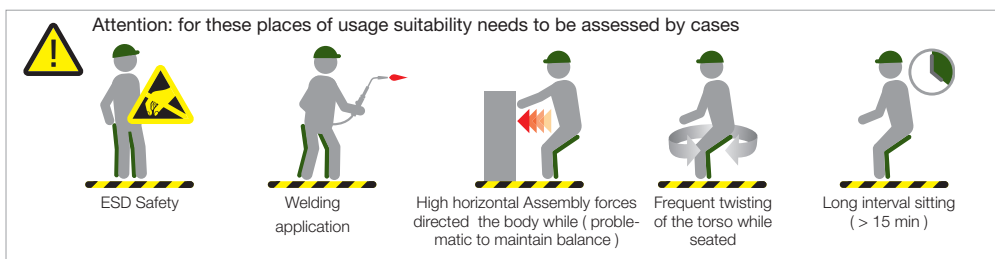
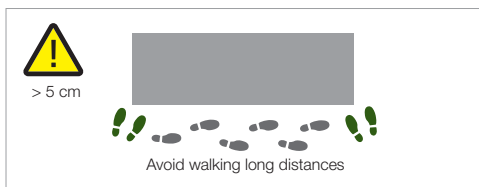
Sitting height:

for sizing (L, L) = 78 cm

for sizing (XS, XS) = 62 cm

5. Places of usage

All statements are without guarantee or claim of completeness.



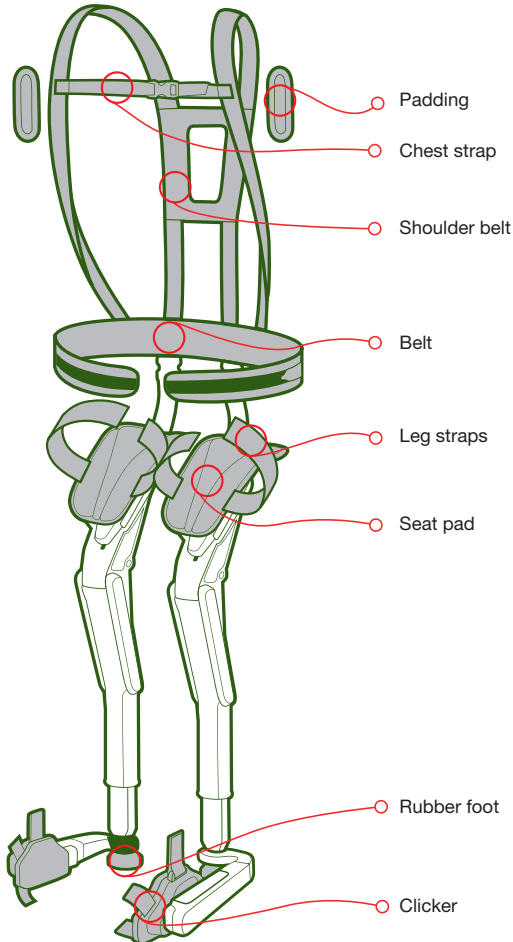
6. Maintenance

Parts subject to normal wear and tear



WARNING

Parts that are not subject to normal wear and tear do not need maintenance; an occasional visual inspection should be performed. In case of a defect, please contact noone immediately. Opening or tampering with the device will immediately void the 2-year warranty. The parts subject to normal wear and tear are not included in the warranty.



7. Visual inspection and troubleshooting

Before using the Chairless Chair, please check the following points:

- The upper and lower size adjustment is easy to change
- The buttons for the size selection lock into place properly
- The rubber feet are properly installed and fit well
- The shoe-connectors are properly installed and do not show any signs of breakage in the plastic or tears in the rubber
- Both seats move when pressure is applied forward. When the pressure is relieved they slide back in place
- The sitting height adjustment lever is located on the outside of the right leg of the user
- When pulling the height adjustment lever, both legs move easily and simultaneously
- The carrying handle at the backside of the device does not show any form of damage
- The zipper at the carrying handle must be completely closed
- The straps attached at back of the seat are not tangled and move freely in their slots
- The velcro of the straps attached at the back of the seat is closed completely
- The seating pads are positioned properly
- The steel spring as well as the axis are properly fixed in place (beneath the seat pad inside the seat)
- The slip resistant patches on the seating pad are sufficiently intact
- The leg straps are correctly attached and do not show any signs of structural damage
- The belt and shoulder belt are correctly attached, and the buckles undamaged



All textile parts (shoulder belt, shoulder cushions, belt and back cushioning included, leg straps, seat pads) are machine washable at 30°C.

The surface of the device can be wiped down with water. Compatibility with cleaning solutions must be tested in each case (a list with all materials is included in the technical information).

8. Storage and disposal

The chairless chair can be hung on a hook.

Use either the padded carrying handle, the waist strap or the shoulder strap.

If the chairless chair is stored horizontally, ensure that the shoe connections are not damaged.



NOTICE ABOUT DISPOSAL

The wearing parts are not recyclable and can be disposed of with normal operating waste.

9. Notes

**WARNING**

Handle the Chairless Chair with care.

Lift or carry the Chairless Chair only by the intended carrying handle, the belt or the shoulder belt.

Damage to the carrying handle might occur, if the Chairless Chair is lifted or carried by its legs only!

Do not twist the legs, as this may result in damage to the carrying handle.

Do not step onto the plastic parts of the shoe-connectors.

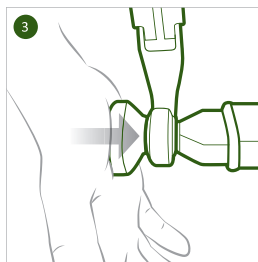
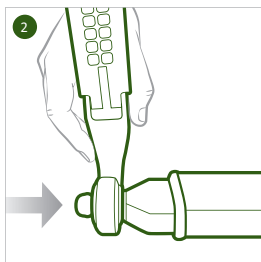
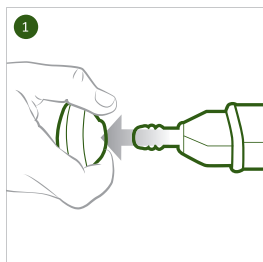
If the lever for adjusting the sitting height is jammed:

- do not apply excessive force
 - Contact Carl Stahl
-

10. Operating instructions

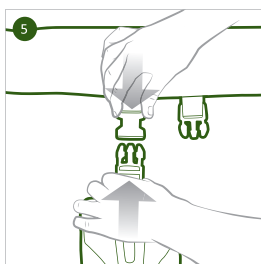
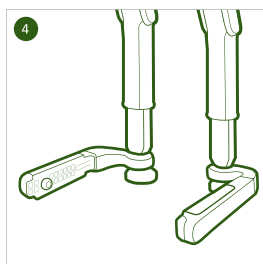
10.1 Assembly

Slider

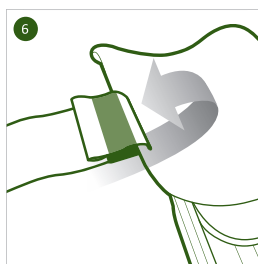


Push firmly

Seat belt

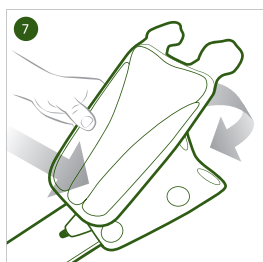


Leg straps

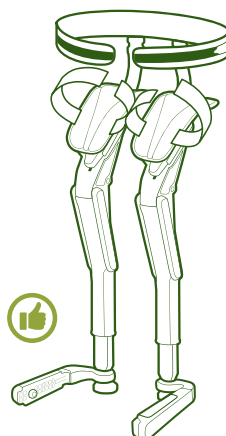
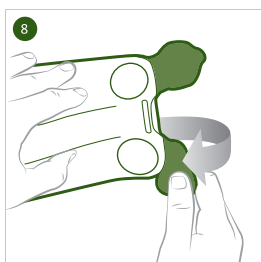


Attach the leg straps to the seats

Seat pads

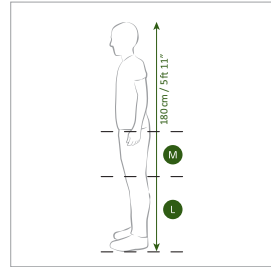
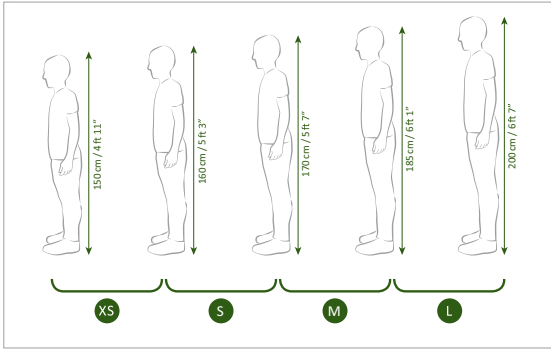


Attach the seat pads to the seats



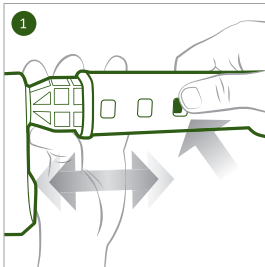
10.2 Size adjustment

Sizing guidelines

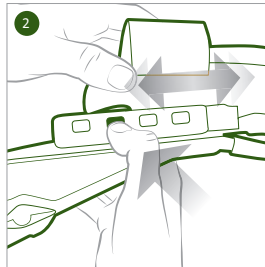


The height of the body is for reference only. The sizes of the upper leg frame and lower leg frame do not have to match. They should be fitted individually.

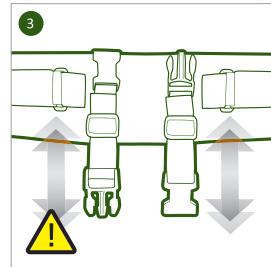
Lower size adjustment



Upper size adjustment



Seat belt adjustment

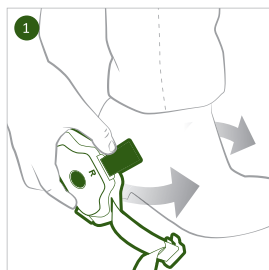


ATTENTION:

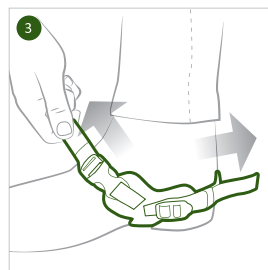
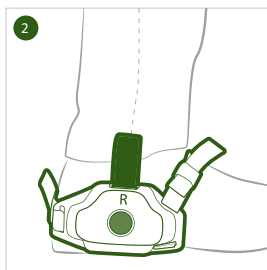
To set to same length!

10.3 Putting on

Clicker

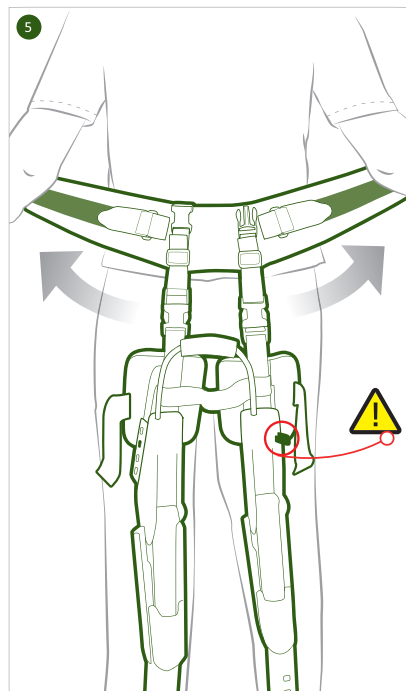
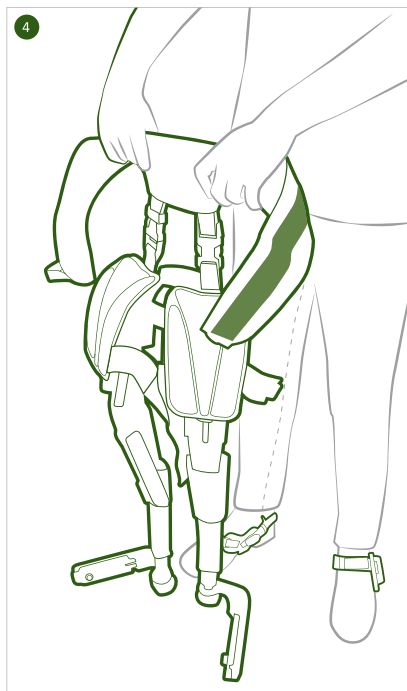


Fasten the buckle over the top of the shoe with the clicker port on the outward side of the shoe. Adjust the tension with the front and back shoe straps.



Pull straps tight and tuck away loose ends.

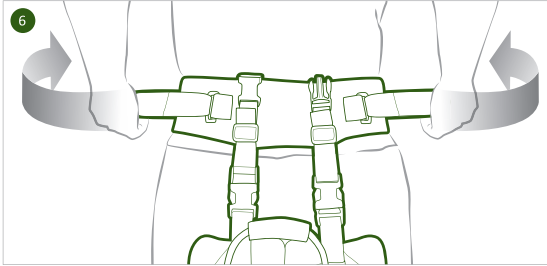
Putting on without shoulder belt



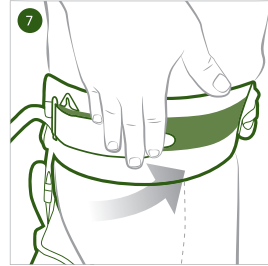
Fasten the belt over the hips securely. The lever for the height adjustment must be positioned on the outside of the right leg.

10.3 Putting on

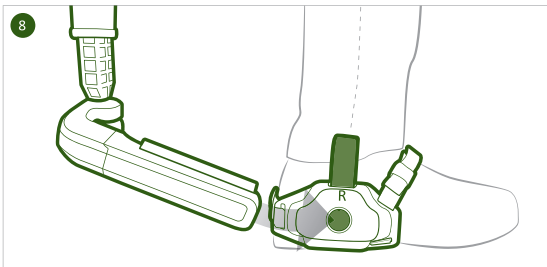
Putting on without shoulder belt



Pull both tension adjusters forward to the desired fit and attach to belt. Taking off the belt follows the opposite order.

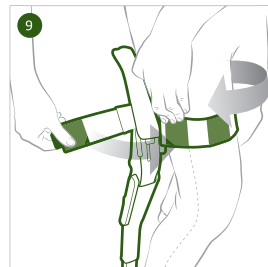


Latch slider in clicker

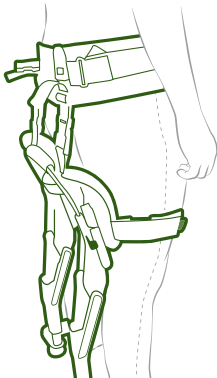


Stand normally and guide the slider magnet into the clicker port.

Leg straps

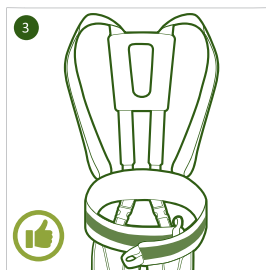
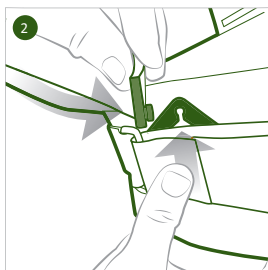
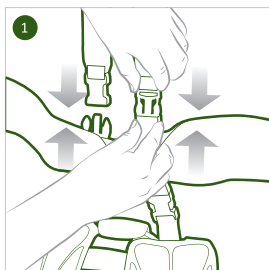


Close the leg straps with shorter part on top. Do not tighten excessively.

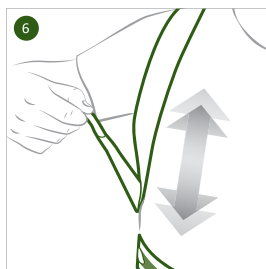
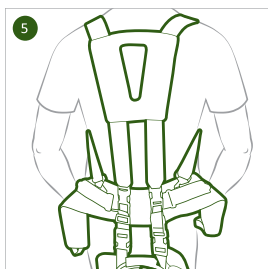
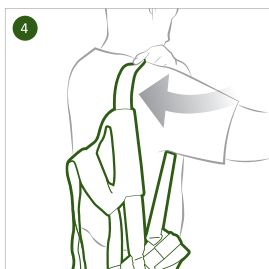


10.4 Shoulder belt

Assembly



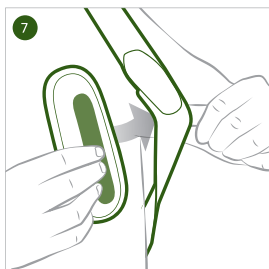
Putting on with shoulder belt



Fasten belt then continue as illustrated on page 16, steps 6 - 9.

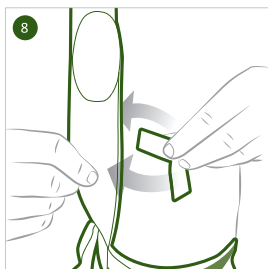
Both sides

Padding

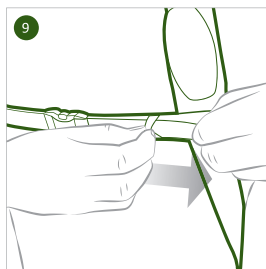


Optional

Chest belt

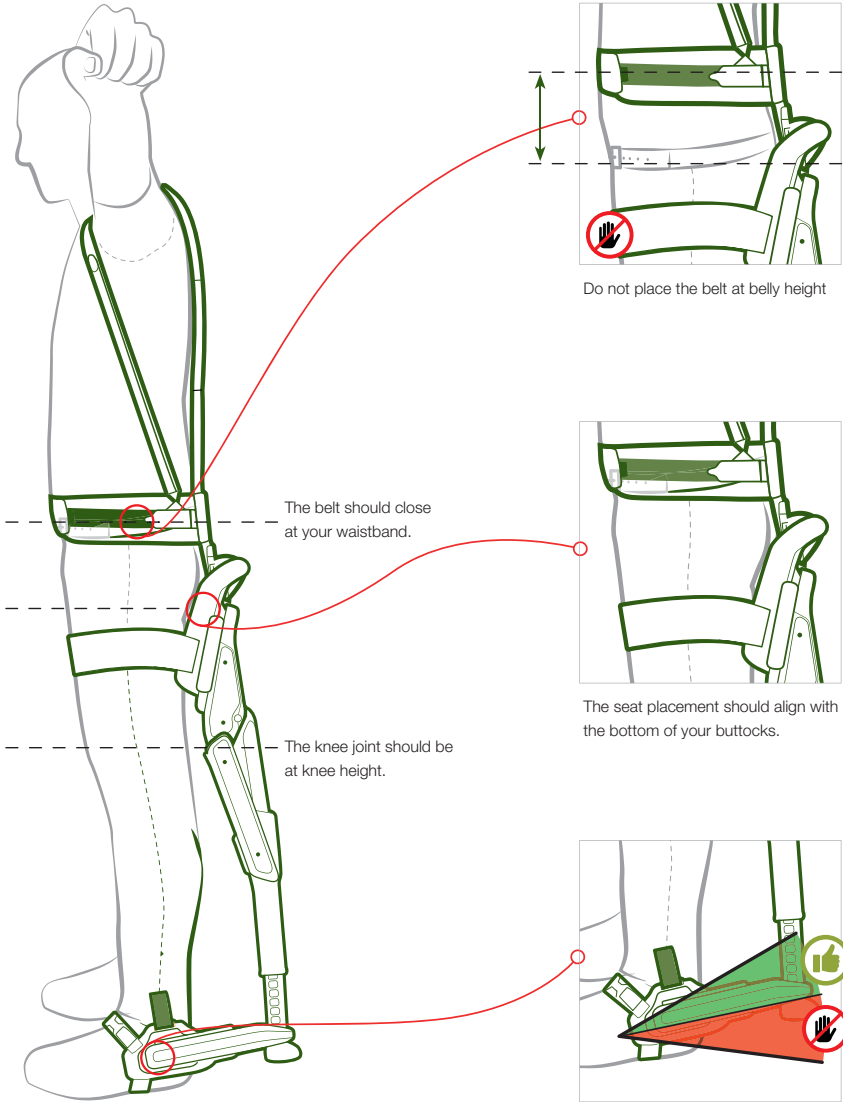


Both sides



Adjust length

10.5 Alignment on the body



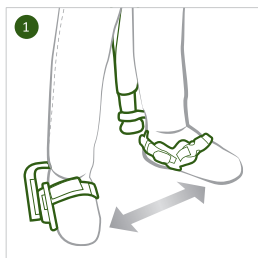
10.6 Usage



WARNING

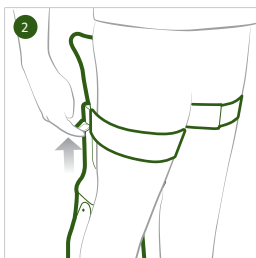
Please ensure to read the manual prior to first use. Noonee strongly recommends the use of the device only after the successful completion of introductory user training. New users must first receive training provide by an officially noonee certified instructor. Use caution when sitting down.

Correct posture

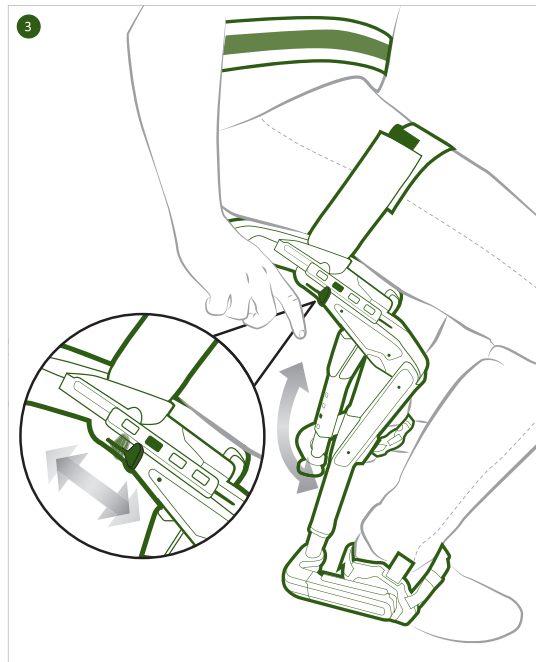


Stand shoulder width apart.

Activate lever



Pull the sitting height adjusting

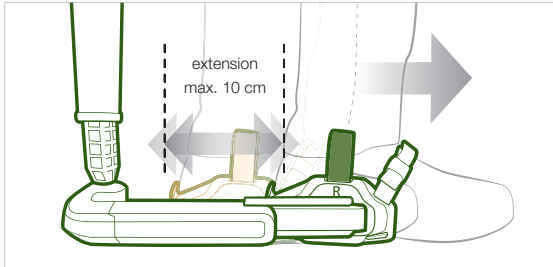


Pull lever, adjust sitting height, let go to fix desired position.

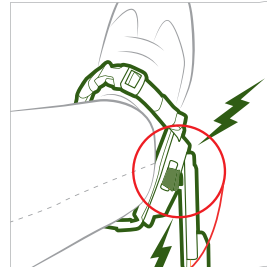
- The height adjustment lever only needs to be used when a change the sitting height is desired. The sitting height re- mains at the same height until the next usage of the height adjustment lever.
- Before using the height adjustment lever to change the sitting height, the body weight resting on the Chairless Chair must be reduced.
- To simply stand up the lever does not have to be engaged.
- The use of the Chairless Chair requires active sitting. This means to maintain a stable, balanced sitting position, one must be able to adjust the position of the pelvis from time to time.

10.6 Usage

Freedom of movement



It is possible to move your feet forward while sitting.



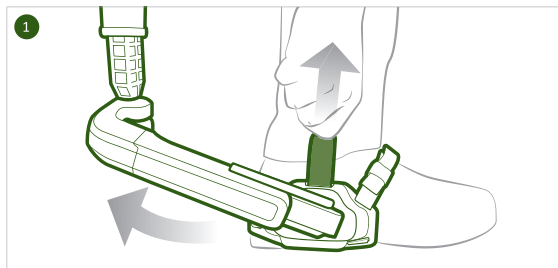
ATTENTION:
do not twist feet out of alignment.
Irreparable damage may occur.

Troubleshooting

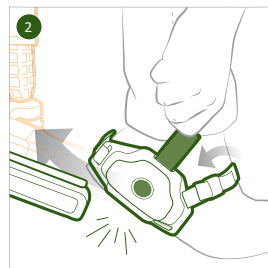
Problem	Solution
The rubber foot touches the ground while walking.	First adjust the upper size adjustment, adjust the lower size afterwards if needed.
The knee joint is creating pressure on the calve.	Adjust the upper size one size smaller or the lower size adjustment larger.
The belt is sliding down while walking.	Adjust the shoulder belt size and/or change the size of the upper size adjustment, tighten the belt.
The user slides off the seating pads.	Push the belt slightly down, adjust the shoulder belt to a larger size.
The shoulder belt creates discomfort on or below the shoulders.	Attach the vest padding or loosen the straps of the vest.

10.7 Taking off

Detach slider from clicker

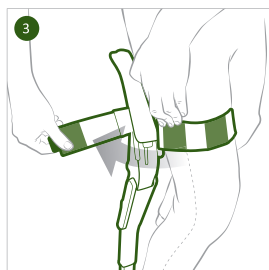


First, pull red tab on the clicker to release the slider magnet.

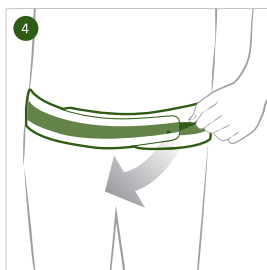


Lift heel and slightly turn it outwards.

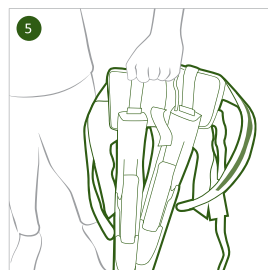
Release leg straps and belt



Open the leg straps.

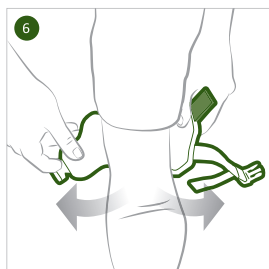


Open the belt.



The shoulder belt or the belt should always be taken off last to avoid the Chairless Chair falling uncontrollably.

Take off clicker



Carl Stahl GmbH

Tobelstr. 2 | 73079 Suessen

Phone +49 (0) 800 244 2441-11

E-Mail carlstahl@carlstahl.com

Internet www.carlstahl.com

