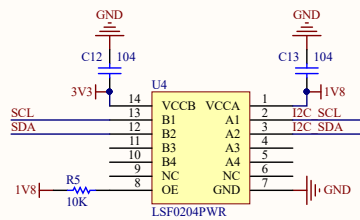
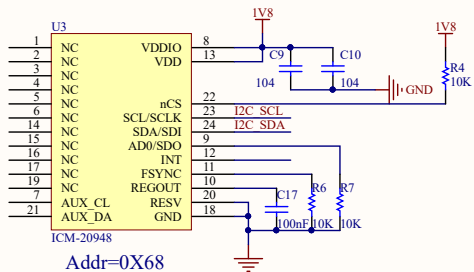


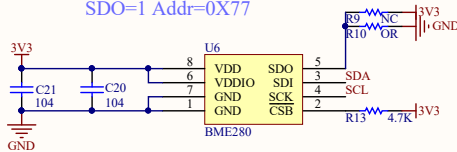
VOC



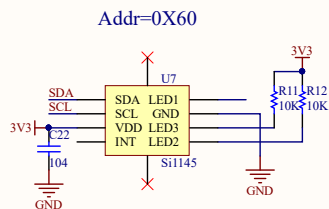
Gyroscope/Acceleration/Magnetometer



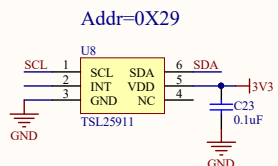
SDO=0 Addr=0X76
SDO=1 Addr=0X77



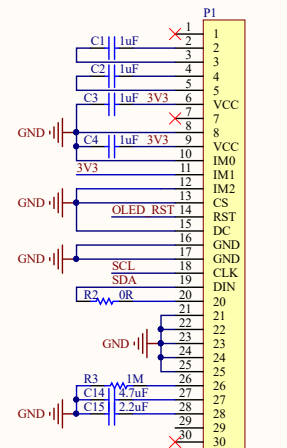
Atmospheric Pressure
Temperature and humidity



UV

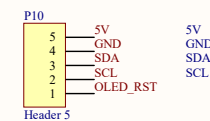
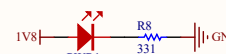
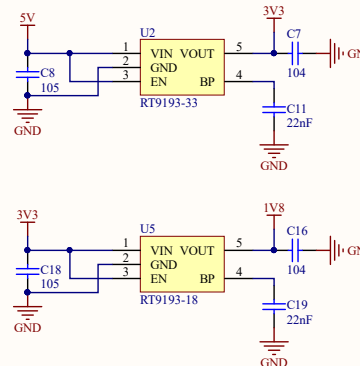


LIGHT



Addr=0X3C SH1106 OLED

1.3inch OLED



JET 24	OLED_RST
JET SDA	SDA
JET SCL	SCL
JET 5V	5V

BCM	W/P
1	1
3	2
5	3
7	4
9	5
11	6
13	7
15	8
17	9
19	10
21	11
23	12
25	13
27	14
29	15
31	16
33	17
35	18
37	19
39	20

P2			
1	3.3VDC	5V	2 JET 5V
JET SDA	I2C_2_SDA	5V	4 JET 5V
JET SCL	I2C_2_SCL	GND	6 GND
7	AUDIO_MCLK	UART 2_TX	8
9	GND	UART 2_RX	10
11	UART_2_RTS	I2S_4_SCLK	14 GND
13	SPI_2_SCK	GND	16
15	LCD_TE	SPI_2_CS1	18 JET 24
17	3.3VDC	SPI_2_CS0	20 GND
19	SPI_1_MOSI	GND	22
21	SPI_1_MISO	SPI_1_MISO	24
23	SPI_1_SCK	SPI_1_CS0	26
25	GND	SPI_1_CS1	28
27	I2C_1_SDA	I2C_1_SCL	30 GND
29	CAM_AF_EN	GND	32
33	CPIO_PZ0	LCD_BL_PWM	34 GND
35	CPIO_PZ6	GND	36
37	I2S_4_LRCK	UART 2_CTS	38
39	SPI_2_MOSI	I2S_4_SDIN	40
GND	GND	I2S_4_SDOUT	

BCM	W/P
2	1
4	2
6	3
8	4
10	5
12	6
14	7
16	8
18	9
20	10
22	11
24	12
26	13
28	14
30	15
32	16
34	17
36	18
38	19
40	20

Environment Sensor for Jetson Nano

Jetson Nano Interface