

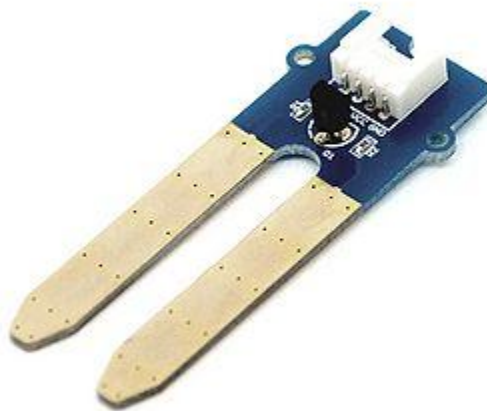
RB-See-186

Seedstudio Grove Moisture Sensor

Grove - Moisture Sensor

Introduction

This Moisture Sensor can be used to detect the moisture of soil or judge if there is water around the sensor, let the plants in your garden reach out for human help. They can be very to use, just insert it into the soil and then read it. with help of this sensor, it will be realizable to make the plant remind you : hey, i am thirsty now, please give me some water.



Features

- Easy to Use
- 2.0cmX6.0cm grove module
- feature3

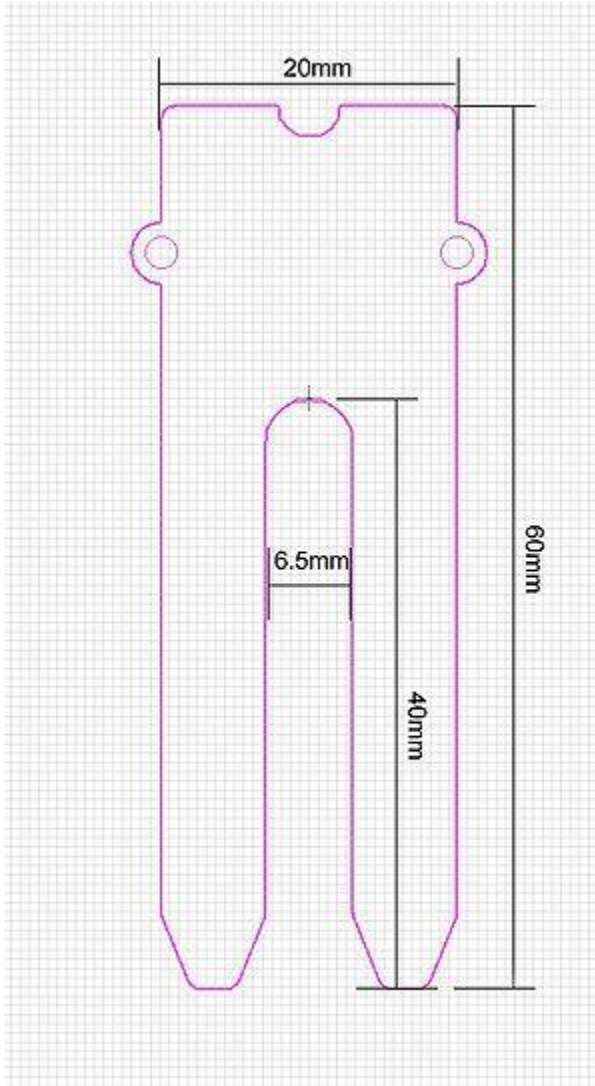
Specification

Item	Min	Typical	Max	Unit
Voltage	3.3	/	5	V
Current	0	/	35	mA

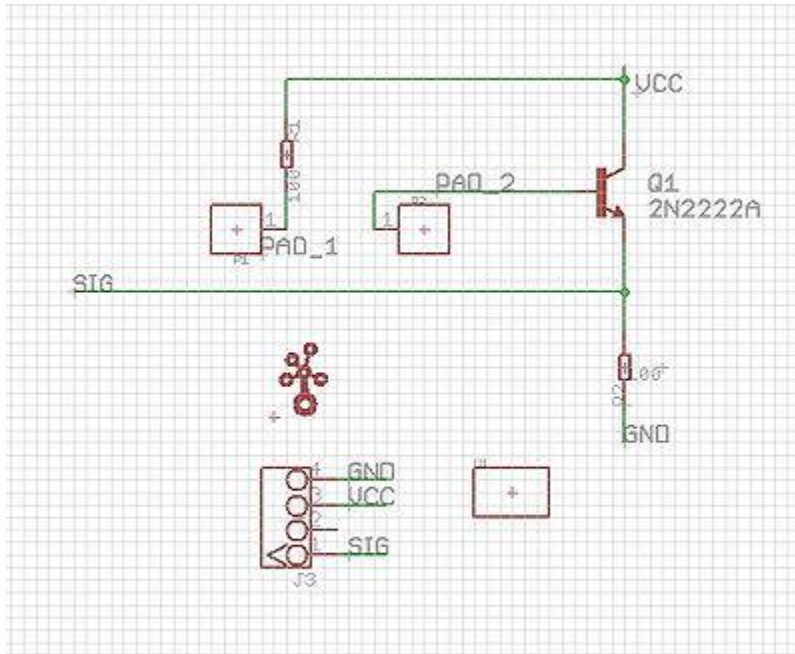
Application Ideas

- Botanical gardening
- Water sensor
- Application3

Mechanic Dimensions



Schematic



Usage

Hardware Installation

Connect this module to one of analog connectors (eg. A0&A1) of Grove - Base Shield with the 4 pin Grove cable, and then insert the Sensor into the soil or place it anywhere you want.

