

# RC4GS

THE ONLY 4CH PISTOL GRIP  
TRANSMITTER WITH GYRO INTEGRATED

400 METERS GROUND CONTROL DISTANCE



400M ground distance



4CH mix programmable



Gyro integrated



HV servo supported



USB upgrade



Menu in English



Fail safe self setting



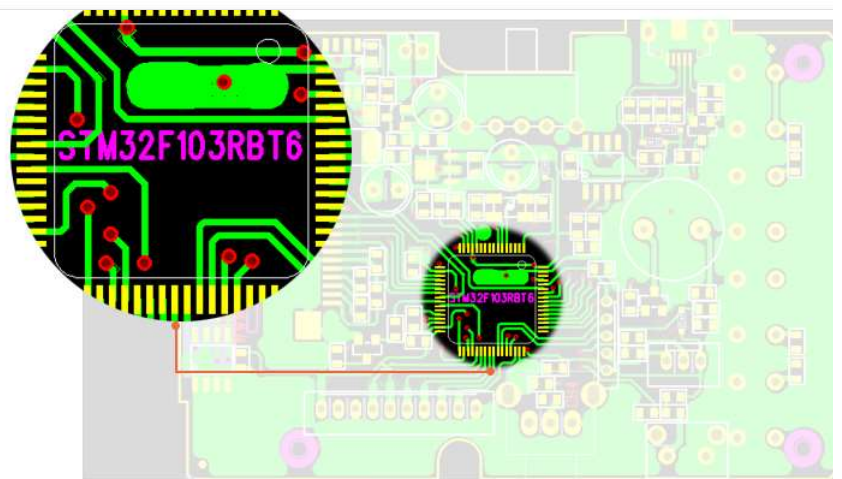
Parameter self setting

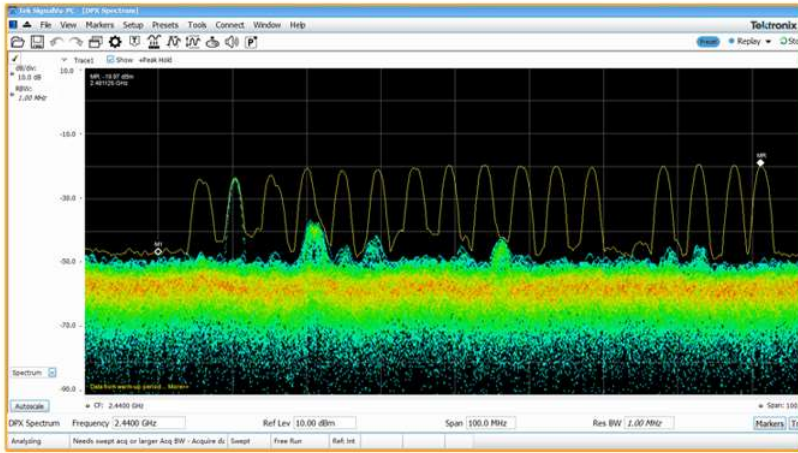


Antiplug protect

## Configuration Upgrade

- RC4GS, with transmitter chip STM32F103RB, the computing speed is much faster than RC3S and RC4G which with chip N572F072.
- The chip of R4FG/R4F is 32 bits industrial chip, is much better than the 8 bits chip which use for RC3S and RC4G. 12ms only from transmitter to the receiver, thus provide control synchronous and performance perfect.





## Communication Upgrade

With the same FHSS spread spectrum and 16 channels pseudo random frequency sequence hopping of AT9S makes RC4GS have superior anti-interference ability both at the same frequency band and different frequency bands. Ground control distance is up to 400 meters.

## Better Performance

Both transmitter and receiver use industrial chip ensure superior anti-sparks interference ability, random sensitivity of gyro will not interfere steering make RC4GS well controlled even oil tanker. Industrial grade anti-interference ability make sure multiplayer compete at the same time.



## Operating As You Want

Receiver with gyro integrated to hold the vehicle in a straight line during aggressive acceleration and braking or get bumped around by rough terrain.  
Receiver with gyro integrated to keep the uni-direction and anti-slip.



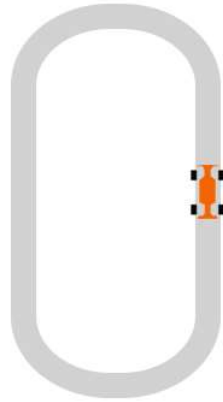
without GYRO



with GYRO



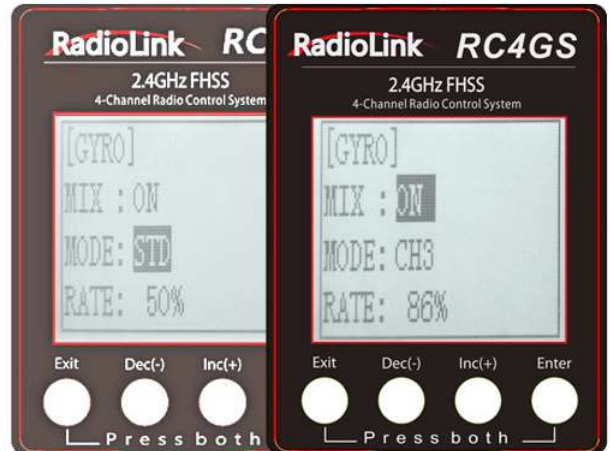
without GYRO



with GYRO

## Gyro Sensitivity Self-setting

Gyro sensitivity can be adjust by CH3 which default controlled by VR switch to maximize or minimize the functions of gyro.



## HV Servo Supported

Receiver R4FG/R4F support HV servo which up to 10V. R4FG/R4F also compatible with transmitters RC3S, RC4G and T8FB.

## USB Upgrade

Same as AT10II, upgrade firmware by an android USB cable helps RC4GS always keep the most advanced system and program.





### 4CH Mix Programmable

4 channels totally.  
Every two channels can be mix programmed.

### ABS Anti Lock Brake

ABS function keeps RC4GS will not slip if brake at corners thus avoiding out control.



battery box size : 97\*60\*25mm

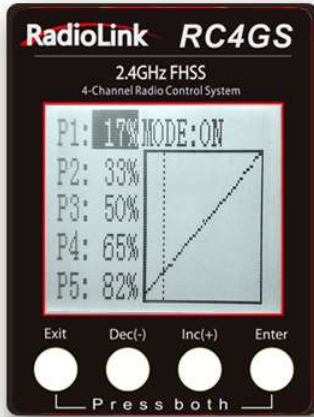
### Anti-polarity Connect Protection

RC4GS, with unique anti-polarity connect protection intelligent, will not damage transmitter or receiver even connect anti-polarity with a long time. Universal JST battery connector supports multiple batterie include 4pcs AA batteries or 2S-4S LiPo battery.

### Fail Safe Self-setting

Fail safe can be setup from CH1 to CH4 and fail safe parameters can be setup as you need.





### EPA (End Point Adjuster)

Correct the maximum steering angle for left and right steering angles when there is a difference in the turning radius due to the characteristics.

### THSPD (Throttle Speed)

Setting the throttle speed function reduces wasteful battery consumption while at the same time permitting smooth, enjoyable operation.

### D/R (Steering Dual Rate/ Throttle Dual Rate)

The steering left and right servo travels are adjusted simultaneously.

### THEXP (Throttle EXP)

Make the throttle high side and brake side direction servo operation quicker or milder.

### STEXP (Steering EXP)

Change the sensitivity of the steering servo around the neutral position. It has no effect on the maximum servo travel.

### STSPD (Steering Speed)

Quick steering operation will cause momentary understeering, loss of speed, or spinning. This function is effective in such cases.

### ACCEL (Throttle Acceleration) ATL (ATL Function)

Throttle acceleration simply "jumps" away from neutral and then leaves the remaining response linear.

### IDLUP (Idle-Up)

improve engine starting performance by raising the idling speed when starting the engine of a gasoline car (boat).

### REV (Servo Reverse)

Reverse the direction of operation of the servos related to transmitter steering, throttle, and channel 3/4 operation.

### A.B.S. (A.B.S. Function)

The generation of understeer can be eliminated and corners can be smoothly cleared by using this function.

Decrease the set value when the braking effect is strong and increase the set value when the brake effect is weak.



## Specification

- Size: RC4GS - 213\*117\*115.5mm, R4FG/R4F - 35\*20\*13mm
- Channel: 4 Model: cars, boats
- Modulation mode: GFSK
- Spread spectrum: FHSS 16 channels pseudo random frequency sequence hopping
- 10 modes memory storage
- Antenna length: 106mm
- Control distance: more than 400 meters ground
- LCD screen: 128\*64 resolution, LCD back light
- Transmitter operating voltage: 4.8~15.0V DC, 4\*1.5AA or 2S-4S Lithium battery
- Transmitter operating current: 80~120mA
- Receiver operating voltage: 3.3~10V
- Receiver operating current: 30mA
- RF power: <20dbm
- Low voltage alert: Yes (lower than 4.6V), can be set when using 2S-4S Li-Po battery
- Frequency: 2.4GHz ISM band(2400MHz~2483.5MHz)
- Channel resolution: 4096, the regular jitter is 0.5us
- Receiver: R4FG(sells with), R4F, R8EF, R8FM