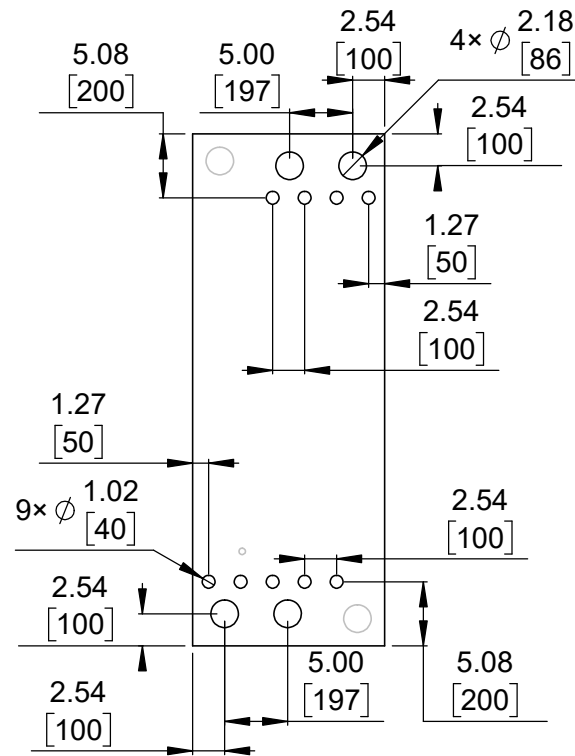
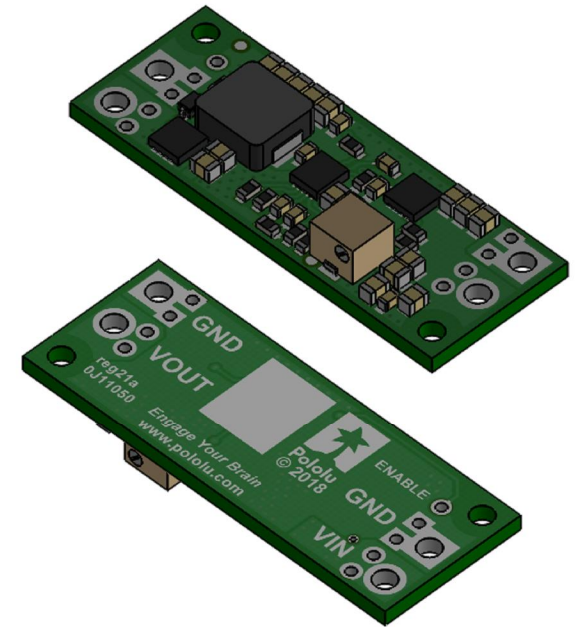


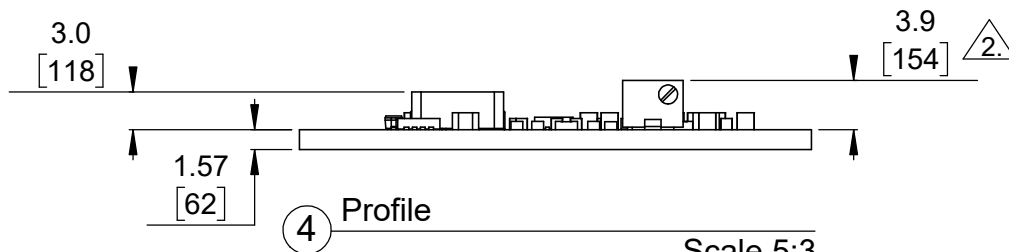
① Board dimensions (top view)  
Scale 5:3



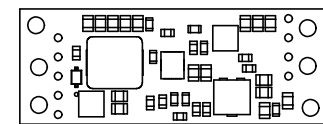
② Connector callouts (bottom view)  
Scale 5:3



③ Isometric view  
Scale 5:3



④ Profile  
Scale 5:3



⑤ Actual size  
Scale 1:1

①. Intended for #2 and M2 screws.

②. This diagram is applicable to some products that do not include the trimmer potentiometer.


3. Trimmer adjustment slot is 1.5 [60] × 0.6 [22].

4. To get the specified scale, select 100% in print settings.

5. Drill location tolerance: ±0.1 [±5].

6. Board edge tolerance: ±0.3 [±10].

<https://www.pololu.com/category/243>

Name: Step-Up Voltage Regulator U3V70x		Item number: 2890-2896
Drawing date: 13 August 2018	Dev code: reg21a	 <b>Pololu</b> Robotics & Electronics © 2018 Pololu Corporation
Units: mm [mil]	Material: mixed	