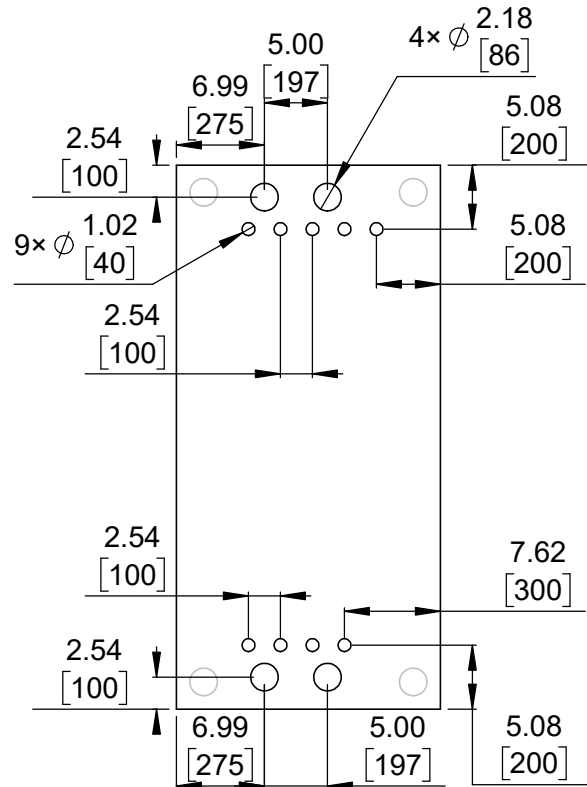
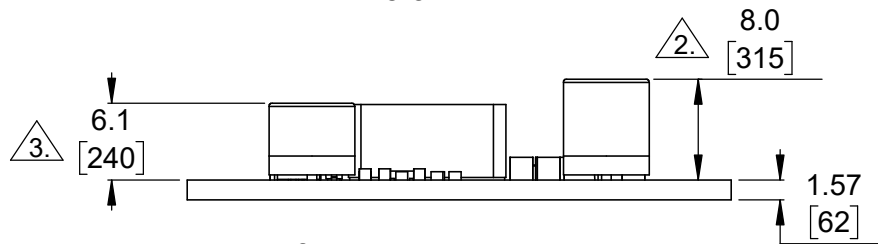


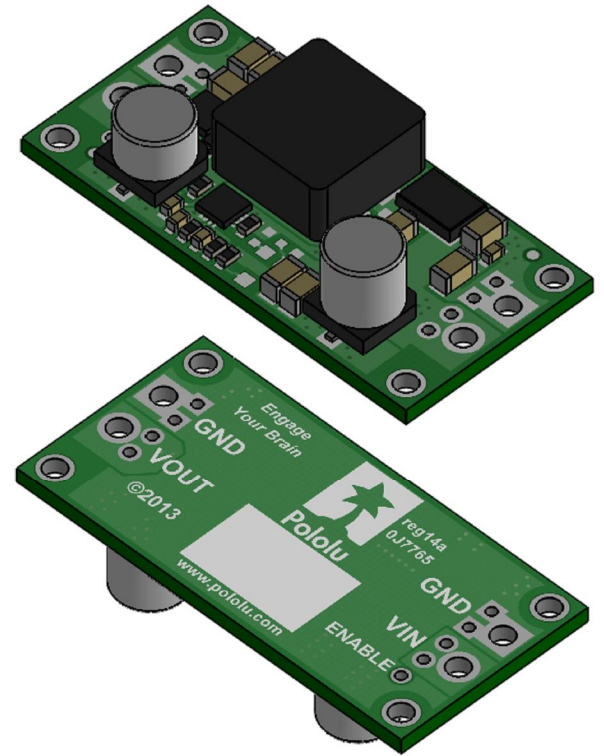
1 Board dimensions (top view)
Scale 5:3



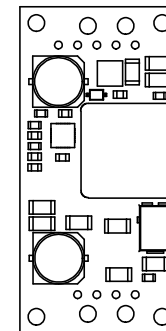
2 Connector callouts (bottom view)
Scale 5:3



4 Profile
Scale 5:3



3 Isometric view
Scale 5:3



5 Actual size
Scale 1:1

1. Intended for #2-56 screws.

2. Height of capacitor above the board is 6.1 mm [240 mil] for S18V20AHV Adjustable 9-30V Regulators manufactured after December 2014.


3. Height of capacitor above the board is 8.0 mm [315 mil] for boards manufactured prior to December 2014.

4. To get the specified scale, select 100% in print settings.

5. Drill location tolerance: ± 0.1 [± 5].

6. Board edge tolerance: ± 0.3 [± 10].

<https://www.pololu.com/product/2572>

Name: Pololu Step-Up/Step-Down Voltage Regulators S18V20x		Item number: 2572-2577
Drawing date: 4 January 2018	Dev code: reg14a	 Pololu Robotics & Electronics © 2018 Pololu Corporation
Units: mm [mil]	Material: mixed	