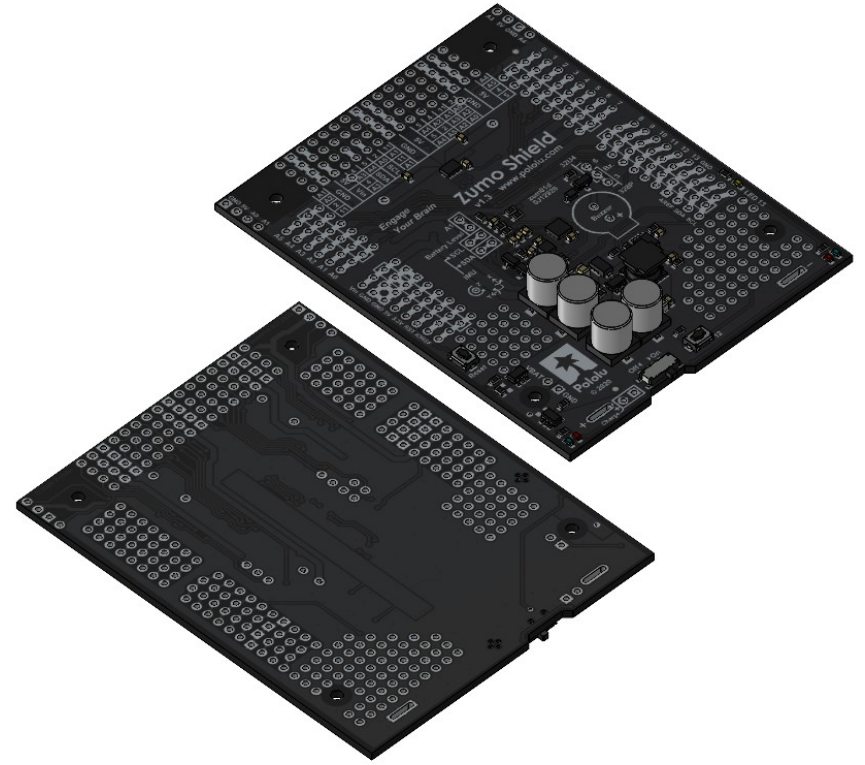
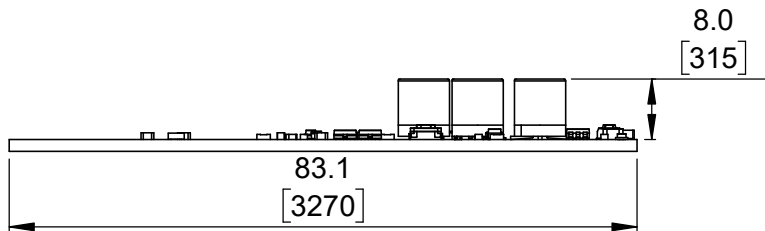


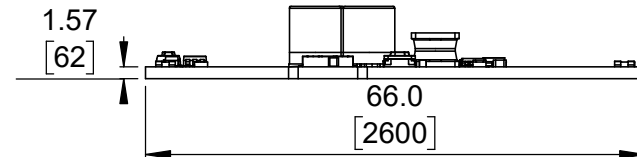
1 Top view (actual size)
Scale 1:1



2 Isometric view
Scale 4:5




3 Long profile
Scale 1:1

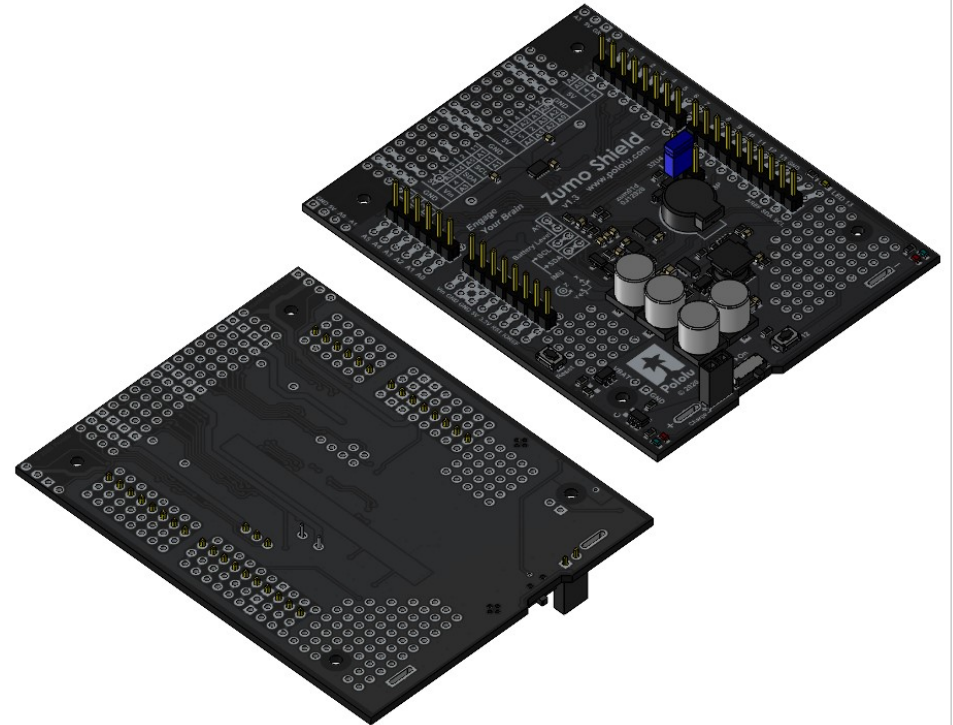
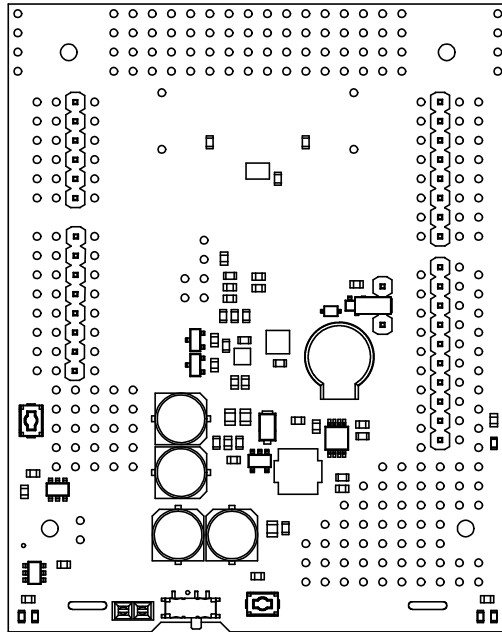


4 Short profile
Scale 1:1

1. To get the specified scale, select 100% in print settings.
2. Drill location tolerance: ± 0.1 [± 5].
3. Board edge tolerance: ± 0.3 [± 10].

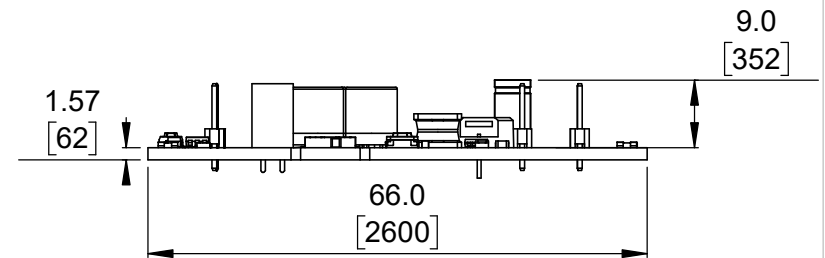
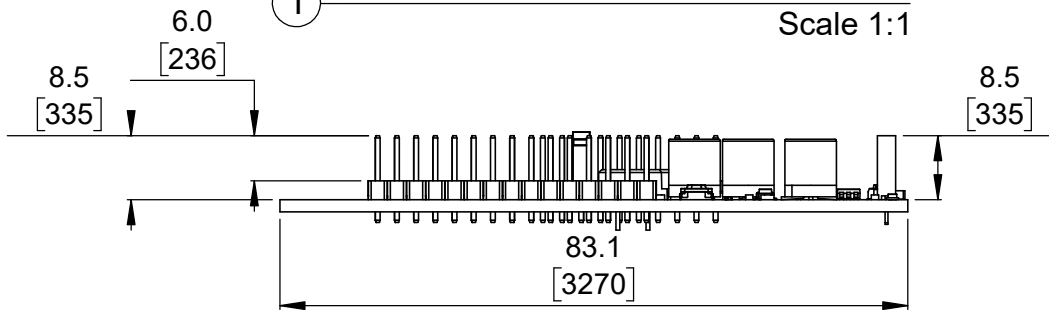
<https://www.pololu.com/product/2521>

Name: Zumo Shield for Arduino v1.3		Item number: 2521
Drawing date: 10 September 2020	Dev code: zum01d	 © 2020 Pololu Corporation
Units: mm [mil]	Material: mixed	



① Top view (actual size)
(with included through-hole components)
Scale 1:1

② Isometric views
(with included through-hole components)
Scale 4:5




③ Long profile
(with included through-hole components)
Scale 1:1

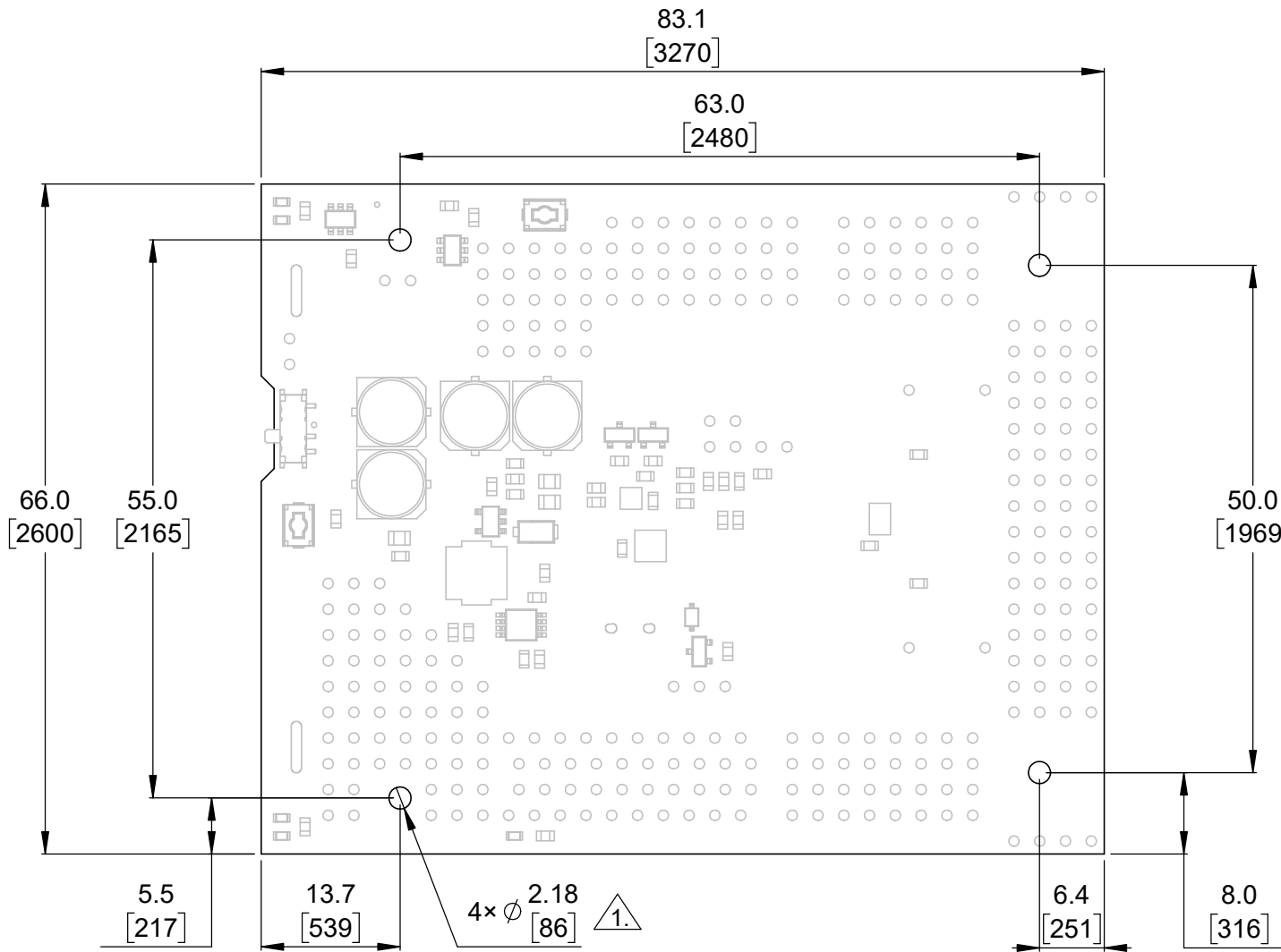
④ Short profile
(with included through-hole components)
Scale 1:1

1. To get the specified scale, select 100% in print settings.
2. Drill location tolerance: ± 0.1 [± 5].
3. Board edge tolerance: ± 0.3 [± 10].

<https://www.pololu.com/product/2521>

Name: Zumo Shield for Arduino v1.3		Item number: 2521
Drawing date: 10 September 2020	Dev code: zum01d	 © 2020 Pololu Corporation
Units: mm [mil]	Material: mixed	

Board dimensions (top view)




1.

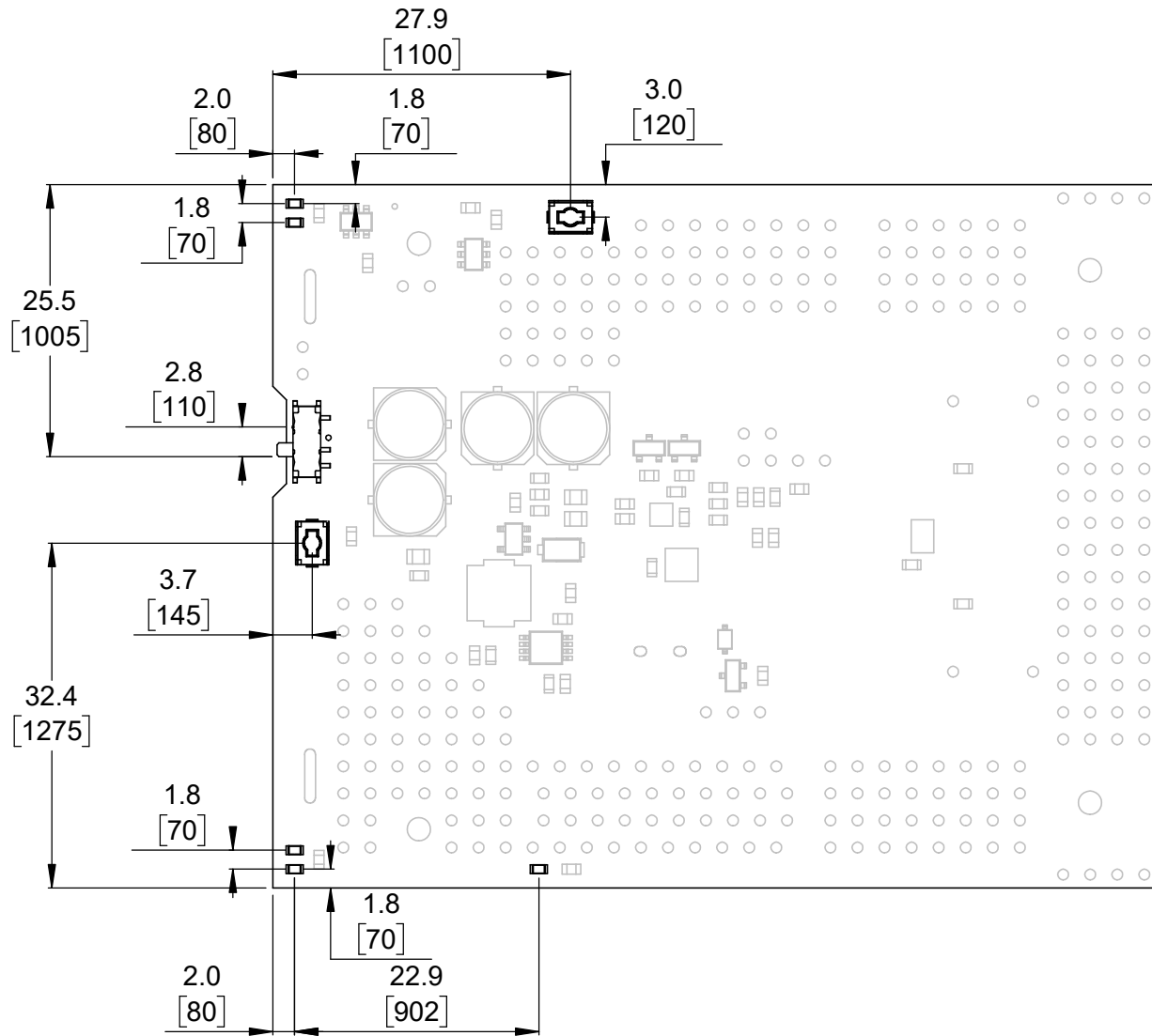
- 1. Intended for #2 and M2 screws.
- 2. To get the specified scale, select 100% in print settings.
- 3. Drill location tolerance: ± 0.1 [± 5].
- 4. Board edge tolerance: ± 0.3 [± 10].

Scale 3:2

<https://www.pololu.com/product/2521>

Name: Zumo Shield for Arduino v1.3		Item number: 2521
Drawing date: 10 September 2020	Dev code: zum01d	 © 2020 Pololu Corporation
Units: mm [mil]	Material: mixed	


User interface elements (top view)



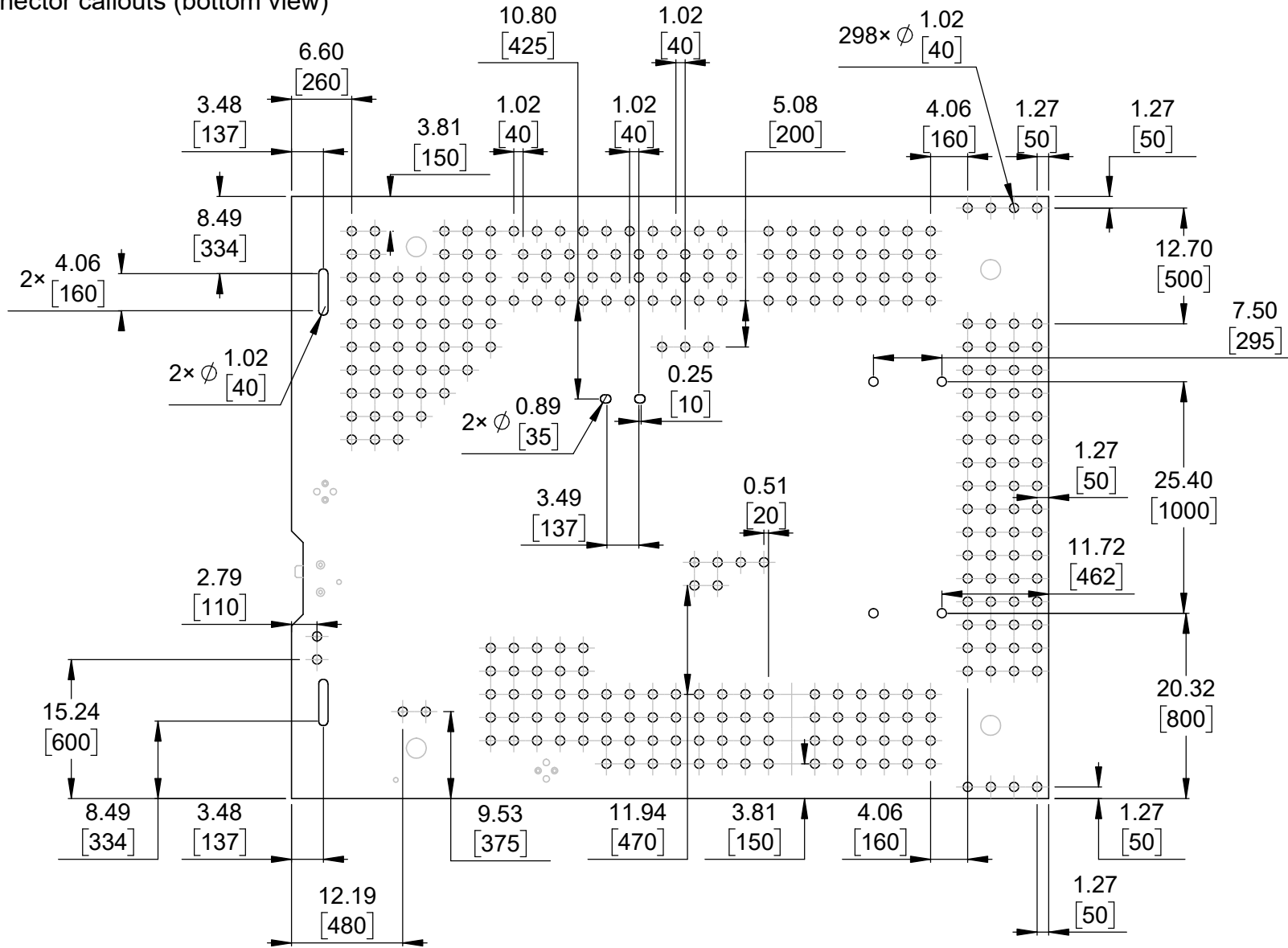
1. To get the specified scale, select 100% in print settings.
2. Drill location tolerance: ± 0.1 [± 5].
3. Board edge tolerance: ± 0.3 [± 10].

Scale 3:2

<https://www.pololu.com/product/2521>

Name: Zumo Shield for Arduino v1.3		Item number: 2521
Drawing date: 10 September 2020	Dev code: zum01d	 Pololu Robotics & Electronics © 2020 Pololu Corporation
Units: mm [mil]	Material: mixed	


Connector callouts (bottom view)



1. Grid lines indicate 2.54mm [100 mil] spacing.
2. To get the specified scale, select 100% in print settings.
3. Drill location tolerance: ± 0.1 [± 5].
4. Board edge tolerance: ± 0.3 [± 10].

Scale 3:2

<https://www.pololu.com/product/2521>

Name: Zumo Shield for Arduino v1.3		Item number: 2521
Drawing date: 10 September 2020	Dev code: zum01d	 Pololu Robotics & Electronics © 2020 Pololu Corporation
Units: mm [mil]	Material: mixed	