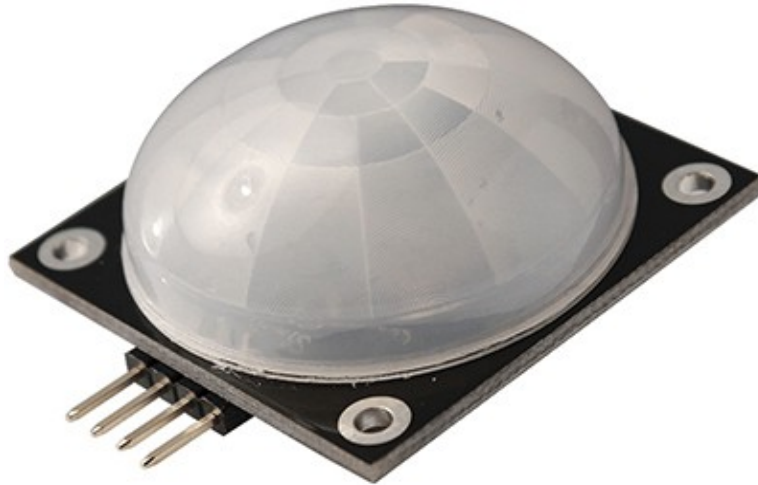


RB-PIx-293

Wide Angle PIR Motion Sensor



The Wide Angle PIR Sensor features a larger detection angle of 180°. This makes it ideal in applications where users need to track movements across a large, open area. The Wide Angle PIR Sensor is a pyroelectric device, and it detects motion by sensing changes in the infrared levels emitted by surrounding objects. When motion is detected, the Wide Angle PIR Sensor outputs a high signal on its output pin.

Features

- Single bit output
- Small size and mounting holes for easy concealment
- On-board LEDs
- Power 3V to 6VDC operation 150uA idle, 3mA active(no load) current draw
- 30mA active(0 ohm resistor) high current draw
- Detects movement up to 30 ft away
- 180° detection angle for widespread motion detection
- Adjustable sensitivity to tune for different operating conditions
- User-selectable "night-time mode" for detecting motion in decreased lighting conditions
- 4-pin SIP package perfect for breadboard-friendly projects

Specifications

- Voltage requirements: 3.0 to 6.0 VDC
- Current requirements: 150 uA idle, 3 mA active (no load)
- Communication: Single-bit high/low output
- Dimensions: 1.42 x 1.42 x 0.79 in (36.0 x 36.0 x 20.2 mm)
- Operating temperature range: 32 to 122 °F (0 to 50 °C)

Applications

- Security Alarm
- Motion-activated nightlight
- Holiday animated props