

Getting Started

Welcome to the VCP1100 user guide! In order to get started, make sure you have the following hardware on hand:

- [VCP1100 - 30A Current Phidget](#)
- [VINT Hub](#)
- [Phidget cable](#)
- USB cable and computer
- something to use with the VCP1100 (e.g. a circuit with flowing current to measure)

Next, you will need to connect the pieces:



1. Connect the VCP1100 to the VINT Hub using the Phidget cable.
2. Connect the current source to the terminals of the Current Phidget, with the current flowing into the minus terminal and out the plus terminal.
3. Connect the VINT Hub to your computer with a USB cable.

Now that you have everything together, let's start using the VCP1100!

Using the VCP1100

Phidget Control Panel

In order to demonstrate the functionality of the VCP1100, the Phidget Control Panel running on a Windows machine will be used.

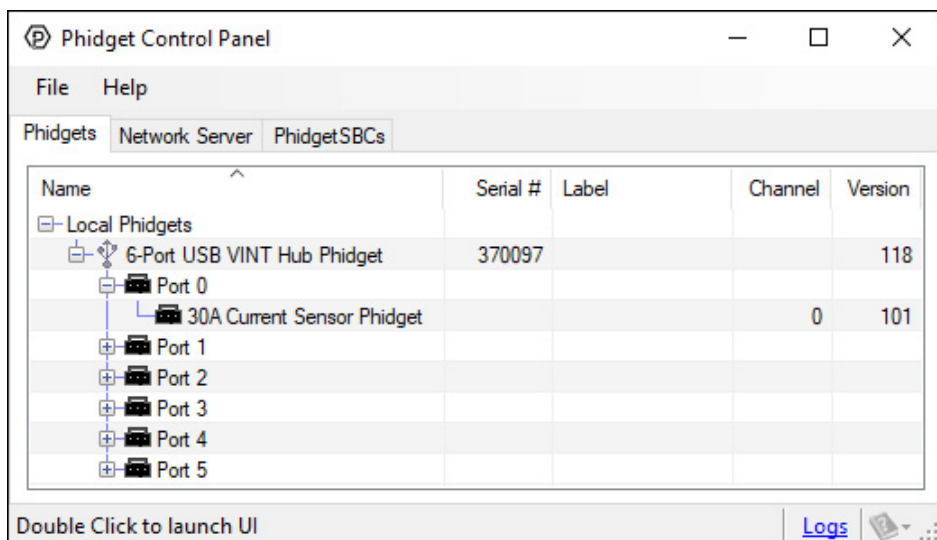
The Phidget Control Panel is available for use on both macOS and Windows machines. If you would like to follow along, first take a look at the getting started guide for your operating system:

- [Getting started with Windows](#)
- [Getting started with macOS](#)

Linux users can follow the [getting started with Linux](#) guide and continue reading here for more information about the VCP1100.

First Look

After plugging the VCP1100 into your computer and opening the Phidget Control Panel, you will see something like this:



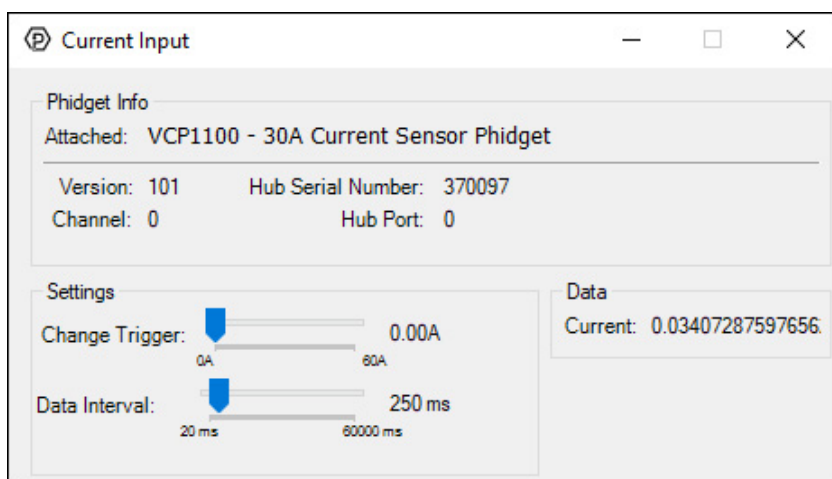
The Phidget Control Panel will list all connected Phidgets and associated objects, as well as the following information:

- Serial number: allows you to differentiate between similar Phidgets.
- Channel: allows you to differentiate between similar objects on a Phidget.
- Version number: corresponds to the firmware version your Phidget is running. If your Phidget is listed in red, your firmware is out of date. Update the firmware by double-clicking the entry.

The Phidget Control Panel can also be used to test your device. Double-clicking on an object will open an example.

Current Input

Double-click on the Current Input object in order to run the example:



General information about the selected object will be displayed at the top of the window. You can also experiment with the following functionality:

- Modify the change trigger and/or data interval value by dragging the sliders. For more information on these settings, see the [data interval/change trigger](#) page.

Technical Details

Isolation

The VCP1100 is electrically isolated, so a power surge in the circuit you're measuring would only damage the VCP1100- it won't damage your VINT Hub or your computer unless it exceeds the board's isolation voltage (50V) . Having isolation also helps prevent the formation of [ground loops](#) in your system.

What to do Next

- [Software Overview](#) - Find your preferred programming language here to learn how to write your own code with Phidgets!
- [General Phidget Programming](#) - Read this general guide to the various aspects of programming with Phidgets. Learn how to log data into a spreadsheet, use Phidgets over the network, and much more.
- [Phidget22 API](#) - The API is a universal library of all functions and definitions for programming with Phidgets. Just select your language and device and it'll give you a complete list of all properties, methods, events, and enumerations that are at your disposal.