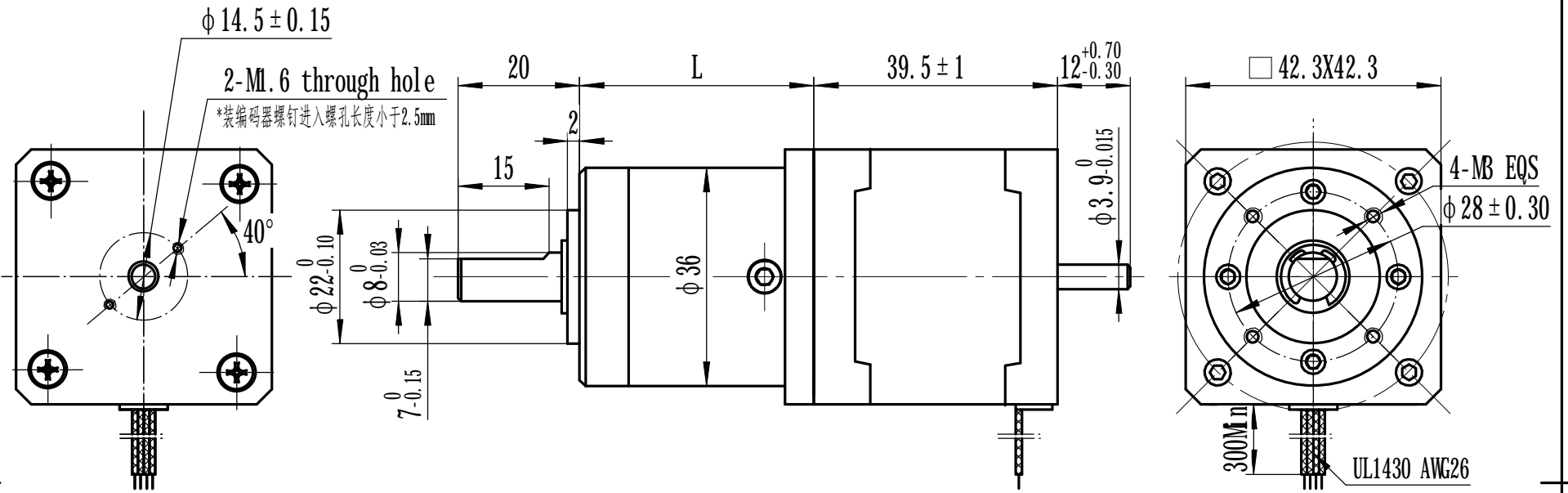


ODZ.242.001



Gear Box Specifications:

Gear Ratio	1:5.18	1:14	1:27	1:51	1:100
Number of gear trains	1	2	3		
Rated torque(kg.cm)	18	30	48		
Max. permissible load in a short time(kg.cm)	45	80	100		
Length (L) mm	31	38.5	48.2		

Stepper Motor Specifications:

MODEL	Phase	Step Angle	Rated Voltage	Current /Phase	Resistance /Phase	Inductance /Phase	Holding Torque	Rotor Inertia
	Deg/Step	V	A	Ω	mH	Kg.cm	$g.cm^2$	
42STH38-1684B	2	1.8	2.8	1.68	1.65	3.2	3.6	57

							DONGZHENG MOTOR		
							36JXSG06/42STH38-1684B		
REV.	QTY.	No.	SIG.	DATE			CLS. MAK	QTY	SCALE
DESIGN	Zhu Guanghua		STD.				S		1:1
CHECK							PAGE		OF
PROC.			APPR.						
									ODZ.242.001
									REV