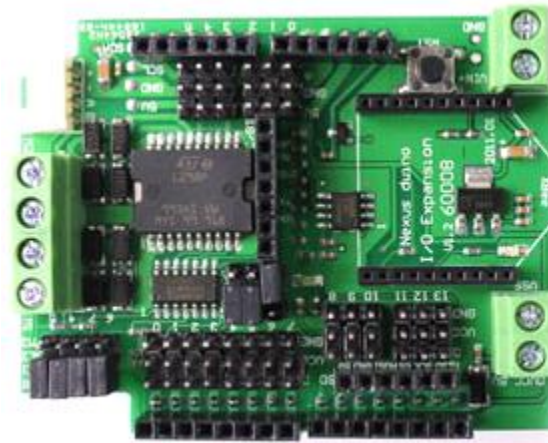


## Arduino IO Expansion



### Descriptions

The 4WD Omni-Directional Arduino Compatible Mobile Robot Kit includes the Arduino IO Expansion V1.2 and gives you extra ease to connect device such as sensors, servo and RS485 device.

This sensor expansion board is able to easily connect a number of commonly used sensors.

### Features

- 14 steering gear interface
- 8 analog IO port and power
- 6 PWM interface
- 1 servo external power supply terminal
- 5 External power supply input pin
- RS485 interface
- Reset button
- Wireless data-transmission interface

### Specifications

- Microcontroller: Arduino IO Expansion V1.2
- Module power supply: +5 V
- Servo power supply: +5 V
- Module size: 53 x 70mm
- Weight: 33.5g

### Compatibility

- Arduino Mega
- Arduino Duemilanove (168 and 328)

- Arduino Diecimila
- Arduino I/O
- Arduino LCD
- Arduino Motor
- Arduino Ethernet