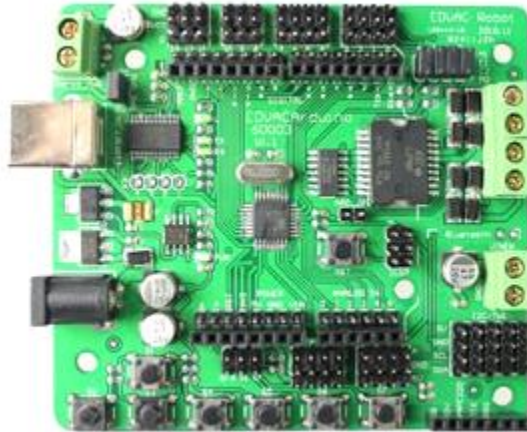


Arduino 328 microcontroller board



Descriptions

The 3WD Compact Omni-Directional Arduino Compatible Mobile Robot Kit includes a microcontroller board based on the Arduino 168. It has 14 digital input/output pins (of which 6 can be used as PWM outputs), 8 analog inputs, a 16 MHz crystal oscillator, a USB connection, a power jack, an ICSP header, and a reset button. It contains everything needed to support the microcontroller; simply connect it to a computer with a USB cable or power it with a AC-to-DC adapter or battery to get started.

Specifications

- Microcontroller: ATmega168
- Operating Voltage: 5V
- Input Voltage (recommended): 7-12V
- Input Voltage (limits): 6-20V
- Digital I/O Pins: 14 (of which 6 provide PWM output)
- Analog Input Pins: 8
- DC Current per I/O Pin: 40 mA
- DC Current for 3.3V Pin: 50 mA
- Flash Memory 32 KB of which 2KB used by bootloader
- SRAM: 1KB(ATmega168) or 2KB(ATmega328)
- EEPROM:512bytes(ATmega168) or 1KB(ATmega328)
- Clock Speed: 16 MHz

Compatible with

- Arduino Duemilanove Prototype Shield
- Arduino I/O Shield
- Arduino LCD Shield
- Arduino Motor Shield

- Arduino Ethernet Shield