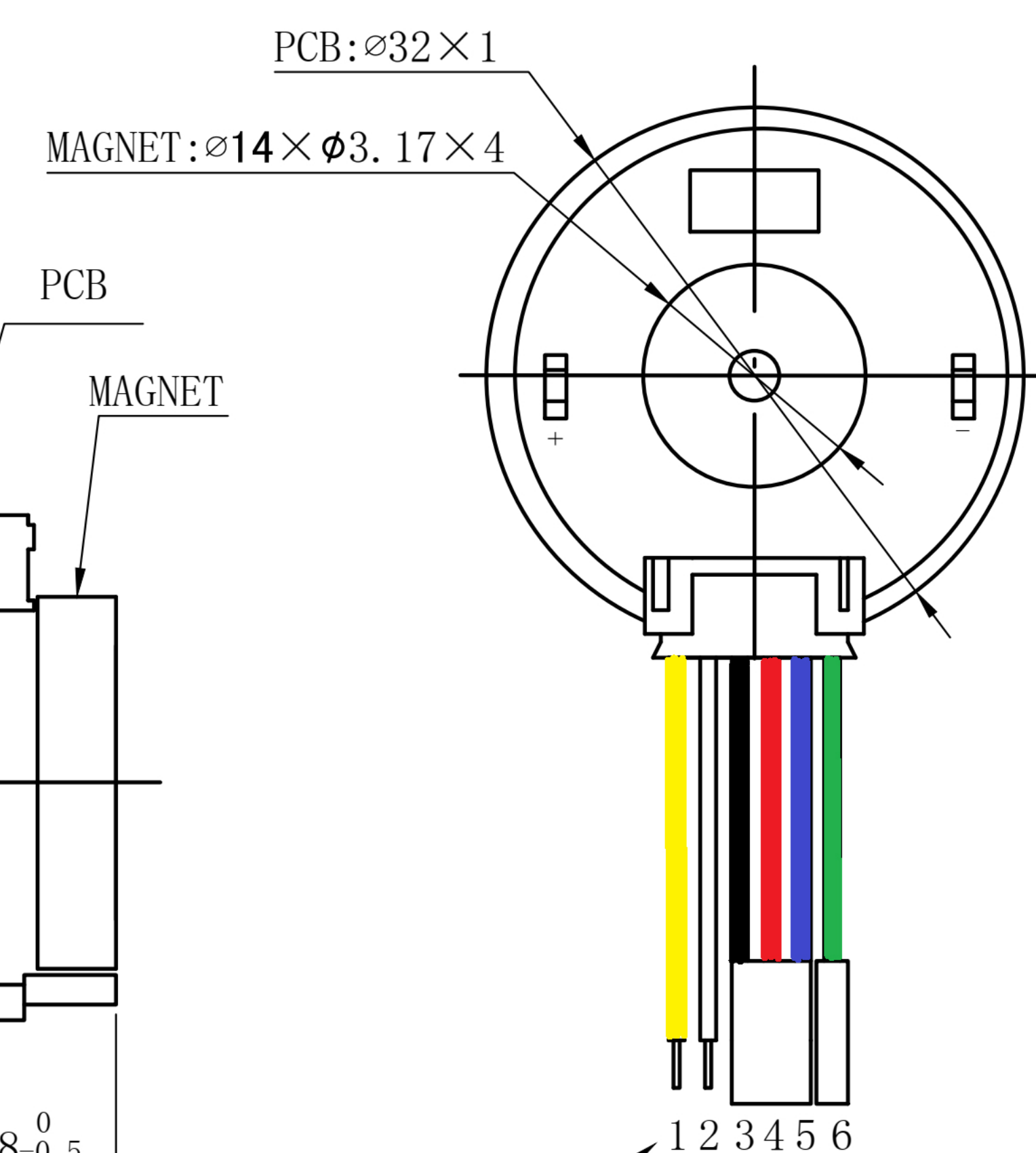
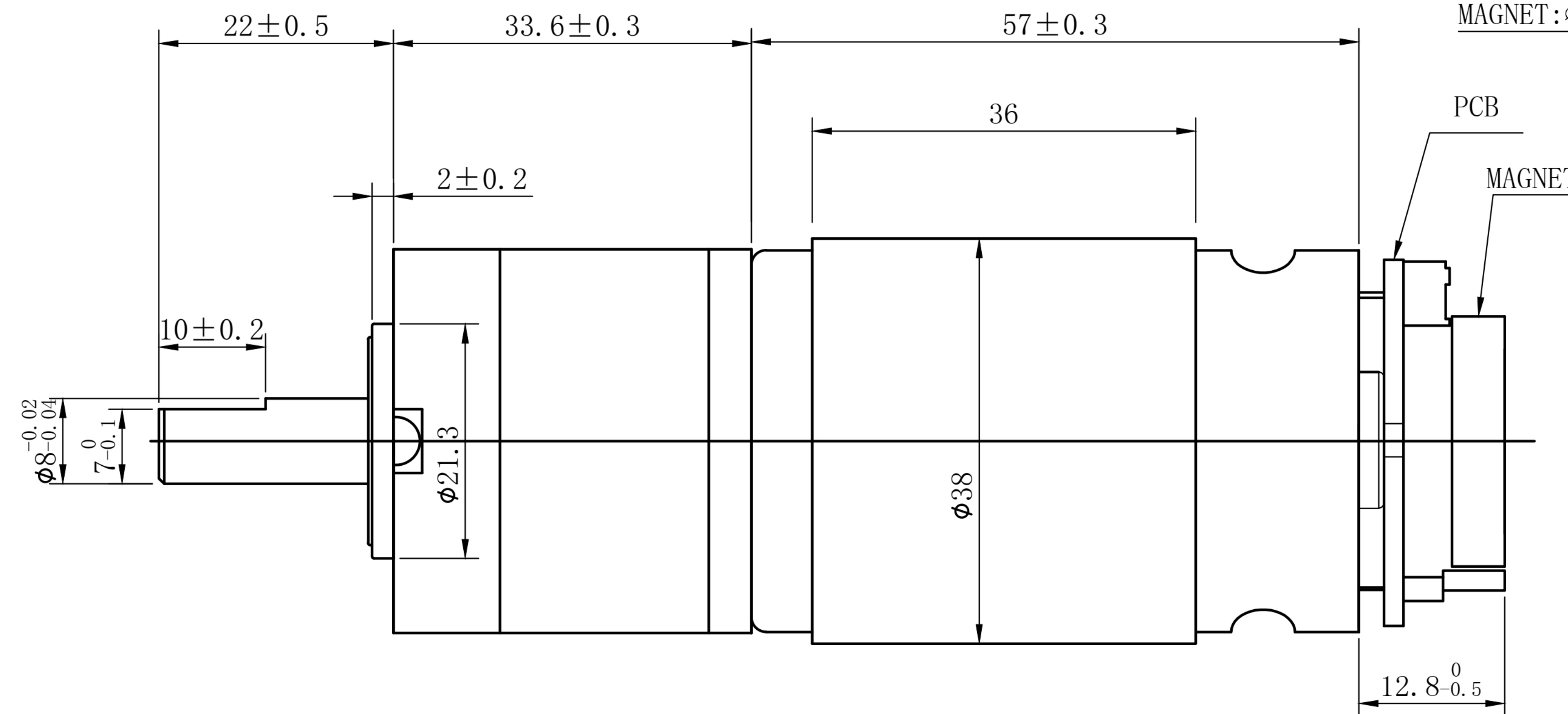
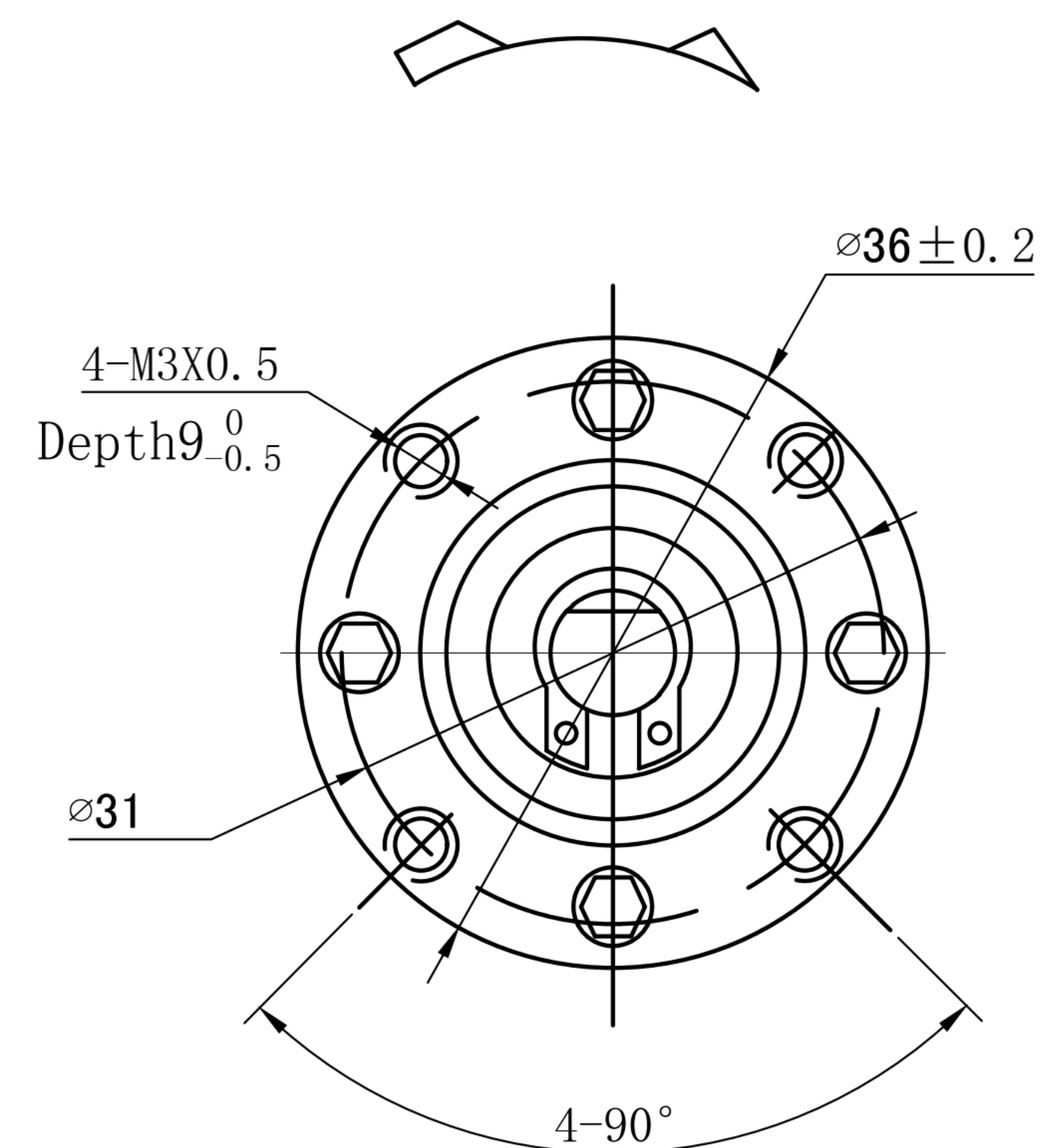


DIRECTION OF ROTATION



SPECIFICATIONS

For reference only

| | |
|--------------------|----------------|
| MODEL | 36GP-555-27-EN |
| VOLTAGE | 12V |
| AT NO LOAD | |
| SPEED | 170rpm±10% |
| CURRENT | ≤0.3A |
| AT RATED TORQUE | |
| SPEED | 140rpm±10% |
| CURRENT | ≤1.45A |
| TORQUE | 5.5Kg.cm |
| PERMIT TORQUE | 25kgcm |
| CURRENT | ≤6.5A |
| TOTAL GEAR RATIO | 1:27 |
| ALL ALLOWED OR NOT | NO |

Encoder parameter

1. Voltage: 5V
2. Signals: Square wave AB 90°
3. Temperature: -20°C-80°C
4. Pulse: 12PPR
5. Frequency: 800KHz

Remarks

Wire length: 300 ± 20 mm

Motor Wire Gauge: 26#

Hall Wire Gauge: 26#

Terminal model: PH2.54- 3P+1P

Wiring sequence

1. Yellow Motor +

2. White Motor -

3.Black Hall Sensor GND

4. Red Hall Sensor VCC

5.Blue Hall Sensor A Vout

6.Green Hall Sensor B Vout

The final specifications depend on the test result of samples.