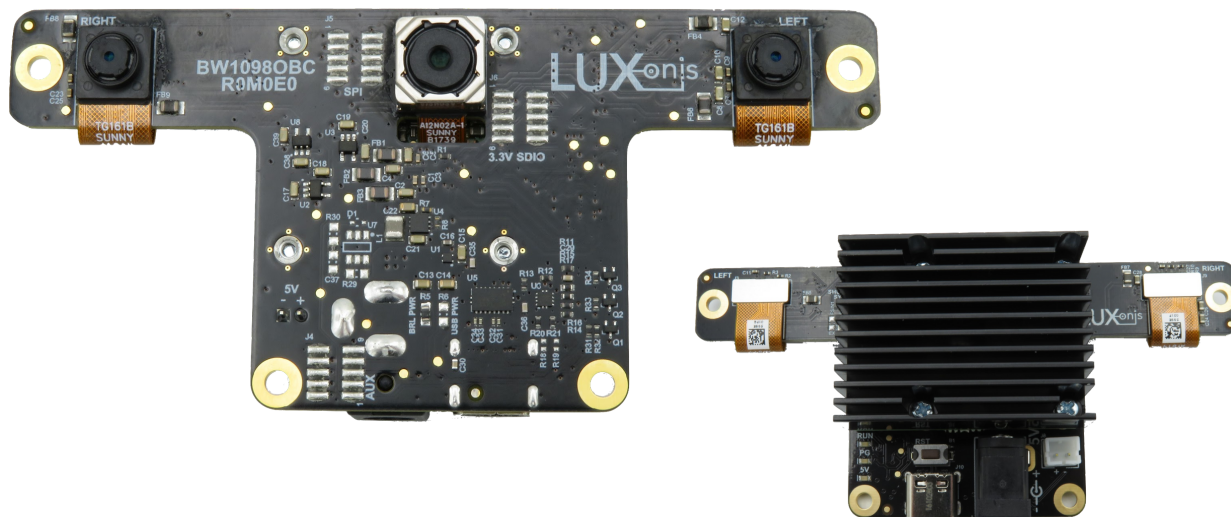


# **DEPTH**<sub>ai</sub>

USB3 | LINUX, MAC OS, WINDOWS



## MULTI-PLATFORM DEPTHAI

### USB3 Interface with Onboard Cameras

This USB3 variant of DepthAI allows the power of the Myriad X VPU to be fully harnessed and used with the platform of your choice. Onboard cameras with 7.5cm stereo depth allow quick setup.

DepthAI can be used with your favorite operating system and platform, including the Jetson Nano, Google Edge TPU Coral, and popular Raspberry Pi competitors (and the Raspberry Pi itself).

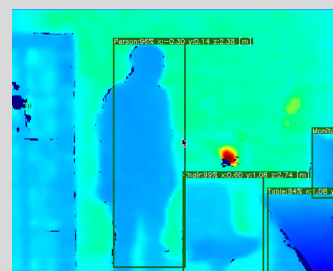
DepthAI is compatible with any operating system that supports OpenVINO, including:

- Linux: Ubuntu - Yocto Project - CentOS - Raspbian
- Mac OS X
- Windows 10

DepthAI can also be customized to run with non-OS micro-controllers or even host-free (e.g. direct peripheral drive). Contact [support@luxonis.com](mailto:support@luxonis.com) for no-host or non-OS host customization.

## REAL-TIME SPATIAL AI

Embedded object  
detection and  
localization in 3D  
space

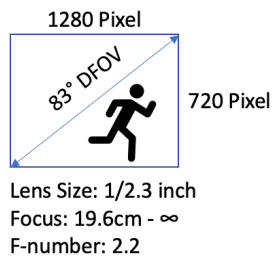


# DEPTH<sub>ai</sub>

## RASPBERRY PI HAT

### HARDWARE FEATURES

Onboard Cameras:  
- 2x 720P, 120Hz global shutter mono camera for high-quality, high-speed 3D perception



- 1x 12MP, 4K, 60Hz color camera for excellent color representation and digital zoom

