



CONNECT UPGRADE KIT INSTALLATION GUIDE

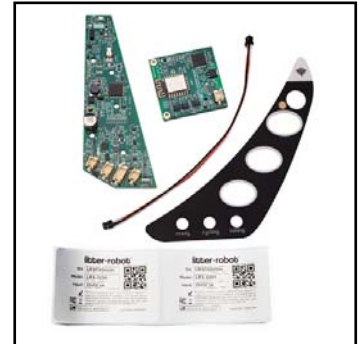
You will need:

- #2 Phillips screwdriver
- Optional:*
- Needle-nose pliers
- Utility knife



Upgrade Kit includes:

- Main Circuit Board
- WebConnect Module
- Wire Harness
- Applique
- Serial Number Stickers
- Connect Quick Start Guide



DISASSEMBLE YOUR LITTER-ROBOT

1. Press the Power button to turn the unit off and unplug it from the wall. Remove the Bonnet, Globe, and Waste Drawer.
2. The plastic component that covers the Control Panel on the Base is called the Bezel. Unscrew the 5 screws to remove the Bezel.

Installation video at litter-robot.com/upgradekitinstall



3. Lift the Bezel out of place; if needed, use needle-nose pliers for assistance.

4. Separate the Bezel from the Control Panel by pushing the buttons through and lifting up. Set the Bezel and screws aside.

Note: The Circuit Board and Keypad may be held in place by a piece of tape (assembly aid). If present, simply remove it; it is not required for reassembly.



REMOVE THE CIRCUIT BOARD

5. Turn the Circuit Board over and unplug the three connectors: 4-pin (DFI - Drawer Full Indicator), 6-pin (Motor and power), and the 8-pin (Hall Effect sensor).

Make sure to pull the connector from the base of the wire.

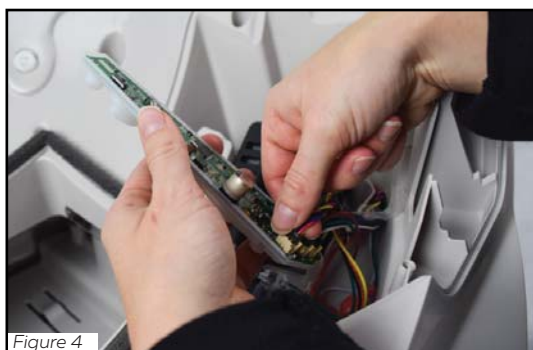


Figure 4



Figure 5

6. Peel the Keypad away from the Circuit Board for reuse.

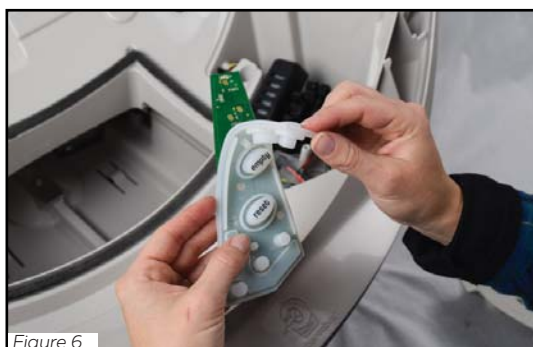


Figure 6

INSTALL THE NEW CIRCUIT BOARD

7. Attach the Keypad to the new Circuit Board by sliding the long edge of the Circuit Board under the rubber lip, then working your way around the perimeter until the Keypad frames the Circuit Board.

Note: If you think you may have confused the new Circuit Board for Connect with the original one, see Figure 30 on Page 8.

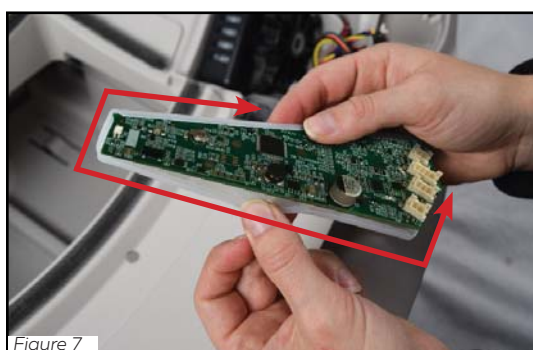


Figure 7

8. From the front of the Keypad, press the three connection points through the holes on the Circuit Board to secure them together (see Figure 8b).

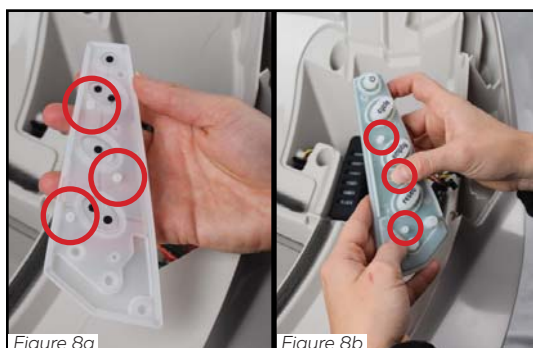


Figure 8a

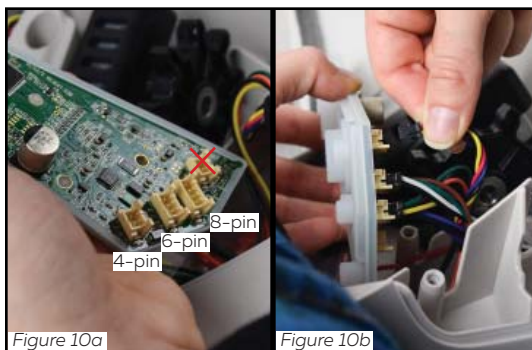
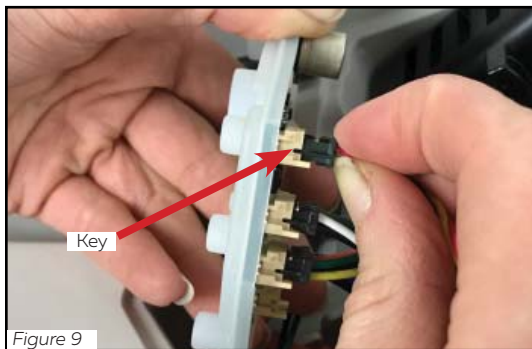
Figure 8b

9. Reattach the three wire connectors to the Circuit Board.

Each connector is keyed (there is a top and bottom), so it will only fit on the header one way (see Figure 9). If you feel resistance, turn it over and try again.

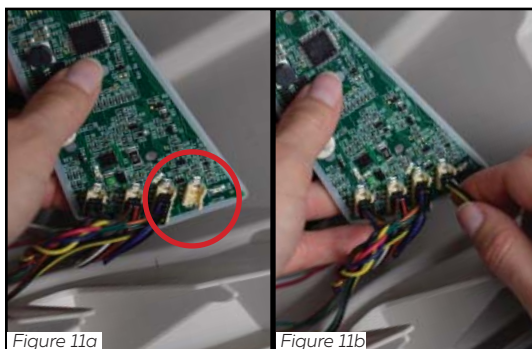
The 4-pin connector goes on the 4-pin header, the 6-pin connector goes on the 6-pin header, and the 8-pin connector goes on the 8-pin header as shown in Figure 10a.

Note: The 4-pin header to the right of the 8-pin header is used in the next step.

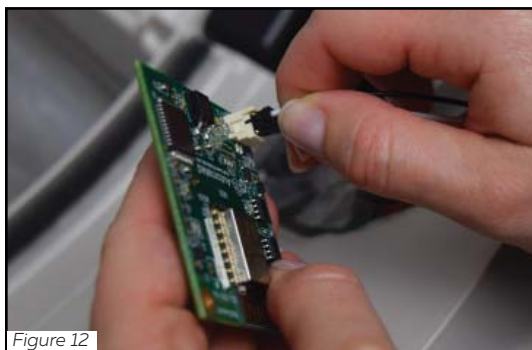


INSTALL THE WEBCONNECT MODULE

10. On the Circuit Board, connect the new wire harness to the unused 4-pin header (see Figure 11a).



11. Connect the other end of the wire harness to the 4-pin header on the WebConnect module.

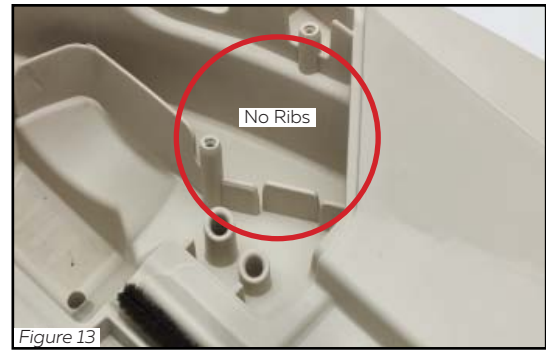


12. Depending on your Base, install the WebConnect module using one of the following methods:

A. WITHOUT RIBS (see Figure 13):

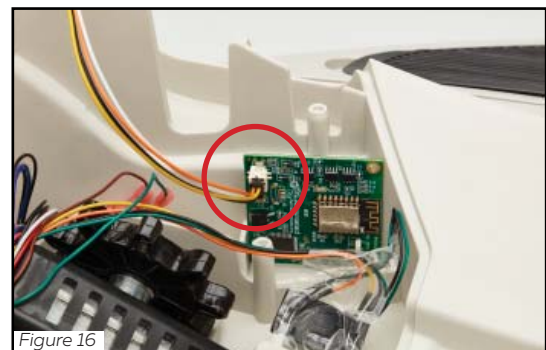
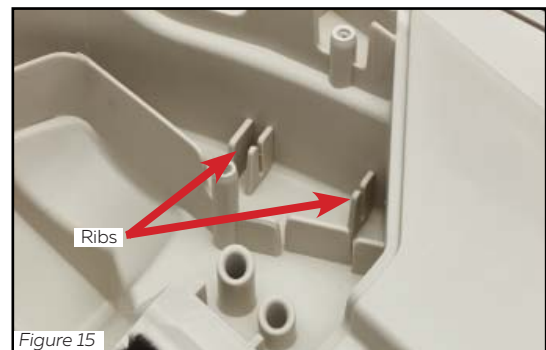
If your Base does not have ribs, affix the module to the front wall of the Base with the foam tape provided (see Figure 14a).

Peel off the backing of the tape, orient the module so the wire connector is at the top, and press it against the front wall of the Base as shown in Figure 14b.



B. WITH RIBS (see Figure 15):

If your Base has ribs, slide the module into the ribs; orient the module so the wire connector is at the top (see Figure 16).



13. Tuck the WebConnect wire harness down into the wire channel.



14. Make sure the wires attached to the Circuit Board are tucked behind it in the wire channel (see Figure 19).



REATTACH THE BEZEL

15. Reassemble the Bezel onto the Circuit Board and Keypad by holding the Circuit Board upright and fitting the Bezel over it, so the buttons come through the Control Panel.

Make sure to keep the Keypad wrapped around the edges of the Circuit Board.

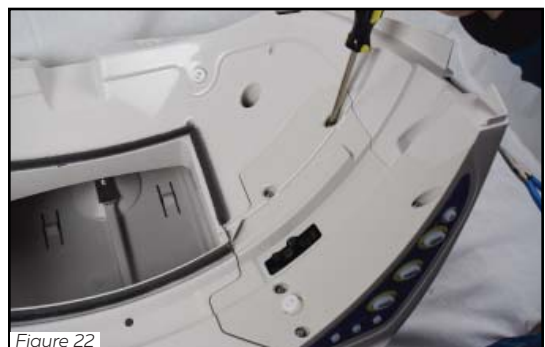


16. Make sure the edges of the Bezel rest flush with the Base.

Once in place, look through the opening where the black Gear protrudes and make sure no wires are visible. If wires are visible, remove the Bezel, tuck them into the wire channel, and secure them with stretchable tape if necessary.



17. Attach the Bezel by tightening the 5 screws. Do not overtighten.



REPLACE THE APPLIQUE

18. Remove the blue applique from the front of the Bezel. Use your fingernail or a utility knife to pry up the edge, then peel it off.



Figure 23

19. Apply the new black applique. Peel off the backing and align the inner edge of the applique with the plastic outline as shown in Figure 24. Press on firmly.



Figure 24

AFFIX THE SERIAL NUMBER STICKER

20. Affix the new serial number sticker to the back of the Base. Place it above the Cat Sensor foot in the indented area as shown in Figure 25.

WARNING: Do not readjust; sticker reads VOID if peeled off.

Note: This serial number sticker is required for onboarding and service of your unit.



Figure 25

REASSEMBLE YOUR LITTER-ROBOT

21. Reassemble the Globe, Bonnet, and Waste Drawer.

Plug the unit in, power it on, and let the initial Clean Cycle finish. The Globe should return to the Home position with the blue Ready light on.

Troubleshoot

If your unit does not cycle or does not cycle properly, review your installation:

If the unit will not turn on and appears to have no power, check that the 6-pin connector (that holds the wires to the Motor and power) is secured to the Circuit Board in the correct orientation.

If the blue light is flashing, check that the 4-pin connector (that holds the DFI wires) is secured to the Circuit Board in the correct orientation.

If the red light is flashing, check that the 8-pin connector (that holds the Hall Effect sensor wires) is secured to the Circuit Board in the correct orientation.



Figure 26

CALIBRATE THE NEW CIRCUIT BOARD WITH THE CAT SENSOR

22. To ensure that your new Circuit Board works optimally with your Cat Sensor, calibrate it.

A. Make sure the unit is fully assembled, powered on, and the control panel displays a solid blue light.

B. The Globe and the Waste Drawer must be empty. If there is litter in the Globe, press the Empty button to cycle the unit clockwise, which will deposit the litter into the Waste Drawer. The Globe will pause at the Dump position; press Reset to return the Globe to the Home position. Then, empty the Waste Drawer.

C. Ensure the unit is placed on a firm, level surface and is not pressed against any walls.

23. Press the Reset and Empty buttons until the red light starts to flash (about 6 seconds). Release the buttons and be careful not to touch or influence the weight of the unit while it is calibrating.

The unit will display one of the following:

A. Solid blue light:

Unit is calibrated and ready for use.

B. Flashing red light with solid blue light:

Unit will use default settings. Press Reset to return to a solid blue light; the unit is ready for use.

C. Flashing red light with solid yellow light:

Unit will use default settings. Press Reset to return to a solid blue light; the unit is ready for use.

If you get result (B) or (C), you may want to monitor your unit to make sure it detects your cat and cycles properly. If you experience any problems, contact Customer Service.



Figure 27



Figure 28

TEST YOUR WEBCONNECT BOARD INSTALLATION

24. Press and hold the Cycle and Empty buttons until the Power button goes from white to blue (see Figure 29). Your unit is in WiFi Mode. To exit, press the Reset button.

Troubleshoot

If the Power button turns blue, then red, make sure the 4-pin connectors on the wire harness are secured to the Main Circuit Board and WebConnect module in the correct orientation.

If the Power button does not turn blue, check that you have installed the new Main Circuit Board for Connect. Look for the horizontal white rectangle at the top of the board, as shown in Figure 30.



Figure 29

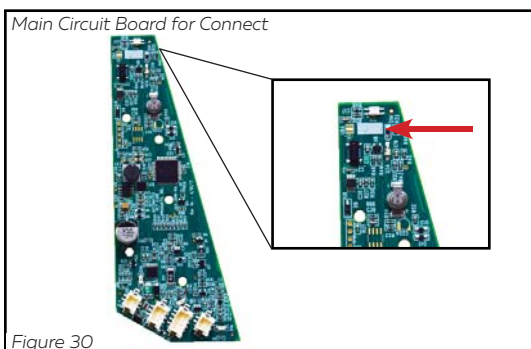


Figure 30

ONBOARD YOUR LITTER-ROBOT

Congratulations! You have successfully upgraded your Litter-Robot.

Follow the **Connect Quick Start Guide** to onboard your Litter-Robot and connect to the app.

