

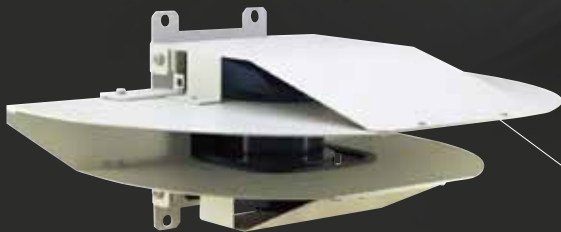
# Sensor Systems for Container Supply Chain



# UXM Series

## Features

- Field of View : 190°
- Scanning Range : 80m (30m with 10% reflectivity)
- Angular Resolution : 0.125°
- Measurement Accuracy :  $\pm 50\text{mm}$  (at 30m with 90% reflectivity)
- High Speed Communication by Ethernet
- IP67 protection for outdoor use
- Multi Echo Functionality is ideal for harsh environments such as rain, snow and fog.
- Heater is available for cold environments.
- Lightweight at only 0.8kg making the unit easy to install in hard to access locations.
- Safety design : FDA Laser Class 1



### Option

Sunlight interference prevention cover

## Structure Laser range zone

Step : 1520

Scan angle : 190°

Angular resolution : 0.125°

UXM-30LAH-EWA  
UXM-30LXH-EWA

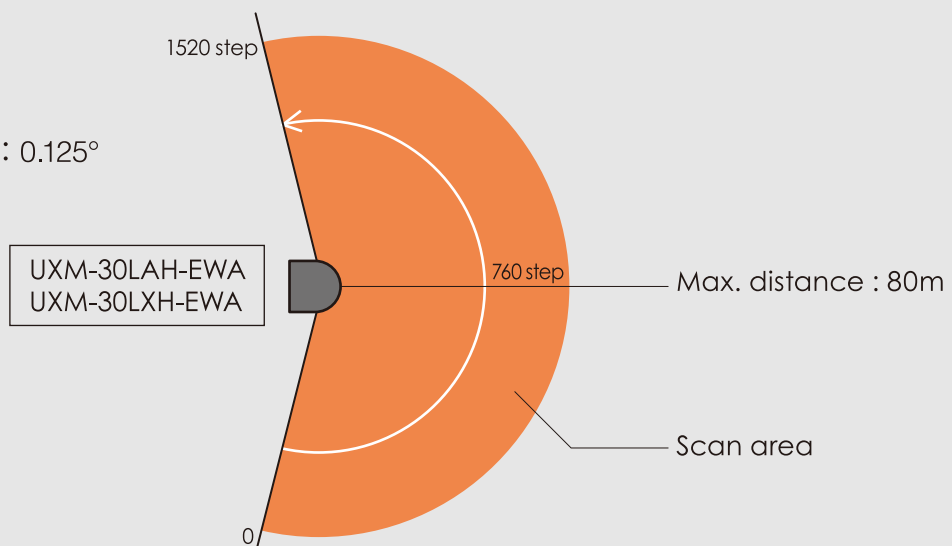
1520 step

760 step

Max. distance : 80m

Scan area

0



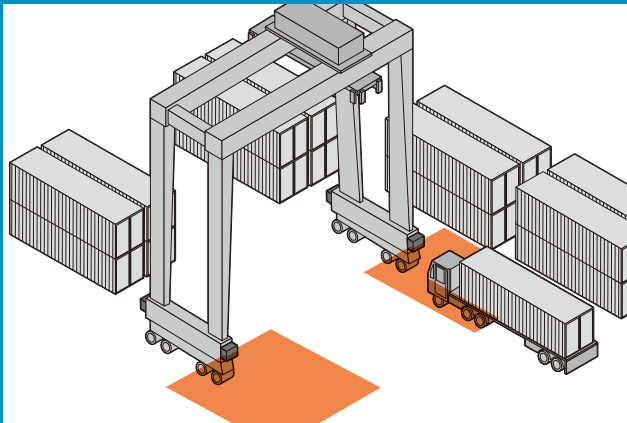
## Area setting type

### UXM-30LAH-EWA

The UXM-30LAH series accurately detects objects when they move into and out of pre-configured zones. Typically these outputs are used for “Warning”, “Slowdown” and “Stop”

#### Collision avoidance for RTGs, RMGs and AGVs

The RTG can be slowed down or stopped based on output status retrieved from the sensor.



#### Applications

- Obstacle detection of RTGs, RMGs and container AGVs
- Area monitoring to prevent collision between crane booms and ships

#### Area monitoring between crane booms and ship deck

It is possible to detect the distance between the crane boom and the ship's deck to prevent collision.



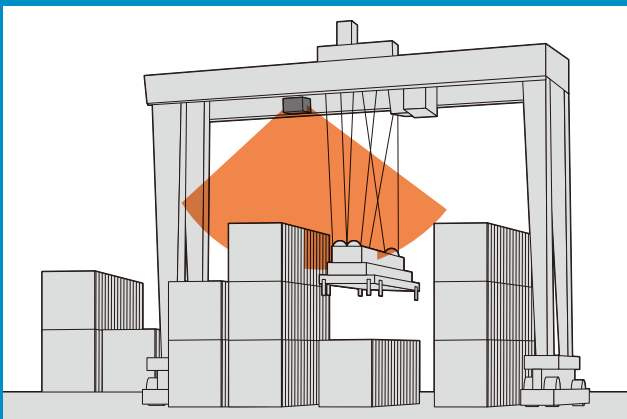
## Data output type

### UXM-30LXH-EWA

The UXM-30LXH series is suitable for measuring the distance to objects beneath an RTG. It is possible to detect size, position and the moving direction of objects.

#### Container Positioning for picking up

It is possible to pick up containers precisely based on distance and angle measurements obtained from the sensor.

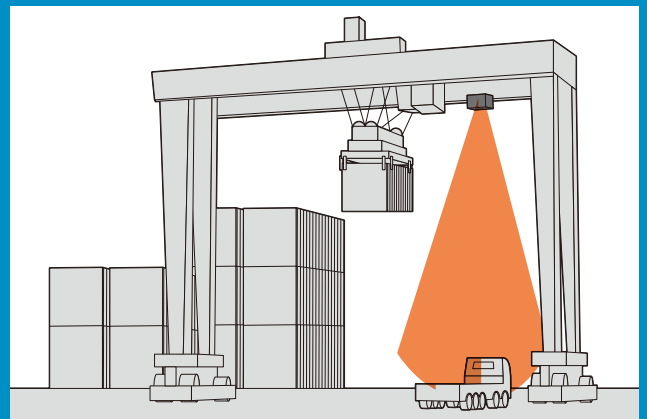


#### Applications

- Container Positioning
- Vehicle stop point assistance
- Container size measurement

#### Container Positioning for vehicle loading

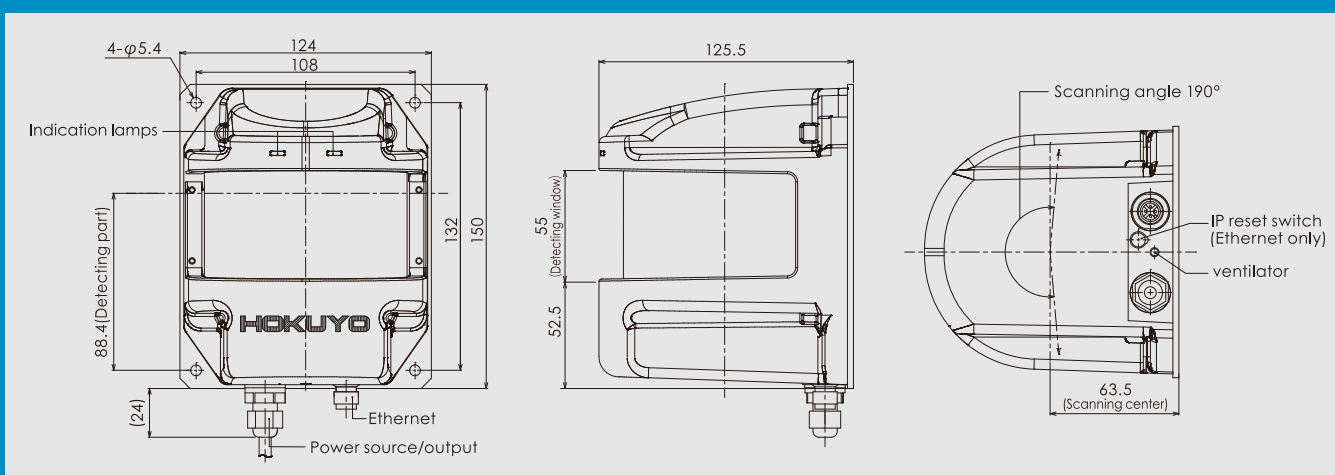
Using data from the UXM sensor, containers can be placed in the perfect position on to the waiting vehicle.



# Specification

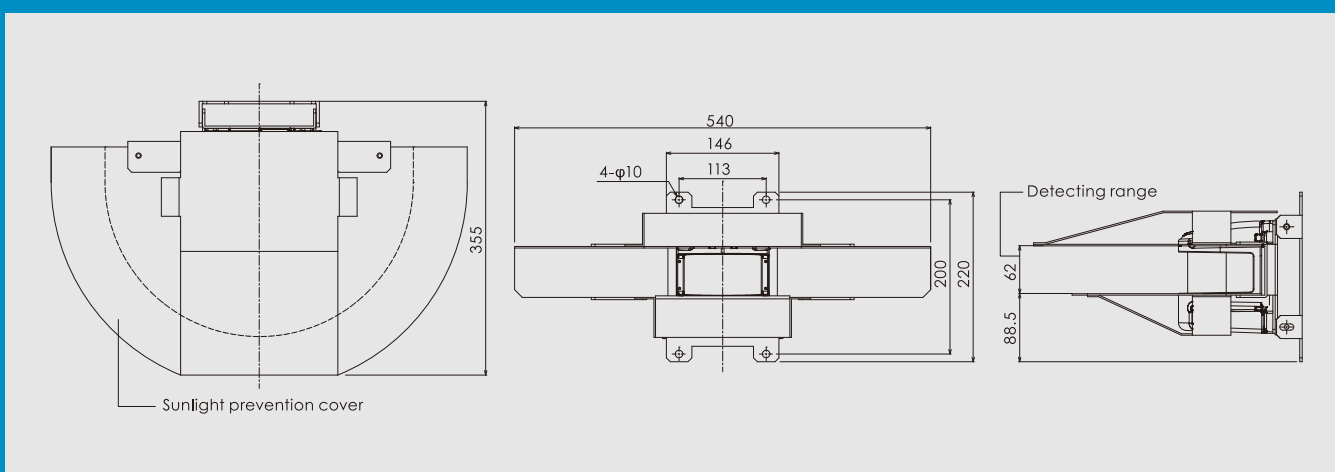
	Detection area setting type	Data output type
	UXM-30LAH-EWA	UXM-30LXH-EWA
Power Source	10 to 30VDC	10 to 30VDC
Scanning range	0.1 to 80m	0.1 to 80m
Scanning angle	190°	190°
Angular Resolution	0.125	0.125
Scanning accuracy	0.1 to 30m→±50mm	0.1 to 30m → ±50mm
Data Output	n/a	1520 steps (80m,190°)
Control Output	4 output signal : Error output , Output 1 , 2 and 3 NPN Open Collector	Error and Sync.
Input	4 input signal : Area Switching 1 , 2 , 3 and 4	n/a
Scanning time	50msec/scan	50msec/scan
Interface	Ethernet	Ethernet
Weight	Approx.800g	Approx.800g

## External dimension



## External dimension

Option : Sunlight interference prevention cover



### HOKUYO AUTOMATIC CO.,LTD.

Osaka HU Building, 2-2-5 Tokiwamachi, Chuo-Ku,  
Osaka, Japan. 540-0028

TEL: +81-6-6947-6333 FAX: +81-6-6947-6350

URL <http://www.hokuyo-aut.jp>

E-mail: [info@hokuyo-aut.jp](mailto:info@hokuyo-aut.jp)