

Features:

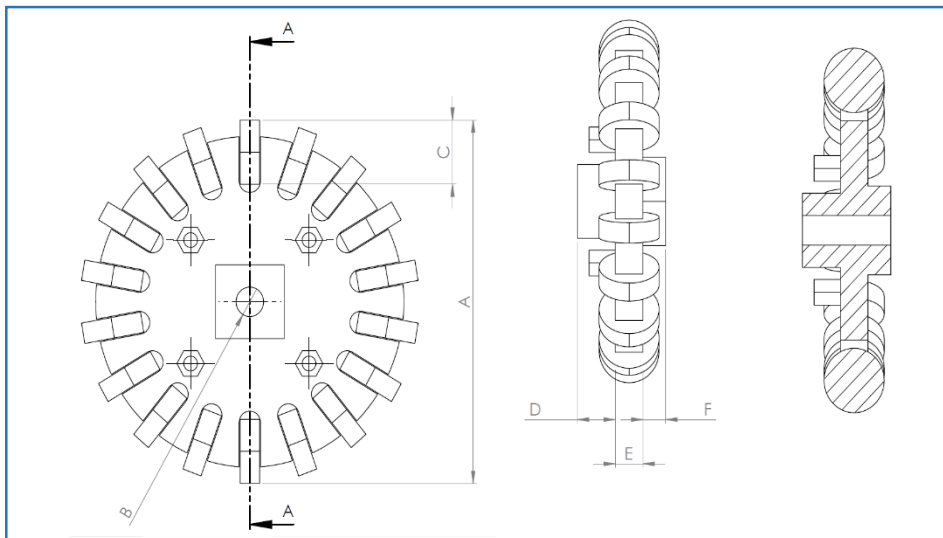
- Multi-directional ability
- no need for turning around
- saving time and energy
- able to circle arrangement with only 3 wheels
- 3 cyclic arrangements.

- Light
- thin
- have a good friction with the surface



Specifications:

- 50 mm Diameter
- 4 mm Hole size Omni wheel
- Roller wheels: Grade A-Steel / Grade B-Brass
- Material: Aluminum
- Roller Cover: Rubber



Grade	Body	Roller
A	CNC machine	Steel
B	CNC machine	Brass
C	non-CNC machine	Steel
D	non-CNC machine	Brass

Model	Grade	A (mm)	B (mm)	C (mm)	D (mm)	E (mm)	F (mm)	Weight (gr)
SW-504	A-D	50	SW-504: 4	8	6	3	4	36