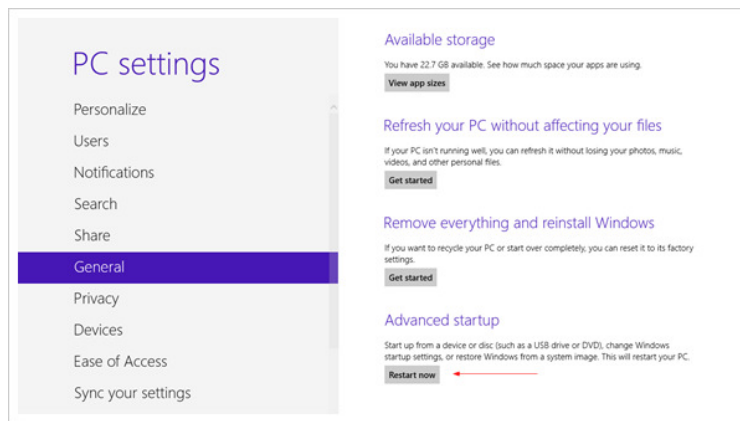




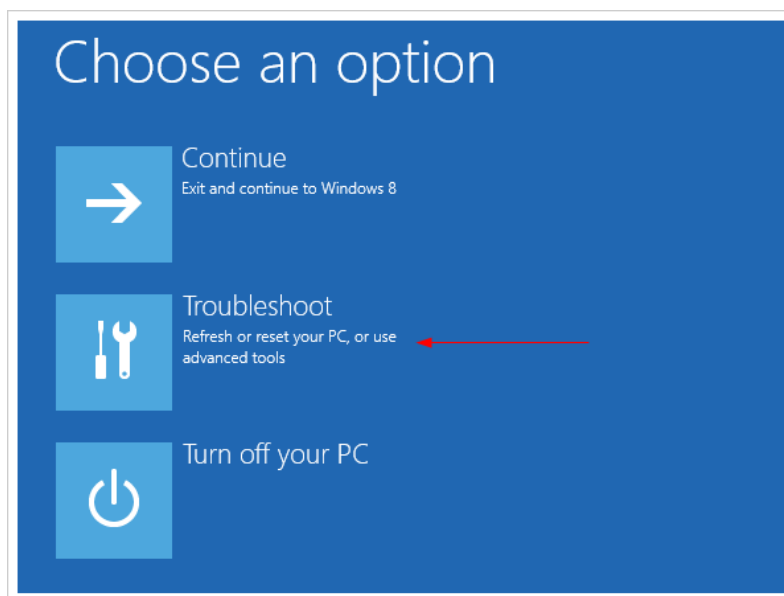
Installing the LAC Configuration Software in Windows 8

First, press **win + I** to launch the charm bar, and click **Change PC Settings** at the bottom.

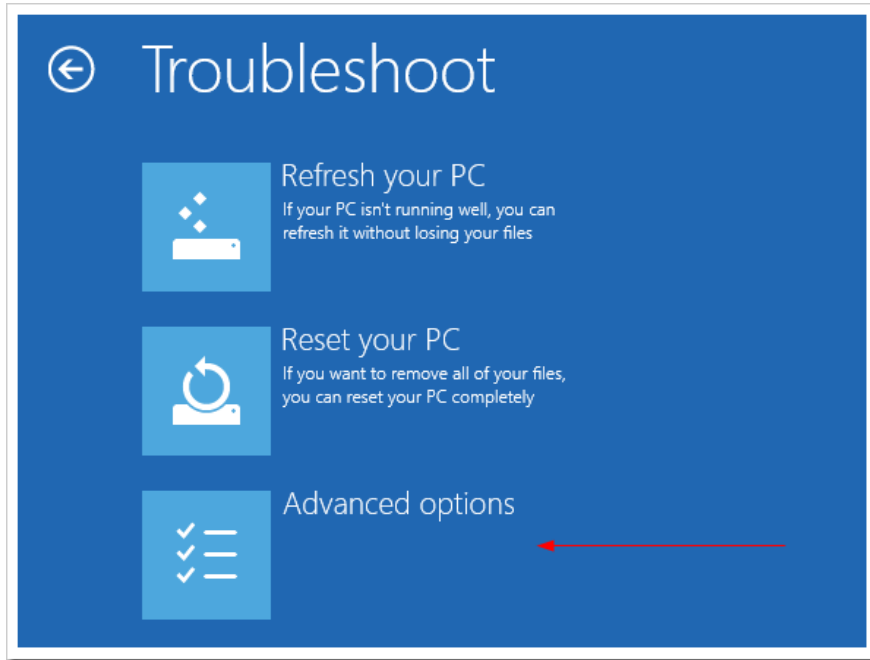
Then, go to **General**, and scroll to the bottom of the page, click **Restart Now** button under **Advanced Startup** section. Remember to save all your work first before clicking it.



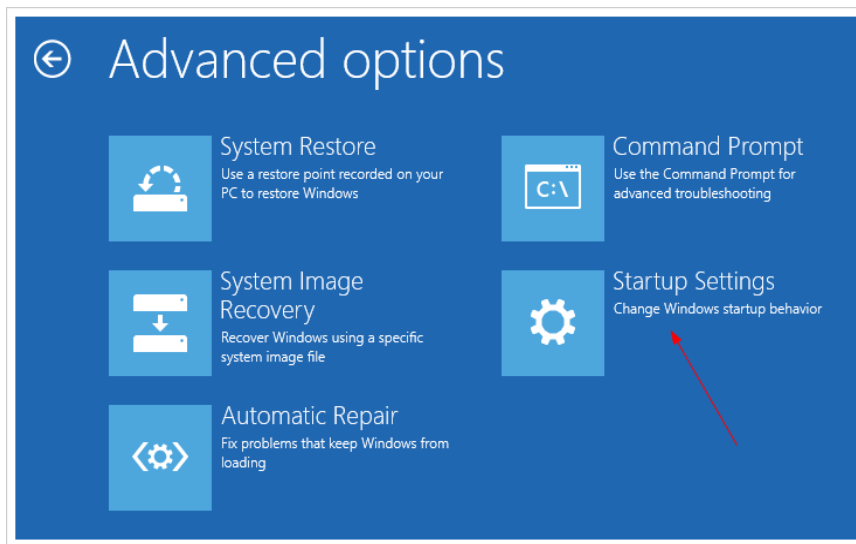
The computer will reboot to a startup menu, and then click **Troubleshoot**.



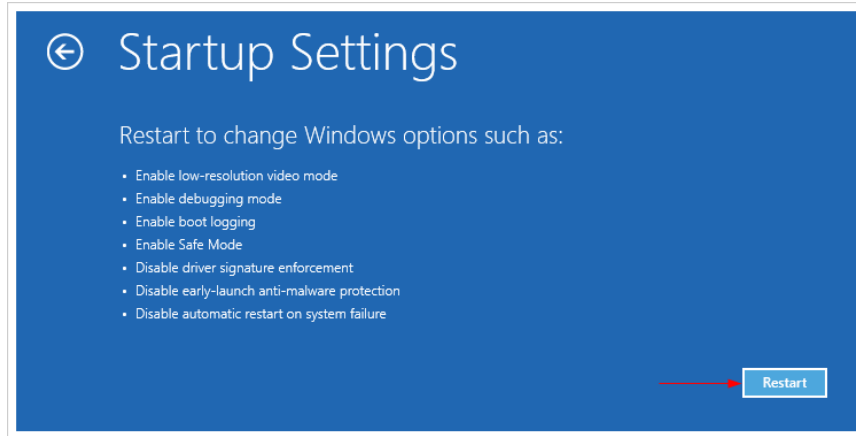
Click **Advanced Options** at next screen.



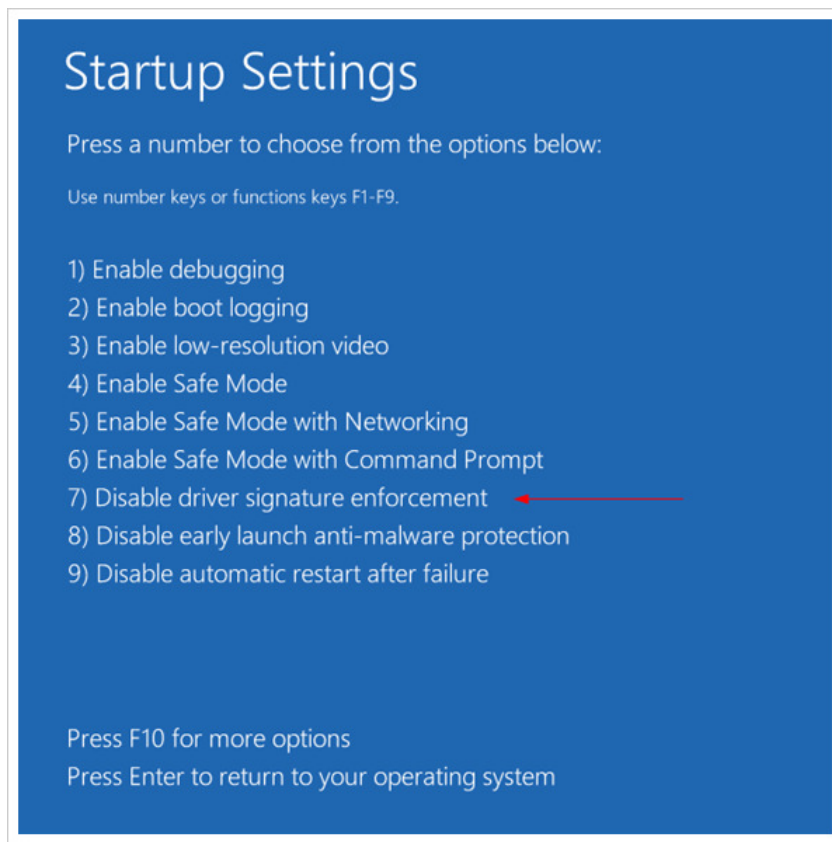
Choose **Startup Settings** next,



And click the **Restart** button.



The computer reboots and prompts another menu to choose from. One of the items is to “**Disable driver signature enforcement**”. Press number **7** or **F7** to continue booting to Windows 8 with digital sign enforcement disabled.

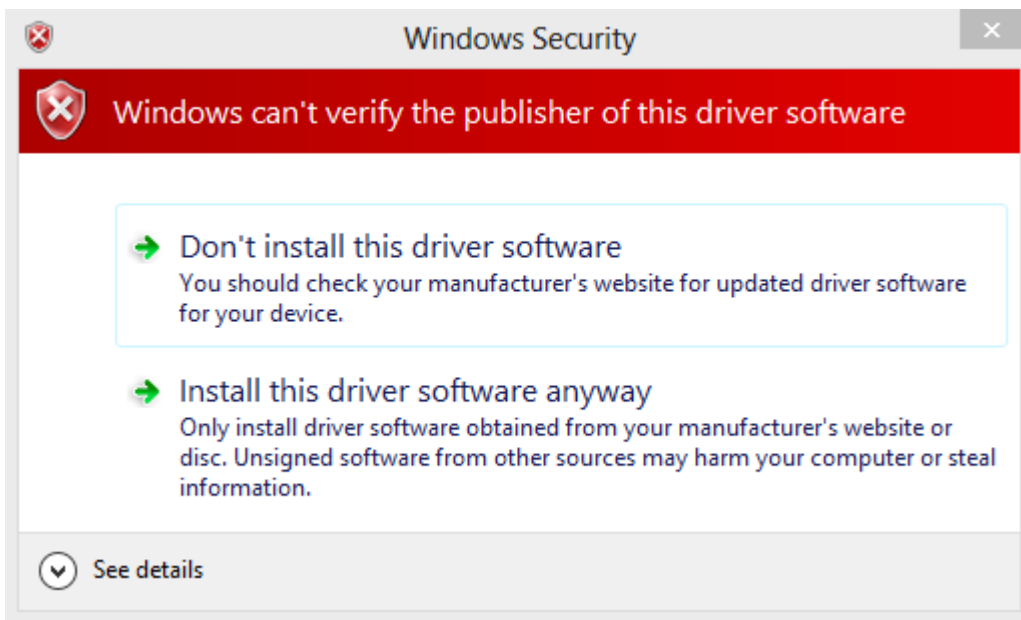


After booting, run the “Firgelli LAC Configuration Utility-1.4-Setup”. After it finishes, plug in your powered LAC board

You should now be able to get the Windows Security warning window offering to install the driver.

If you have already plugged in the LAC board before disabling Driver Signature Enforcement, you will have to press Win+X → Device manager → Other Devices. Right click on “Microchip Custom USB Device”, and then left click on “Update Driver Software” and “Browse my computer for Driver Software”. Enter “C:\Program Files (x86)\Firgelli LAC Configuration Utility\IA64 (or AMD64) →Next

You should get the following window:



Click on “Install this driver software anyway”

Restart computer once again to re-enable the digital sign enforcement.