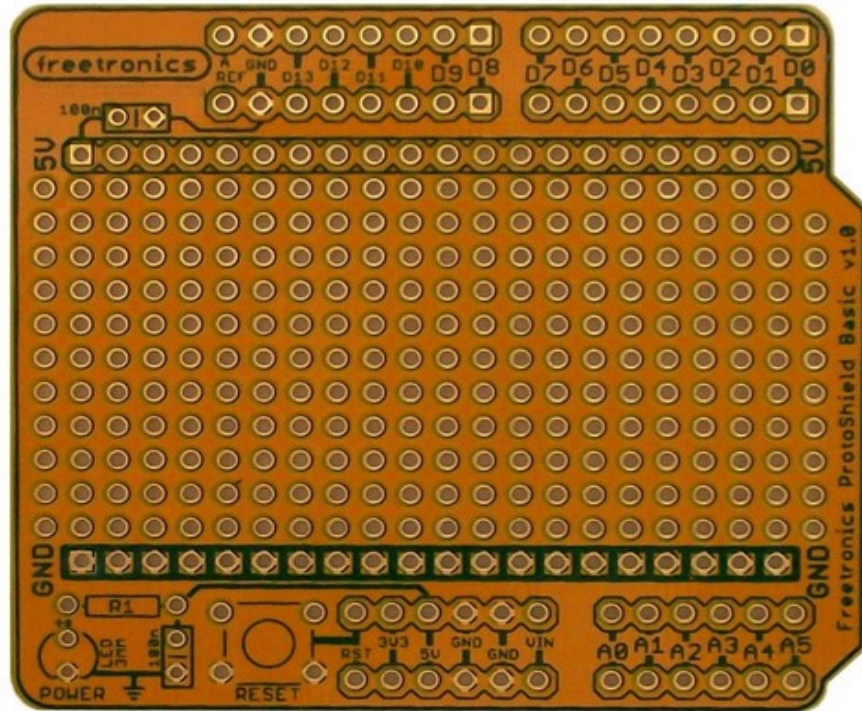


RB-Fee-13 ProtoShield Basic Prototyping Board for Arduino



Breadboards are great for quickly prototyping Arduino projects on the workbench, but they're really inconvenient if you want to make something a bit more permanent. The solution: a prototyping shield!

ProtoShields fit directly onto an Arduino compatible such as the Eleven and have a large general-purpose area in the middle where you can solder on your own parts for a durable, long-lasting project. The ProtoShield Basic is designed to be so cheap that you can keep a few around "just in case". The PCB surface is gold-plated for maximum durability, and it has connection markings on both the top and the bottom so you don't get RSI turning the PCB over every 3 seconds to see what connections go to which pins.

Features

- Gold plated PCB: solders easily and very resistant to corrosion
- Top and bottom overlay
- Mounting pads for "reset" button wired through to Arduino reset line
- Mounting pads for "power on" LED and current-limiting resistor
- Mounting pads for 2 x 100nF power supply smoothing capacitors
- Clearly marked GND and 5V rails beside prototyping area
- Sexy rounded corners