

RB-Ezr-08
EZ-Robot Revolution Six WiFi Hexapod



This Hexapod is a creative robot platform. Assembled with EZ-Bits, Six is a very customizable robot with 6 legs and 12 degrees of freedom. The joints are powered by 12 heavy duty servo motors for unique dynamic movement abilities. The removable EZ-Bit joints and top mounted camera enhance interactivity with the world. Unleash your creativity and discover how versatile a hexapod robot can be.

Easily program new movements and interactions with the included EZ-Builder Software. Like all Revolution robots, Six is a great platform to customize with additional EZ-Bits using Clip 'n' Play technology. 12 female EZ-Clips surround the circular body and 1 female EZ-Clip on the dome. Simplicity inspires creativity!

Hexapod

A hexapod is a robot that walks on six legs. Since this style of robot can be statically stable on three or more legs, a hexapod robot has a great deal of flexibility in how it can move. If legs become disabled, the robot may still be able to walk. Furthermore, not all of the robot's legs are needed for stability; other legs are free to reach new foot placements or manipulate a payload.



Clip'n'Play

Customize your robot with EZ-Bits. All EZ-Robot Revolution parts include EZ-Bit Connections. Simply sliding the tab into the slot and establish a secure bond. The parts may be separated by reversing the process. Multiple EZ-Bits can be connected together to make arms, legs and more.

Vision

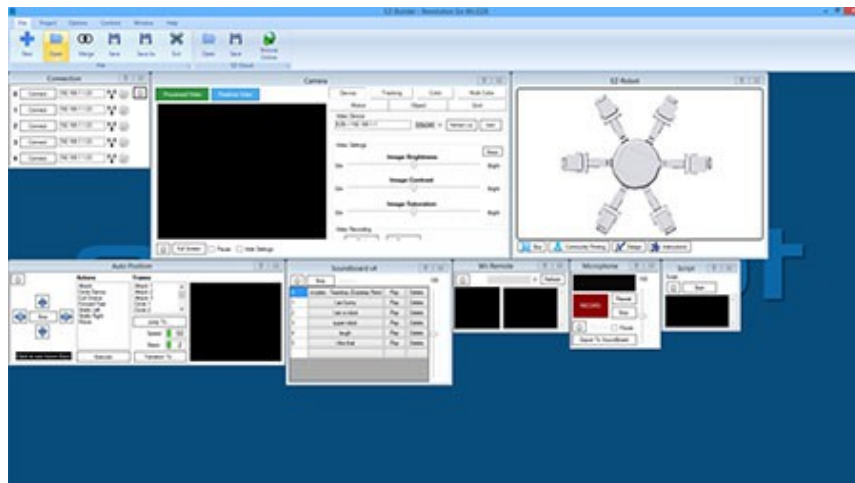
Six includes the EZ-Robot Camera. This gives your robot the ability to track objects, faces, colors, motion and more. You can easily customize the vision tracking behaviors.

Education and Home

In the classroom or at home, EZ-Robot revolution has a big impact on education. Not only do students learn about robotics, they have fun doing it. With hundreds of tutorial videos, no questions are left unanswered. Personalizing EZ-Robot behaviours teach students how robots walk, see, hear and interact with their surroundings.

Easy-to-use Software

If hardware is the heart of your EZ-Robot, then software is the soul. Introducing EZ-Builder Robot Software. Your EZ-Robot is controlled by the World's easiest, most powerful and scalable robot software. EZ-Builder takes a productive and unique approach to programming your robot. Simply add behaviors such as Camera Tracking, Speech Recognition, Wii Controller, GPS, GAIT Positioning, and hundreds more!



Create Animations

Like a flip book, the Auto Position in EZ-Builder is used to animate your EZ-Robot. It's magic! The software will automatically calculate how to transition between your custom frames.

Mobile Support

Use your Android or iOS Mobile Device with an App from our EZ-Cloud App Store, or create your own App easily in our EZ-Builder Robot Software.

Vision Tracking

The camera enables advanced vision learning, detection and tracking abilities. Your EZ-Robot will interact with Objects, Colors, Faces, Motion, Glyphs, and QR Codes.

High Tech Brain

The EZ-B v4 is not only the brain of your EZ-Robot, it is also the World's most powerful and compact robot brain! The EZ-B v4 scales for beginner and advanced users. The EZ-B is two PCB's sandwiched together in a compact 2x2 inch package. For protection, the speaker and electronics are enclosed within a stylish white plastic shell with a speaker chamber for clear enhanced audio. For advanced users, the EZ-B may be removed from its casing and mounted directly in your custom robot.

- 200MHz 32-Bit Processing (120 MHz 32-bit Cortex M3 ARM Processor & 80 MHz Microchip PIC32)
- Small Size (2.1" x 2.2")
- WiFi connectivity (Ad-Hoc/Infrastructure/WEP/WPA/WPA2)
- Embedded Web Server
- Energy Efficient Digital Switching Power Supply
- Resettable fuse protection
- Reverse polarity protection
- 1 x Amplified Speaker for Speech and Music
- 8 x 5 volt tolerant Analog (ADC) ports
- 24 x 5 volt tolerant Digital ports (servos, PWM, and more)
- Up to 73 Servos (combining PWM and Dynamixel)
- Dynamixel Servo Support
- 3 x i2c Port
- 1 x EZ-Robot Video Camera Port
- 3 x High Speed UART Ports
- Battery and Temperature Monitor

Heavy Duty Servo Motor

Includes digital heavy duty 15 kg/cm servo motors! The metal gear and ball bearing internals will withstand a high load. These servos were designed with enough strength to enable your robots to walk, move or lift.

- Operating speed: 0.24sec/60degree (7.4V)
- Stall torque: 15.0kg-cm/529 oz-in.(7.4V)
- Temperature Range: -20C to +60C
- Operating Voltage: 4.8V to 7.4V
- 3 pole ferrite
- Dual ball metal bearing
- All metal gears
- connector wire length: 32cm
- Futaba 3f (25 teeth) for driving spline/shaft
- 6.2mm spline (including teeth)

Includes

- 1x EZ-B v4 WiFi Robot Controller
- 1x EZ-Builder Control Software with Apps
- 1x Hexapod Body
- 1x LiPo Battery 7.4VDC 1300mAh

- 1x LiPo Battery Balancer Charger
- 1x EZ-Robot EZ-B v4 Camera
- 12x Lever Servo-motor
- 6x Hexapod Foot
- 1x Wire Spiral Wrap Pack

Dimensions

- Width: 36cm
- Length: 36cm
- Height: 18cm
- Weight: 2.600kg