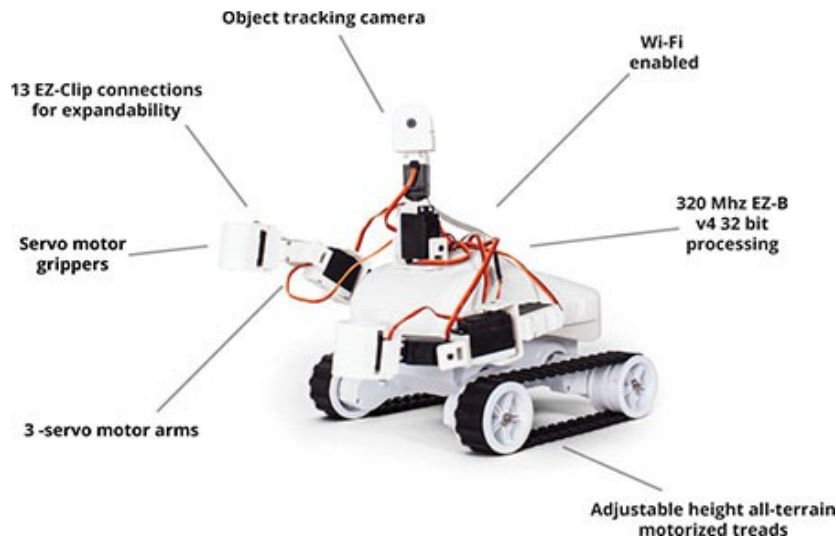


RB-Ezr-06 EZ-Robot Revolution Roli Rover Robot Platform



Roli is a very customizable planetary rover styled robot platform with 13 female EZ-Bit connections for additional EZ-Bits. Much like a space exploration vehicle, this robot was designed to be a workhorse and move across different surfaces. With a 7.4v LiPo battery powering 2 motors, this robot platform has enough torque to tackle tough terrain. The wheels and treads are also adjustable in height which modifies the ground clearance. The included EZ-Robot EZ-B v4 Camera adds impressive vision tracking capabilities.

Move With Ease

Roli is ready for any terrain. His treads allows him to travel long distances easily and confidently without stumbling. Without the need for wheels, there is little chance of getting stuck inside or out.

Change It Up

There are a total of 13 female Clip'n'Play connections on the chassis of this robot. One on the front, three on the rear, four on each side, and one on top. Also, do not forget about the rear storage and removable drink holder.

Carry Your Soda and More

Roli is here to work! His Payload Adapter is made to carry various objects to where they are needed. His beverage adapter even allows him to bring a cool soda to his guests. Remove the beverage adapter and his payload storage increases.

Grippers

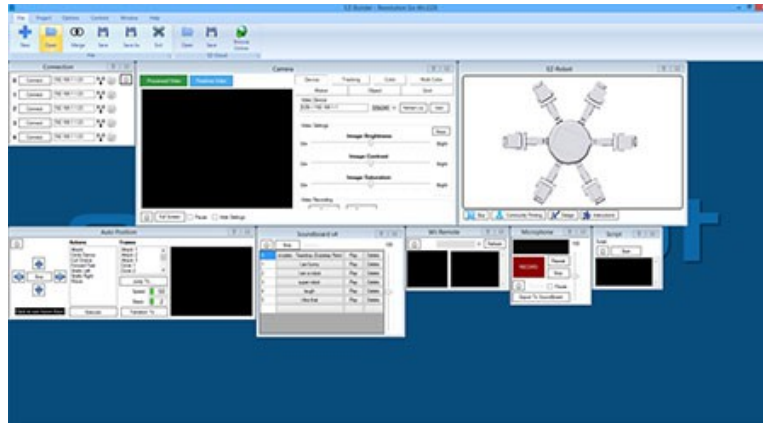
The compact grippers are powered by strong metal geared servo motors. They are useful for picking up and holding objects.

Education and Home

In the classroom or at home, EZ-Robot revolution has a big impact on education. Not only do students learn about robotics, they have fun doing it. With hundreds of tutorial videos, no questions are left unanswered. Personalizing EZ-Robot behaviours teach students how robots walk, see, hear and interact with their surroundings.

Easy-to-use Software

If hardware is the heart of your EZ-Robot, then software is the soul. Introducing EZ-Builder Robot Software. Your EZ-Robot is controlled by the World's easiest, most powerful and scalable robot software. EZ-Builder takes a productive and unique approach to programming your robot. Simply add behaviors such as Camera Tracking, Speech Recognition, Wii Controller, GPS, GAIT Positioning, and hundreds more!

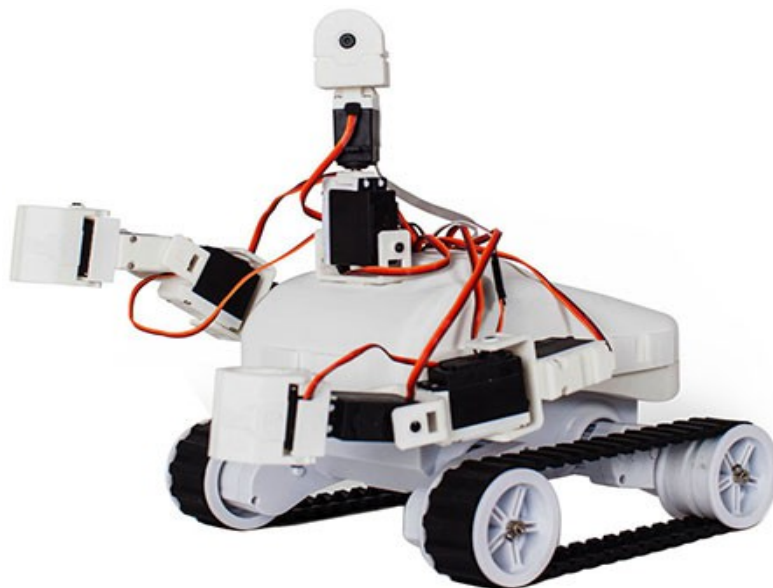


Create Animations

Like a flip book, the Auto Position in EZ-Builder is used to animate your EZ-Robot. It's magic! The software will automatically calculate how to transition between your custom frames.

Mobile Support

Use your Android or iOS Mobile Device with an App from our EZ-Cloud App Store, or create your own App easily in our EZ-Builder Robot Software.

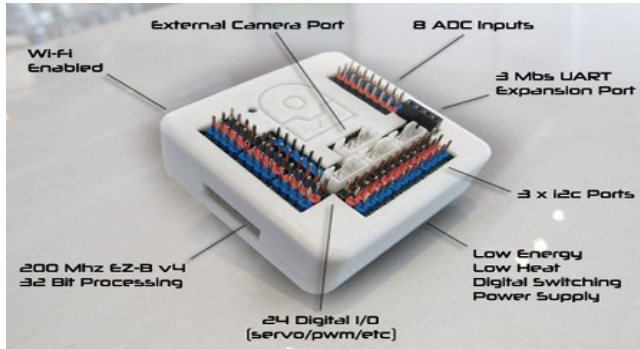


Vision Tracking

The camera enables advanced vision learning, detection and tracking abilities. Your EZ-Robot will interact with Objects, Colors, Faces, Motion, Glyphs, and QR Codes.

High Tech Brain

The EZ-B v4 is not only the brain of your EZ-Robot, it is also the World's most powerful and compact robot brain! The EZ-B v4 scales for beginner and advanced users. The EZ-B is two PCB's sandwiched together in a compact 2x2 inch package. For protection, the speaker and electronics are enclosed within a stylish white plastic shell with a speaker chamber for clear enhanced audio. For advanced users, the EZ-B may be removed from its casing and mounted directly in your custom robot.



- 200MHz 32-Bit Processing (120 MHz 32-bit Cortex M3 ARM Processor & 80 MHz Microchip PIC32)
- Small Size (2.1"x 2.2")
- WiFi connectivity (Ad-Hoc/Infrastructure/WEP/WPA/WPA2)
- Embedded Web Server
- Energy Efficient Digital Switching Power Supply
- Resettable fuse protection
- Reverse polarity protection
- 1x Amplified Speaker for Speech and Music
- 8x 5 volt tolerant Analog (ADC) ports
- 24x 5 volt tolerant Digital ports (servos, PWM, and more)
- Up to 73 Servos (combining PWM and Dynamixel)
- Dynamixel Servo Support
- 3x i2c Port
- 1x EZ-Robot Video Camera Port
- 3x High Speed UART Ports
- Battery and Temperature Monitor

Heavy Duty Servo Motor

Includes digital heavy duty 15 kg/cm servo motors! The metal gear and ball bearing internals will withstand a high load. These servos were designed with enough strength to enable your robots to walk, move or lift.



- Operating speed: 0.24sec/60degree (7.4V)
- Stall torque: 15.0kg-cm/529 oz-in.(7.4V)
- Temperature Range: -20C to +60C
- Operating Voltage: 4.8V to 7.4V
- 3 pole ferrite
- Dual ball metal bearing
- All metal gears
- connector wire length: 32cm
- Futaba 3f (25 teeth) for driving spline/shaft
- 6.2mm spline (including teeth)

Your Future is Green

You care about energy consumption with electronics. This is why EZ-Robot designed an innovative low energy digital switching power supply for our products. While most electronics dissipate heat to lower voltage, our products use an energy efficient power supply which generates practically no heat! Welcome to the future.

Includes

- 1x EZ-B v4 WiFi Robot Controller
- 1x EZ-Builder Control Software with Apps
- 1x Rover Body - Shell
- 2x 3 Servo-motor Arm with Gripper
- 1x Lever Servo-motor
- 1x Rotation Servo-motor
- 1x LiPo Battery 7.4VDC 1300mAh
- 1x LiPo Battery Balancer Charger
- 2x Extension Cable
- 1x EZ-Robot EZ-B v4 Camera
- 1x 2.5 Amp Motor Controller
- 2x Wire Spiral Wrap (6" length)

Dimensions

- Width: 23cm
- Length: 24cm
- Height: 32cm
- Weight: 3.800kg