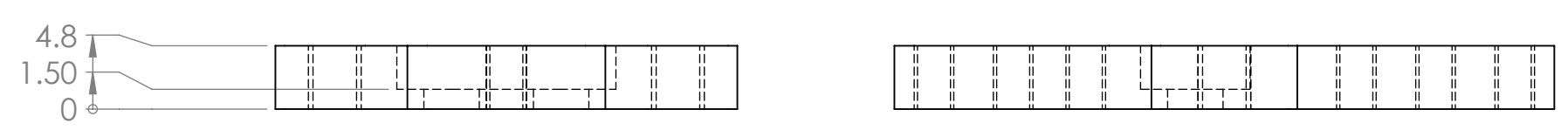
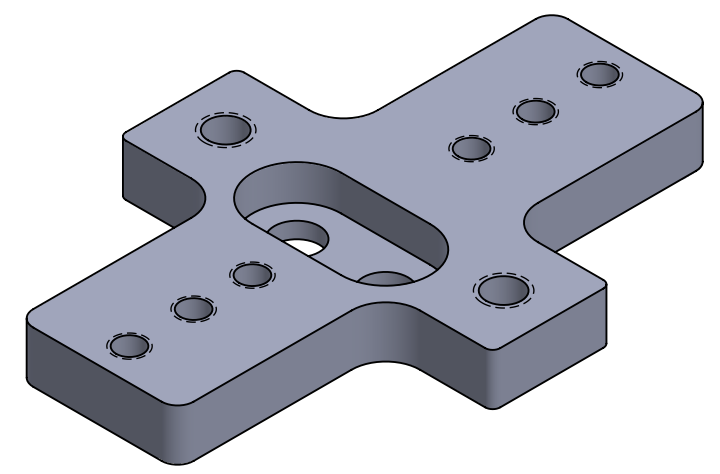
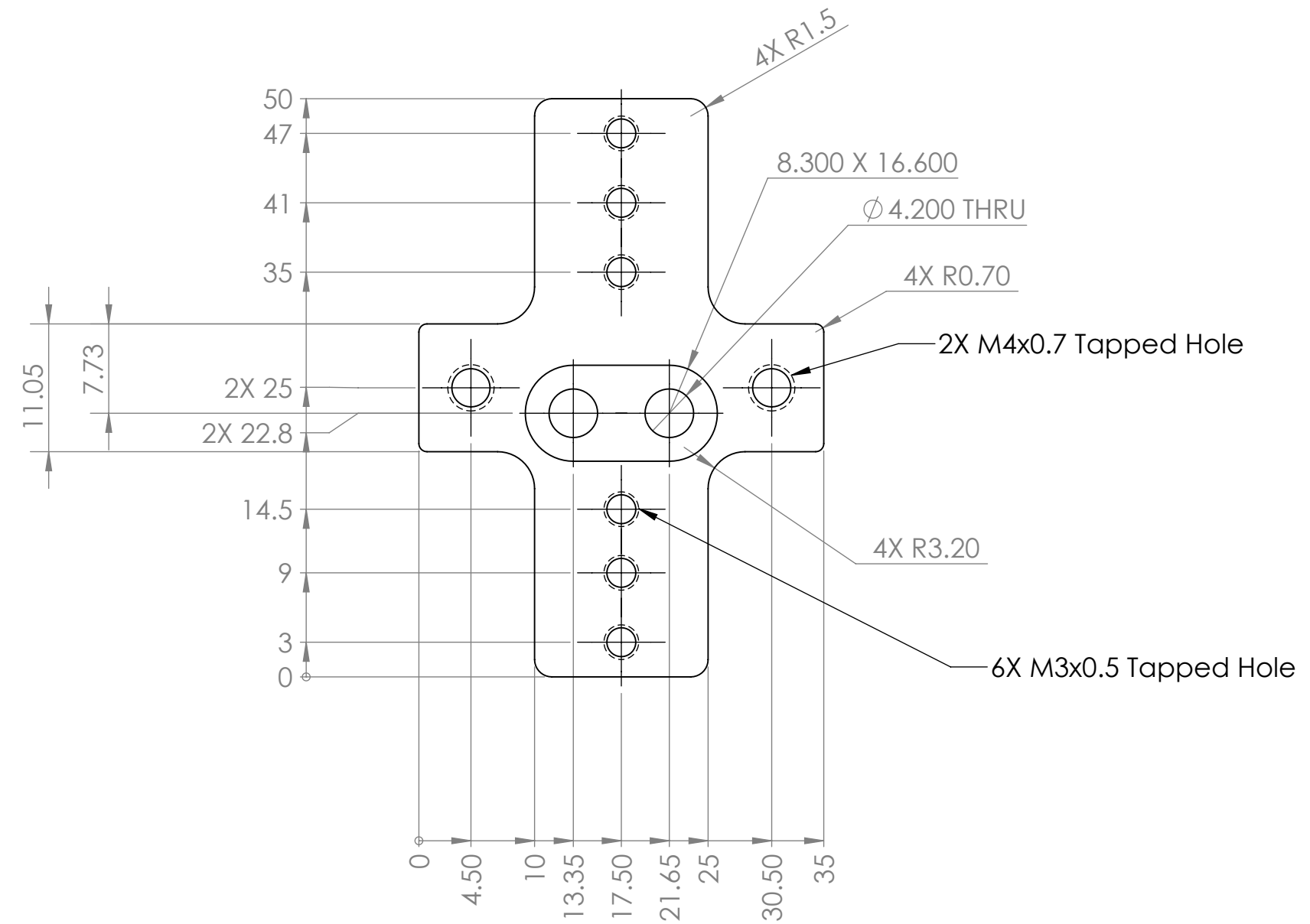


REVISIONS				
ZONE	REV.	DESCRIPTION	DATE	APPROVED
	A	INITIAL RELEASE	4/21/2018	WHO



NOTES	
1	Material: 6061-T6 ALUMINUM ALLOY.
2	FINISH: ANODIZE AND SEAL, CLEAR
3	REMOVE ALL BURRS AND SHARP EDGES.
4	PARTS MUST BE CLEAN (FREE OF DUST, CHIPS, AND MACHINE OIL).
5	PARTS MUST BE RoHS COMPLIANT.
6	PACKAGING: PACK IN INNER BOXES OF NO MORE THAN 10 Kg GROSS WEIGHT, AND OUTER SHIPPING BOXES OF NO MORE THAN 22.5 Kg GROSS WEIGHT.
7	LABELING: MARK INNER BOXES WITH EMS PN., REVISION NUMBER, MANUFACTURER NAME OR ID, AND DATE OF MANUFACTURE.
8	ON MACHINED SURFACES: MACHINE FINISH TO BE 125 Ra OR BETTER PRIOR TO FINISH.
9	ORIGINAL CAD FILE FOR PART (SOLIDWORKS 2018) OR EXPORT DATA (IGES, STEP, ETC.), CAN BE PROVIDED UPON REQUEST.

PROPRIETARY AND CONFIDENTIAL
THE INFORMATION CONTAINED IN THIS
DRAWING IS THE SOLE PROPERTY OF
EVIL MAD SCIENCE LLC. ANY
REPRODUCTION IN PART OR AS A WHOLE
WITHOUT THE WRITTEN PERMISSION OF
EVIL MAD SCIENCE LLC IS PROHIBITED.

UNLESS OTHERWISE SPECIFIED:		DRAWN		NAME		DATE		EVIL MAD SCIENCE LLC www.evilmadscientist.com	
DIMENSIONS ARE IN MILLIMETERS		CHECKED						TITLE: RIGID END EFFECTOR	
TOLERANCES:		ENG APPR.						EMS PART No.: 61-0211	
ANGULAR: MACH ± BEND ±		MFG APPR.						SIZE DWG. NO. REV C RigidEndEffector_61-0211A A	
ZERO PLACE DECIMAL ±.5								SCALE: 2:1 WEIGHT: SHEET 1 OF 1	
ONE PLACE DECIMAL ±.25									
TWO PLACE DECIMAL ±.1									
INTERPRET GEOMETRIC TOLERANCING PER:		Q.A.							
MATERIAL		COMMENTS:							
FINISH		ENGINEERING CONTACT:							
APPLICATION		Windell Oskay							
DO NOT SCALE DRAWING		windell@evilmadscientist.com							
		(408) 462-1064							