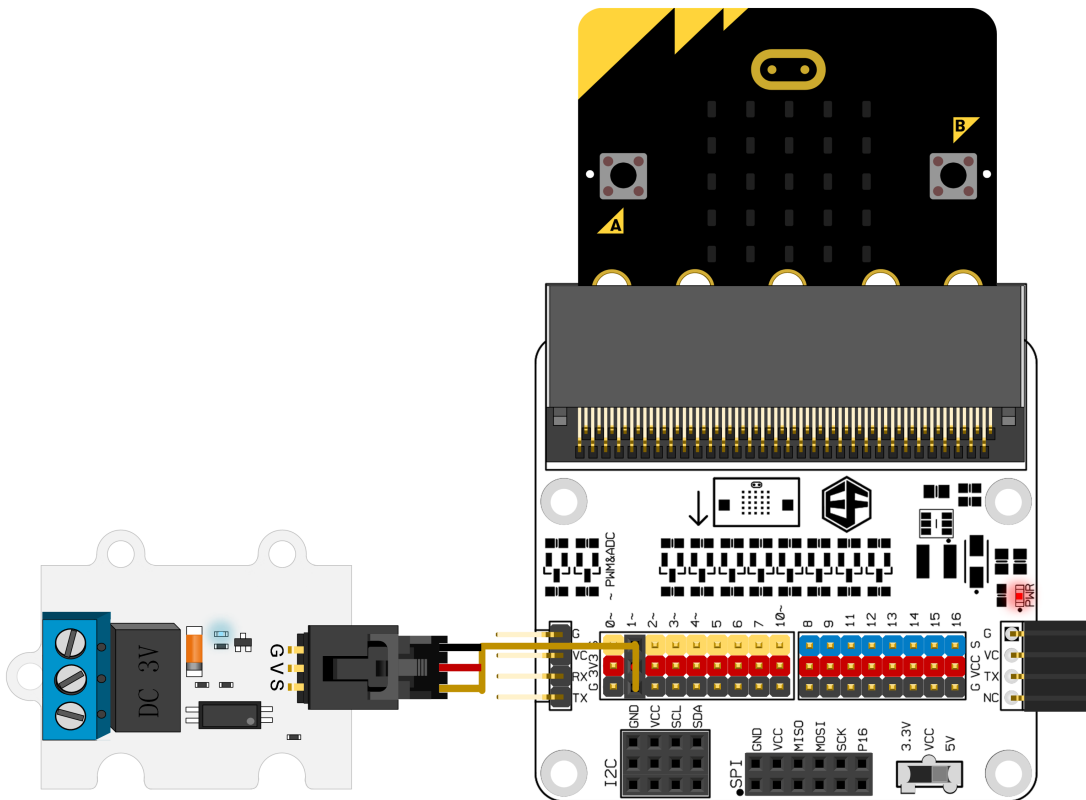


Quick Start

Hardware Connection

Connect the relay module to P1 on octopus:bit using a jumper cable. Insert micro:bit into the edge slot of octopus:bit.



Programming

Click to open [Makecode](#), write your code in the editor area. Set high electric level to P1 port to make the normally open contact close and the normally closed contact open. Thus, we are able to control the connection of contact switch through code.

Link of the whole program: https://makecode.microbit.org/_Lvega7TP6ggz