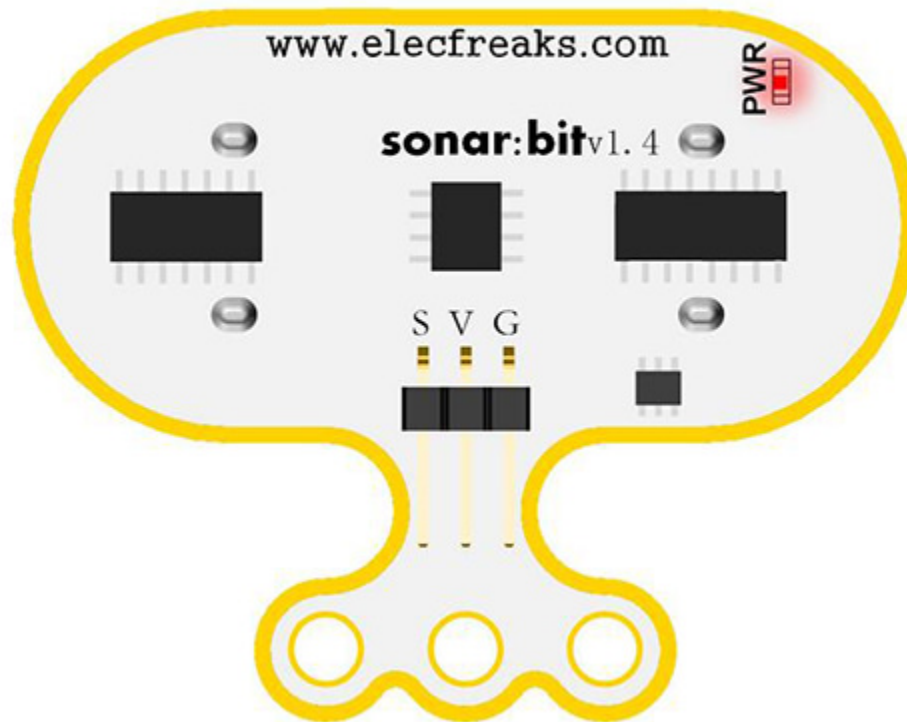


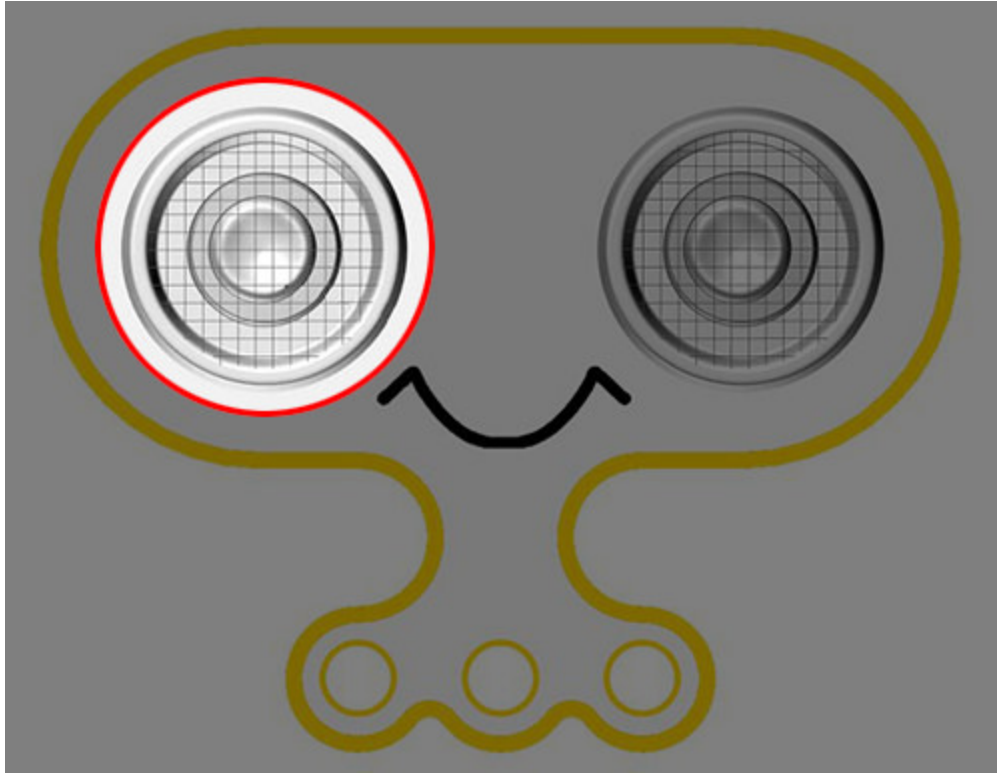
Definition of Pins

ELECFREAKS SONAR:BIT V1.4



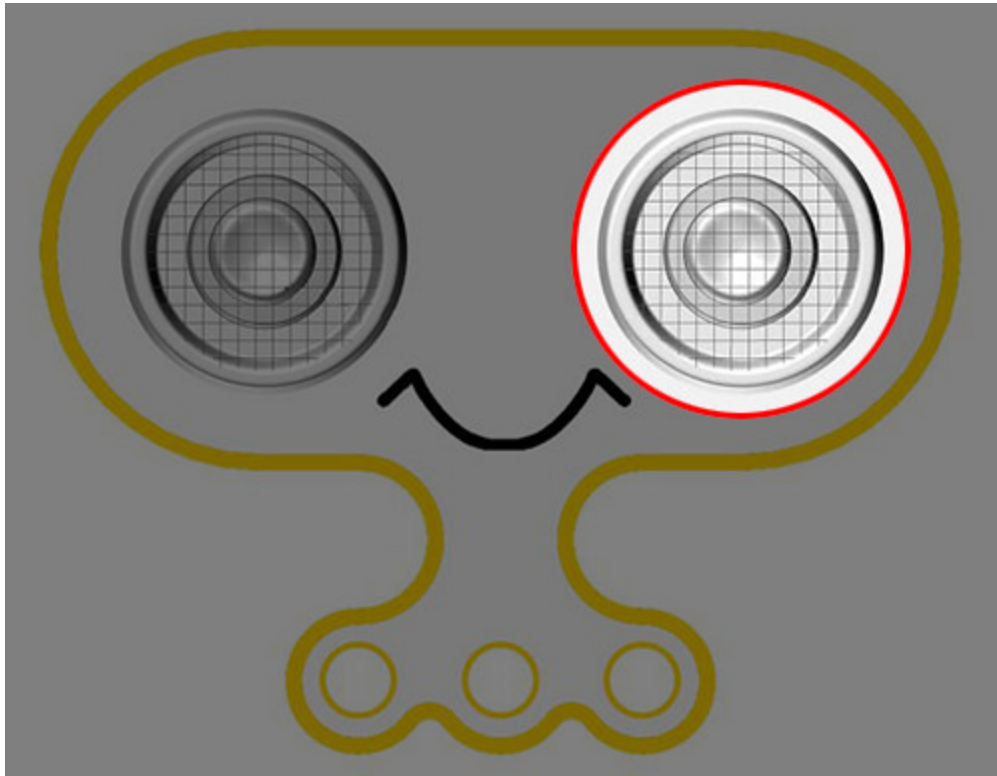
Introduction of Major Components

Transmitter



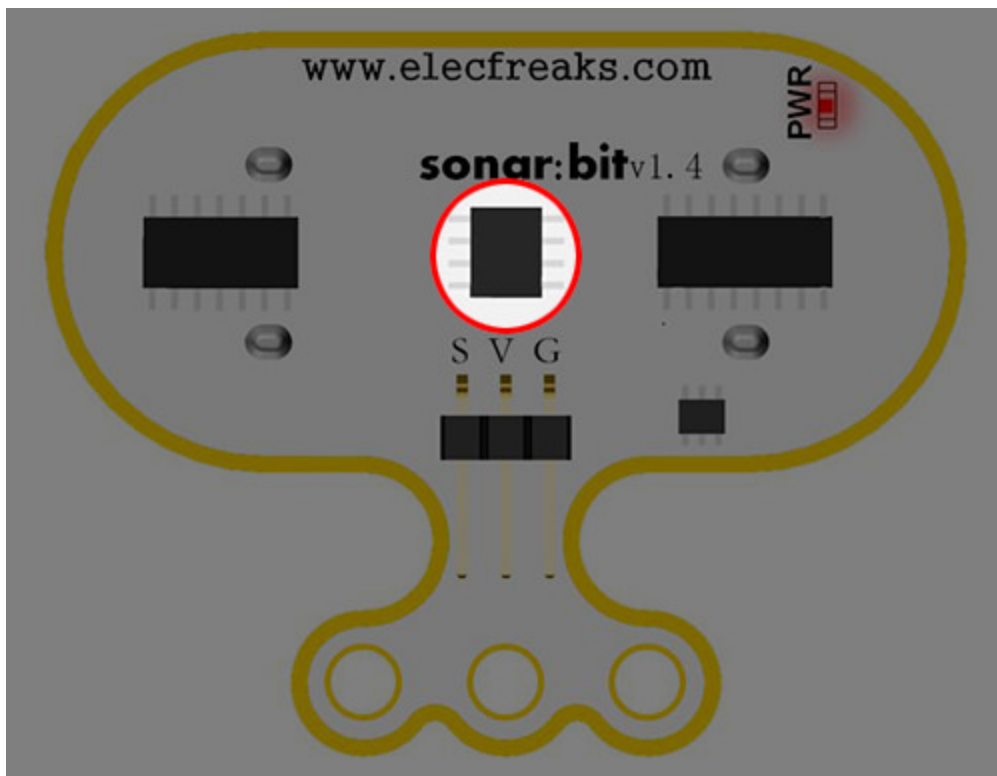
Transmitter is used to send ultrasonic signals.

Receiver



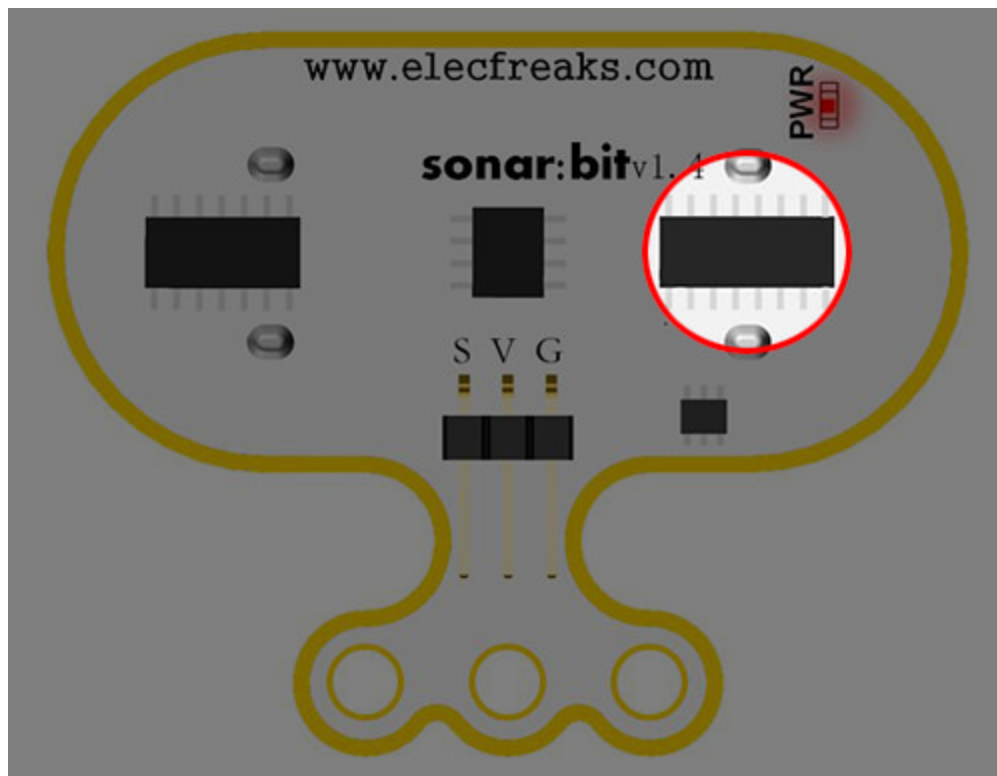
Receiver is for collecting ultrasonic signals.

MCU



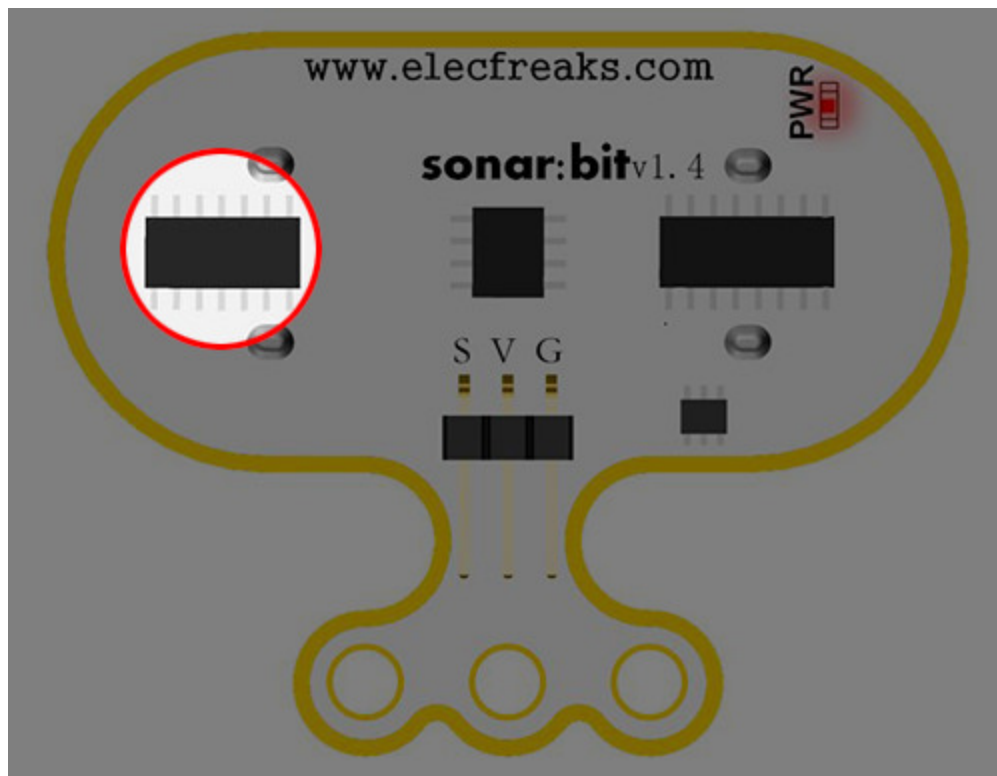
This is the master chip of sonar:bit.

Chip for Sending Signal



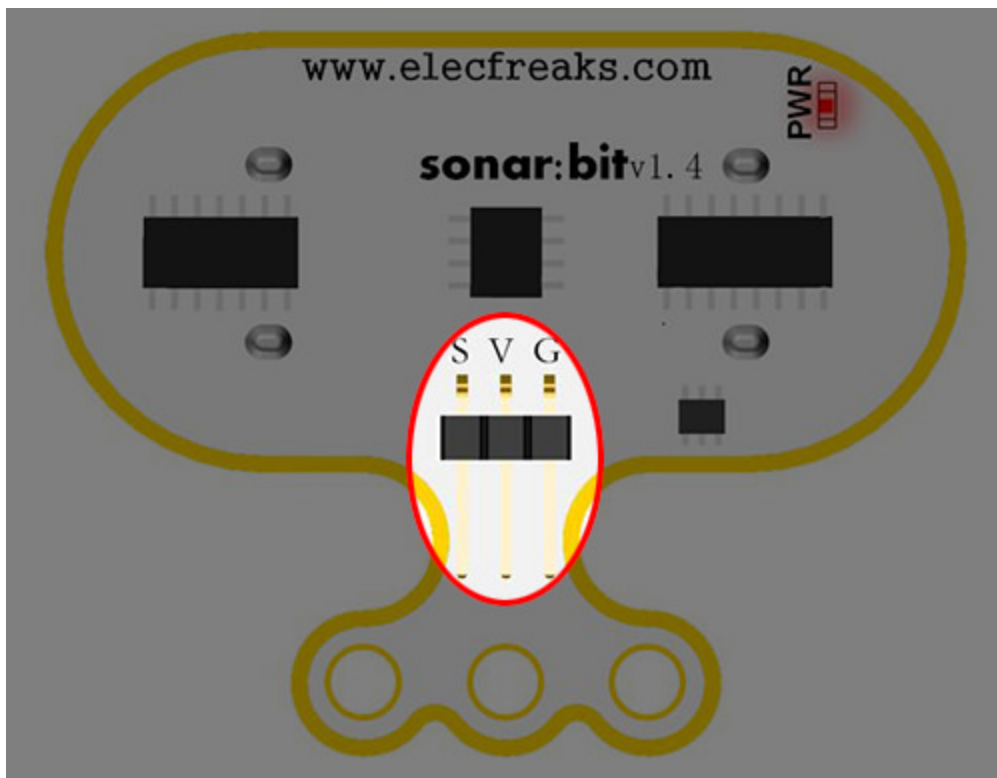
This chip is used to drive the transmitter to send out ultrasonic signals.

Chip for Receiving Signal



This chip is used to receive and process ultrasonic echo signals as well as give feedbacks to the master chip.

G-V-S Port



G-V-S port allows outer devices control.