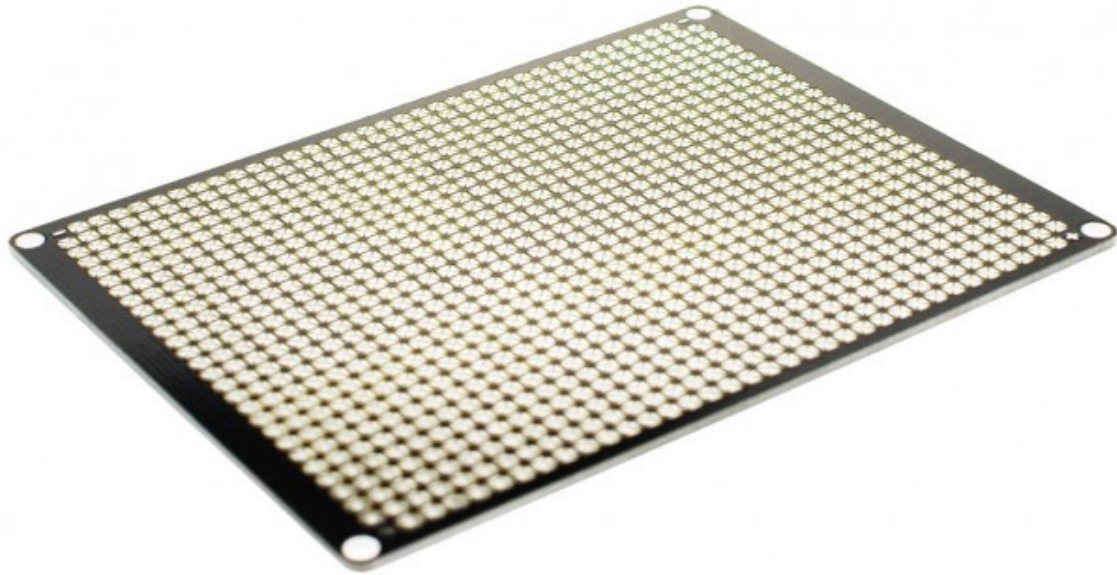


RB-Dfr-443
100x75mm ProtoBoard Double Sided



This is a very basic double sided prototyping board with standard 0.1" spacing with a 4x3mm holes for mounting. The leaf pads makes you great for quickly prototyping stackable circuits. You can not only solder DIP components but also solder SMD components. You can solder the digital & analog IO pins and plug it into Arduino,so that the proto board can directy communicate with Arduino like a simple shield.

Specifications

- Compatibility: DIP & SMD components
- Mounting Holes: 3mm x4
- Size: 100 x 75mm