

RB-Dfr-38 DFRobot Sound Sensor

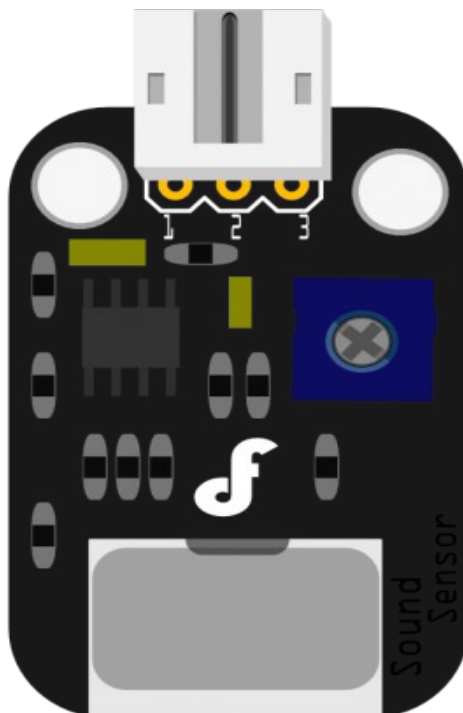


This small breakout board couples a small electret microphone with a 100x opamp to amplify the sounds of voice, door knocks, etc loud enough to be picked up by a microcontroller's Analog to Digital converter.

Pin Definition

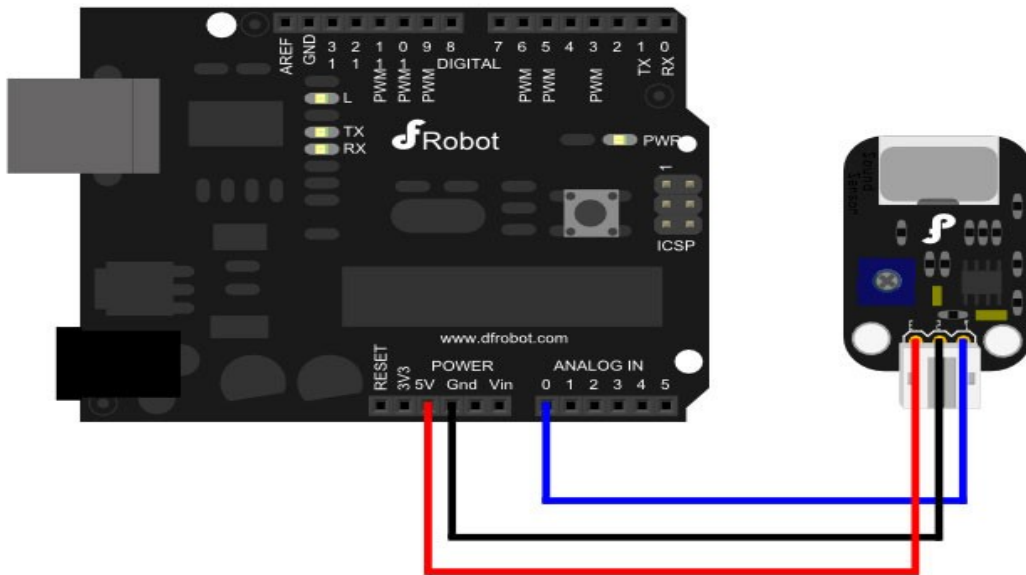
The definition of sound sensor pin is

- 1.Signal Output
- 2.GND
- 3.Power



Analog Sensor Pin Definition

Connection Diagram



Sample Code

```
void setup()
{
  Serial.begin(9600); // open serial port, set the baud rate to 9600 bps
}
void loop()
{
  int val;
  val=analogRead(0); //connect mic sensor to Analog 0
  Serial.println(val,DEC);//print the sound value to serial
  delay(100);
}
```