

RB-Dfr-25

DFRobot Ambient Light Sensor



The DFRobot Ambient Light Sensor works with Cds Photoresistor and allows you to have a DC Voltage output depending on the brightness of lights. Dark has a low value. The sensor can be used to detect the intensity of ambient light.

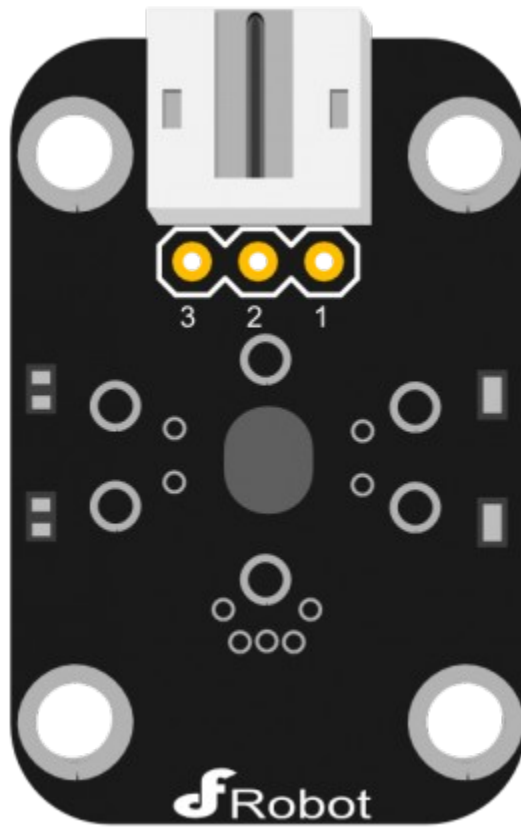
Specification

- Detects ambient light density
- Works with Cds Photoresistor
- Analog voltage output: 0 to 5 Vdc
- Suitable supply voltage: +3 to 5Vdc
- Interface with microcontrollers and logic circuits
- Standard 3-pin PCB connector
- Analog sensors
- Uses PH 2.0 socket
- Special sensor with Arduino expansion boards

Pin Definition

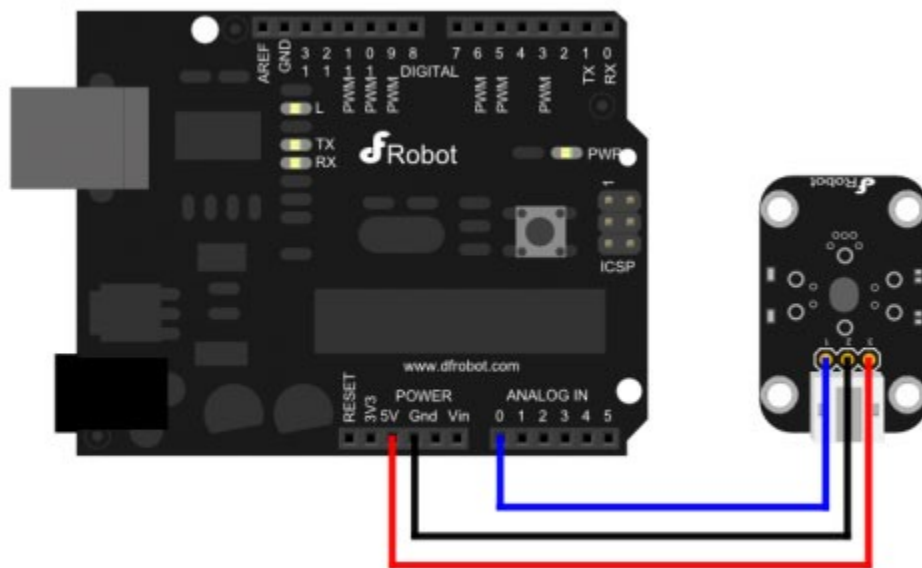
The definition of ambient light sensor pin is:

- Signal Output
- GND
- Power



Analog Sensor Pin Definition

Connection Diagram



Analog sensor connection diagram

Sample Code

```
void setup()
{
  Serial.begin(9600); // open serial port, set the baud rate to 9600 bps
}
void loop()
{
  int val;
  val=analogRead(0); //connect grayscale sensor to Analog 0
  Serial.println(val,DEC);//print the value to serial
  delay(100);
}
```