

CR-10 Series 3D Printer

Guide Book

To make Top-quality 3D printer
To be the Chief Evangelist

- This guide is for the CR-10 Series of 3D printers. It is also applicable for the CR-10S/CR-10 S4/CR-10 S5.
- Among them, CR-10 mini without T-Bracket (Right) & Decoration Strip.
- Due to the different types of device in the hardware and software upgrade industry, the products are slightly different and it is a normal phenomenon. Subject to actual product received.
- Detailed instructions for use are available on the SD card.



Notes

1. Do not use the Printer in any other way than described herein to avoid personal injury or property damage.
2. Do not place the Printer near flammables, explosives or heat sources. It is best to place it in a well-ventilated, low-dust environment.
3. Do not expose the Printer to violent vibration or any unstable environment. This will cause poor print quality.
4. The filaments recommended by the manufacturer are preferred as to avoid clogging in the extrusion head or Printer damage.
5. Do not use any other power cable except the one supplied. Use a grounded three-prong power outlet.
6. Do not touch the nozzle or hot bed during printing. Keep hands away from machine while in use to avoid burns or personal injury.
7. Do not wear gloves or loose clothing when operating the Printer. Preventing the movable parts from being involved in the squeeze or cutting injury to human body or printer damage.
8. Clean off filament from the nozzle tip with the provided pliers before the nozzle cools. Do not touch the nozzle directly. This can cause personal injury.
9. Clean the Printer frequently. With the machine powered off, clean the printer body with a dry cloth to remove dust, adhered printing materials and foreign objects on guide rails. Use glass cleaner or isopropyl Alcohol to clean the print surface before every print for consistent results.
10. Children under 10 years of age should not use the Printer without supervision.

Contents

| | | | |
|----------------------------|---|-------------------------------|----|
| 1. Introduction | 1 | 6. Bed Leveling..... | 8 |
| 2. Package Contents | 2 | 7. Software Installation..... | 9 |
| 3. Device Installion..... | 3 | 8. Preparing to Print..... | 10 |
| 4. Screen Information..... | 6 | 9. Trouble-shooting..... | 11 |
| 5. Loading Filament..... | 7 | 10. After-Sales Services..... | 12 |

Preface

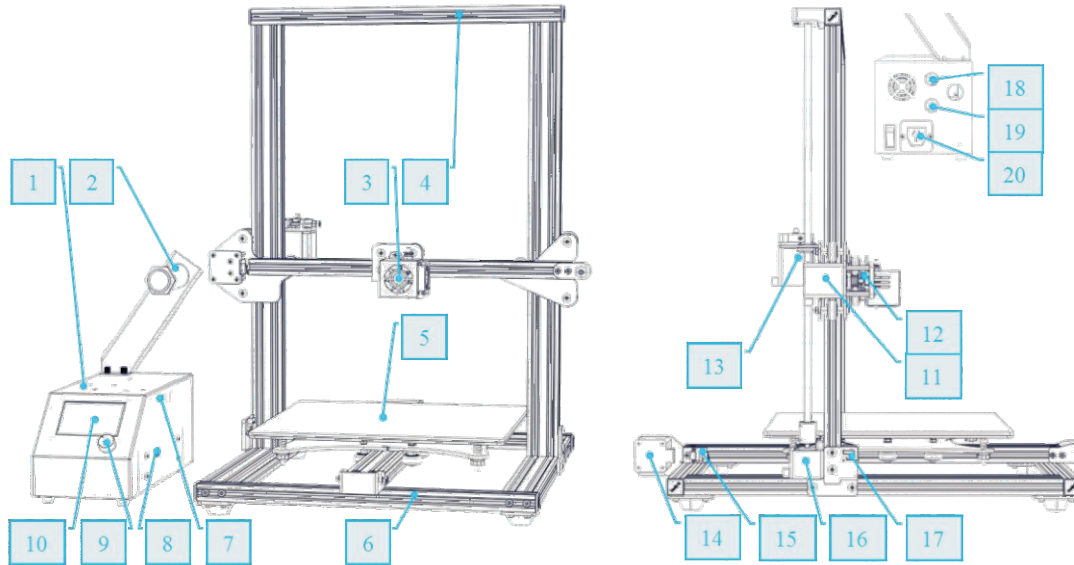
Dear consumers,

Thank you for choosing our products. For the best experience, please read the instructions before operating the Printer. Our 3D team is always ready to provide you with assistance. Please contact us via the phone number or e-mail address provided at the end when you encounter any problem with the Printer.

For a better experience in using our product, you may learn how to use the Printer in the following ways:

1. View the accompanied instructions and videos on the SD card.
2. Visit our official website at www.creality3d.cn. You will find relevant software/hardware information, contact details and operation and maintenance instructions on the website.

1. Introduction



- | | | | |
|--------------------|-------------------------|--------------------------|--------------------------------|
| 1. Control Box | 6. Base Frame | 11. X Stepper | 16. Z Stepper |
| 2. Spool Holder | 7. SD Slot and USB Port | 12. X Limit Switch | 17. Z Limit Switch |
| 3. Nozzle Assembly | 8. Voltage Selection | 13. Extruder (E) Stepper | 18. Nozzle Assembly Connection |
| 4. Z Gantry Frame | 9. Control Knob | 14. Y Stepper | 19. Hot Bed Connection |
| 5. Print Surface | 10. Display Screen | 15. Y Limit Switch | 20. Power Cable Connection |

2. General List



Base Frame



Gantry Frame



Control Box



Tool Kit

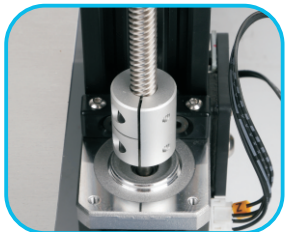


Tool List

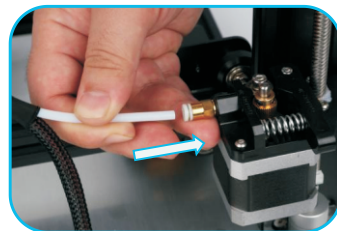
| No. | Image | Name | Qty | No. | Image | Name | Qty | No. | Image | Name | Qty |
|-----|-------|-------------------------------------|-----|-----|-------|----------------------------|--------|-----|-------|----------------------------------|----------|
| 1 | | Spool Holder w/ Nuts | 1 | 7 | | M5X25 Bolt and Lock Washer | 4 sets | 13 | | Scraper | 1 |
| 2 | | Spool Holder Bracket | 1 | 8 | | Power Cable | 1 | 14 | | Diagonal Pliers | 1 |
| 3 | | Sample Filament (200g) | 1 | 9 | | USB Cable | 1 | 15 | | Hex keys, Wrench and Screwdriver | 1 set |
| 4 | | Thumb Screws | 3 | 10 | | SD Card and Card Reader | 1 | 16 | | Cable Ties | 1 bundle |
| 5 | | T-Bracket (Right) | 1 | 11 | | PTFE Tubing (spare part) | 1 | 17 | | Spare Parts | 1 |
| 6 | | T-Bracket and Z Limit Switch (Left) | 1 | 12 | | Nozzle Cleaner | 1 | 18 | | Decorative Trim | 1 |

3. Device Installation

Install the Gantry Frame

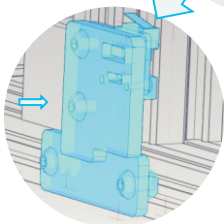
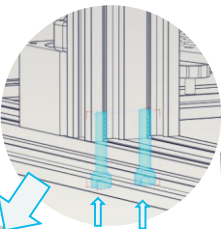


Attach the Z Couplers

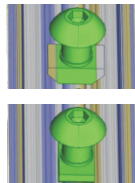
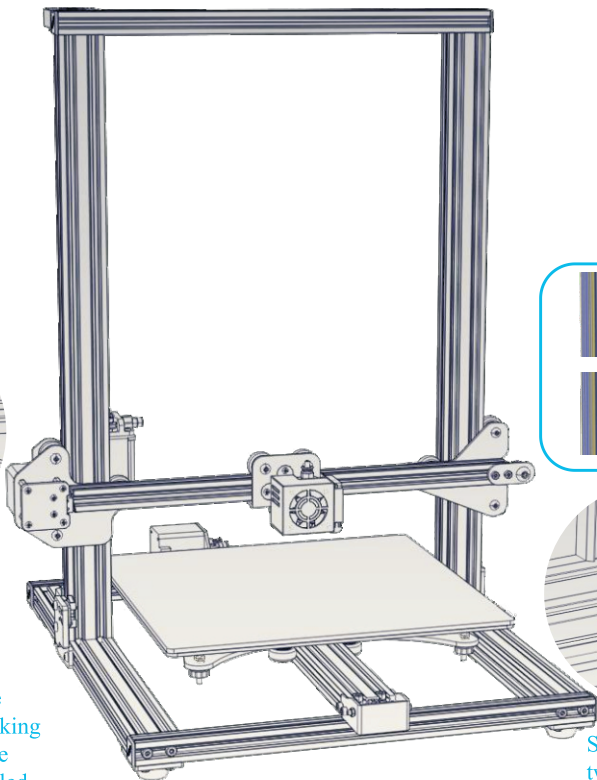


Insert the Teflon pipe into the quick connector

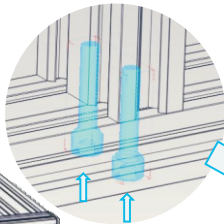
Screw in and fasten two M5X25 Bolts



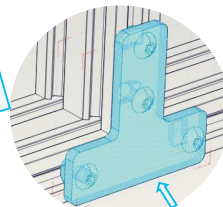
Install left side T-Bracket, making sure T-Nuts are properly installed.



Note: Make sure that the nut for profile has been turned by 90° before fastening the T-shaped fixing block.

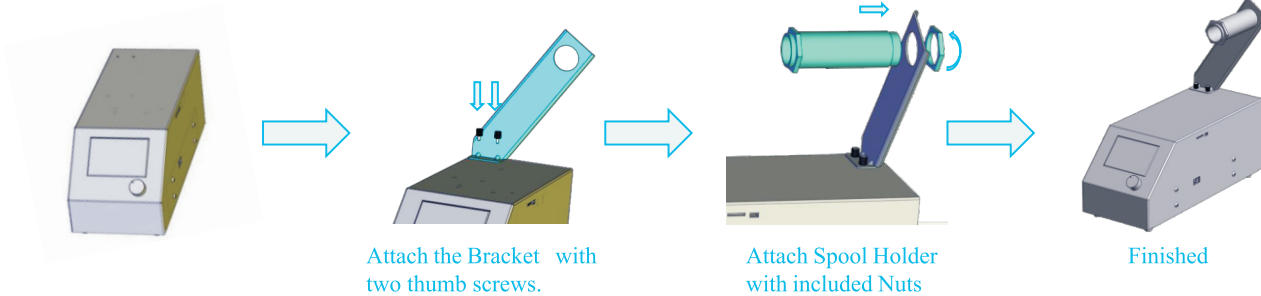


Screw in and fasten two M5X25 Bolts



Install right side T-Bracket

◆ Install the Spool Holder and Bracket



◆ Install the Decorative Trim



Install the Decorative Trim into the notch, starting from one end.



Cut off the excess material with the diagonal pliers

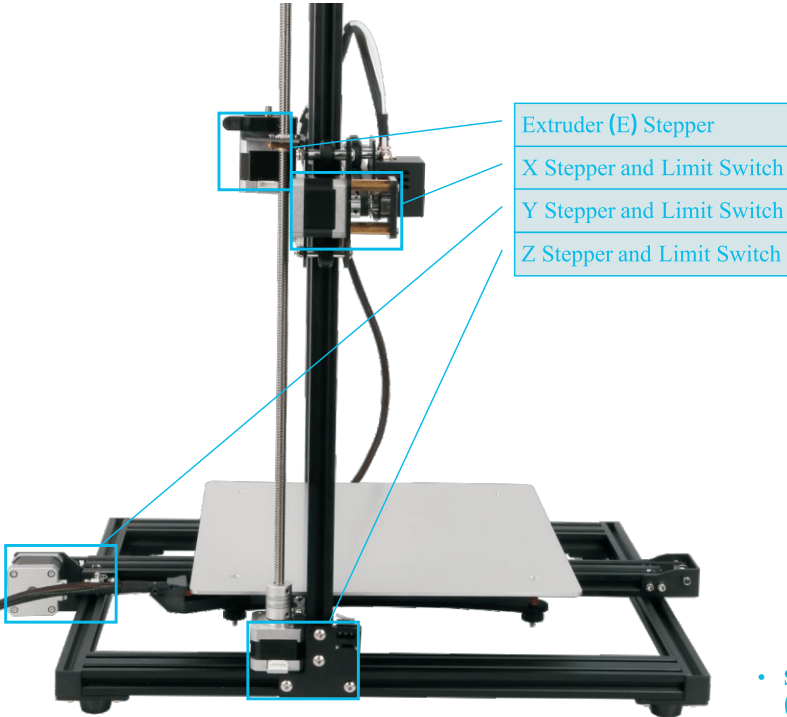


Attach the Decorative Trim to all parts needing to be decorated.

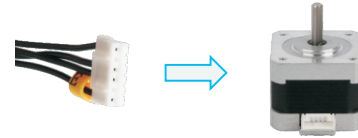
* The Decorative Trim is available in various colors. The pictures above are for reference only.

* CR-10 mini without Decoration Strip.

◆ cable connection



Now your 3D printer is assembled!



Connect the Stepper Motors according to the yellow labels on the 6pin (4-wire) side.



Connect the Limit Switches according to the yellow labels on the 3pin (2-wire) side.



Connect the aviation connectors to the ports with corresponding pins

- Select the correct input voltage to match your local mains (220V or 110V)
- Damage can occur if voltage is set incorrectly
- Make sure the power cable is connected.

4. Screen Information

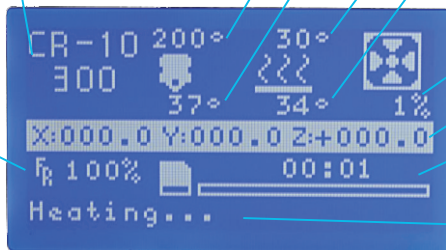
Information Displayed



Push: OK/Enter Sub Menu
Turn: Change Option/Value

Print speed

Device Model



Set temperature of the Nozzle

Current temperature of the Nozzle

Set temperature of the Hot Bed

Current temperature of the Hot Bed

Part Cooling Fan Speed

Current location of the nozzle

Print time

Print progress

Prompt message

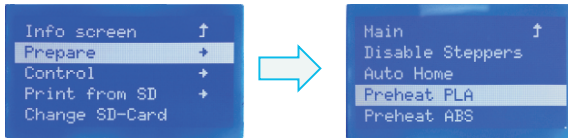
Screen Options

| Menu | Sub Menu | Explanation |
|-------------------------------|------------------|--|
| ↑Info Screen↑ | ↑main↑ | Return |
| Prepare→ | Disable Steppers | Moving X Y Z axis by your hands |
| | Auto Home | return to the origin |
| | Preheat PLA | |
| | Preheat ABS | |
| | Cooldown | Close and cooldown the nozzle |
| Control→ | Move Axis→ | Moving X Y Z axis or Extruder by given value. |
| | Temperature→ | Heat the nozzle and the bed or change fan speed by given value |
| | Restore Failsafe | Restore factory setting |
| No card /Print from SD | | Select the printing model |
| Init. SD-Card /Change SD-Card | | download or update the memory card information |
| Printing | | |
| Tune→ | Speed | Change Printing Speed by given value |
| | Nozzle | Change the temperature by given value |
| | Bed | Change the temperature by given value |
| | Fan Speed | Change Fan Speed by given value |
| | Flow | Change filament flow by given value |
| Pause Print | | |
| Stop Print | | |

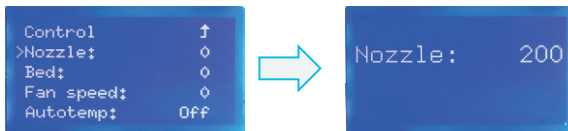
5. Loading Filament

1. Preheat

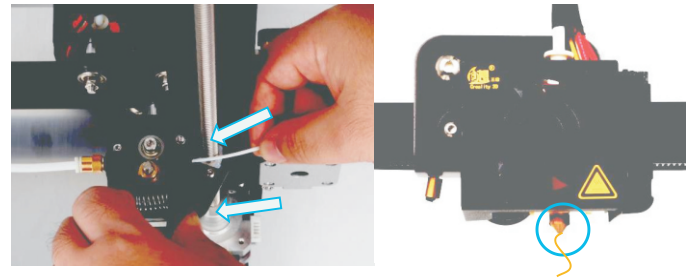
Method 1



Method 2



2. Feeding



Press and hold the extruder lever then insert 1.75mm filament through the small hole of the extruder. Continue feeding until you see filament come out the nozzle.

Tip: How to Replace the Filament ?

- 1、Cutting filament near the Extruder and slowly feed new filament until they are fed into the new filament.
- 2、Preheating the nozzle and withdraw the filament quickly and feed the new filament.

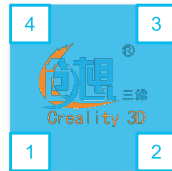
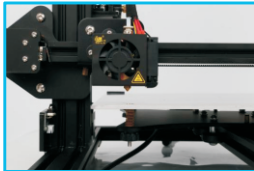
6. Bed Leveling



1. Prepare → Auto Home. Wait for the nozzle to move to the left/front of the platform.



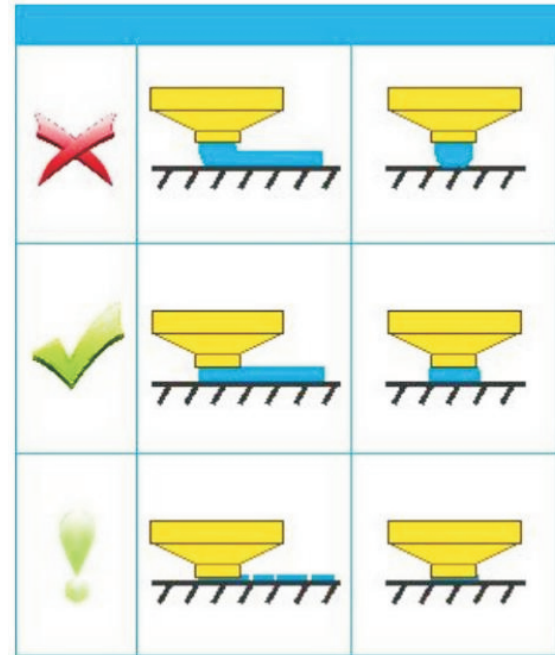
2. Prepare → Disable Steppers (Close stepper drive, release motor)



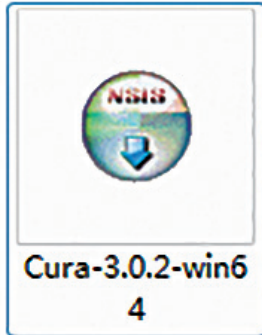
3. Move the nozzle to the front/left leveling screw and adjust the platform height by turning the knob underneath. Use a piece of A4 paper (standard printer paper) to assist with the adjustment, making sure that the nozzle lightly scratches the paper.

4. Complete the adjustment of the screw on all 4 corners.

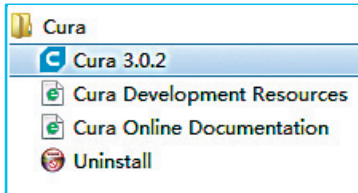
5. Repeat above steps 1-2 times if necessary.



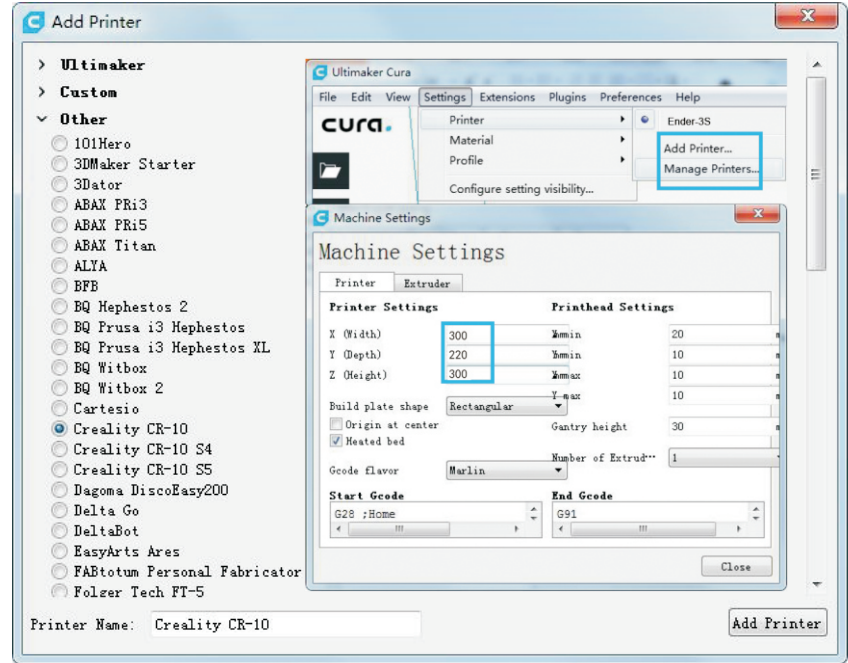
7. Software Installation



1. Double click the Cura icon to install the Cura Slicing Software.



2. Start Cura 3.0.2 from the Start Menu.



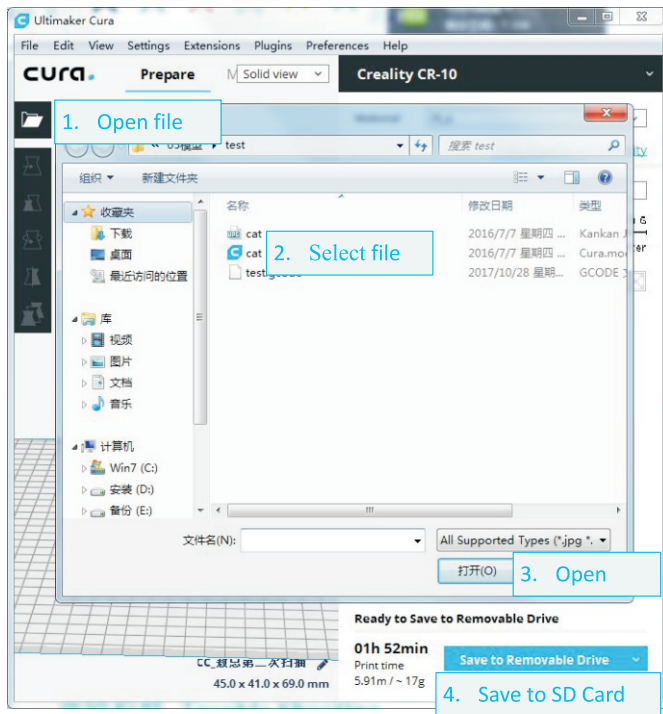
3. Select Other→Creality CR-10→Add Printer.

4. If your machine model is CR-10Mini, Please select setting→printer→manage printer and modify the printer settings to (300,220,300)

8. For the first Printing

1. Slicing

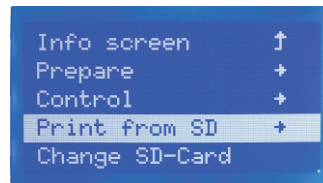
Insert SD card into computer with Reader.



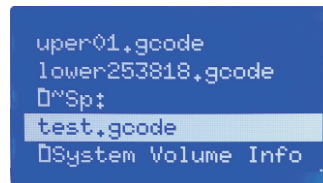
2. Printing



Insert the SD card

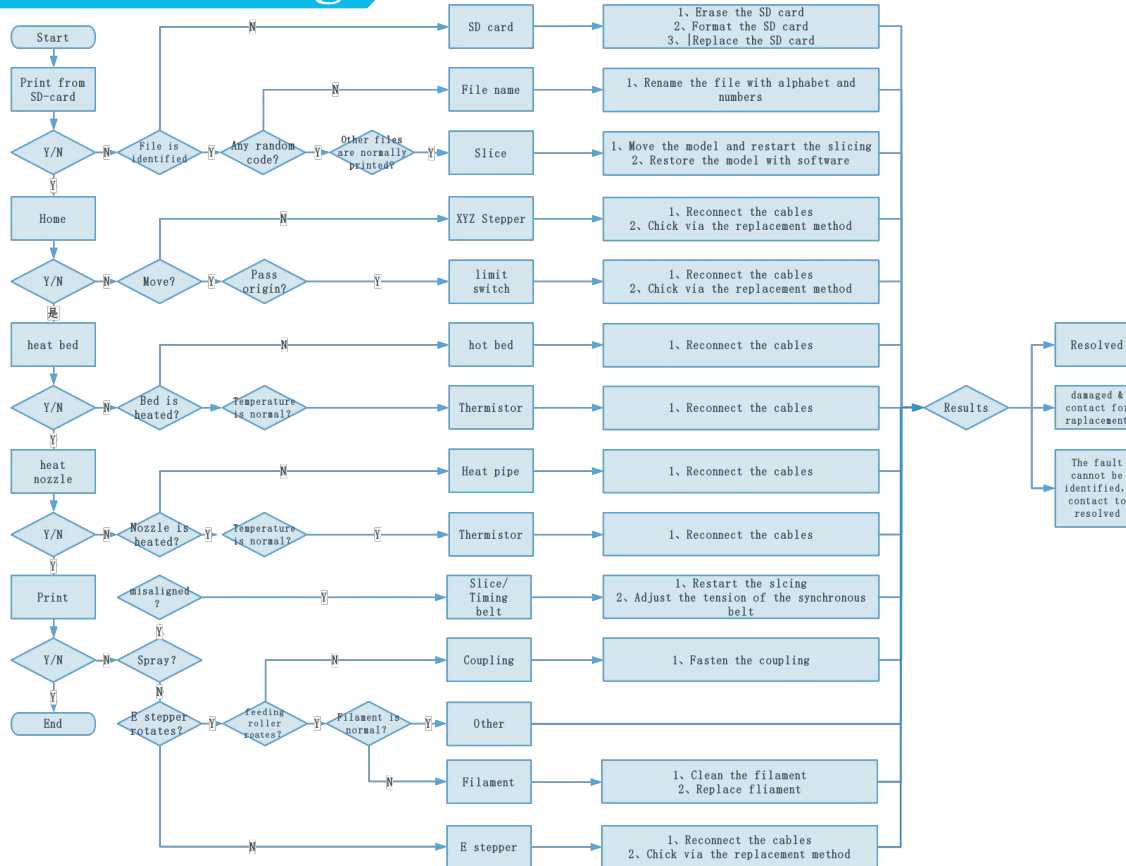


Select "Print from SD"



Select the file to be printed

9. Trouble shooting



10. After- Sales Service

After-Sales Service Terms

- 1.We provide a 12-month warranty on 3D printers (excluding the nozzle assembly) purchased on or after January 1, 2017 and a 3-month warranty on the nozzle assembly thereof. Products purchased before January 1, 2017 whose warranty periods have not expired are subject to the original warranty terms.
- 2.The warranty period of each product starts from the date of production. Any product with renewed warranty period is subject to the renewed warranty terms.
- 3.Within the warranty period, we will provide free accessories to replace those damaged during the operation in accordance with the instructions for use which are not caused by user negligence (determined by our professional assessment).
- 4.We will continue to provide warranty services for any product having been repaired as long as its warranty period has not expired.
- 5.In case of any problem, you may find the solutions in the instructions for use or search for the solutions on our official website (www.cxsw3d.com) or contact us via phone or email.
- 6.We provide free remote technical support for every consumer during the service life of the product. You may request solutions from our after-sales team via phone or email within working hours. For any request submitted beyond the normal working hours, we will reply as soon as possible.
- 7.Please provide completed after-sales service card or S/N number when applying for the warranty service. Otherwise, warranty services may be refused.
- 8.We are entitled to refuse warranty claims for any fault or damage due to failure to follow instructions for use, including but not limited to (i) unauthorized modification; (ii) incorrect installation or use; (iii) use of any third-party component; (iv) use of any non-specified software; (v) use of low-quality filament; (vi) use under non-specified environment; and (vii) misuse (overload) or improper maintenance (corrosion or oxidation).
- 9.We are entitled to refuse to provide warranty services for any fault or damage due to force majeure, including but not limited to fire, earthquake, lightning stroke, flood, violent conflict, etc.
- 10.We provide after-sales services between 8:30 and 21:30 every day from Monday to Saturday, except official holidays.

After-sales Service Card

Product Name:_____Purchase Date:_____

S/N No.:_____Purchased Channel:_____

Fault description:_____

User Name:_____

User Tel:_____

User Email:_____

Return Address:_____



Shenzhen Creality 3D Technology CO.,LTD.

After-Sales Service Tel: 400-6133 882

Official Website : www.creality3d.cn

Company Address : 12F, Building No.3, Jinchengyuan Industrial Area, Huafan Road,
Dalang, Longhua, Shenzhen, Guangdong Province