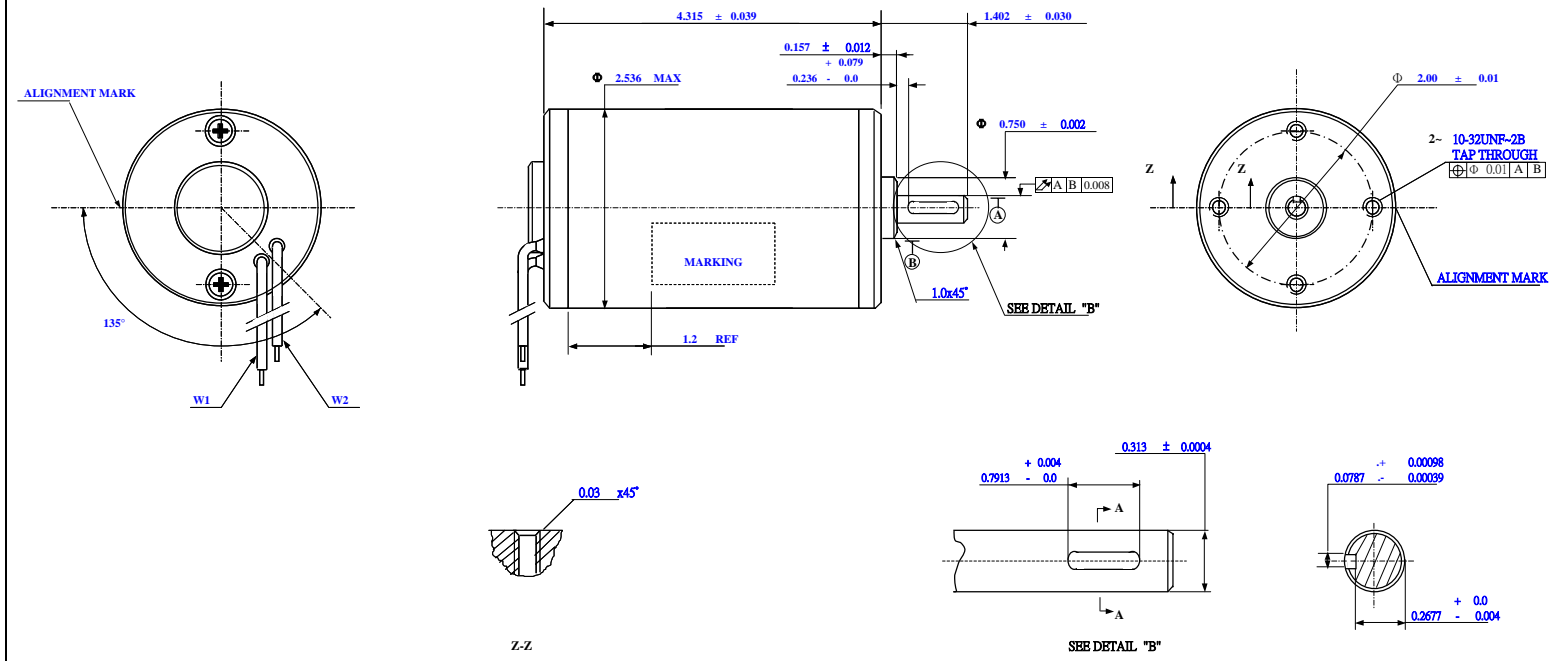
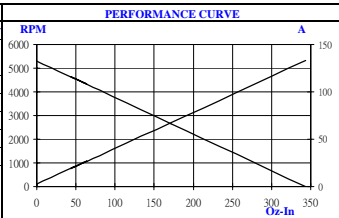


MODEL NO.	FR801-001	CUSTOMER P/N	ISSUED BY	CIM	ISSUED TO	FIRST ROBOTICS	DATE	10/13/2004
-----------	-----------	--------------	-----------	-----	-----------	----------------	------	------------

50%



TYPICAL PERFORMANCE @ 12 Vdc					
	TORQUE	SPEED	CURRENT	POWER	EFF. CY
	Oz-In	RPM	A	Wo	%
FREE LOAD	0	5310	2.7	0	0%
NORMAL LOAD	64.0	4320	27	205	63%
@MAX EFFICIENCY	45.0	4614	19.8	154	65%
@MAX POWER	171.7	2655	67.9	337	41%
@STALL	343.4	0	133.0	0	0%

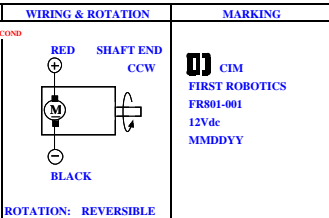


GENERAL FEATURES			
(1) LEAD WIRE: AWG#14	UL#1015,105	LENGTH	STRIP LENGTH
W1	18.0 ± 0.5	0.5 ± 0.04	RED
W2	18.0 ± 0.5	0.5 ± 0.04	BLACK
(2) FINISHING: HOUSING POWDER GLOSS BLACK COAT			
(3) END-PLAY: 0.005 ~ 0.02			
(4) CONSTRUCTION: TENV.			

SPECIAL FEATURES

1) DUTY CYCLE: INTERMITTENT, CCW 3 MINUTES ON 2 SECOND
CW 3 MINUTES ON 30 MINUTES @ 64.0 OZ-IN.

2) LIFE: 1000 CYCLES MINIMUM.



CUSTOMER APPROVAL			
FIRST ROBOTICS			
APPROVAL :			
DATE :			

UNSPECIFIED TOLERANCE		
DECIMAL	ANGLE	
2 PLACE	3 PLACE	
± 0.008	± 0.005	± 1°
DESIGNED	QI, JX	8/9/2002
DRAWN	QI, JX	8/9/2002
CHECKED		
APPROVAL		

UNIT	INCH	REV.	B
TITLE	MOTOR SPECIFICATIONS		
MODEL NO.	FR801-001		
DRAWING NO.	CAD- FR1-01A		
CUSTOMER P/N			
SERIES	2510BA08ZZa		
CCL Industrial Motor Limited (CIM) 捷和工業電機有限公司			

NO.	REVISIONS	DRAWN	CHECKED	DATE	NO.	REVISIONS	DRAWN	CHECKED	DATE
B1	from 0.0789±0.00047.rev to B	s b Bu	JQ.He	10/13/04					
B	Keyway width changed to 0.0789±0.00098±0.00039	s b Bu	JQ.He	10/13/04					
A	Rejigger key form.rev. to A.	HANL	JQ.He	8/9/04					