

Smart Panlee

Smart Serial LCD Module

ZX4D30NE01S-UR-4827



Features:

1. Support rapid prototyping

Core Materials (Table 0):

No.	Name	Model	Remark
1	ESP32 module	WT32-S3-WROVER-N16R8	
2	LCD module	ZX3D50C4832I	
3			

Hardware Interface:

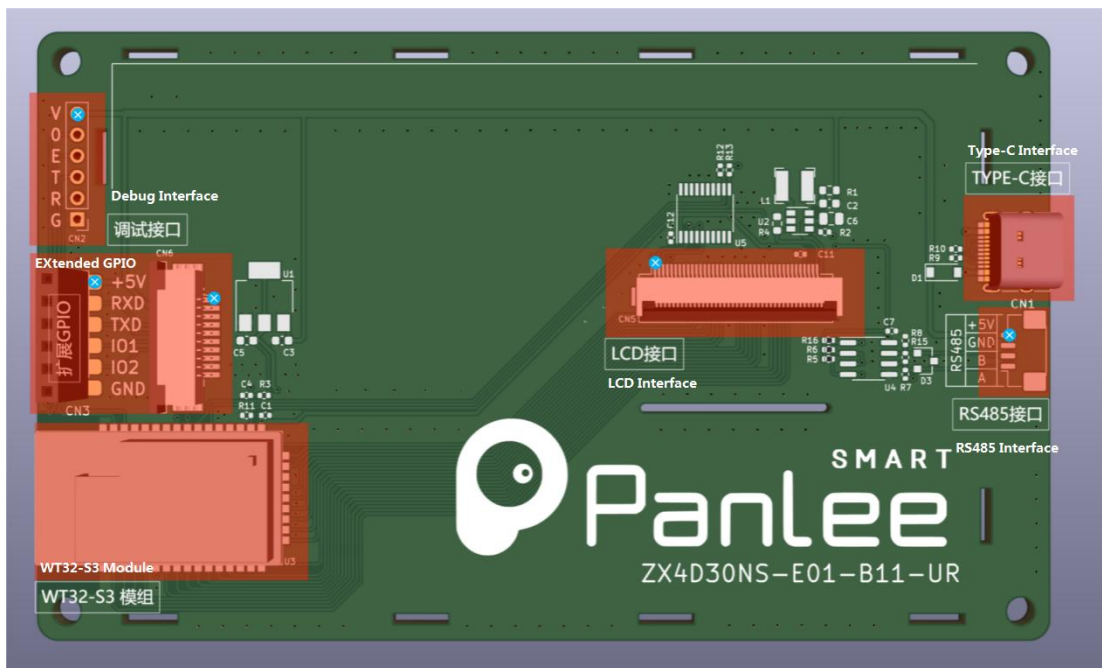


Fig.1 Hardware Interface

Interface Description:

[1] Debug Interface (Table 1)

Pin	Description	Module Pin	Voltage Range	Remark
1	+5V	-	5V	
2	IO0	IO0	3.3V	
3	ESP_EN	EN	3.3V	
4	ESP_TXD	TXD	3.3V	
5	ESP_RXD	RXD	3.3V	
6	GND			

[2] Extended IO Interface (Table 2)

Pin	Description	Module Pin	Voltage Range	Remark
1	+5V	-	5V	
2	ESP_RXD	RXD0	3.3V	Serial port
3	ESP_TXD	TXD0	3.3V	
4	IO1	1	3.3V	Extended GPIO
5	IO2	2	3.3V	
6	GND	GPIO 13		

[3] RS485 Interface (Table 3)

Pin	Description	Remark
1	RS485-A	RS485 bus
2	RS485-B	
3	GND	
4	+5V	

[4] LCM Interface (Table 4)

Description	Module Pin	Remark
LCD-R3	4	RGB data
LCD-R4	5	
LCD-G	6	
LCD-R6	7	
LCD-R7	15	
LCD_G2	16	
LCD_G3	17	
LCD_G4	18	
LCD_G5	8	
LCD_G6	3	
LCD_G7	46	
LCD_B3	9	
LCD_B4	10	
LCD_B5	11	
LCD_B6	12	
LCD_B7	13	
LCD_CLK	14	RGB clock
LCD_DISP	21	
LCD_HSYNC	47	Horizontal synchronization
LCD_VSYNC	48	Vertical synchronization
LCD_DE	40	
BL_EN	45	Backlight control, active high

Specification Parameters:

[1] Display Parameters (Table 5)

Display Type	LCD
Driver IC Model	ST7701
Viewing Angle	FULL
Resolution	480*272
Interface	RGB
Color	
Backlight Type	
Backlight Brightness	

[2] GPIO Interface Parameters (Table 6)

	Test Condition	Min	Typ	Max	Unit
GPIO Voltage Level	Output High, I _{out} = 4mA	3.0	3.3	-	V
	Output Low, I _{out} = -4mA	-	0	0.3	V
	Input High	2.4	3.3	3.3	V
	Input Low	0	-	0.5	V
	Baud Rate	3150~2500000bps, typical value: 115200bps			
Data Format	UART: N81/E81/O81/N82 4 modes (OS configuration)				
Interface Cable	8Pin MX1.25				

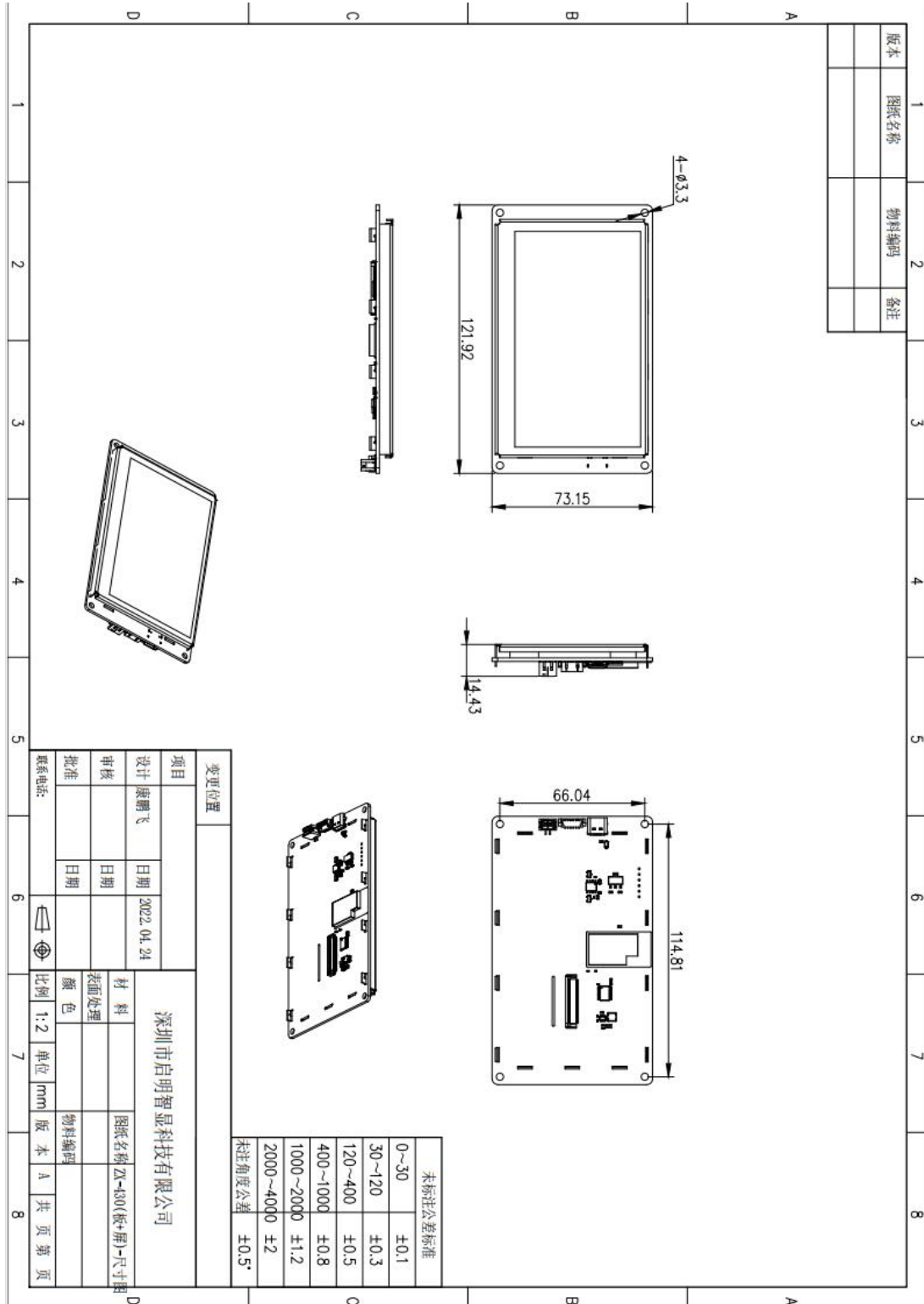
[3] Electrical Specifications (Table 7)

Parameter	Test Condition	Min	Typ	Max	Unit
Rated Power		4.7	5.0	5.5	V
Operating Voltage	USB provides 5V power, with maximum backlight brightness	170	175	190	mA

[4] Operating Environment (Table 8)

Operating Temperature	-20°C~70°C (5V @ 60% RH)
Storage Temperature	-30°C~80°C
Conformal coating	None
Operating Humidity	10%~90%RH, typical value: 60%RH

Outline Dimensional Drawing (Fig.2)



Contact Us

URL: <http://www.panel-tag.cn/>

E-mail: ami@smartpanle.com