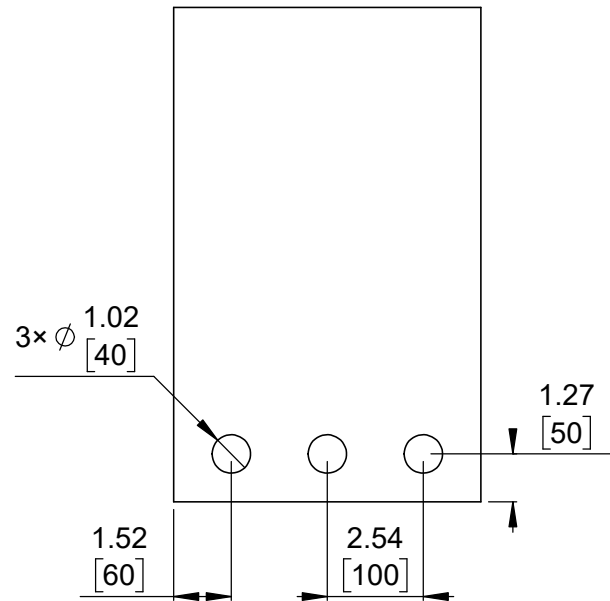
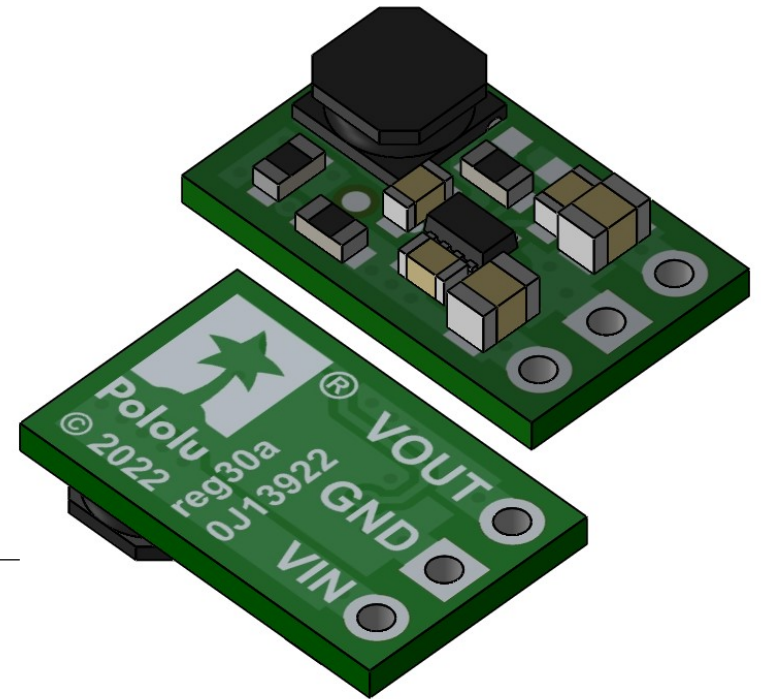


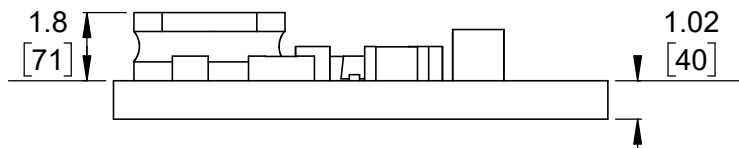
① Board dimensions (top view)
Scale 5:1



② Connector callouts (bottom view)
Scale 5:1



③ Isometric view
Scale 5:1




④ Profile
Scale 5:1



⑤ Actual size
Scale 1:1

1. To get the specified scale, select 100% in print settings.
2. Drill location tolerance: ± 0.1 [± 5].
3. Board edge tolerance: ± 0.3 [± 10].

<https://www.pololu.com/category/296>

Name: Step-Up Voltage Regulator U3V16Fx		Item number: 4940-4946
Drawing date: 18 November 2022	Dev code: reg30a	 © 2022 Pololu Corporation
Units: mm [mil]	Material: mixed	