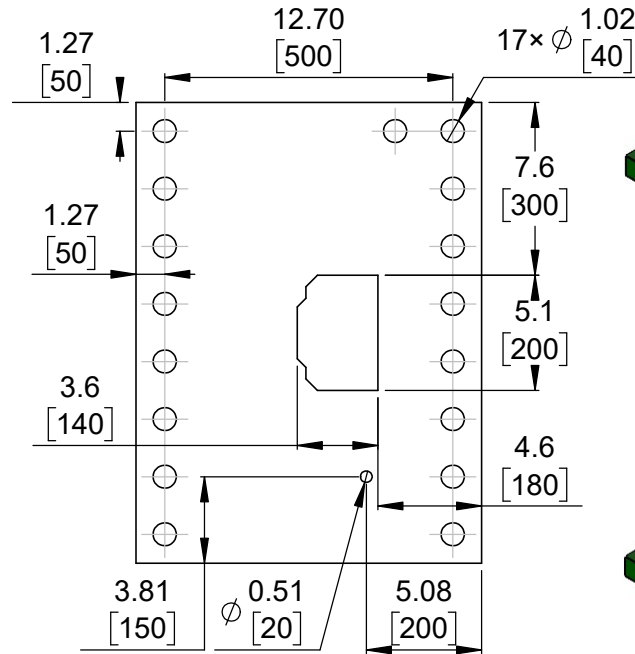
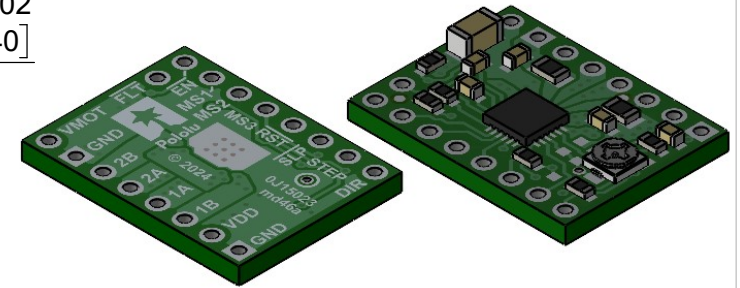


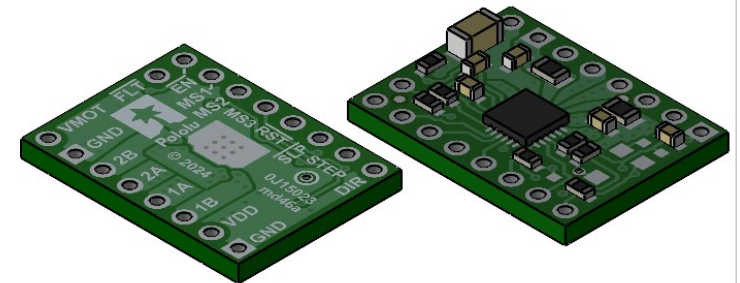
① Board dimensions (top view)
Scale 3:1



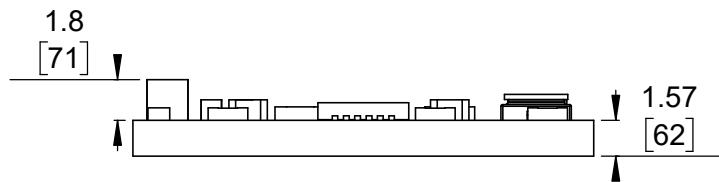
② Connector callouts (bottom view)
Scale 3:1



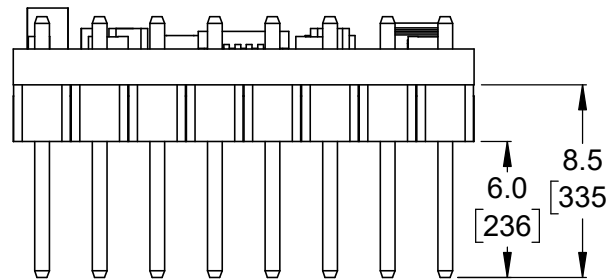
③ Isometric view (adjustable current)
Scale 2:1



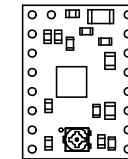
④ Isometric view (fixed current limit)
Scale 2:1



⑤ Profile
Scale 3:1



⑥ Profile with headers
Scale 3:1

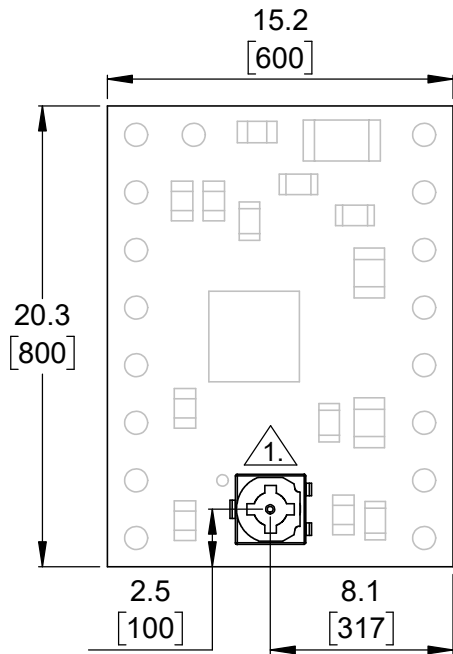


⑦ Actual size
Scale 1:1

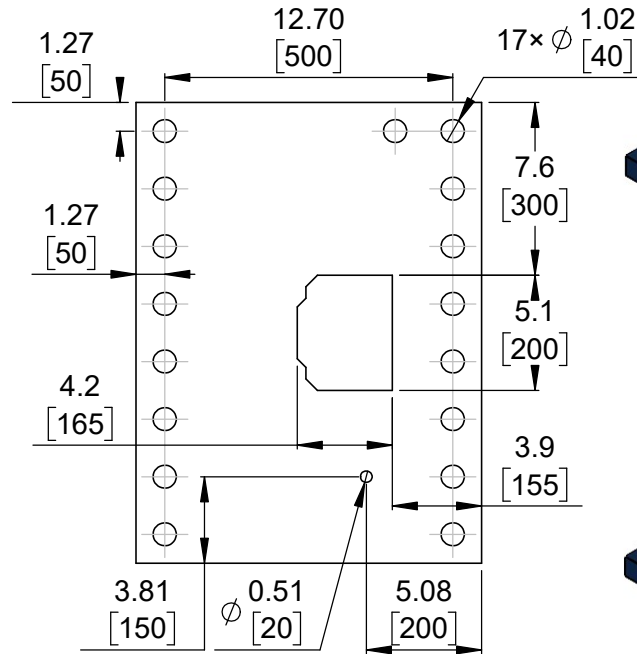
1. Potentiometer not populated on fixed current limit models.
2. Grid lines indicate 2.54 mm [100 mil] spacing.
3. To get the specified scale, select 100% in print settings.
4. Drill location tolerance: ± 0.1 [± 5].
5. Board edge tolerance: ± 0.3 [± 10].

<https://www.pololu.com/catalog/category/325>

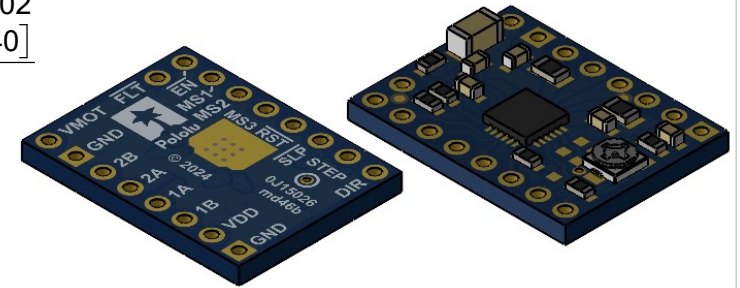
Name: A5984 Stepper Motor Driver Carriers		Item number: 5342, 5343, 5348-5351
Drawing date: 23 August 2024	Dev code: md46a	 © 2024 Pololu Corporation
Units: mm [mil]	Material: mixed	



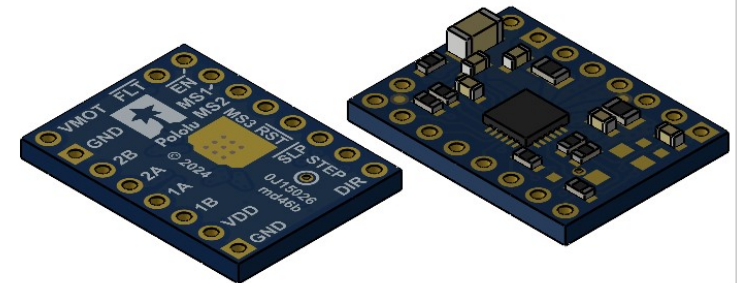
① Board dimensions (top view)
Scale 3:1



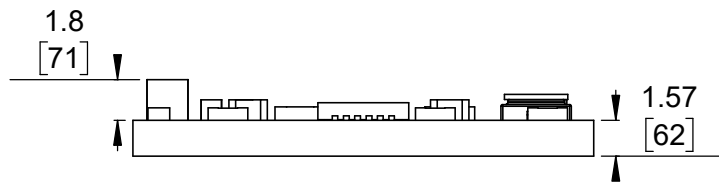
② Connector callouts (bottom view)
Scale 3:1



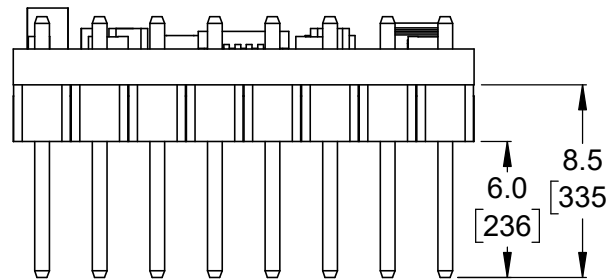
③ Isometric view (adjustable current)
Scale 2:1



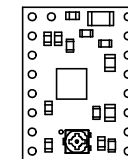
④ Isometric view (fixed current limit)
Scale 2:1



⑤ Profile
Scale 3:1




⑥ Profile with headers
Scale 3:1



⑦ Actual size
Scale 1:1

- 1. Potentiometer not populated on fixed current limit models.
- 2. Grid lines indicate 2.54 mm [100 mil] spacing.
- 3. To get the specified scale, select 100% in print settings.
- 4. Drill location tolerance: ± 0.1 [± 5].
- 5. Board edge tolerance: ± 0.3 [± 10].

<https://www.pololu.com/catalog/category/325>

Name: A5984 Stepper Motor Driver Carriers, Blue Edition		Item number: 5340, 5341, 5344-5347
Drawing date: 23 August 2024	Dev code: md46b	 © 2024 Pololu Corporation
Units: mm [mil]	Material: mixed	