

▶ LM-UU/LM-AJ-UU/LM-OP-UU



LM-UU
Standard type



LM-AJ-UU
Adjustable type



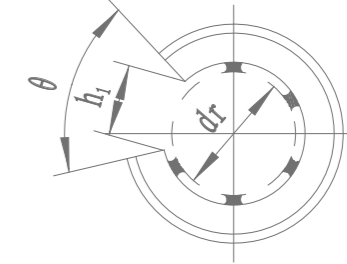
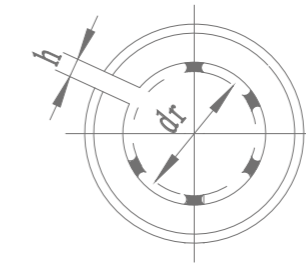
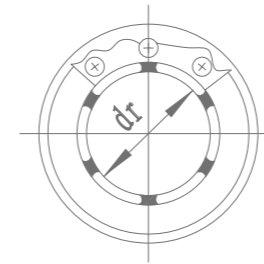
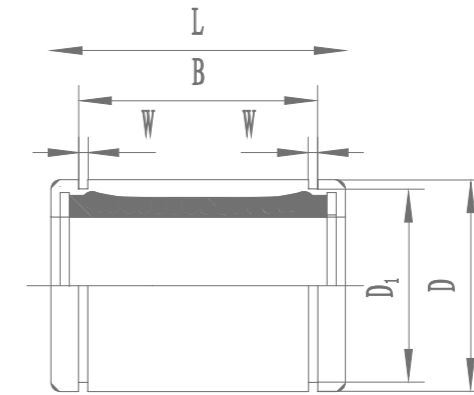
LM-OP-UU
Open type

型号说明
Model Specification

LM	AJ	OP	UU
直线轴承 Item	调隙 Adjustment	大开口 Open	密封 Seals

Nominal shaft diameter (Inch/mm)	Part Number									dr		
	LM	Ball circuit	weight(g)	LM-AJ	ball circuit	weight(g)	LM-OP	Ball circuit	weight(g)	mm	Tolerance(μm)	
											Precision	High
3	LM3-UU	4	1.35	-	-	-	-	-	-	3	0-5	0-8
4	LM4-UU	4	1.9	-	-	-	-	-	-	4	0-5	0-8
5	LM5-UU	4	4	-	-	-	-	-	-	5	0-5	0-8
6	LM6-UU	4	7.6	-	-	-	-	-	-	6	0-6	0-9
8	LM8S-UU	4	10.4	-	-	-	-	-	-	8	0-6	0-9
8	LM8-UU	4	15	-	-	-	-	-	-	8	0-6	0-9
10	LM10-UU	4	29.5	LM10-AJ-UU	4	29	LM10-OP-UU	3	23	10	0-6	0-9
12	LM12-UU	4	31.5	LM12-AJ-UU	4	31	LM12-OP-UU	3	25	12	0-6	0-9
13	LM13-UU	4	43	LM13-AJ-UU	4	42	LM13-OP-UU	3	34	13	0-6	0-9
16	LM16-UU	4	69	LM16-AJ-UU	4	68	LM16-OP-UU	3	52	16	0-6	0-9
20	LM20-UU	5	87	LM20-AJ-UU	5	85	LM20-OP-UU	4	69	20	0-7	0-10
25	LM25-UU	6	220	LM25-AJ-UU	6	216	LM25-OP-UU	5	188	25	0-7	0-10
30	LM30-UU	6	250	LM30-AJ-UU	6	245	LM30-OP-UU	5	210	30	0-7	0-10
35	LM35-UU	6	390	LM35-AJ-UU	6	384	LM35-OP-UU	5	335	35	0-8	0-12
40	LM40-UU	6	585	LM40-AJ-UU	6	579	LM40-OP-UU	5	500	40	0-8	0-12
50	LM50-UU	6	1,580	LM50-AJ-UU	6	1,560	LM50-OP-UU	5	1,340	50	0-8	0-12
60	LM60-UU	6	1,860	LM60-AJ-UU	6	1,820	LM60-OP-UU	5	1,610	60	0-9	0-15
80	LM80-UU	6	4,420	LM80-AJ-UU	6	4,300	LM80-OP-UU	5	3,650	80	0-9	0-15
100	LM100-UU	6	8,600	LM100-AJ-UU	6	8,540	LM100-OP-UU	5	7,200	100	0-10	0-20
120	LM120-UU	8	15,000	LM120-AJ-UU	8	14,900	LM120-OP-UU	6	11,600	120	0-10	0-20
150	LM150-UU	8	20,250	LM150-AJ-UU	8	20,150	LM150-OP-UU	6	15,700	150	0-13	0-25

▶ LM-UU/LM-AJ-UU/LM-OP-UU



Major dimensions and tolerance											Eccentricity		Radial clearance(Max) μm	Basic load rating		Nominal shaft diameter (mm)
D		L		B		W	D1	h	h1	θ	Precision (μm)	High(μm)		dynamic (CN)	static (Co N)	
mm	Tolerance (μm)	mm	Tolerance (μm)	mm	Tolerance (μm)	mm	mm	mm	mm	°						
7	0-9	10	0-120	-	-	-	-	-	-	-	4	8	-3	69	105	3
8	0-9	12	0-120	-	-	-	-	-	-	-	4	8	-3	88	127	4
10	0-9	15	0-120	10.2	0-200	1.1	9.6	-	-	-	4	8	-3	167	206	5
12	0-11	19	0-200	13.5	0-200	1.1	11.5	-	-	-	8	12	-3	206	265	6
15	0-11	17	0-200	11.5	0-200	1.1	14.3	-	-	-	8	12	-3	176	216	8
15	0-11	24	0-200	17.5	0-200	1.1	14.3	-	-	-	8	12	-3	274	392	8
19	0-13	29	0-200	22	0-200	1.3	18	1	6.8	80°	8	12	-4	372	549	10
21	0-13	30	0-200	23	0-200	1.3	20	1.5	8	80°	8	12	-4	510	784	12
23	0-13	32	0-200	23	0-200	1.3	22	1.5	9	80°	8	12	-4	510	784	13
28	0-13	37	0-200	26.5	0-200	1.6	27	1.5	11	80°	8	12	-6	774	1,180	16
32	0-16	42	0-200	30.5	0-200	1.6	30.5	1.5	11	60°	10	15	-6	882	1,370	20
40	0-16	59	0-300	41	0-300	1.85	38	2	12	50°	10	15	-6	980	1,570	25
45	0-16	64	0-300	44.5	0-300	1.85	43	2.5	15	50°	10	15	-8	1,570	2,740	30
52	0-19	70	0-300	49.5	0-300	2.1	49	2.5	17	50°	12	20	-8	1,670	3,140	35
60	0-19	80	0-300	60.5	0-300	2.1	57	3	20	50°	12	20	-10	2,160	4,020	40
80	0-19	100	0-300	74	0-300	2.6	76.5	3	25	50°	12	20	-13	3,820	7,940	50
90	0-22	110	0-300	85	0-300	3.15	86.5	3	30	50°	17	25	-13	4,700	10,000	60
120	0-22	140	0-400	105.5	0-400	4.15	116	3	40	50°	17	25	-20	7,350	16,000	80
150	0-25	175	0-400	125.5	0-400	4.15	145	3	50	50°	20	30	-20	14,100	34,800	100
180	0-25	200	0-400	158.5	0-400	4.15	175	3	85	80°	20	30	-25	16,400	40,000	120
210	0-29	240	0-400	170.6	0-400	5.15	204	3	105	80°	25	40	-25	21,100	54,300	150