

Datasheet:



AMPLIFIED SPEAKER 2

V2A - 2023-10-17

The MonkMakes Amplified Speaker 2 is an easy to use amplified speaker on a PCB.

The board needs a 3.3 to 6V power supply that can be provided by a Raspberry Pi or Arduino. Audio input will normally be to the 3.5mm stereo audio jack socket, which is mixed to a mono signal as there is just a single speaker on the board.

The board also has header pins that provide a line in and low-pass filtered inputs, for use with PWM audio.



Absolute Maximum Ratings

		Units
Supply voltage	6	V

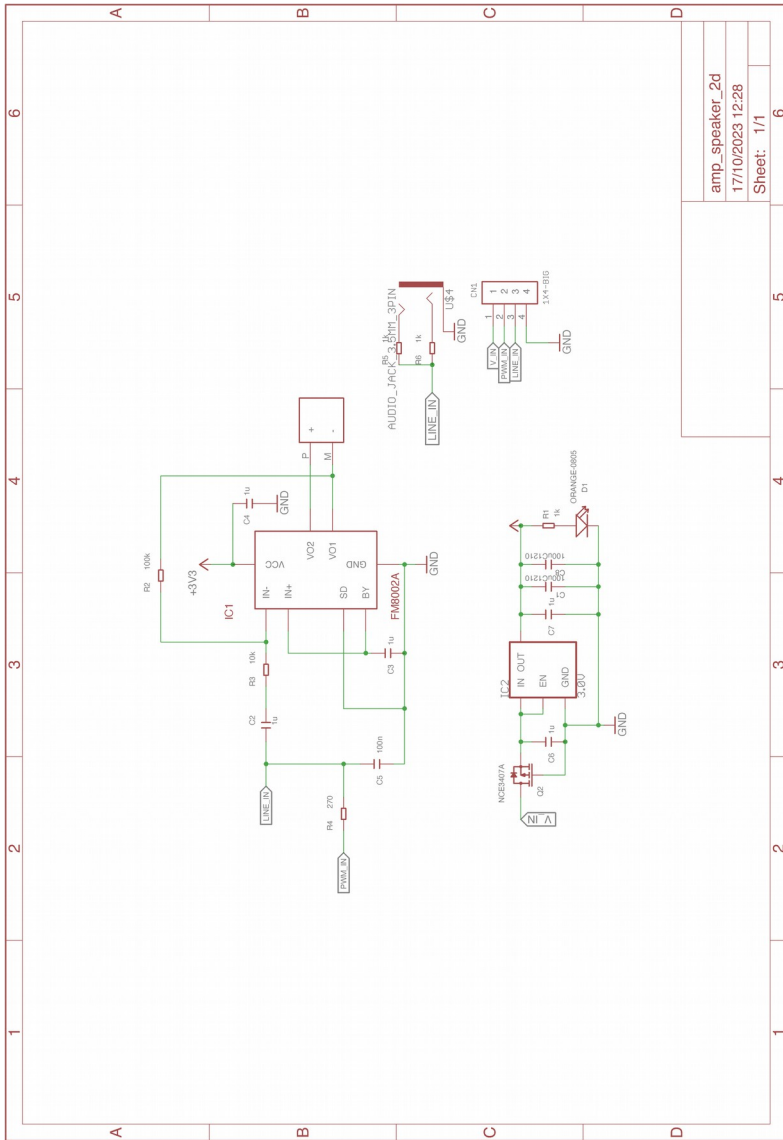
Overall Dimensions (incl. Speaker)

		Units
Width		mm
Height	60	mm
Thickness	7	mm

Electrical Characteristic

		Units
Supply voltage range	3.3 to 6	V
Speaker impedance	8	Ω
Speaker nominal max power	500	mW
LP filter f0	23.6	kHz
Maximum current consumption	300	mA

Schematic



amp_speaker_2d
17/10/2023 12:28
Sheet: 1/1

Board Dimensions

