

Datasheet:



ILLUMINATA

V1B - 2022-09-01

The MonkMakes Illuminata is designed to make it super-easy to use a high brightness bulb with a Raspberry Pi, Pico, Arduino, ESP32 or other microcontroller board.

- 3V to 6V operation.
- Built-in MOSFET for PWM and on/off control
- Pre-soldered pin headers (GND, Control and +V)
- Breadboard friendly
- M2.5 mounting holes



Absolute Maximum Ratings

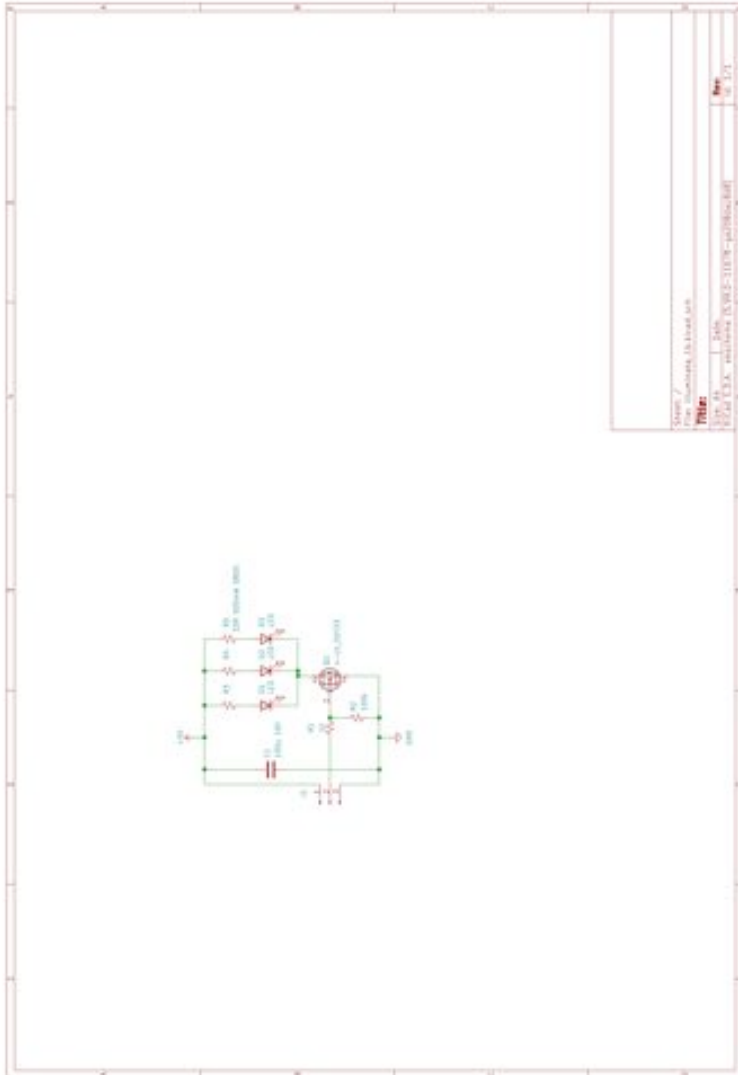
		Units
Supply voltage	6.2	V
MOSFET Reverse voltage	20	V
MOSFET Gate voltage	20	V

Electrical Characteristic (at 25 °C)

	Min	Typ	Max	
Current (OFF)			100	nA
Current (ON) at 6V	-	250	260	mA
Current (ON) at 5V	-	170	180	mA
Current (ON) at 3.3V	-	48	55	mA
On threshold voltage	-	1.5	1.7	V
PWM frequency	50	-	1M	Hz
Control current	-	-	50	µA
Color temperature		4000		K



SCHEMATIC



MECHANICAL

Mounting hole size M2.5.

