

User Manual ZBBridge-U(EN)



Zigbee Bridge

User Manual V1.0

Introduction

Zigbee Bridge Ultra is a Zigbee 3.0 gateway that enables wired or wireless connections. It supports smart security, voice control, and scene linkage with other devices. Additionally, it acts as a Matter bridge, allowing Zigbee devices to be converted into Matter devices, making it easy to integrate with different smart home products for home automation.



Push Notification



Matter Bridge



Ethernet/Wi-Fi
Connection



Smart Scene



Smart Home Security



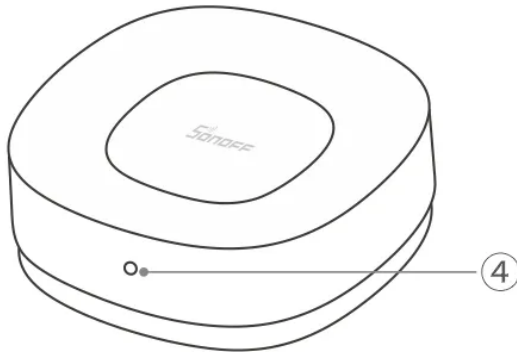
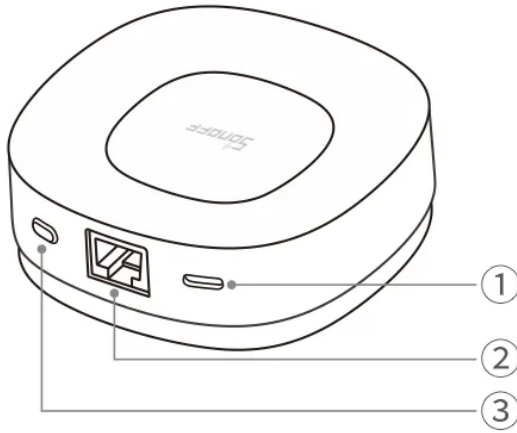
Manage Up to 256
Zigbee Devices



Voice Control



Sub-device OTA
Upgrade



① Power supply interface (Type-C)

② Network interface (RJ45)

③ Button

- Press and hold for 3 seconds: The device enters the pairing mode. (Pairing time 30 minutes)
- Press and hold for 10 seconds: Factory Reset
- Single press button: Exit pairing mode; Cancel alarm

④ LED indicator

- Blue-green flashes alternately: The device is starting up.
- Yellow slow flashing: The device is in eWeLink pairing mode.
- Solid green: eWeLink App pairing successful.
- Red rapid flashing: Fail to connect to the router.
- Red slow flashing: Network pairing failed.
- Green slow flashing: The device is in Matter network pairing mode.
- Red-green-blue flashes alternately: Factory Mode
- Blue slow flashing: Factory Reset

Specification

Model	ZBBridge-U
MCU	RV1109+EFR32MG21
Input	5V=1A
Wireless connection	Wi-Fi IEEE 802.11b/g/n 2.4GHz, Zigbee 3.0
Power supply interface type	Type-C
Network interface type	RJ45 (10/100Mbps)
Net weight	92.5g (Accessories not included)
Product dimension	82x82x28mm
Color	White
Casing materials	PC+ABS
Applicable place	Indoor
Working temperature	-10°C~40°C
Working humidity	5%~95% RH, non-condensing
Working height	Less than 5000m
Certification	CE/FCC/ISED/RoHS
Executive standard	EN 62368-1

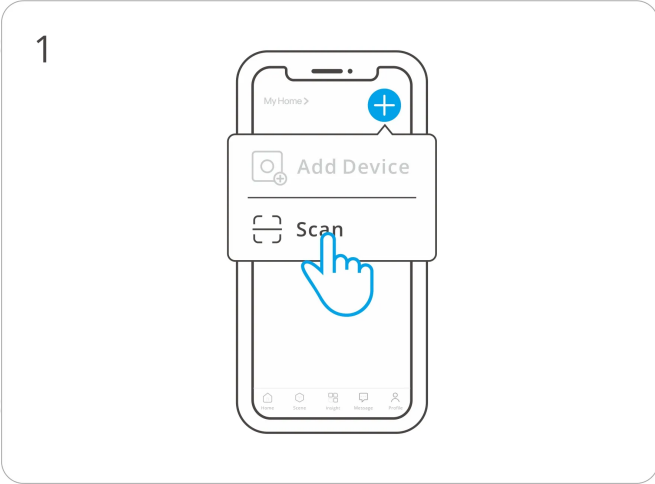
- This product should be powered by a direct current power supply that complies with the EN 62368-1 standard, with an output range of PS2 and ES1.

Add Device

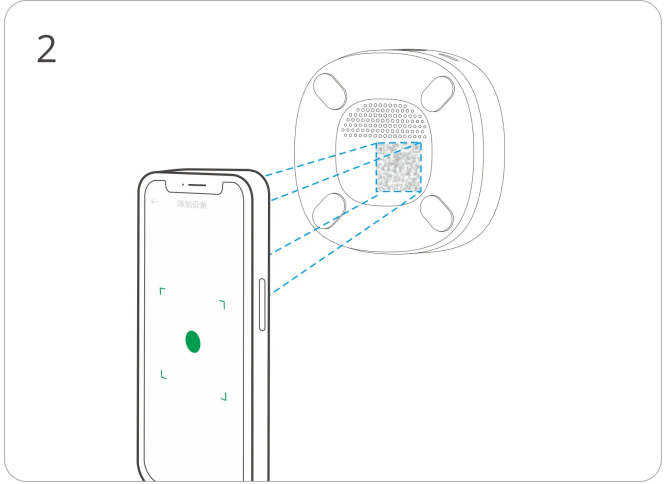
1. Download the eWeLink App

Please download the "eWeLink" App from [Google Play Store](#) or [Apple App Store](#).

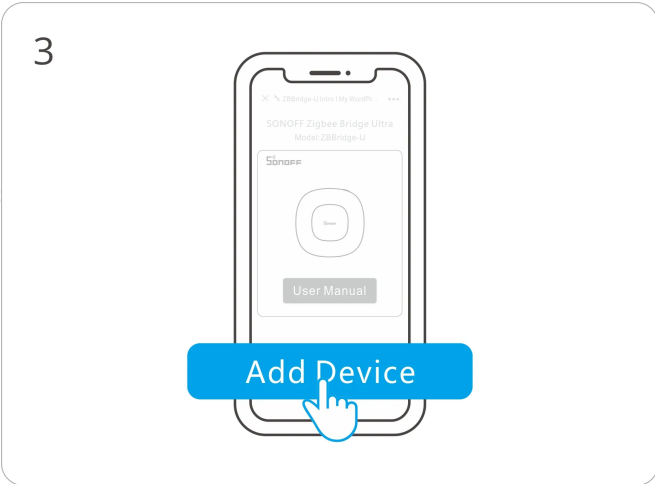
2. Scan QR Code to Add Device



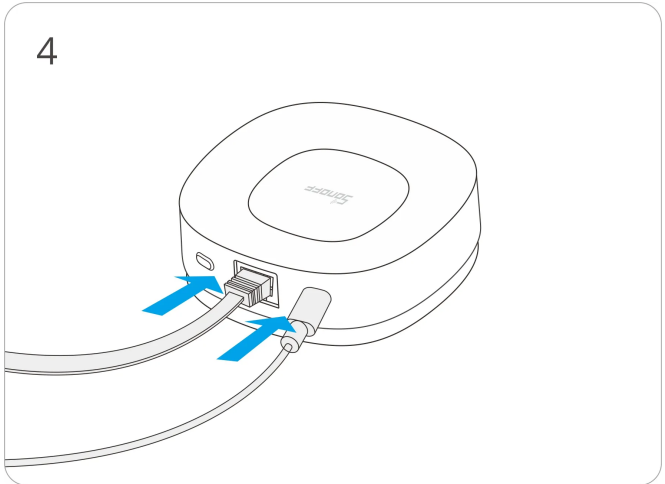
Enter "Scan".



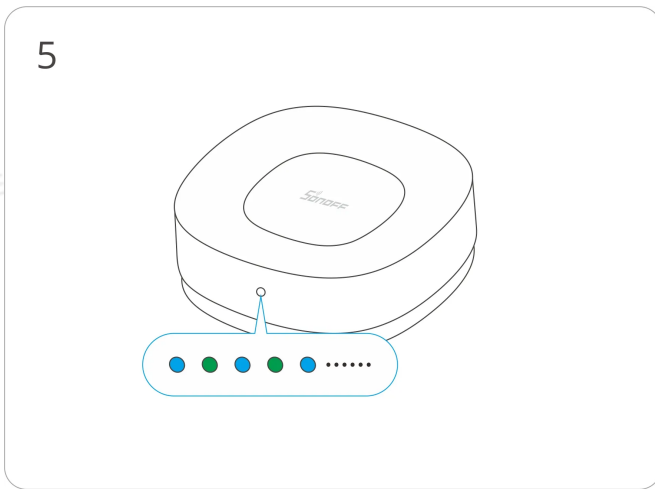
Scan the QR code on the device.



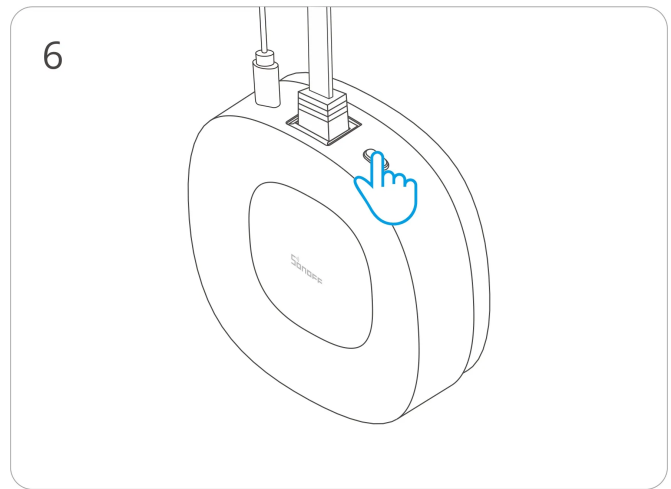
Select "Add Device".



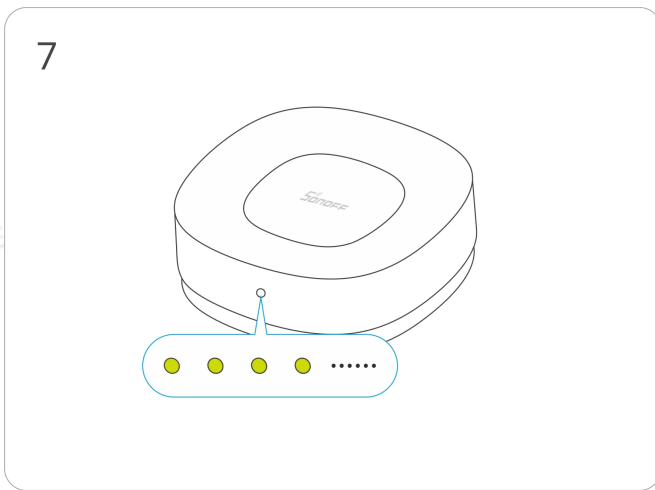
Power on (plug in the Type-C charger cable and network cable) .



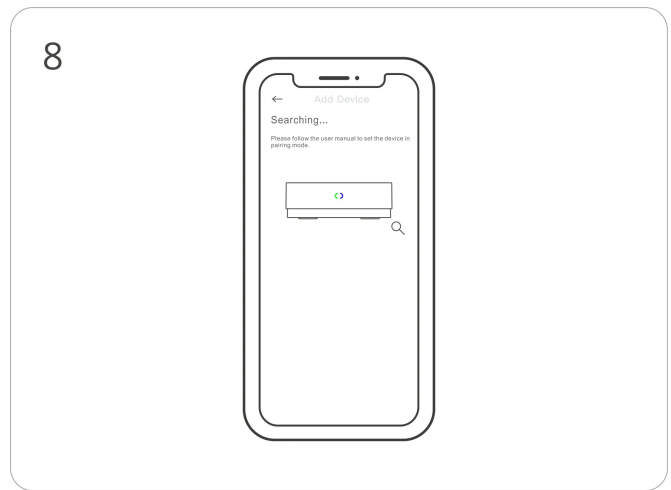
The device is starting up (Blue-green LED flashes alternately), and when you hear a beep, it means the startup is done.



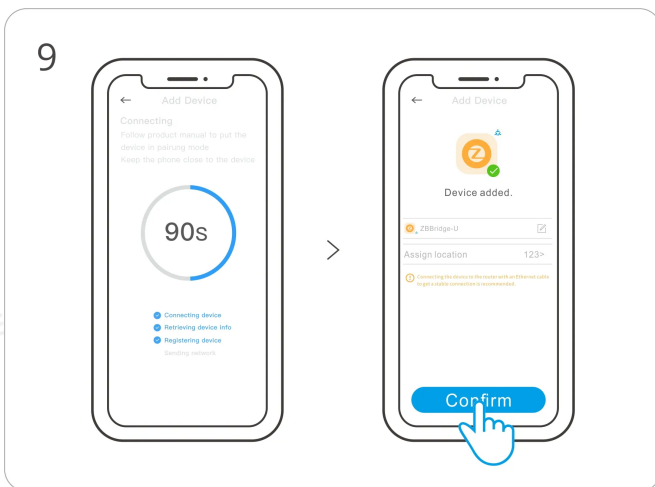
Long press the button for 3 seconds.



Check Wi-Fi LED indicator flashing status (Yellow flashing slowly)



Wait for the device to be found and connected.

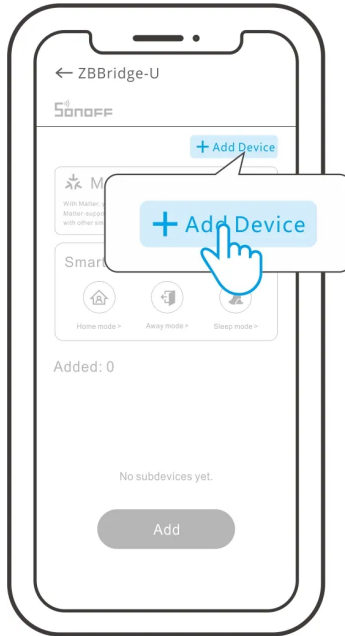


Device added completely

*When using a wired connection, ensure that your phone is connected to the same Wi-Fi network as the wired connection.

Add Zigbee Sub-devices

First, put the Zigbee sub-device into Pairing mode, then click on "+ Add Device" on the gateway interface, and wait for the search to complete to add the sub-device.

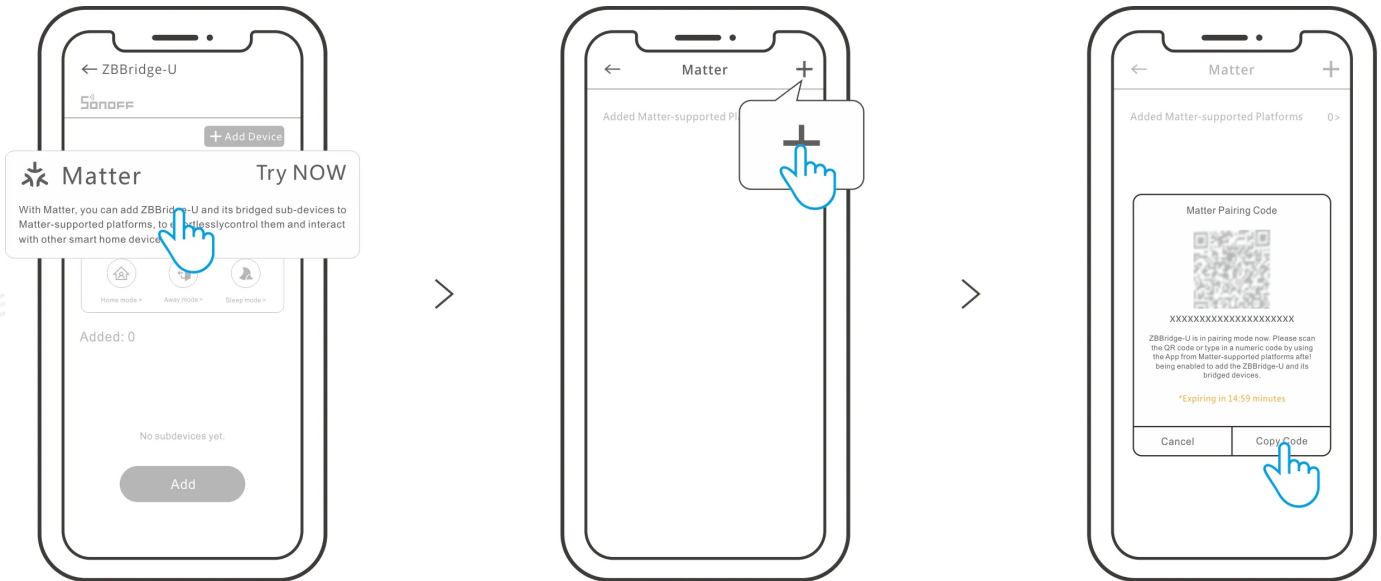


*ZBBridge-U only supports adding SONOFF and eWeLink ecosystem Zigbee sub-devices.

Sync to Matter Platform

*Please ensure that your Amazon Hub, Google Home Hub, Home Hub, SmartThings Hub, and other devices are compatible with Matter. When setting up this step, you need to connect ZBBridge-U, hub and mobile phone to the same network.

1. Open the eWeLink App, find Matter pairing information of the device, and copy the Matter Pairing Code.



2. Open the third-party matter-compatible App, find the entrance to add a Matter device, and paste the Pairing Code into it.



Add to Apple via Matter



Add to Google via Matter



Add to Alexa via Matter



Add to SmartThings via Matter

*This function only supports syncing SONOFF and eWeLink ecosystem Zigbee sub-devices to the matter platform.

FCC Compliance Statement

1. This device complies with part 15 of the FCC Rules. Operation is subject to the following two conditions:

- (1) This device may not cause harmful interference, and
- (2) This device must accept any interference received, including interference that may cause undesired operation.

2. Changes or modifications not expressly approved by the party responsible for compliance could void the user's authority to operate the equipment.

to

Note: This equipment has been tested and found to comply with the limits for a Class B digital device, pursuant to part 15 of the FCC Rules. These limits are designed to provide reasonable protection against harmful interference in a residential installation. This equipment generates, uses and can radiate radio frequency energy and, if not installed and used in accordance with the instructions, may cause harmful interference to radio communications. However, there is no guarantee that interference will not occur in a particular installation. If this equipment does cause harmful interference to radio or television reception, which can be determined by turning the equipment off and on, the user is encouraged to try to correct the interference by one or more of the following measures:

- Reorient or relocate the receiving antenna.
- Increase the separation between the equipment and receiver.
- Connect the equipment to an outlet on a circuit different from that to which the receiver is connected.
- Consult the dealer or an experienced radio/TV technician for help.

FCC Radiation Exposure Statement:

This equipment complies with FCC radiation exposure limits set forth for an uncontrolled environment.

This equipment should be installed and operated with minimum distance of 20 cm between the radiator and your body.

This transmitter must not be co-located or operating in conjunction with any other antenna or transmitter.

ISED Notice

This device contains licence-exempt transmitter(s)/receiver(s) that comply with Innovation, Science and Economic Development Canada's licence-exempt RSS(s). Operation is subject to the following two conditions:

- (1) This device may not cause interference.
- (2) This device must accept any interference, including interference that may cause undesired operation of the device.

This Class B digital apparatus complies with Canadian ICES-003(B).

This device complies with RSS-247 of Industry Canada. Operation is subject to the condition that this device does not cause harmful interference.

L'émetteur/récepteur exempt de licence contenu dans le présent appareil est conforme aux CNR d'Innovation, Sciences et Développement économique Canada applicables aux appareils radio exempts de licence. L'exploitation est autorisée aux deux conditions suivantes :

(1) L'appareil ne doit pas produire de brouillage;

(2) L'appareil doit accepter tout brouillage radioélectrique subi, même si le brouillage est susceptible d'en compromettre le fonctionnement.

Cet appareil numérique de la Classe B conforme à la norme NMB-003(B) du Canada.

Cet appareil est conforme à la norme RSS - 247 d'Industrie Canada. Le fonctionnement est soumis à la condition que cet appareil ne provoque pas d'interférences nuisibles.

ISED Radiation Exposure Statement

This equipment complies with ISED radiation exposure limits set forth for an uncontrolled environment.

This equipment should be installed and operated with minimum distance of 20 cm between the radiator and your body.

This transmitter must not be co-located or operating in conjunction with any other antenna or transmitter.

Cet équipement est conforme aux limites d'exposition aux rayonnements de la ISED établies pour un environnement non contrôlé.

Cet équipement doit être installé et fonctionner à au moins 20cm de distance d'un radiateur ou de votre corps.

Cet émetteur ne doit pas être co-localisé ou fonctionner en conjonction avec une autre antenne ou un autre émetteur.

SAR Warning

Under normal use of condition, this equipment should be kept a separation distance of at least 20 cm between the antenna and the body of the user.

Dans des conditions normales d'utilisation, cet équipement doit être maintenu à une distance d'au moins 20 cm entre l'antenne et le corps de l'utilisateur.

EU Declaration of Conformity

Hereby, Shenzhen Sonoff Technologies Co., Ltd. declares that the radio equipment type ZBBridge-U is in compliance with Directive 2014/53/EU. The full text of the EU declaration of conformity is available at the following internet address: <https://sonoff.tech/compliance/>

For CE Frequency

EU Operating Frequency Range:

Wi-Fi: 802.11 b/g/n20 2412–2472 MHz, 802.11 n40: 2422–2462 MHz

BLE: 2402–2480 MHz

Zigbee: 2405–2480 MHz

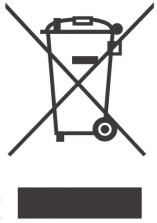
EU Output Power:

Wi-Fi 2.4G ≤ 20dBm

BLE ≤ 10dBm

Zigbee ≤ 10dBm

WEEE Disposal and Recycling Information



WEEE Disposal and Recycling Information All products bearing this symbol are waste electrical and electronic equipment (WEEE as in directive 2012/19/EU) which should not be mixed with unsorted household waste. Instead, you should protect human health and the environment by handing over your waste equipment to a designated collection point for the recycling of waste electrical and electronic equipment, appointed by the government or local authorities. Correct disposal and recycling will help prevent potential negative consequences to the environment and human health. Please contact the installer or local authorities for more information about the location as well as terms and conditions of such collection points.

Scatola	Neto	Scatola	Manuale	Borsa
PAP 20	PAP 20	PAP 21	PAP 22	CPE 7
Carta	Carta	Carta	Carta	Plastica
RACCOLTA DIFFERENZIATA				
Verifica le disposizioni del tuo Comune.				
Separa le componenti e conferiscile in modo corretto.				

SONOFF

Manufacturer: Shenzhen Sonoff Technologies Co., Ltd.

Address: 3F & 6F, Bldg A, No. 663, Bulong Rd, Shenzhen, Guangdong, China

ZIP code: 518000

Service email: support@itead.cc

Website: sonoff.tech

Made in China



FR

Cet appareil et ses accessoires se recyclent

À DÉPOSER EN MAGASIN



OU

À DÉPOSER EN DÉCHÈTERIE



Points de collecte sur www.quefairedemesdechets.fr
Privilégiez la réparation ou le don de votre appareil !

