

CYBERSTARS

Brand-New Mobile Intelligent Entity

New Technology Pet Quadruped Robot

Cyber 1



Intelligent LED Light Strips

Dynamically convey your mood state
More interesting interactio

Voice Interaction ^[2]

All-scenario communication
is more efficient

Ultrasonic radar

The front and rear are equipped with
standard radars
The maximum effective distance for
ranging is 4.5 meters
Precise perception and autonomous
obstacle stopping

Speaker

Listen freely without
boundaries
Enhance the dynamic
audio experience

Powerful computing power

Technology equality
High-performance ARM processor
High-efficiency motion controller

Colorful color matching

4 color options are available meet
the needs of different scenarios

Champagne gold

Tech grey

Vibrant orange

Space White

The hardware is more stable and reliable

Equipped with a 4G module
2.4G WiFi
Bluetooth BT2.1+EDR/BT
3.0/BT4.2/BLE4.2

Paired with a two-hand
remote control, the
stability performance
has been significantly
enhanced, and it also
supports remote control,
providing a more
streamlined user
experience

Front camera

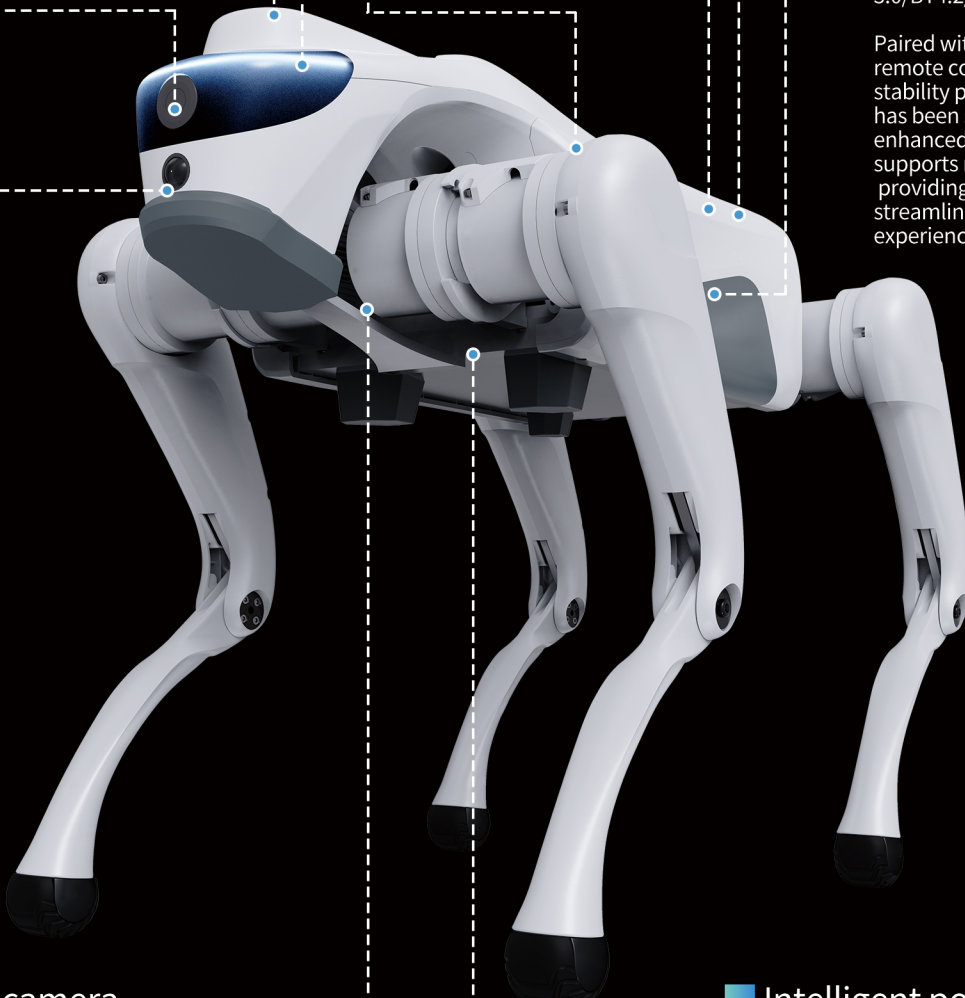
Ultra-wide-angle shooting
is clearer
The video transmission
resolution reaches 1920*1080

High-performance ^[1] joint motor

Maximum torque: 45N.m
Strong performance and
powerful performance

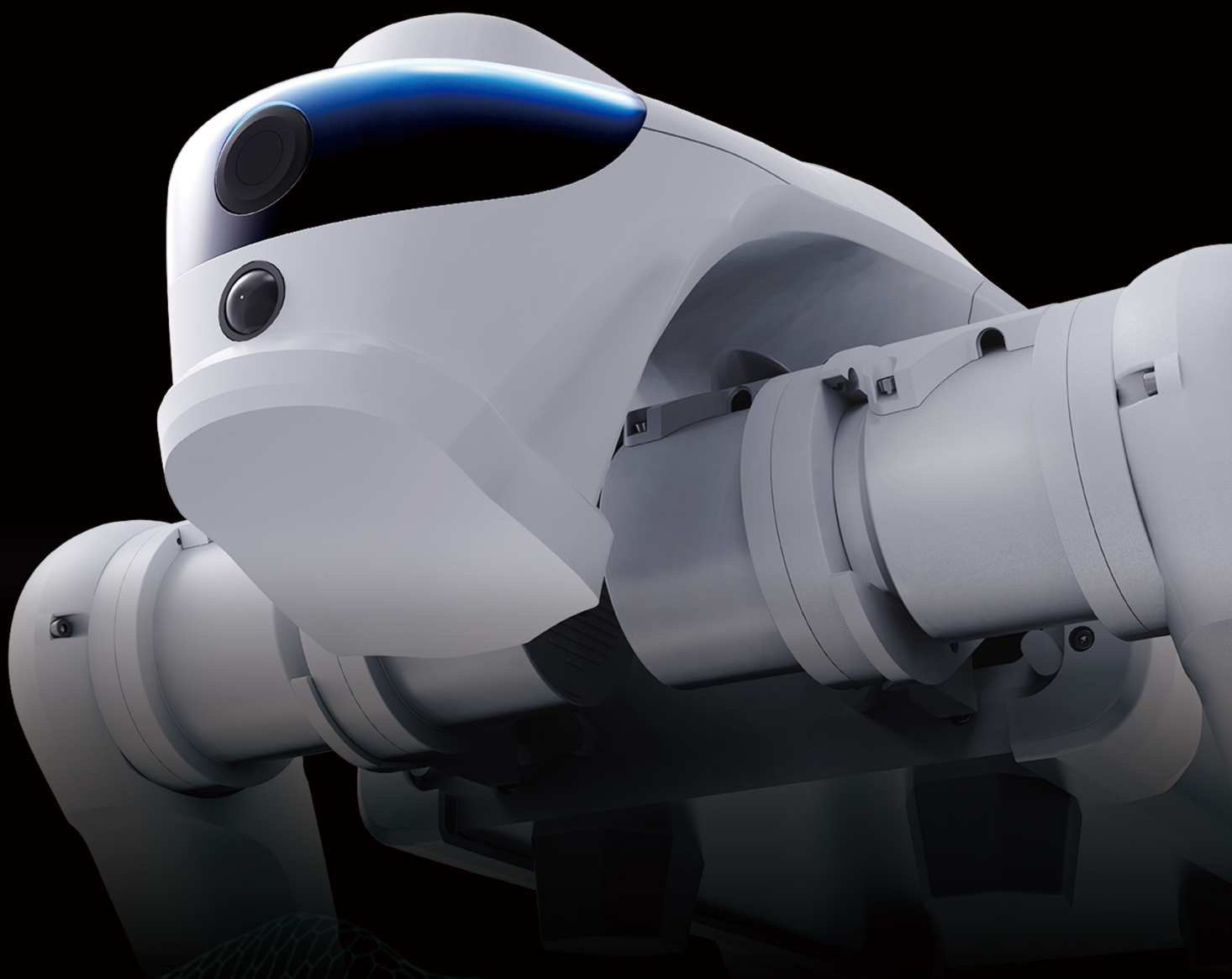
Intelligent power battery

The Pro version is equipped with a
9600mAh battery (Voltage 28.8V/
Energy 276.48Wh) equipped with an
automotive-grade BMS power
management system



Ultra-clear wide-angle camera The visual capture capability has been comprehensively upgraded

With its wide field of view coverage and high-resolution imaging performance, it can clearly capture scene details. Whether it is the fine object features at close range or the environmental contours at medium and long distances, it can accurately restore the picture information.



1920 × 1080

Image transmission resolution

**Effective distance is
less than 4.5 meters**

Front and rear ranging radar scanning

LED light strip

Display different states

The OTA of various action postures is continuously being upgraded

Cyber1 can flexibly perform a variety of action postures such as jumping, handstands, stretching, shaking hands, spinning in place, heart gestures, and sitting down. Whether in daily interactions or scene-based presentations, it can display dynamic postures, enhancing the fun of human-computer interaction. More actions are waiting for you to discover. ※The actions are still under development and learning, and will be upgraded later via OTA updates.



Jump



Shake hands



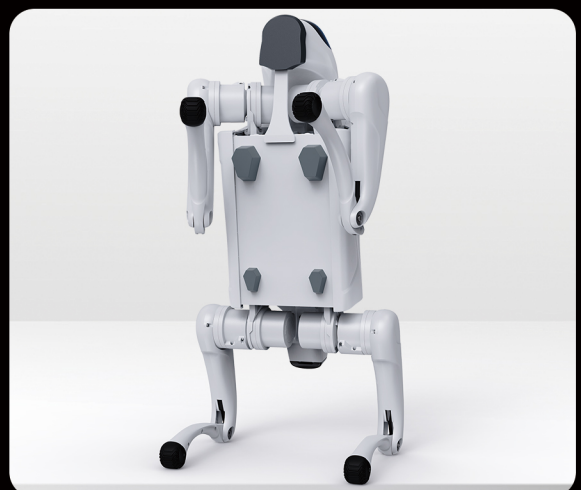
Do handstands



Dance



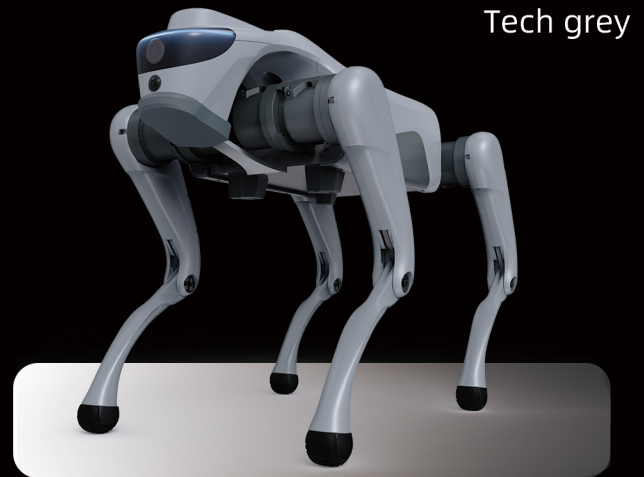
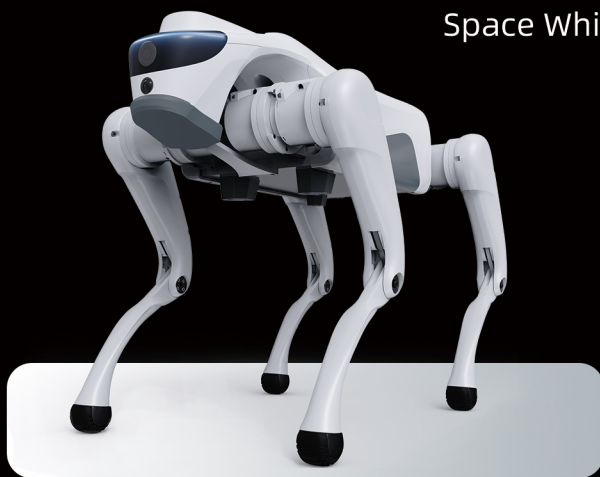
Greet



Make heart signs

The dynamic colors transform into new life

The body shell is meticulously crafted in 4 personalized color options, ranging from the simple and elegant basic tones to the vibrant and eye-catching trendy color series. Each one combines texture and design sense. Whether it's a warm and cozy fit for home Settings or an eye-catching presentation in outdoor Settings, you can always find color options that match your style, easily meeting the aesthetic and usage needs in different scenarios.



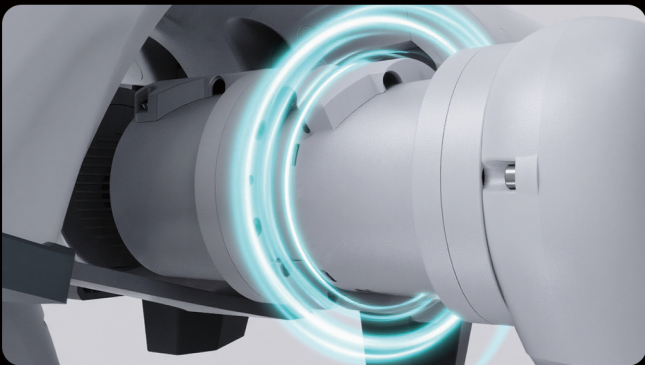
Hardcore Performance, Power Unleashed

Self-Developed Hardware Platform, Faster and More Stable Performance



Camera & radar dual excellent perception capabilities

The front camera has a 1920*1080 resolution ratio, combined with a 120° Ultra-wide-angle design, making the captured images clearer and providing high-quality image support for visual perception. The front and rear ultrasonic radars have a maximum effective distance of 4.5 meters which can accurately capture information about the surrounding environment, helping to achieve automatic obstacle avoidance and ensuring mobile safety.



Joint performance has made a strong leap

The peak torque of the joints of the Cyber1 quadruped robot has been significantly enhanced, reaching up to 45 N.m; The joint degrees of freedom perform exceptionally well. With the 12 degrees of freedom of the entire machine, the flexibility has been significantly enhanced, making it suitable for various motion requirements in different scenarios.

※The value here represents the maximum torque of the joint motor.



Powerful Drive, Massive Output

Cyber 1 quadruped robot is equipped with a 9600mAh battery (28.8V / 276.48Wh). It features an automotive-grade BMS power management system, enhancing motor efficiency and operational stability.



Visible remote control (optional)

A lightweight and easy-to-use remote control with a screen, high-definition video transmission. Once turned on, it can be used directly without connecting to a mobile phone. More focused, more enjoyable.

Display: 4.7-inch 750×1334 touch screen

Battery: 5000mAh

Dimensions: 184.8mm × 82.6mm × 15.8mm

Weight: 261g

※Coming soon

Parameter

Model	Cyber1 Pro	Cyber1 Dev	Cyber1 Edu	
Mechanical parameter	Standing dimensions	67x36x43cm		
	Weight (including battery)	15.4kg(±0.5kg)		
	Material Information	Aluminum alloy + high-strength engineering plastic		
	Supply voltage	28V-33.6V		
	Maximum working power	3000W		
Performance parameters	loading	8kg		
	Maximum speed	3m/s		
	Maximum climbing drop height	15cm		
	The maximum climbing slope angle	40°		
	Computing capability	8-core high-performance CPU, 6 Tops		
	Maximum joint torque ^[1]	~45N.m		
	Joint motion space	Hip-30°~30°, Thigh-25°~204°, lower leg-114°~17°		
Functions and accessories	Ultra-clear wide-angle camera	●		
	Ultrasonic radar	●		
	BluetoothBT2.1+EDR/ BT3.0/BT4.2/BLE4.2	●		
	WIFI 2.4G	●		
	4G module	●		
	OTA updating	●		
	Phonetic function	●		
	Dialogic function ^[2]	○		
	Two-handed remote control	●		
	Visual remote control	Optional		
	Smart battery	9600mAh (28.8V/276.48Wh)		
	Charger	33.6V, 5A		
	2nd development function	○	●	○
	EDU research function	○	○	●
	SDK	○	●	○
	Reinforcement learning training	○	○	●
	Mobile App	●	●	●
Match colors	Champagne gold	Vibrant Orange	Space white	Tech gray

Note: ● indicates the presence of this configuration; ○ indicates the absence of this configuration. "coming soon" indicates that this function is under development and will be upgraded via OTA update in the future.

※ Note: The above parameters may vary in different business scenarios and for different model configurations. Please refer to the actual situation for details. The appearance of the product may undergo slight adjustments in the future. Please refer to the actual product for the final details.

※This product is a civilian robot. Please, all users, do not attempt any dangerous modifications or use the robot.

※For detailed functions, please refer to the product manual or development manual

[1]The value here represents the maximum torque of the joint motor.

[2]The dialogue function specifically refers to voice interaction and communication, voice broadcasting, and music playback.

Disclaimer

1. Our company reserves the right to modify and interpret the promotional content.
2. Product images and information are for reference only. Please refer to the actual items and the latest policies.
3. Any decisions made by the user based on this information are at their own risk.