

DORY EXPLORE

Quick Start Guide

1. Scan the QR code to view the tutorial video.

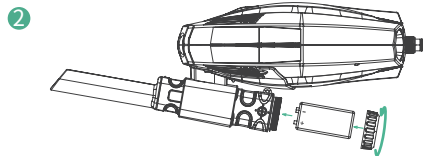


www.chasing.com

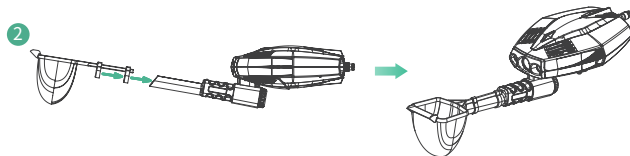
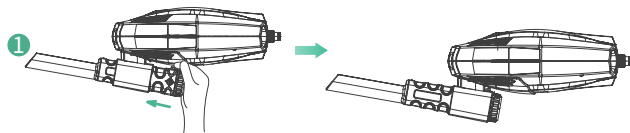
2. Scan the QR code to install the CHASING GO2 APP.



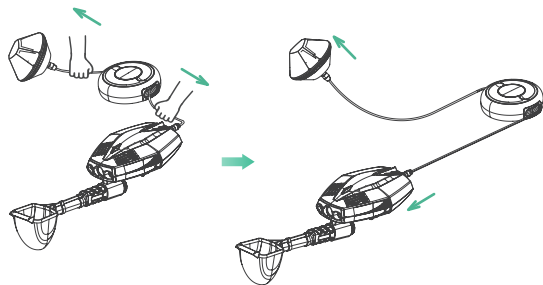
3. Remove the battery film, install it in the metal detector, and check the polarity.



4. Install the metal detector and small net on the DORY EXPLORE.



5. Connect the buoy to the DORY EXPLORE, and release all the cable. The indicator light will flash green continuously.



6. Access your phone's Wi-Fi settings and connect to the Wi-Fi with the name "Dory xxxxx" (Wi-Fi password: 12345678).



7. Connect the Bluetooth controller.



8. Long press to turn on the metal detector **①**, throw the DORY EXPLORE with metal detector into the water **②**, unlock the motor, and start the underwater treasure hunt **③**.

