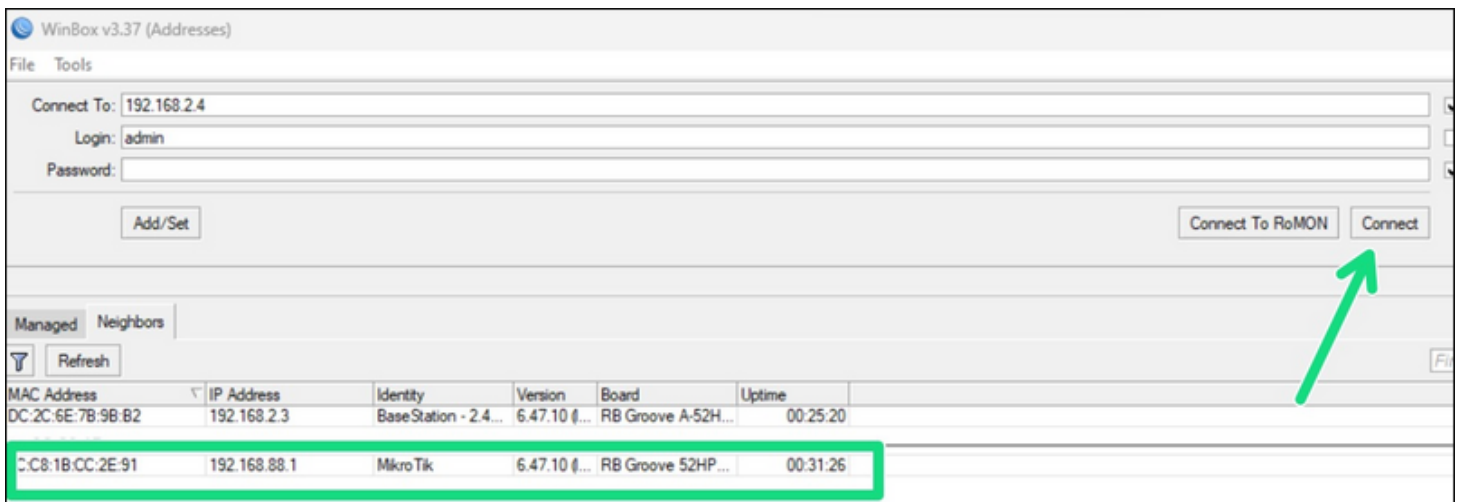


Mikrotik Programming

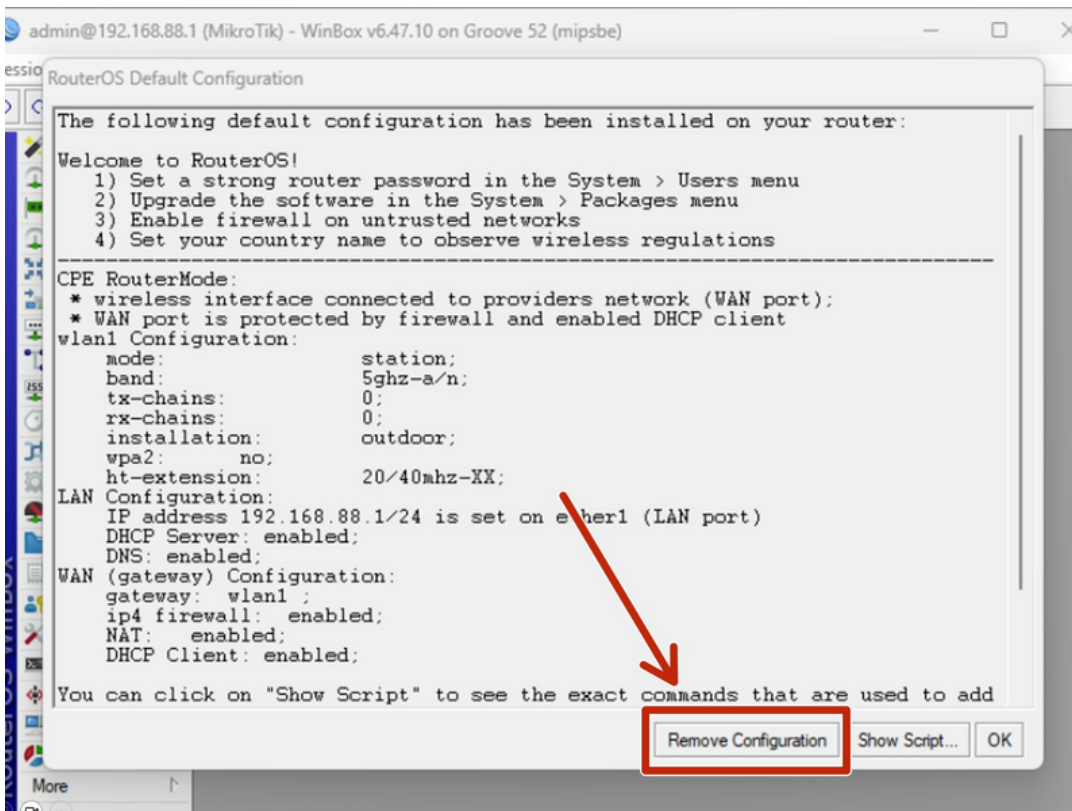
The steps for programming the router inside the BlueBoat and the BaseStation are similar but they use different configuration files and terminal commands. Please follow the instructions carefully.

Programming the routers requires the **Winbox** program. Download it here: <https://mikrotik.com/download>

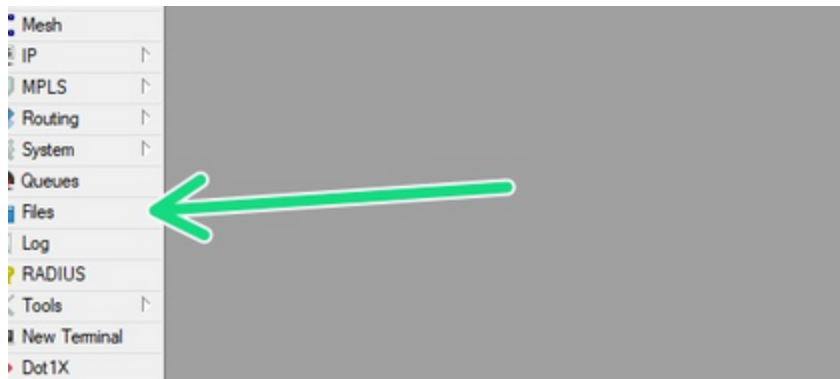
1. Ensure the antenna is connected to the router. Connect the router to computer and power it up (9-12V DC).
2. Open Winbox program. Select the router from the list and click **connect**.



3. Click **Remove Configuration** from the pop-up.



4. Navigate to **Files**.

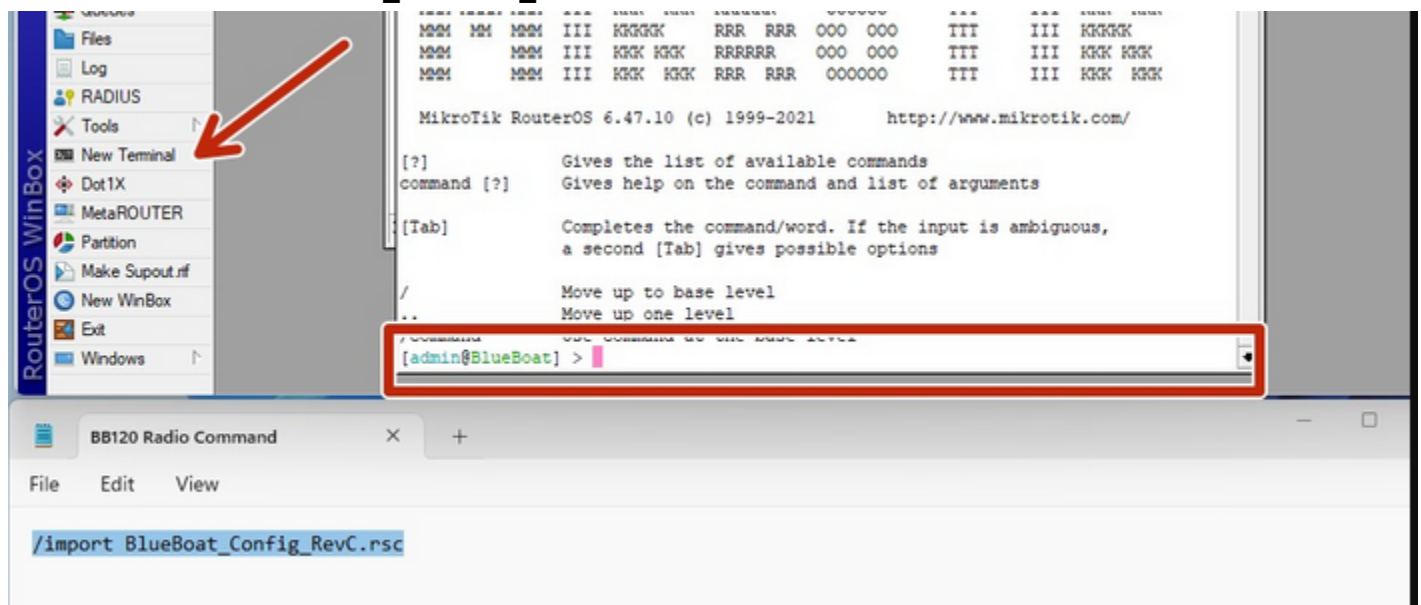


5. Drag and drop the configuration (.rsc) file into the file list.

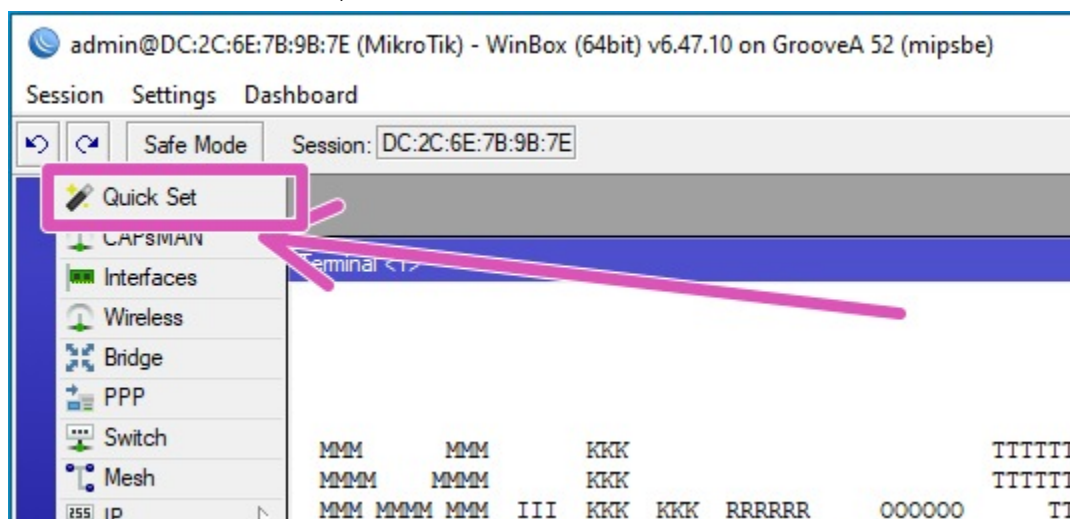
- Use the **BaseStation_Config_RevC.rsc** file to program the BaseStation router.
- Use the **BlueBoat_Config_RevC.rsc** file to program the BlueBoat router.

6. Navigate to **New Terminal**. Copy and paste the text from the Terminal Command file into Terminal window and press **Enter**.

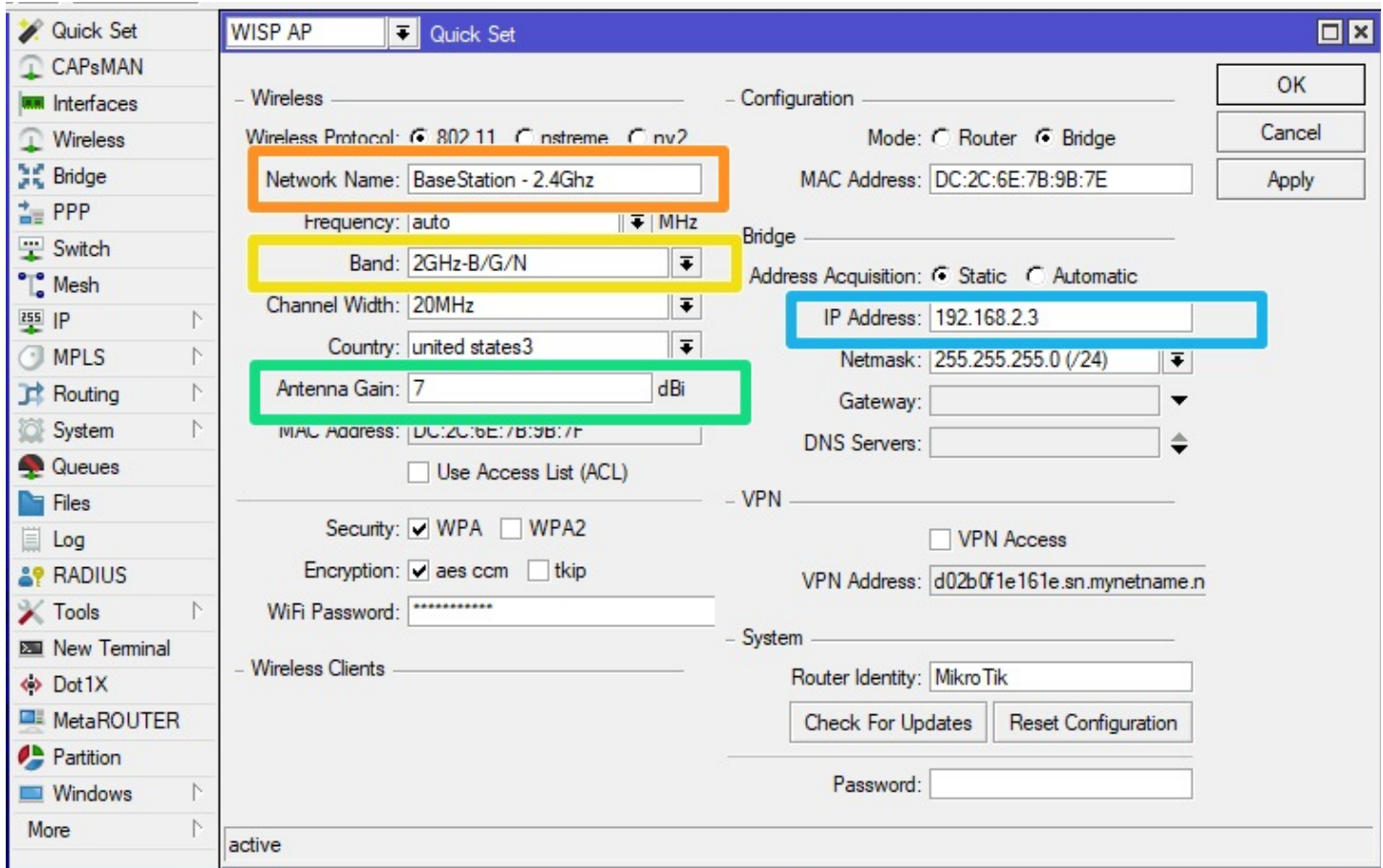
- Use the file **BaseStation_Terminal_Command.txt** for the BaseStation router.
- Use the file **BlueBoat_Terminal_Command.txt** for the BlueBoat router.



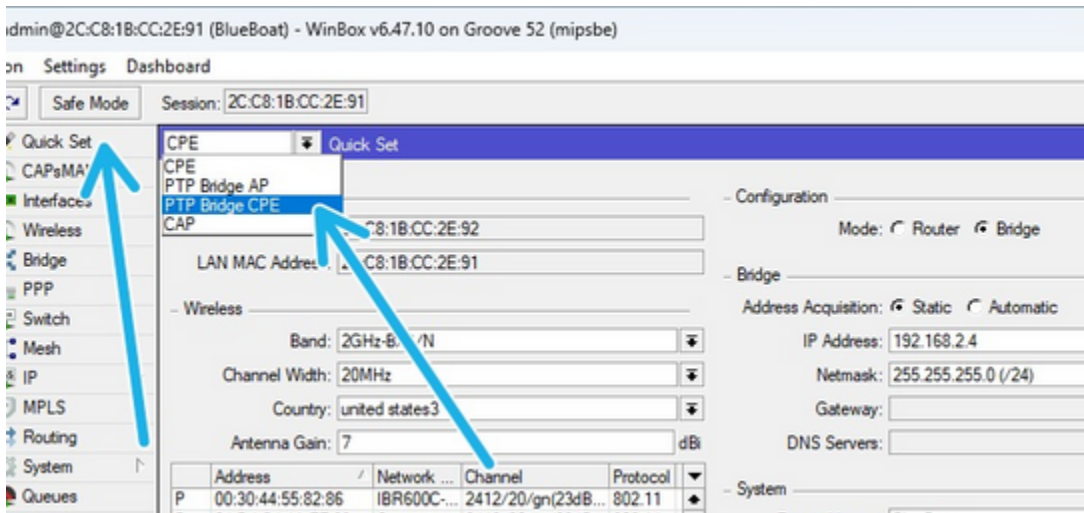
7. After the router reboots, click on the **Quick Set** menu.



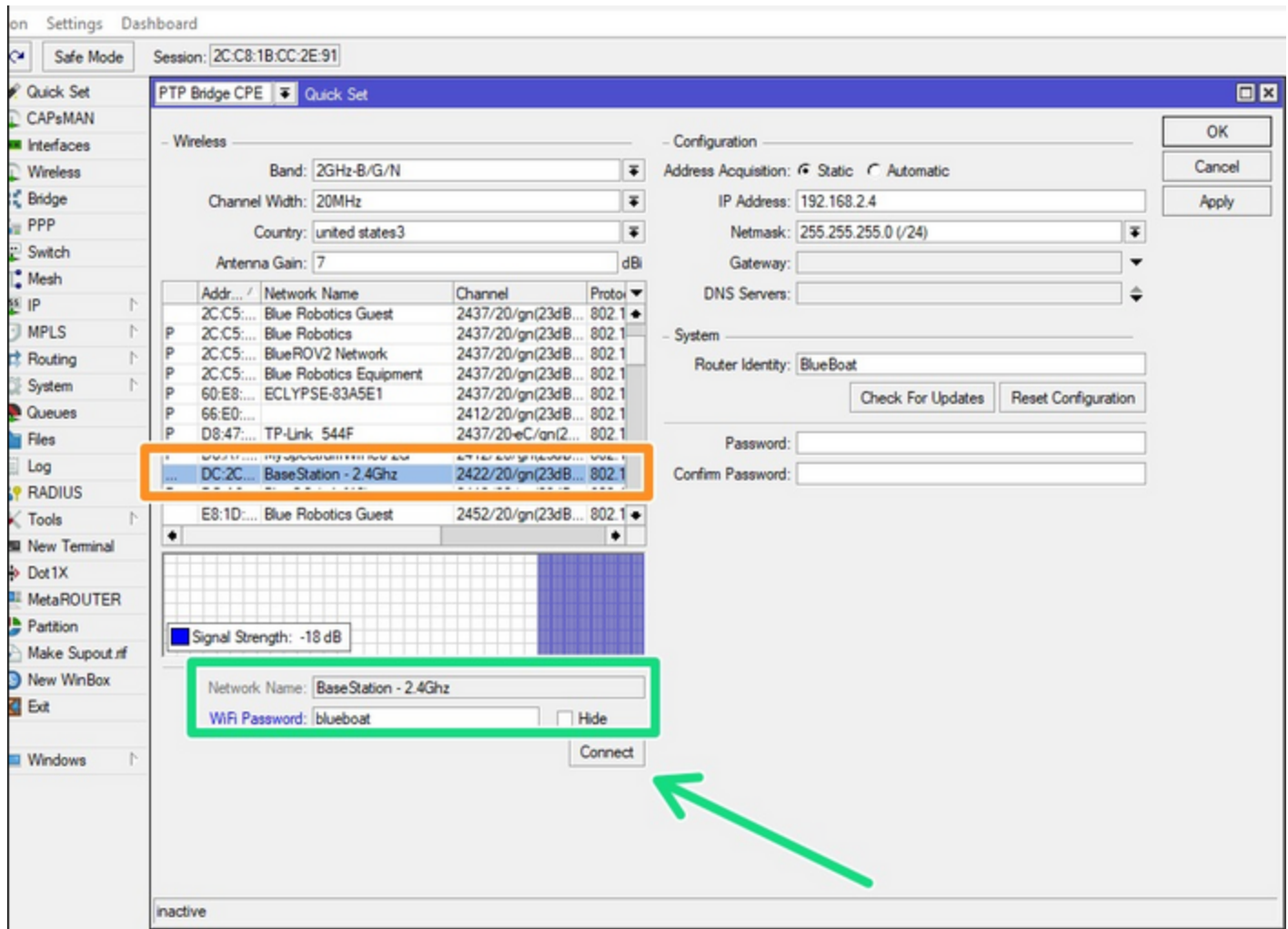
8. For BaseStation only: Check that the following settings are configured:



9. For BlueBoat Only: select **PTP Bridge CPE** from the dropdown menu.



Find the *BaseStation - 2.4GHz* network in the list (BaseStation must be active). Enter the password *blueboat* and press **Connect**.



Verify that the status says **connected to ess**.

